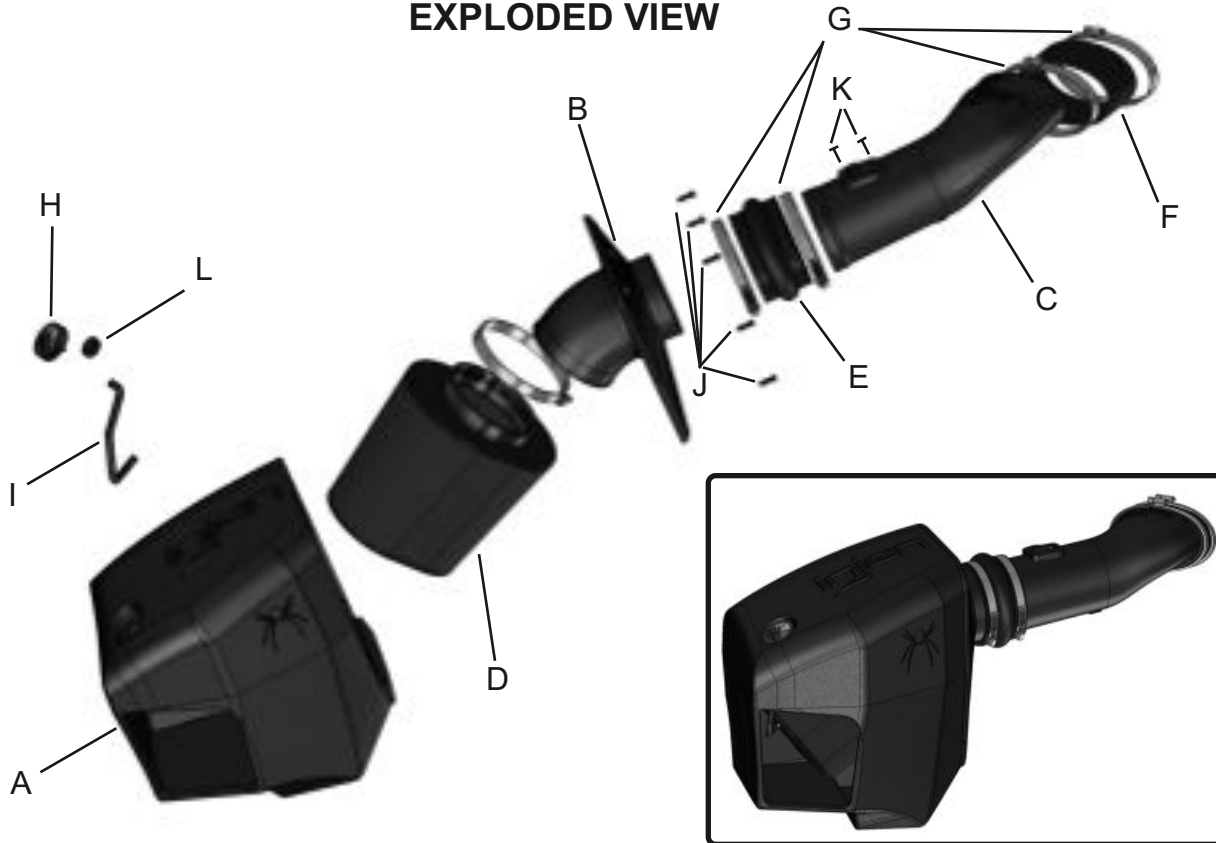




Vehicle Application:
 Make: Ford
 Model: F-250 / F-350
 Year: 2011-2015
 Engine: 6.7L (TD) Powerstroke

EXPLODED VIEW



Item	Qty	P/N	Discription
A	1	#15037	Ford Rotomold box
B	1	#15038	Ford Rotomold Plenum
C	1	#15039	Ford Rotomold Tube
D	1	#1060	5.00" Filter
E	1	#3200	4.50" Hump hose
F	1	#3131	4.50" straight hose 1-ply
G	4	#4014	#72 clamps
H	1	#15040	Filter minder
I	1	#3198	3mm-9" vacuum hose
J	5	#6076	M8 x 12mm bolts
K	2	#6047	M4 x 10mm bolts
L	1	#8026	Grommet

TOOLS REQUIRED

- 10mm Ratchet & Socket
- 8mm nut drive
- Allen key
- Flat Blade Screwdriver
- Phillips Screwdriver
- Pliers

WARNING: FAILURE TO FOLLOW INSTALLATION INSTRUCTIONS AND NOT USING THE PROVIDED HARDWARE MAY DAMAGE THE INTAKE SYSTEM, ENGINE AND COMPONENTS!!!
 *Do not attempt to install the intake system while the engine is hot.
 Severe burn could result from touching hot engine components!

Report any defective or missing parts to the authorized Injen dealer you purchased this product from. Before installing any parts of this system, please read the instructions thoroughly. If you have any questions regarding installation, please contact your Injen Technology dealer. Installation DOES require some mechanical skills. A qualified mechanic is always recommended.

A Limited Lifetime Warranty to the original purchaser against defects in material and workmanship on all Injen intake systems excluding the filter element. Any and all warranty coverage is limited to the repair or replacement of the defective part only, at Injen Technology's discretion. The warranty does not cover incidental or consequential damages, nor does it cover the cost of installation or removal of the defective part or its replacement. Proof of purchase is required.

Instruction Manual P/N:EVO9003

NOTE: This intake kit may not work on vehicles with the following aftermarket modifications.

- Aftermarket Intercooler piping
- Aftermarket intercooler
- Turbo upgrade
- Modified body panels
- Suspension & Chassis modifications

Injen intake systems are street legal in most states unless the state is adopting to California Emissions standards. States that have adopted California emission standards include: Arizona, California, Connecticut, District of Columbia, Maine, Maryland, Massachusetts, New Jersey, New Mexico, New York, Oregon, Pennsylvania, Rhode Island, Vermont, and Washington. These states will require an California Air Resource Board Executive Order Number (CARB E.O.) for the legal use of an Injen intake system in your vehicle for use on public roads or highways. These vehicle will be considered "Legal in California only for racing vehicles competition use only, which may never be used upon a public street or highway. **Please keep your factory air box assembly for any future use.**



The SuperNano-Web filter media is a dry synthetic media that outperforms the competition. The media itself is a proprietary base blend of synthetics and cellulose. Cellulose fibers are larger than synthetic fibers, and have larger spaces between the fibers, causing contaminants to load in the depth of the media and plug the airflow path. This creates higher restriction levels and less capacity. The synthetic fibers in the SuperNano-Web media are submicron in diameter and have small interior fiber spaces, which result in more contaminants being captured on the surface of the media. This can help keep restriction levels low as the filter loads with dirt and containments



If you look at the picture to the left, you can see the Nano-fiber web on top of our base media. That web, or SuperNano-Web as we like to call it, helps trap smaller particles and protect your engine.

To Clean your filter:

Carefully remove the filter from the housing. Once removed, wipe down the housing using a clean shop towel, being careful not to knock any dirt and/or debris in the air inlet. Your filters can be cleaned by carefully vacuuming the filter media from the dirty side, or by holding the filter with one hand and carefully blowing the filter media at a 45-degree angle from the clean side using low-pressure shop air (15-20 lbs. psi).

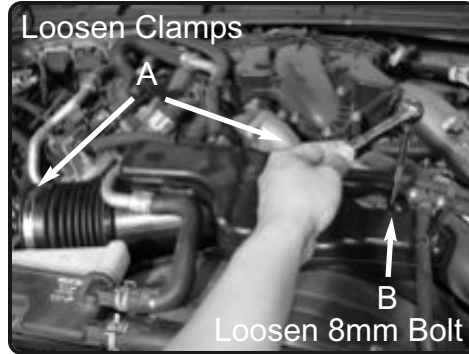
****IT IS IMPORTANT TO NOT USE ANY CLEANERS ON THE SUPERNANO-WEB MEDIA OR APPLY ANY OIL!!!***

NOTE: DISCONNECT BATTERY BEFORE INSTALLATION!!!

Instruction Manual P/N:EVO9003



1. Stock intake system shown.



2. (A) Loosen the two clamps from the air box and turbo inlet. (B) Loosen 8mm bolt.



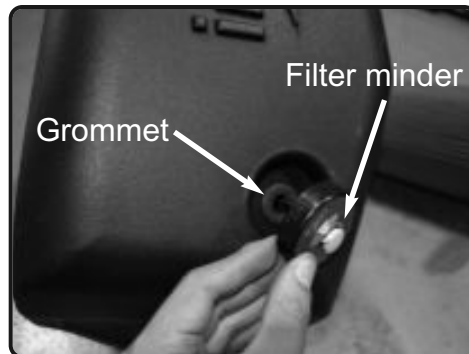
3. Disconnect the MAF sensor harness from the MAF sensor on the air box assembly.



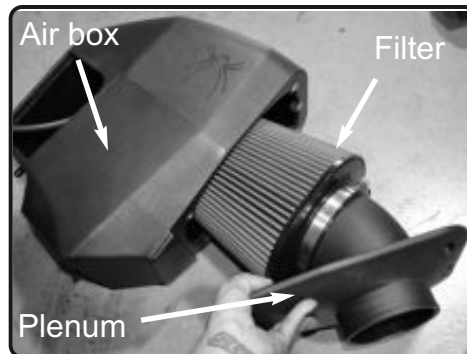
4. Lift the entire air box assembly out. Once air box is out. Remove the air duct from figure 3



5. The plastic vent panel behind the passenger side headlight will have to be removed.



6. Insert the grommet into the 7/8" hole inside the recessed hole. Then push the Filterminder into the grommet.



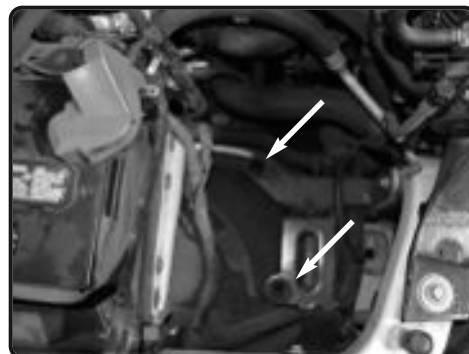
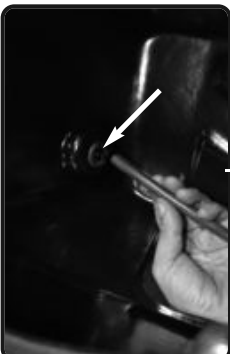
7. Place the filter onto the plenum and secure clamp. Insert the filter and plenum into the Injen air box



8. Place the five M8X12 bolts into the plenum and secure the plenum to the Injen airbox using an allen key.



9. Connect the 3mm vacuum hose to the 1/8" fitting on the filter. Then connect the other end to the filterminder from figure 6.



10. Locate the two stock airbox mounting grommets. The Injen airbox will also use these two grommets to mount up.



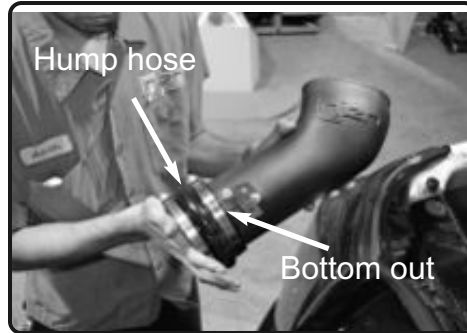
11. Drop the complete Injen airbox onto the mounting grommets from figure 10.



12. Place the 4.50" straight hose and two #72 clamps onto the turbo inlet. Only secure the clamp on the turbo inlet for now.



13. Remove the MAF sensor from the factory airbox assembly and put the MAF sensor into the new Injen intake tube. Use two M4 bolt and secure the MAF sensor to the Injen tube with an allen key



14. Place the 4.50" hump hose and two #72 clamps onto the round end of the Injen intake tube. Make sure you push the hump hose all the way down to the MAF sensor



15. Push the oval end into the turbo inlet.



16. Connect the other end of the tube to the Injen air box plenum and push the 4.50" hump hose over. Adjust the intake system for best fitment and secure clamps.



17. Re-connect the MAF sensor harness to the MAF sensor.



Congratulations! You have just completed the installation of this intake system. Periodically, check the alignment of the intake, normal wear and tear can cause nuts and bolts to come loose. **Note: Check clearance and adjust if needed! Failure to check the alignment and adjust the intake can cause damage that will void the warranty. Injen Technology is not responsible for any damages caused by/from improper installation.**

Test Drive:

1. With the transmission in neutral or park and the parking brake engaged, start the engine. Listen for air leaks or odd noises. If air leaks are detected, secure hoses and connections. For any odd noises, inspect entire system for cause and adjust intake as needed. The Injen intake will function identically to the factory system but will be louder and more powerful.
2. Perform a road test. Listen for odd noises or rattles and fix as necessary.
3. If there are no issues, continue to enjoy your added performance from the Injen performance Intake kit.
4. Injen Technology recommends you periodically check clearance and adjust if needed! Failure to check the alignment and adjust the intake can cause damage that will void the warranty. Injen Technology is not responsible for any damages caused by/from improper installation.

1. Upon completion of the installation, reconnect the negative battery terminal before you start the engine.
 2. Align the entire intake system for the best possible fit. Once the intake has been properly fitted continue to tighten all nuts, bolts and clamps.
 3. Periodically, recheck the alignment of the intake system and make sure there is proper clearance around and along the length of the intake. Failure to follow proper maintenance procedures may cause damage to the intake and will void the warranty.
 4. Start the engine and listen carefully for any odd noises, rattles and/or air leaks prior to taking it for a test drive. If any problems arise go back and check the vacuum lines, hoses and clamps that maybe causing leaks or rattles and correct the problem.
 5. Check the filter for excessive dirt build up.
- Enjoy the added power and performance of your new intake system.