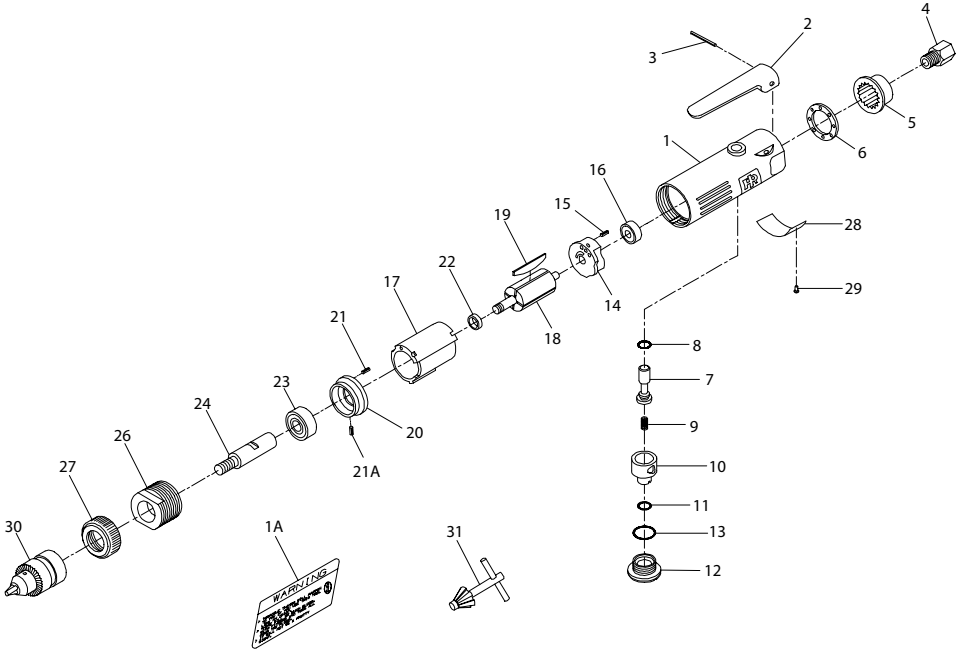


327 Tire Buffer - Exploded View



(Dwg. TPB822-3)

327 Tire Buffer - Parts List

| Item | Part Description | Part Number | Item | Part Description | Part Number |
|------|-----------------------------|---------------|------|---------------------------------|-------------|
| 1 | Motor Housing | 327-40 | 17 | Cylinder | 327-3 |
| 1A | Warning Label | WARNING-21-99 | 18 | Rotor | 327-53 |
| 2 | Throttle Lever | 327-273 | 19 | Vane Packet (set of 4 Vanes) | 327-42-4 |
| 3 | Throttle Lever Pin | 327-120 | 20 | Front End Plate Assembly | 327-A11 |
| 4 | Inlet Bushing | 327-565 | 21 | End Plate Alignment Dowel | 327-98 |
| 5 | Exhaust Deflector | 327LS-123 | 21A | Cylinder Alignment Dowel | 327LS-98 |
| 6 | Muffler | 327LS-311 | 22 | Front End Bearing Spacer | 327-448 |
| 7 | Throttle Valve Assembly | 327-A302 | 23 | Front Rotor Bearing | 327-24 |
| 8 | Throttle Valve O-Ring | 327-159 | 24 | Motor Spindle (3/8" -24 thread) | 327-290 |
| 9 | Throttle Valve Spring | 327-51 | 26 | Motor Clamp | 327-107 |
| 10 | Air Regulator | 327-249 | 27 | Housing Cap | 327-23 |
| 11 | Air Regulator O-Ring | 327-251 | 28 | Nameplate | |
| 12 | Throttle Valve Cap Assembly | 327-A266 | | for 327 | 327-301 |
| 13 | Valve Cap O-Ring | 327-206 | | for 327-EU | 327-EU-301 |
| 14 | Rear End Plate Assembly | 327-A12 | 29 | Nameplate Rivets | 327-222 |
| 15 | End Plate Alignment Dowel | 327-98 | 30 | Chuck (3/8" capacity) | 7811-99 |
| 16 | Rear Rotor Bearing | 327-22 | 31 | Chuck Key | 7811-253 |

