

Futura Auto



# Futura Auto

## Electronic Key Cutting Machine

# Futura Auto

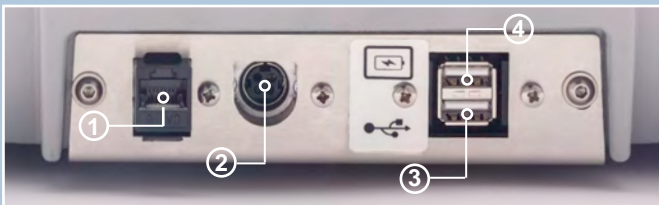
The electronic key cutting machine with one cutting station and two interchangeable clamps for duplicating and originating all types of automotive keys, including heavy trucks and motorcycles. Additional keys used for gas cap locks, glove boxes and roof racks are also included in the database.

Controlled by a removable 10" (254mm) touch-screen tablet, the Futura Auto guides the user step-by-step in all key cutting operations making it the perfect machine for those just getting into the automotive locksmith business or the seasoned professionals offering roadside services.



## Work Efficiencies

- User friendly software with step-by-step instructions
- Fast key search – simply enter Make/Model/Year and the software guides you through the process
- Details include a cutter holder, tool/accessory holder on top of the machine
- The color-changing LED lights help the operator to immediately see the process status:
  - white – machine is ready to proceed
  - yellow – machine is in the process of cutting the key,
  - green – key cutting is complete, and it is safe to raise the safety shield
- Wi-Fi link between machine and tablet or the user can tether the tablet directly to the machine
- Equipped with two USB ports on the back of the machine; one for tablet recharge and one for the tethering connection so the machine and tablet remain connected and operational even when the Wi-Fi connection is lost or unstable. The second USB port can also be used to connect the supplied USB flash drive to import code tables or machine software updates.
- Step-by-step instructions for updating machine software
- Software Interface with Instacode® and Kreate-A-Key™



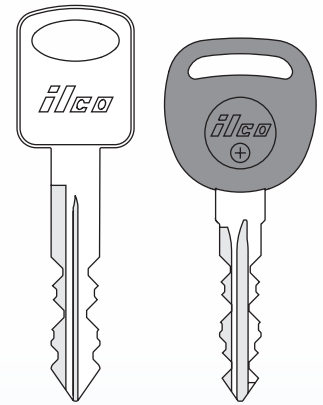
1 - Ethernet port  
2 - Power pack connector

3 - USB port standard  
4 - USB port for tablet charge



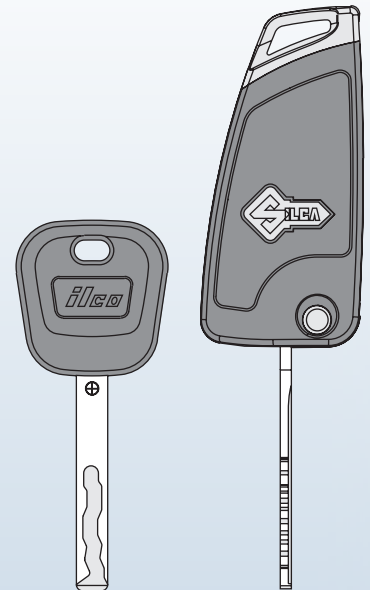
## Edge-Cut Automotive Keys

- 01VA four-sided clamp with easy rotation system
- Software indicates which of the four jaws to use for each key reference to minimize vibration and maximize quality of cut (keys are gripped on the milling groove to provide stability when cutting two-sided symmetrical keys)
- Automatic detection of the key blank edge
- Large flip-up gauge for perfectly aligning keys in the jaw
- Decoding by electrical contact
- “Partial cuts” function for broken keys, allows you to decode a portion of the key or enter the known cuts and create a “cutting tree” to minimize the number of keys needed to create a working key



## Laser Automotive Keys

- 01RA clamp secures laser keys on the neck of the blade eliminating the need for special jaws or adapters
- Automatic tip detection for tip gauged keys
- Decoding by electrical contact
- Key-cut preview
- Software indicates which of the three cutters provided you should use to optimize the cutting cycle of a laser key allowing you to maximize cut quality and minimize cutter wear



## Ease of Operation

- Generous sized working area, easily accessible and always clean thanks to the swarf collection system and the pull-down protective screen
- Shortcut function for vehicle key cutting code searches. Just input the first letters and the software will prompt the make and model your looking for, so you don't have to manually enter the entire field.
- Multi-language support

## Compact and Lightweight

- Compact, lightweight and portable with ergonomic grip for easy lifting
- Safety shield slides within the machine body making it perfect for small shops and vans
- Removable tablet stand can be locked onto the hood of the machine or placed on the counter

## Safety Features

- Transparent safety shield contains chips and isolates moving parts
- All operations are disabled immediately when safety cover is retracted
- Large emergency stop button on side of machine

# Technical Data

<b>Motor:</b>	24V DC
<b>Power Supply:</b>	90/264V AC 50/60Hz/220W MEANWELL GS220A24-R7B
<b>Tool Speed:</b>	12100 RPM
<b>Movements:</b>	3 axes (special bushings) driven by step motors on rectified roller guides
<b>Carriage Runs:</b>	Axis X: 1.18" (30mm) Axis Y: 1.97" (50mm) Axis Z: 1.06" (27mm)
<b>Dimensions:</b>	Width - 12.52" (318mm) Depth - 16.26" (413mm) Height - 20.47" (522mm), 13.38" (340mm) w/o tablet
<b>Weight:</b>	44 lbs. (20 kg)
<b>Warranty:</b>	2 Years (machine and tablet)

## Standard Parts / Accessories

<b>Cutters:</b>	12L HSS Super Rapid Steel - for edge-cut keys 01LW, 02LW, 06LW carbide, coated - for track keys
<b>Tracers:</b>	06T D953489ZR , 07T-Mobile D953488ZR
<b>Clamps:</b>	01RA D949928ZR w/Jaw 106 D949907ZR and Jaw 107 D949905ZR for laser keys 01VA D949854ZR for edge-cut keys
<b>Accessories:</b>	STOP 4 TOOL, Tip Stop Bar, Shoulder Stop Bar 01RA, USB Pen, 1.2/1.7mm shim pins, Brush, Mounting bracket, Stylus touch pen, Z3 calibration keys, 2.5mm "T" allen key, allen key set 1.5-5mm, A45 adapter, spare fuses, plastic tool box
<b>Optional:</b>	*02R Clamp D743275ZB for Tubular keys used on Harley Davidson® motorcycles *03R Clamp D743276ZB for Ford® Tibbe® FO21 keys

\* Optional Clamps are also used on Futura and Futura Pro.

All the brand and product names mentioned in this flyer are registered trademarks and exclusive property of authorized manufacturers. Said trademarks or trade names are nominated only for the purposes of information in order to be rapidly identified.

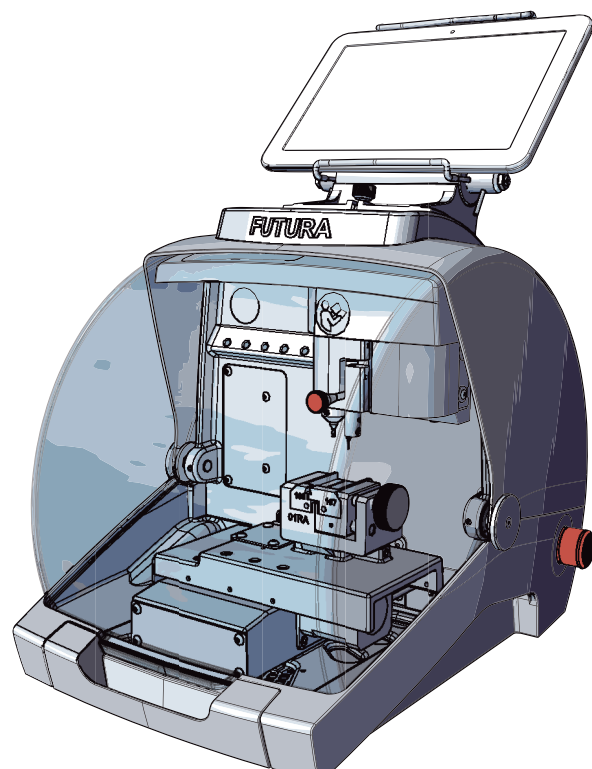
20190228



dormakaba Group



# FUTURA *AUTO* NA



## Exploded drawing and spare parts list

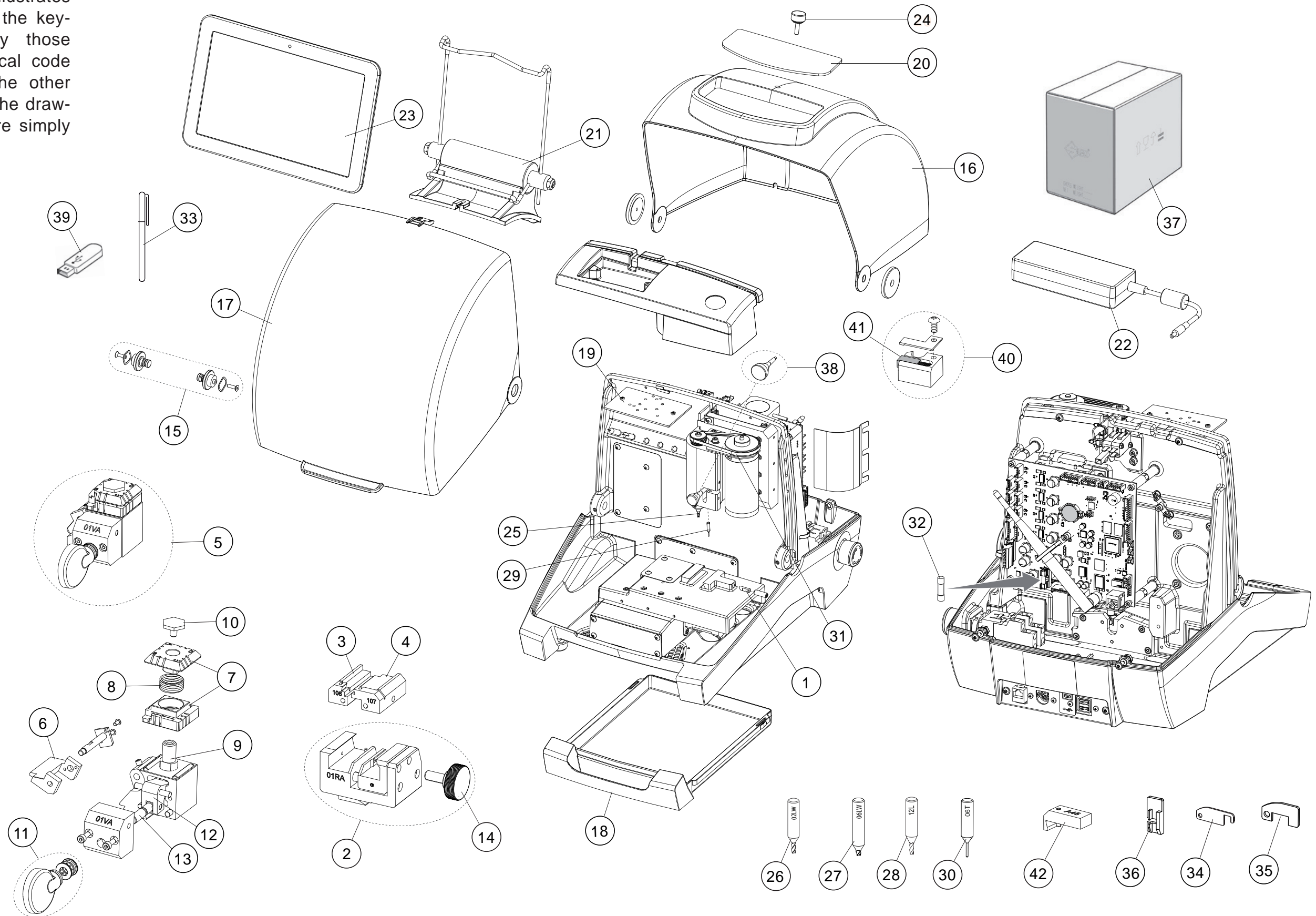
Attention: for repairs or replacement of parts for maintenance, the "CE" mark is guaranteed only if original spare parts provided by the manufacturer are used.  
Silca guarantees supplies of the listed spare parts for 7 years from the date the product is discontinued.

## FUTURA AUTO NA

Ref.	Code	
1	D908753ZR	PEG
2	D949928ZR	CLAMP 01RA
3	D949907ZR	JAW 106
4	D949905ZR	JAW 107
5	D949852ZR	CLAMP SET 01VA FLAT
6	D949920ZR	GAUGE 01VA
7	D949854ZR	01VA CLAMP JAWS
8	D901606ZR	CLAMP SPRING
9	D949856ZR	CLAMP PIN 01VA
10	D949855ZR	HEXAGONAL SCREW 01VA
11	D953491ZR	HANDLE SET 01VA
12	D949858ZR	LOCKING LEVER 01VA
13	D949860ZR	PUSHING PIN 01VA
14	D942575ZR	HANDLE CLAMP 01RA
15	D942612ZR	PAWL
16	D942854ZR	COVER
17	D947257ZR	TRANSPARENT PROTECTION
18	D944396ZR	CHIPPINGS TRAY
19	D949804ZR	LED LAMP WITH CABLE
20	D942998ZR	PAD
21	D943010ZR	TABLET HOLDER
22	D946433ZR	POWER PROVIDER
23	D949149ZR	TABLET
24	D943366ZR	HANDLE
25	D747838ZB	CUTTER 01LW
26	D747839ZB	CUTTER 02LW
27	D747840ZB	CUTTER 06LW
28	D749946ZB	CUTTER 12L
29	D953488ZR	TRACER POINT 07T - MOBILE
30	D953489ZR	TRACER POINT 06T
31	D942601ZR	BELT
32	D908726ZR	FUSES 4 AMP. - DELAYED
33	D944061ZR	TOUCH PEN
34	D943754ZR	STOP BAR
35	D949947ZR	STOP BAR 01RA
36	D946007ZR	TIP STOP
37	D949838ZR	PACKAGING
38	D946589ZR	HANDLE SET
39	D947837ZR	USB PEN
40	D953294ZR	COAL BRUSH SET
41	D949925ZR	COAL BRUSH
42	D953496ZR	ADAPTER A45 FUTURA AUTO

## IMPORTANT NOTE!

The exploded drawing illustrates all the components of the key-cutting machine. Only those marked with a numerical code are spare parts. All the other components shown in the drawing without numbers are simply illustrative.



D4A0477XA

FUTURA **AUTO** NA

If you're looking for quality key cutting machines & programmers, visit our website.