

Futura EDGE



# Futura EDGE Electronic Key Cutting Machine

## One Cutting Station for all Types of Edge-Cut Keys



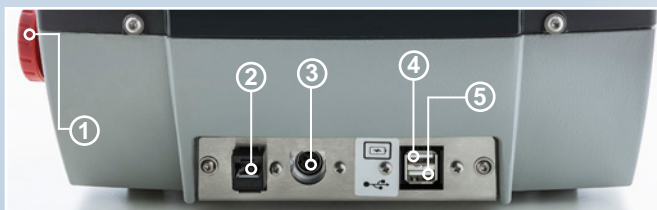
Built on the successful Futura platform, the Futura Edge is designed for edge cut keys. The Futura Edge will easily duplicate by copying from the original key, by indirect code or by direct code. Like the Futura Pro, this model is powerful enough for the professional and ideal for inexperienced users thanks to the software-guided procedures.

Controlled by a removable 10" (254mm) touch-screen tablet, the Futura Edge guides the user step-by-step in all key cutting operations: for example, in selecting the make, model and year for automotive keys, in the choice of the right clamp, how to load the key, etc.

The patented laser reading of the key profile makes the Futura the only electronic machine in the market that allows you to duplicate a flat key without first searching for the relevant cutting card.

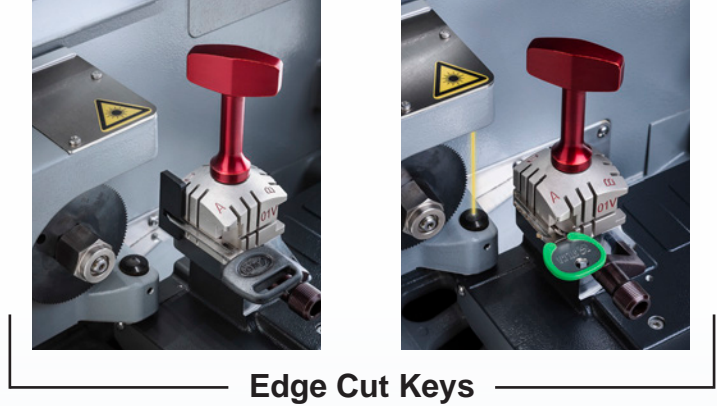
### Work Efficiencies

- Patented laser reading of the key profile, no need to search for the relevant cutting card.
- Nickel plated, 4-sided clamp with a patented, precise rotation system
- The color-changing LED lights indicates the status of the cutting process: white – ready to proceed, yellow – process of cutting, green – cutting is complete and it is safe to raise the safety shield.
- Wi-Fi link between machine and tablet or the user can tether the tablet directly to the machine.
- Equipped with two USB ports on the back of the machine; one for tablet recharge and one for the tethering connection so the machine and tablet remain connected and operational even when the Wi-Fi connection is lost or unstable. The second USB port can also be used to connect the supplied USB flash drive to import code tables or machine software updates.
- Optional Code Maker software allows user to create custom cutting cards for standard edge cut keys.
- Fast cutting cycles plus tablet and electronics that deliver fast start up and response times between the tablet and the machine .
- Exposed screws are stainless steel for wear resistance and longevity
- Software interfaces with Instacode® and Create-A-Key™



- 1 - ON/Emergency push button    4 - USB port for Tablet charge  
2 - Ethernet port                    5 - USB port standard  
3 - Power pack connector

**“As with all Futura models, the Futura Edge is engineered and manufactured to the highest quality standards so that you are assured of accurate and precise origination and duplication of edge cut keys.”**



Edge Cut Keys

## Edge Cut Station

- Duplicate by copying from the original key, indirect code or by direct code.
- Securely clamp standard residential/commercial keys on side A, smaller blade keys for padlocks, cabinets, etc. on side B
- Dedicated to Automotive are sides C and D (“tongue and groove system”) that allow for proper alignment of two-sided keys; even worn keys can be easily decoded
- Step-by-Step calibration instructions
- Optional 06V clamp allows for secure clamping of Best® style keys regardless of the key-way. The built-in tip stop makes gauging Best® keys simple and easy. Jaw A (same as on the 01V clamp) will be on the opposite side, so this jaw can be used for Best® type keys and standard edge cut keys. Simply install the 06V in place of the 01V on your Futura machine using the inner clamp spring from the 01V.



Tool / Accessory Tray



Removable Tablet w/ stand

## Ease of Operation

- Shortcut function for vehicle key cutting code searches eliminates manual entry. Simply input the first letters and the software will prompt the make and model for your selection
- Built-in tool/accessory tray on top of the machine
- Multi-language support

## Compact and Lightweight

- Compact, lightweight and portable with ergonomic grip for easy lifting.
- Mounting bracket included for securing the machine to the counter; perfect for mobile operations
- Safety shield slides within the machine body
- Removable tablet stand can be locked onto the hood of the machine or placed on the counter

## Safety Features

- Transparent safety shield contains chips and isolates moving parts
- All operations are disabled automatically when safety shield is retracted
- Large emergency stop button on side of machine



## Technical Data

<b>Motors:</b>	24V d.c., 5,5 Amp, 130W
<b>Power Supply:</b>	90/264V a.c - 50/60Hz
<b>Tool Speed:</b>	1500 RPM
<b>Prismatic Cutter:</b>	D747276ZR
<b>Movements:</b>	2 axes (special bushings) driven by step motors on rectified roller guides
<b>Carriage Runs:</b>	Axis X 1.18" (30mm) x Axis Y 1.97" (50mm)
<b>Dimensions:</b>	12.52" (318mm) W 16.26" (413mm) D 20.47" (522mm) H with tablet 13.38" (340mm) H without tablet
<b>Weight:</b>	35.3 lbs. (16 kg)
<b>Warranty:</b>	2 years (machine and tablet)

---

### STANDARD Parts/Accessories

<b>Clamp:</b>	01V D942846ZR
<b>Accessories:</b>	Stop 4 Tool, Stop Bars, USB Pen, Brush, Mounting Bracket, Stylus Touch Pen, Z3 Calibration Keys, Tools, Hex Wrenches, Spare Fuses

---

### OPTIONAL Parts/Accessories/Interface

<b>Jaw:</b>	D751896ZB 06V BEST JAW
-------------	------------------------

All the brand and product names mentioned in this flyer are registered trademarks and exclusive property of authorized manufacturers. Said trademarks or trade names are nominated only for the purposes of information in order to be rapidly identified.

20180619



dormakaba Group

## PEAKS® / BEST® Clamp for Futura Machines



## PEAKS® / BEST® Clamp for Futura Machines

Eliminate the hassle of tip-stopping Kaba Peaks® and Best® keys with the new 07V clamp for the Futura, Futura PRO and Futura Edge. The optional 07V clamp has a built-in tip stop to allow the user to easily clamp all current keyways for Kaba Peaks® and Best® keys.

Jaw position E (BEST®) is designed for clamping Best® keys that have 0.150" spacing between cuts and can also be used for the Peaks® applications that utilize the 0.150" spacing. Jaw position F is used for the Peaks® systems utilizing 0.140" spacing. Simply install the 07V in place of the 01V and calibrate the clamp to the machine.

You must have a current software subscription to update the Futura software to allow use of the 07V clamp. The first time you use the specific card you will need to go into "Card Options" and select the 07V Clamp.

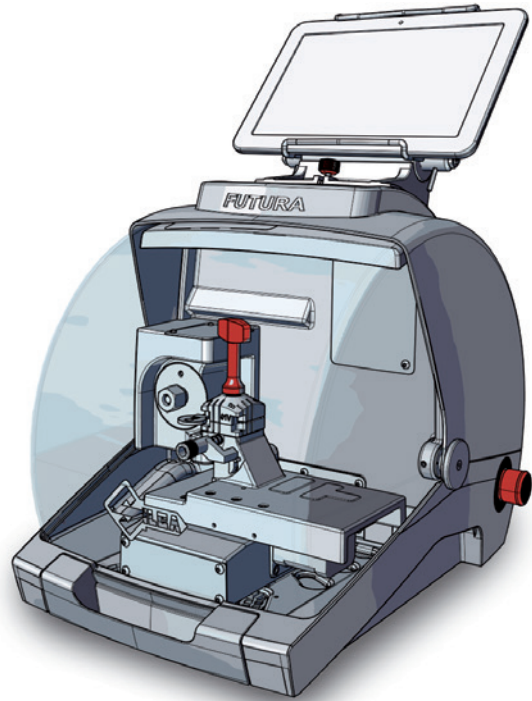
How to order:

Order No.: BJ1358XXXX D749960ZB 07V PEAKS / BEST JAW (FUTURA)





# FUTURA EDGE NA

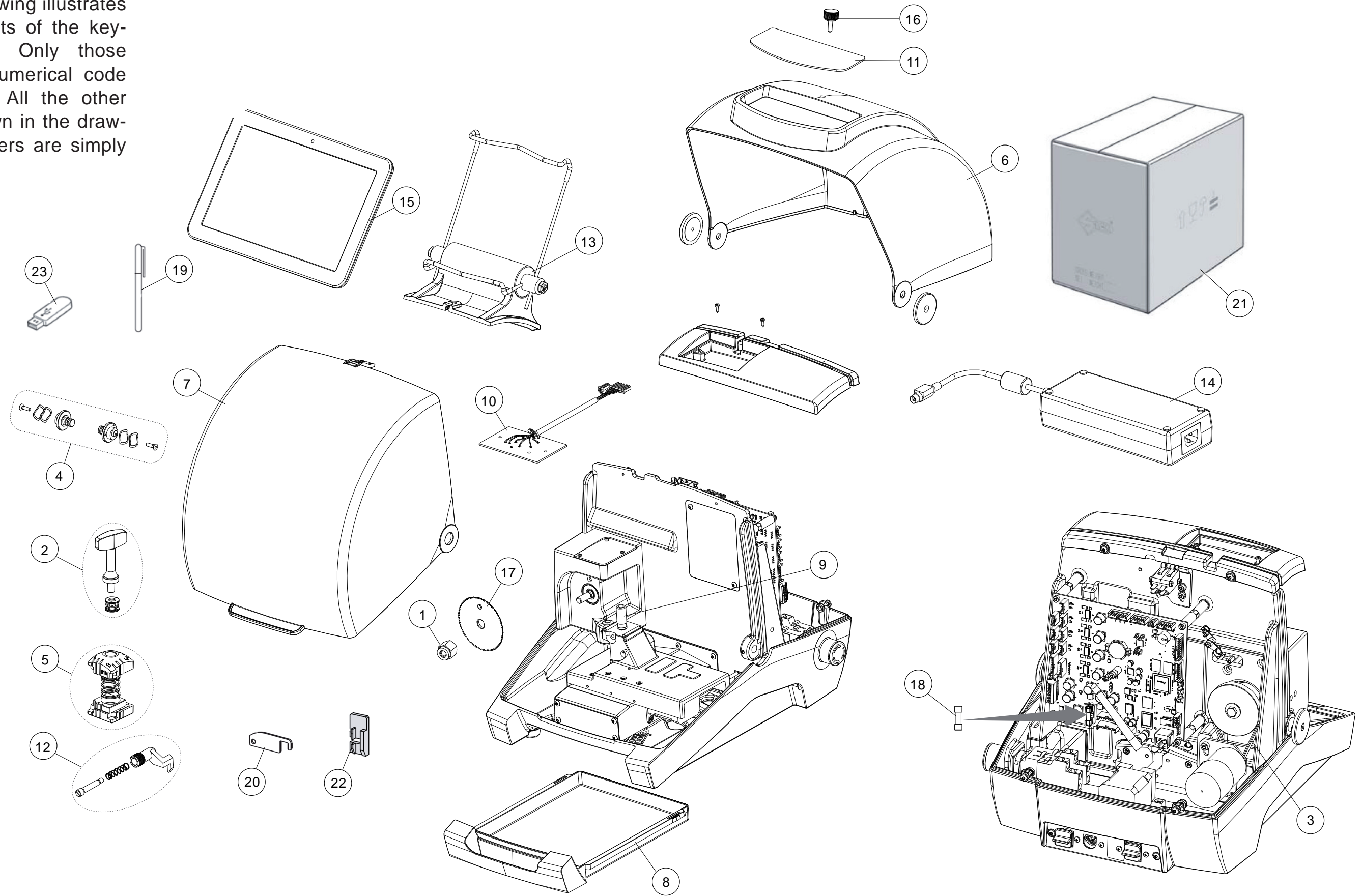


*Exploded drawing and spare parts list*

Ref.	Code	
1	D906035ZR	CUTTING TOOL NUT
2	D947243ZR	CLAMP 01V KNOB
3	D946446ZR	BELT (FLAT)
4	D942612ZR	PAWL
5	D942846ZR	CLAMP 01V
6	D952136ZR	MACHINE COVER
7	D947257ZR	TRANSPARENT PROTECTION
8	D944396ZR	CHIPPINGS TRAY
9	D942985ZR	READER PIN
10	D949804ZR	LED LAMP WITH CABLE
11	D942998ZR	PAD
12	D943003ZR	GAUGE
13	D949404ZR	TABLET HOLDER
14	D946433ZR	POWER PROVIDER
15	D949149ZR	TABLET
16	D949144ZR	HANDLE
17	D747276ZB	CUTTER 01F
18	D908726ZR	FUSES 4 AMP. - DELAYED
19	D944061ZR	TOUCH PEN
20	D943754ZR	STOP BAR
21	D949838ZR	PACKAGING
22	D946007ZR	TIP STOP
23	D947837ZR	USB PEN

## IMPORTANT NOTE!

The exploded drawing illustrates all the components of the key-cutting machine. Only those marked with a numerical code are spare parts. All the other components shown in the drawing without numbers are simply illustrative.



D444947XA

# FUTURA EDGE NA

If you're looking for quality key cutting machines & programmers, visit our website.