

Key Machines

Matrix II

*Manual Key Duplicator for
Automotive High Security Keys*



The Matrix II is a high performance machine that provides precision duplication of laser style keys. The features of this premium model include LED lighting and electromechanical calibration. The compact design and weight make this model suitable for either counter or mobile use.

The  to your success

ilco

Matrix II

The "premium" machine for the duplication of high security laser and Tibbe® style keys.

The line of Matrix key machines has been the trusted laser key duplicating machine for many years. With the Matrix II, you will find the same rugged construction combined with many user preferred features that have made the Matrix the professional's choice for high security key duplication.

- **Electromechanical calibration (green light and audible sound indicate completed calibration)**
- **Convenient, manual power switch for LED light above work area**
- **Wide transparent safety shield minimizes exposure to moving parts and chips during operation.**
- **Convenient built-in storage tray on hood of machine for key blanks or tools**
- **Z-axis locks in place with twist of lever**
- **Separate push button micro-switch to activate cutter**
- **Z-axis lever controlled cutter motor for added safety**
- **Quiet cutting cycle**
- **HSS (High Speed Steel) cutters and tracers improve cutter life.**
- **Cutter and tracer feature colored plastic collars for easy identification.**
- **Easy access tool and accessory storage drawer**
- **Ergonomic designed levers require minimal effort to operate**
- **Spring loaded table applies steady cutting pressure**
- **Replaceable jaw surface plates provide an economical repair (normal wear) solution**
- **Optional accessories available to expand capabilities (i.e. laser key code attachments, Tibbe® code attachments for Ford® and Jaguar®, optional cutters and tracers)**



Specifications:

- Width:** Footprint 12.2" (310 mm), 15.75" (400 mm) including side lever
- Height:** 18.5" (470 mm)
- Depth:** 15.75" (400 mm)
- Weight:** 54.23 lbs. (24.6 kg)
- Voltage:** 100/120V-50/60Hz, 2.3 Amp, 220 Watt
- Motor:** Single Phase 1 speed; 6000 Rpm

Replacement Parts:

- Standard Cutter:** F22 D739973ZB High Speed Steel (HSS); Tool Speed: 6,000 rpm
- Standard Tracer:** T22 D739974ZB

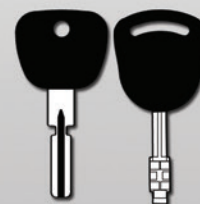
*Optional Accessories:

- BD0722XXXX Mercedes® Clamp Adapter set
- BD0723XXXX VW®/Audi® Clamp Adapter set
- BD0725XXXX Lexus®/Toyota® Wallet Key Adapter

Ford® and Jaguar® Tibbe® and other Laser/Sidewinder code attachments are also available.

*Contact Iico for a complete list of optional accessories for the Matrix II

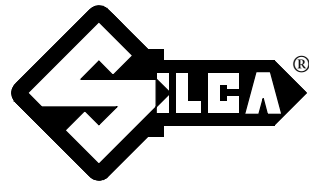
Duplicates High Security Automotive Keys



CE Machine built to CE standards

Brand names and/or trademarks shown are the intellectual property of the respective companies

The  to your success



MATRIX II

120V - 60Hz



Exploded drawing and spare parts list

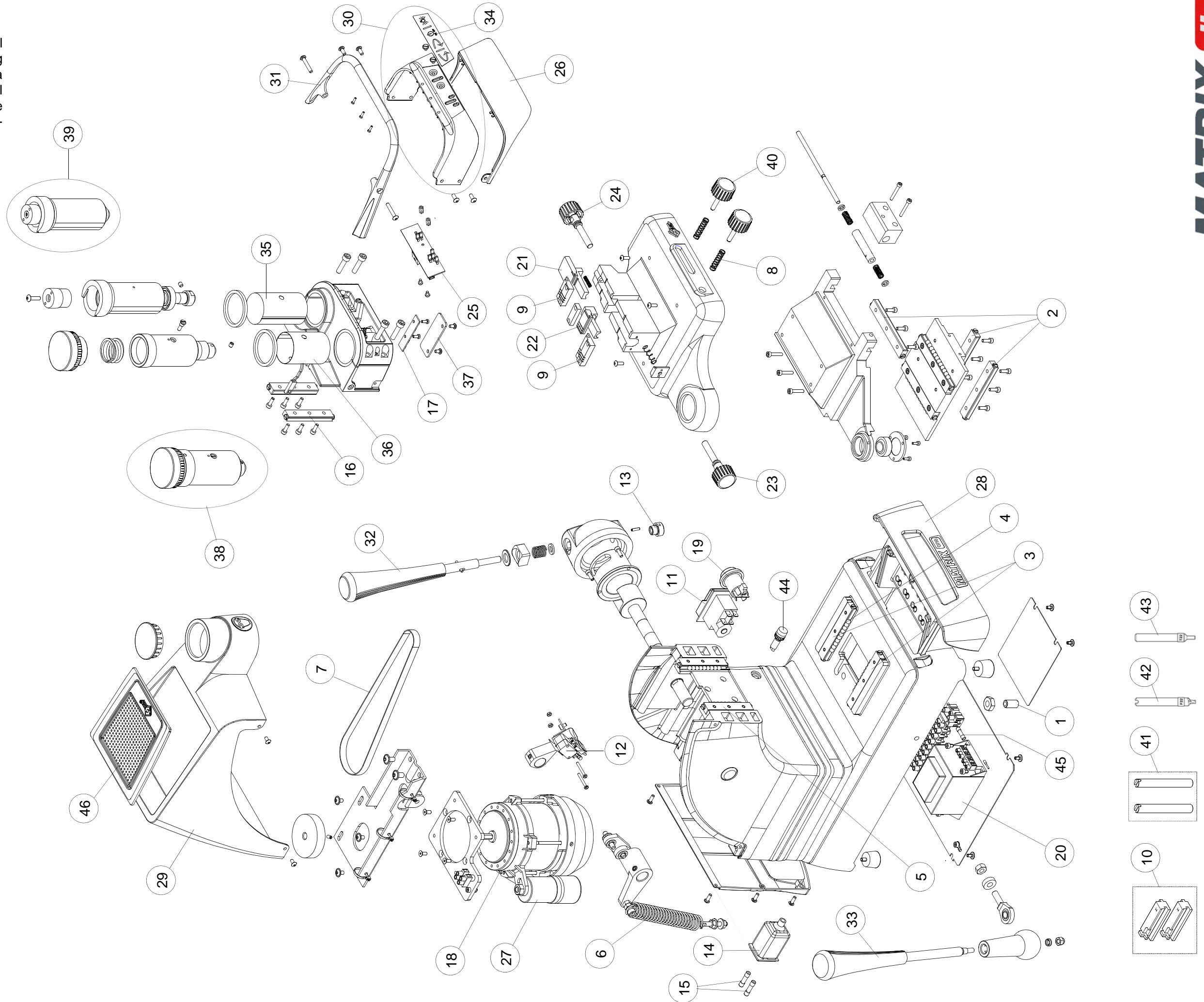
Attention: for repairs or replacement of parts for maintenance, the "CE" mark is guaranteed only if original spare parts provided by the manufacturer are used.
Silca guarantees supplies of the listed spare parts for 7 years from the date the product is discontinued.

MATRIX II 120V-60Hz

Ref.	Code	
1	D901041ZR	BALL SHUTTER
2	D910473ZR	CLAMP CARRIAGE GUIDE
3	D910785ZR	CLAMP CARRIAGE GUIDE
4	D910571ZR	BALLS SET Ø 6 (12 pcs)
5	D941719ZR	VERTICAL CARRIAGE GUIDE
6	D910558ZR	VERTICAL CARRIAGE SPRING
7	D910605ZR	FLAT BELT
8	D910748ZR	SPRING
9	D910490ZR	FIXED JAW
10	D910533ZR	ADAPTER MERCEDES
11	D935741ZR	MASTER SWITCH
12	D910904ZR	MICROSWITCH
13	D910523ZR	THREADED BUSH
14	D933021ZR	POWER SUPPLY (WIRED)
15	D906748ZR	FUSES 6,3 AMPS - RAPID
16	D939296ZR	VERTICAL CARRIAGE GUIDE
17	D939445ZR	LED LAMP
18	D940306ZR	MOTOR 120/60
19	D939646ZR	BLUE SWITCH
20	D938560ZR	UNIVERSAL TRANSFORMER
21	D910488ZR	MOBILE JAW FOR RIGHT CLAMP
22	D910489ZR	MOBILE JAW FOR LEFT CLAMP
23	D943166ZR	LEFT CLAMP KNOB
24	D943168ZR	RIGHT CLAMP KNOB
25	D940571ZR	LED KEYPAD CARD
26	D940029ZR	PROTECTION
27	D940845ZR	CONDENSER 14 µF
28	D939830ZR	TOOLS HOLDER DRAWER
29	D939824ZR	TOP COVER
30	D940550ZR	VERTICAL CARRIAGE CASING
31	D939839ZR	ROLLBAR
32	D939394ZR	LEVER
33	D940027ZR	CLAMP CARRIAGES LEVER
34	D939838ZR	ADHESIVE KEYPAD
35	D939294ZR	INSULATING PLATE - CUTTER SIDE
36	D939295ZR	INSULATING PLATE - TRACER POINT SIDE
37	D939640ZR	LED PROTECTION
38	D942539ZR	TRACER POINT SET - USA
39	D939311ZR	CUTTER SHAFT SET
40	D939826ZR	SPRING KNOB
41	D939641ZR	SETTING PIN SET
42	D739973ZB	CUTTER F22
43	D739974ZB	TRACER POINT T22
44	D940535ZR	MOTOR WARNING LIGHT 110V
45	D940587ZR	FUSE 500 mA - RAPID
46	D939825ZR	PAD
47	D939638ZR	BACK PANNELL

IMPORTANT NOTE!

The exploded drawing illustrates all the components of the key-cutting machine. Only those marked with a numerical code are spare parts. All the other components shown in the drawing without numbers are simply illustrative.



Check out the collection of key cutting machines & programmers we offer.