

Key Machines

Twister II

*Automotive High Security &
Flat Dimple Keys
Manual Duplicator*



The Twister II delivers consistent and accurate duplicates of a wide range of “laser” (sidewinder), flat cut dimple and Fichet® type keys. An economical model; the Twister II provides for expansion of capabilities with the optional accessories.

The  to your success



Twister II

Twister II provides an economical solution to duplicating a variety of keys on one machine. Easy to use, reliable, compact, and built to last; the Twister II offers convenience, accuracy and precision assured by the combination of the functional features listed below.

With the modest price point, and a higher re-sell price of the keys that the Twister II will duplicate, you can quickly offset the purchase price of this machine.

- **Two axis movement on ball guides for smooth, easy operation without play**
- **Spring loaded tracer point guides and facilitates self-centering of cuts on dimple keys**
- **Wide transparent safety shield minimizes exposure to moving parts and chips during operation.**
- **LED light illuminates working area**
- **Tracer point adjustment ensures perfect depth alignment and provides for adjustment to worn keys**
- **Lockable carriage for cutting dimple keys and prevents movement during transport**
- **Replaceable jaw surface plates provide an economical repair solution for normal vise jaw wear**
- **Master safety switch with separate cutter motor switch.**
- **Quiet cutting cycle.**
- **Standard accessories include a HSS 2.5mm cutter and tracer for laser keys and a HSS .65mm cutter and tracer for dimple keys**
- **Optional cutters, tracers, and accessories expand capabilities**
- **Light weight, compact design with a small footprint**
- **Designed and produced to CE mark European standards**

Specifications:

Dimensions:	14.6" H x 9.8" W X 14.6 D (370 mm x 250 mm x 370 mm)
Weight:	53 lbs. (24 kg)
Voltage:	120V-50/60Hz
Motor:	One-speed single phase
Tool speed:	6000 rpm (+/- 10%)

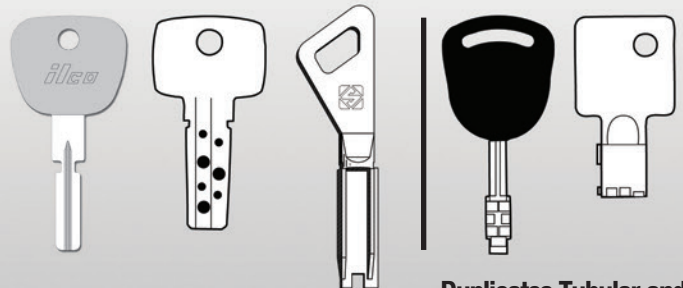
Replacement Parts:

Laser Cutter:	FE04 D741433ZB High Speed Steel (HSS)
Laser Tracer:	TE04 D741432ZB
Dimple Cutter:	FE01 D741127ZB High Speed Steel (HSS)
Dimple Tracer:	TE01 D741128ZB
Vise Jaw Surface Plate:	D945438ZR Jaws Set


Optional Accessories:

D741428ZB:	Device for Clamping Tubular Keys
D741439ZB:	FE07 Cutter for Tubular Keys
D741438ZB:	TE07 Tracer for Tubular Keys
D741409ZB:	Ford® Tibbe® Code Attachment

Duplicates High Security Flat Dimple, Fichet® type



Duplicates Tubular and Tibbe® (with optional accessories)

 Machine built to CE standards

Brand names and/or trademarks shown are the intellectual property of the respective companies

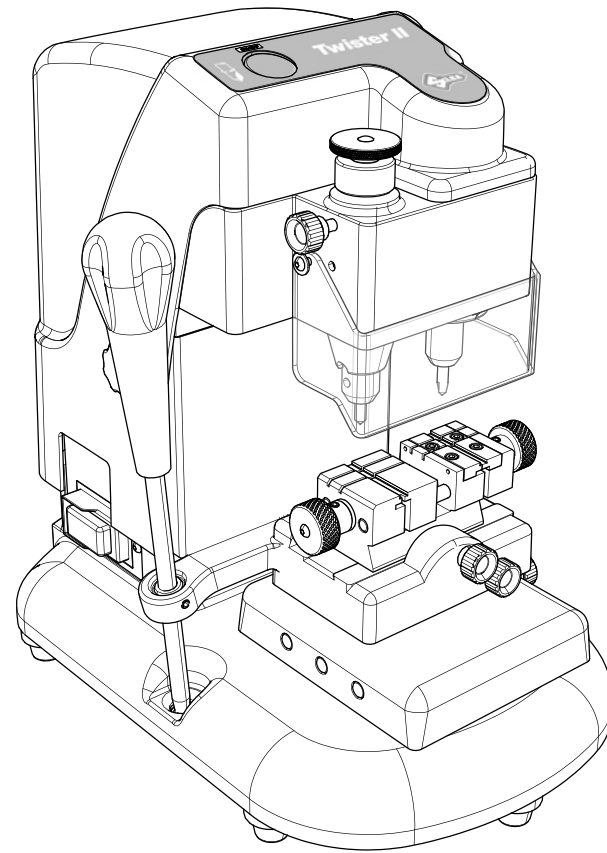




Twister II NA 120V-60Hz

Twister II NA

120V - 60Hz



Ref.	Code	
1	D941088ZR	CUTTER SET
2	D941092ZR	TRACER POINT SET
3	D941118ZR	CLAMP
4	D941069ZR	SPRING
5	D941258ZR	WHITE SWITCH
6	D941113ZR	BELT
7	D941308ZR	MOTOR 120/60
8	D941318ZR	FUSIBLES 8 AMP - DELAYED
9	D941105ZR	FILTER SOCKET
10	D941126ZR	CLAMP LOCKING PIN
11	D941076ZR	CARRIAGE GUIDE
12	D941261ZR	SPHERES D.6
13	D741127ZB	CUTTER FE01 FOR DIMPLE KEYS
14	D741128ZB	TRACER POINT TE01 FOR DIMPLE KEYS
15	D741432ZB	TRACER POINT TE04 FOR LASER KEYS
16	D741433ZB	CUTTER FE04 FOR LASER KEYS
17	D945448ZR	COVER TWISTER II NA
18	D944647ZR	KNOB SET
19	D934625ZR	LAMP GLASS
20	D941086ZR	CLAMP CARRIAGES LEVER
21	D941066ZR	VERTICALCARRIAGE LEVER
22	D944855ZR	KNOB
23	D945438ZR	JAWS SET
24	D941125ZR	CLAMP KNOB
25	D935741ZR	SWITCH 120V
26	D944842ZR	LED LAMP 110V
27	D941117ZR	PROTECTIVE SHIELD

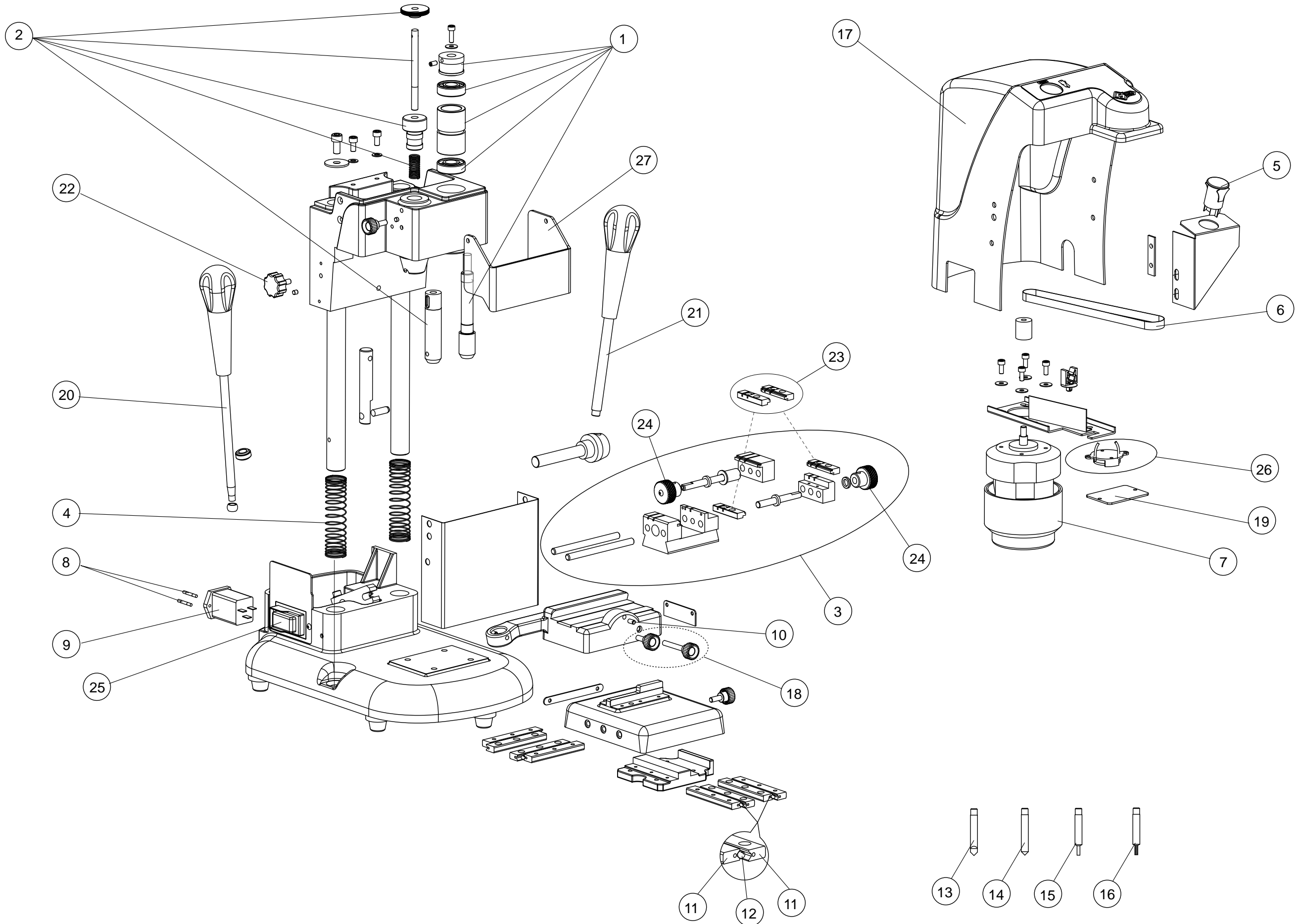
Exploded drawing and spare parts list

Attention: for repairs or replacement of parts for maintenance, the "CE" mark is guaranteed only if original spare parts provided by the manufacturer are used.

Silca guarantees supplies of the listed spare parts for 7 years from the date the product is discontinued.

IMPORTANT NOTE!

The exploded drawing illustrates all the components of the key-cutting machine. Only those marked with a numerical code are spare parts. All the other components shown in the drawing without numbers are simply illustrative.



Twister II NA 120V-60Hz

Check out the collection of key cutting machines & programmers we offer.