



Flash 008

Mechanical Key Duplicator

Flash 008



Smooth carriage movements The space-saving rotating knob ensures precise horizontal movements. The carriage can also be easily moved manually using the front lever.

Lightweight, compact and easy to operate

Flash 008 is easy to use and features long lasting materials and finishes. Lightweight and compact, it is perfect for small shops and mobile use.

Four-sided clamps mean flexibility of use

Four-sided jaws easily clamp virtually all edge cut keys present on the market. Jaws are nickel coated to provide longer life. The jaws can be quickly and smoothly rotated by simply loosening the knob and rotating the jaw into the proper position.

3 1/2" (88.9 mm) spacing between the jaws accommodate large bow (head) and long blade keys including flip style automotive keys.



Flash 008 is designed to cut typical residential, automotive and commercial keys including those with large bows or long blades such as cruciform keys as well as tip stop and flip-type keys.

Optimized calibration A tracer point adjustment system provides fast, precise calibration.

Wear resistant components

The cutter is AlTiN (Aluminum Titanium Nitride) coated for longer life and oxidation resistance even at temperatures up to 800°C (1,472°F). Teflon® coated bushings provide protection to the carriage shaft and guarantee a smoother, quieter movement.



Space-saving solution for fixed or mobile use

Flash 008 is lightweight, compact and easily transportable. Secure the machine to the work counter with the mounting bracket (included).

Operator safety The on-off switch features a safety cut-out for user protection (machine must be manually re-started after a power interruption).

Finish cut keys perfectly The nylon de-burring brush bristles are perfect for the finishing of cut keys.

Technical Data

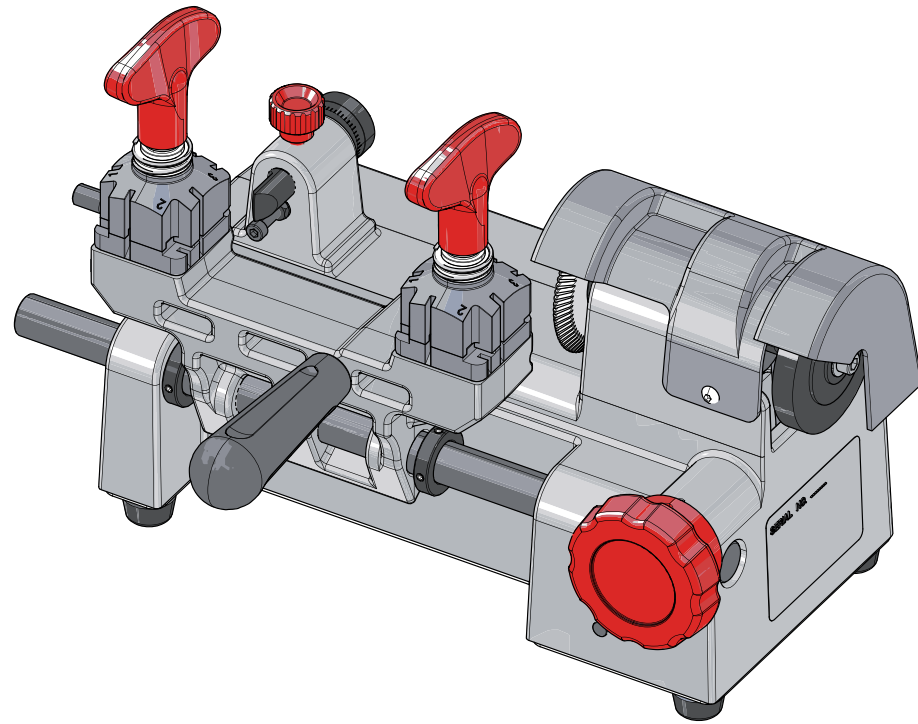
Power Supply:	120V-60Hz
Cutter motor:	single phase and speed
Movements:	by rectified carriage shaft and rack
Cutter:	AlTiN coated HSS (Super Rapid Steel)
Carriage Runs:	1.65" (42 mm)
Dimensions:	Width: 12.2" (310 mm) Depth: 9.5" (240 mm) Height: 8.7" (220 mm)
Weight:	14 lbs (6.4 kg)





FLASH 008

120V - 50/60Hz



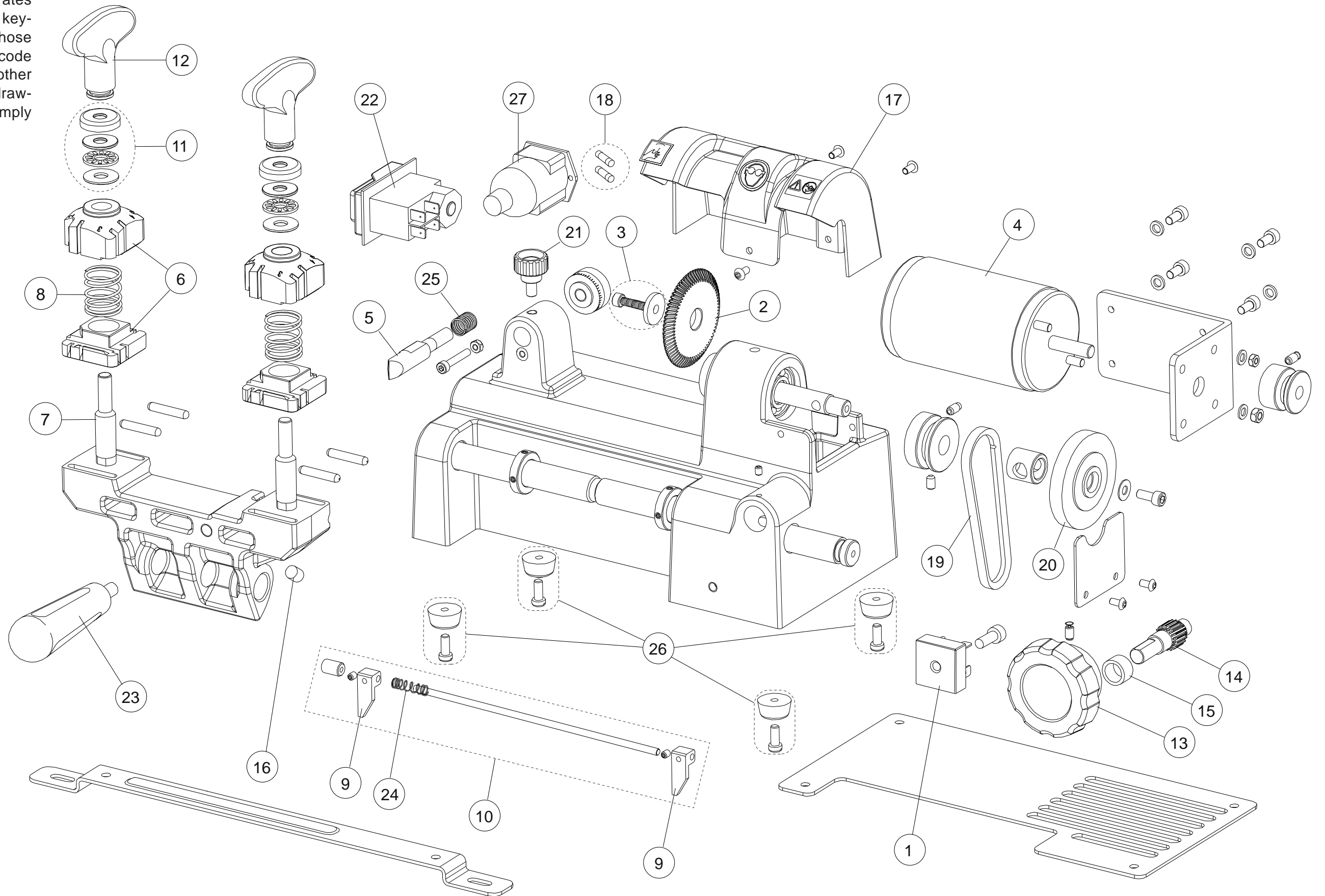
Exploded drawing and spare parts list

Attention: for repairs or replacement of parts for maintenance, the "CE" mark is guaranteed only if original spare parts provided by the manufacturer are used.
Silca guarantees supplies of the listed spare parts for 7 years from the date the product is discontinued.

Ref.	Code	
1	D945845ZR	DIODE BRIDGE RECTIFIER
2	D945810ZR	PRISMATIC CUTTER
3	D945851ZR	SCREW FOR CUTTER
4	D945938ZR	MOTOR 120V-60Hz
5	D945815ZR	ROUNDED TRACER
6	D945462ZR	CLAMP ASSEMBLY
7	D745860ZB	CLAMP PIN
8	D901606ZR	CLAMP SPRING
9	D934647ZR	KEY STOP
10	D946473ZR	KEY STOP ASSEMBLY
11	D945856ZR	BALL WASHER AND CAP
12	D945808ZR	CLAMP KNOB
13	D945806ZR	KNOB FOR CARRIAGE SHAFT
14	D945803ZR	PINION SHAFT
15	D945804ZR	BRONZE BUSH
16	D945801ZR	CARRIAGE RESTER
17	D945834ZR	BELT AND CUTTER COVER
18	D901185ZR	FUSES 4 AMP. RAPID
19	D945855ZR	BELT
20	D945853ZR	NYLON BRUSH
21	D946472ZR	TRACER RED KNOB
22	D925500ZR	ELECTROMAGNETIC SWITCH 120V
23	D934690ZR	CARRIAGE HANDLE
24	D934965ZR	KEY STOP SPRING
25	D945818ZR	TRACER SPRING
26	D901045ZR	RUBBER FEET
27	D934656ZR	POWER SOCKET

IMPORTANT NOTE!

The exploded drawing illustrates all the components of the key-cutting machine. Only those marked with a numerical code are spare parts. All the other components shown in the drawing without numbers are simply illustrative.



FLASH 008 120V-50/60Hz

If you're looking for quality key cutting machines & programmers, visit our website.