

PART #	DESCRIPTION
76550	15-UP COLORADO 0-2" REAR 2.0 VS IR SHOCK

COMPONENTS INCLUDED	
(1) 174935 15+ COLORADO 0-2" REAR 2.0 VS IR UPKG	
HARDWARE INCLUDED	
N/A	
TOOLS REQUIRED	
JACK JACK STANDS	21MM SOCKET / WRENCH TORQUE WRENCH
TECH NOTES	
1. IT IS EASIEST TO INSTALL THESE SHOCKS WITH THE AXLE AT FULL DROOP. COMPRESSING THE SHOCKS BY HAND IS DIFFICULT.	

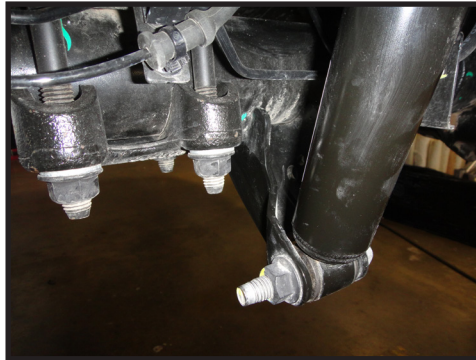


WARNING!
** READ ALL INSTRUCTIONS THOROUGHLY FROM START TO FINISH BEFORE BEGINNING INSTALLATION! IF THESE INSTRUCTIONS ARE NOT PROPERLY FOLLOWED SEVERE FRAME, SUSPENSION AND TIRE DAMAGE MAY RESULT TO THE VEHICLE!
** ICON VEHICLE DYNAMICS RECOMMENDS THAT YOU EXERCISE EXTREME CAUTION WHEN WORKING UNDER A VEHICLE THAT IS SUPPORTED WITH JACK STANDS.

INSTALLATION

- Using a properly rated jack, lift the rear of the vehicle and support the frame rails with jack stands. Ensure jack stands are secure and set properly before lowering the jack. BE SURE TO NEVER WORK UNDER AN UNSUPPORTED VEHICLE. Remove the wheels.
- Remove the OEM rear shocks using a 21mm socket/wrench. (FIGURE 1)

FIG.1



- Install ICON shock upside down with the shaft pointing up. Installing right side up requires significant sanding to clear the top cap and is not recommended.

- Install the upper bolt first using a 21mm socket/wrench. [Torque to factory spec] (FIGURE 2)

FIG.2



5. Install the lower bolt using a 21mm socket/wrench. It helps to have the axle fully drooped for this step. [Torque to factory spec]
(FIGURE 3)

FIG.3



6. Remove vehicle from jackstands.

VERIFY ALL FASTENERS ARE PROPERLY TORQUED BEFORE DRIVING VEHICLE.

RETORQUE ALL NUTS, BOLTS AND LUGS AFTER 100 MILES AND PERIODICALLY THEREAFTER.