

PART #	DESCRIPTION
64045	2011-UP FSD RADIUS ARM DROP KIT

COMPONENTS INCLUDED	
(1) 164028 11+ FSD RADIUS ARM BRACKET (DRVR) (1) 164029 11+ FSD RADIUS ARM BRACKET (PASS)	(1) 64045H HARDWARE KIT
HARDWARE INCLUDED	
64045H HARDWARE KIT	
(6) 605200 7/16-14 X 1.500 (6) 605220 7/16-14 NYLOCK NUT (12) 605230 7/16 SAE FLAT WASHER	(4) 605601 3/4-10 X 5.500 (4) 605620 3/4-10 NYLOCK NUT (8) 605630 3/4 SAE FLAT WASHER
TOOLS REQUIRED	
JACK JACK STANDS DRILL 7/16" DRILL BIT TORQUE WRENCH 5/8" SOCKET / WRENCH 1 1/8" SOCKET / WRENCH	10MM SOCKET / WRENCH 13MM SOCKET / WRENCH 15MM SOCKET / WRENCH 18MM SOCKET / WRENCH 24MM SOCKET / WRENCH 27MM SOCKET / WRENCH
TECH NOTES	
N/A	



WARNING!
** READ ALL INSTRUCTIONS THOROUGHLY FROM START TO FINISH BEFORE BEGINNING INSTALLATION! IF THESE INSTRUCTIONS ARE NOT PROPERLY FOLLOWED SEVERE FRAME, SUSPENSION AND TIRE DAMAGE MAY RESULT TO THE VEHICLE!
** ICON VEHICLE DYNAMICS RECOMMENDS THAT YOU EXERCISE EXTREME CAUTION WHEN WORKING UNDER A VEHICLE THAT IS SUPPORTED WITH JACK STANDS.
** ICON VEHICLE DYNAMICS RECOMMENDS ALL INSTALLTION TO BE PERFORMED BY A PROFESSIONAL SHOP/SERVICE TECHNICIAN. PRODUCT FAILURE CAUSED BY IMPROPER INSTALLATION WILL NOT BE COVERED UNDER ICON'S WARRANTY POLICY.

INSTALLATION

NOTE: If installing in conjunction with a box kit, skip to step 7.

- Using a properly rated jack, raise the front of the vehicle and support the frame rails with jack stands. Ensure the jack stands are secure and set properly before lowering the jack. NEVER WORK UNDER AN UNSUPPORTED VEHICLE. Remove the front wheels.
- Remove the sway bar links from the sway bar using an 18mm socket/wrench. Leave them connected to the differential. [FIGURE 1]

FIG.1

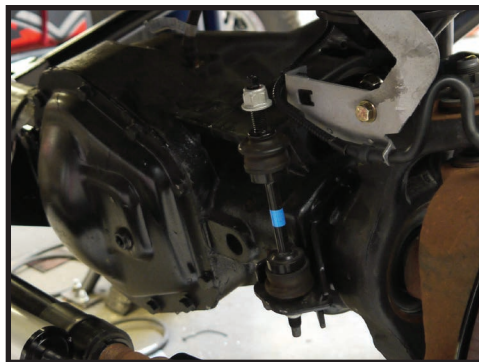
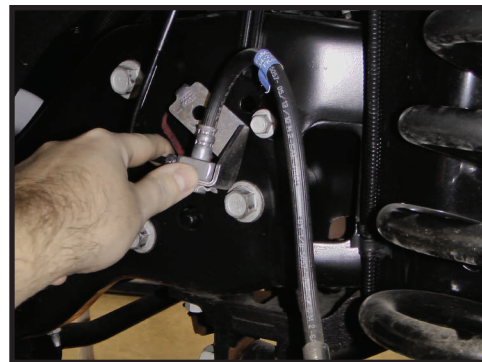


FIG.2



- Disconnect the upper brake line brackets from the frame using a 13mm socket/wrench and lower brake line brackets from the differential using a 10mm socket/wrench. [FIGURE 2]

4. On the driver side of the track bar remove the nut and the upper track bar bolt using two 30mm sockets/wrenches. [FIGURE 3]

FIG.3



5. Support the axle with a floor jack and remove the front shocks. The shocks are limiting droop so make sure the axle is securely supported or it will drop when the shocks are removed. Use an 18mm socket/wrench to remove the lower bolt.

6. As you slowly lower the axle, the coils will unload from the mounts. Be careful not to stretch or damage any lines connected to the differential or radius arms.

7. Some trucks have a transfer case skid plate that must be removed first. Use a 15mm socket/wrench to loosen and then remove the nut clips from the frame.

8. With both coils unloaded, the radius arms have little force on them and can be safely removed from the frame mount. Use a 27mm and a 30mm socket/wrench.

9. Position the driver side radius arm bracket into the stock radius arm pocket. Loosely install the supplied (605601) bolts with (605230) washers into the front frame and radius arm bracket holes. [FIGURE 4]

FIG.4



10. Rotate the bracket up until it meets the frame. Install (605200) bolts with (605230) washers and (605220) nylock nuts through the 2 holes in the bottom of the frame rail. [Torque to 55 ft-lbs]

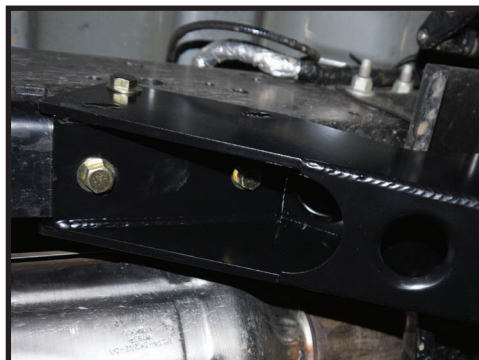
11. Use the bracket as a guide to center punch and drill 7/16" hole on the side of the frame. Deburr hole and install a (605200) bolt with (605230) washer and (605220) nut. [Torque to 55 ft-lbs]

12. On the passenger side, the hole in the side of the frame is there but the two holes in the bottom of the frame will need to be drilled. Using the bracket as a guide, center punch and drill the holes on the bottom for the frame to 7/16". Install both (605200) bolts [Torque to 55 ft-lbs] [FIGURE 5 & 6]

FIG.5



FIG.6



13. Install two (605601) remaining bolts in the remaining frame/bracket hole.

14. You should have both of the frame brackets installed loosely on the vehicle. [Torque 3/4 bolts to 260 ft-lbs] [Torque stock bolts to factory spec]

15. Move the radius arms up into the pockets of the drop bracket and install the factory bolt. Tighten using a 27mm and a 30mm socket/wrench. [Torque to factory spec]

- 16.** Use a jack to raise the axle high enough to install the shocks. Be careful not to lift the truck off of its supports.
- 17.** Tighten the front shocks using an 18mm socket/wrench. [Torque to factory spec]
- 18.** Install the sway bar to the sway bar links, then tighten using an 18mm socket/wrench. [Torque to factory spec]
- 19.** Connect the track bar using the factory bolt and two 30mm sockets/wrenches. [Torque to factory spec].
- 20.** Install the upper brake line brackets using a 13mm socket/wrench and lower brake line brackets using a 10mm socket/wrench. [Torque to factory spec]
- 21.** Install the front wheels and lower the vehicle back to the ground. [Torque to factory spec]
- 22.** Have the vehicle professionally aligned.