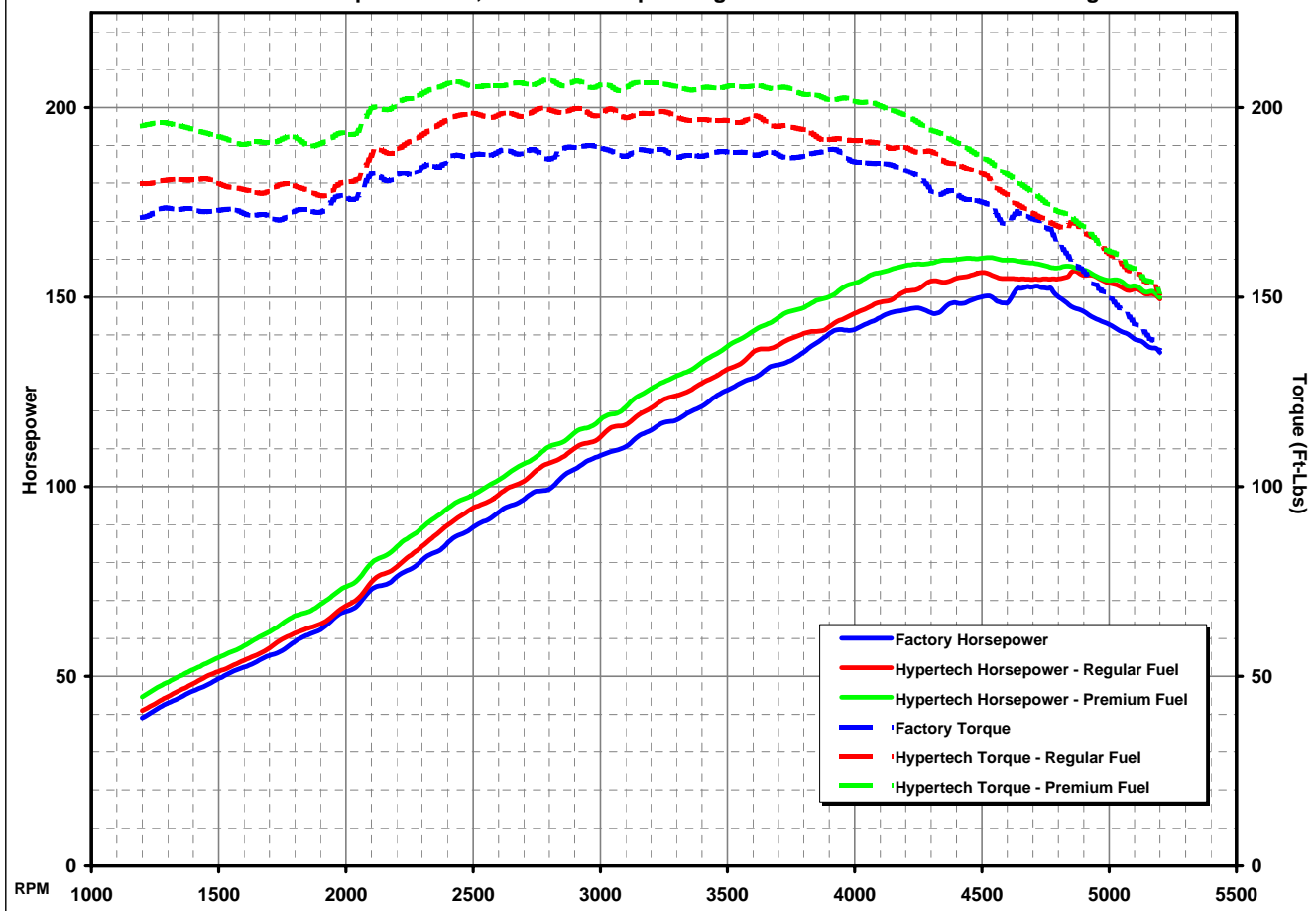


# HYPERTECH DYNAMOMETER TEST RESULTS

2000-2001 Jeep Cherokee, 2000-2004 Jeep Wrangler & Grand Cherokee - 4.0L I-6 Engine



Tuning	Horsepower		Torque	
	Maximum	Gain	Maximum	Gain
Hypertech Tuning for Premium Fuel	160 HP @ 4530 RPM	+15 HP @ 5170 RPM	207 Ft-Lbs @ 2790 RPM	+24 Ft-Lbs @ 1220 RPM
Hypertech Tuning for Regular Fuel	157 HP @ 4860 RPM	+14 HP @ 5170 RPM	200 Ft-Lbs @ 2780 RPM	+15 Ft-Lbs @ 5170 RPM
Factory Stock Tuning	153 HP @ 4710 RPM	—	190 Ft-Lbs @ 2950 RPM	—

RPM	Horsepower			
	Factory HP	Hypertech Regular Fuel HP (Gain)	Hypertech Premium Fuel HP (Gain)	
1250	41	43 (+2)	47 (+6)	
1500	126	131 (+5)	137 (+11)	
1750	57	60 (+3)	64 (+7)	
2000	67	69 (+2)	74 (+7)	
2250	78	82 (+4)	87 (+9)	
2500	89	94 (+5)	98 (+9)	
2750	99	104 (+5)	108 (+9)	
3000	108	113 (+5)	118 (+10)	
3250	117	123 (+6)	128 (+11)	
3500	126	131 (+5)	137 (+11)	
3750	133	139 (+6)	146 (+13)	
4000	141	146 (+5)	154 (+13)	
4250	147	152 (+5)	159 (+12)	
4500	150	157 (+7)	160 (+10)	
4750	152	155 (+3)	158 (+6)	
5000	143	154 (+11)	154 (+11)	

RPM	Torque			
	Factory Torque	Hypertech Regular Fuel Torque (Gain)	Hypertech Premium Fuel Torque (Gain)	
1250	172	180 (+8)	196 (+24)	
1500	188	197 (+9)	206 (+18)	
1750	170	180 (+10)	192 (+22)	
2000	176	180 (+4)	193 (+17)	
2250	182	191 (+9)	202 (+20)	
2500	188	199 (+11)	206 (+18)	
2750	189	200 (+11)	206 (+17)	
3000	189	198 (+9)	206 (+17)	
3250	189	199 (+10)	206 (+17)	
3500	188	197 (+9)	206 (+18)	
3750	187	195 (+8)	205 (+18)	
4000	186	191 (+5)	202 (+16)	
4250	182	188 (+6)	196 (+14)	
4500	175	183 (+8)	187 (+12)	
4750	169	170 (+1)	175 (+6)	
5000	150	162 (+12)	162 (+12)	

### Tuning Features

- Contains Two Performance Tunes for Regular and Premium Fuel
- Adjustable Engine RPM Rev Limiter
- Reads, Displays, and Clears Diagnostic Trouble Codes (DTC's)
- Adjustable Top Speed Limiter to Match Speed Rated Tires



Vehicle Tested: 2004 JEEP Wrangler X  
 Engine: 4.0L  
 Transmission: AX15 - 5-speed  
 Gear Ratio: 3.73:1  
 Tire Size: 33x12.5R15  
 Test Date: 3/30/2004

Hypertech Part Number:  
 Max Energy

**52500**