

These installation instructions show an example installation on a 2019 GM 1500 new style truck. The installation may vary for your vehicle, so it may be necessary to consult a GM service manual for specific instructions for your year model.

In-Line Speedometer Calibrator Module Software Setup Instructions

1. UPDATE

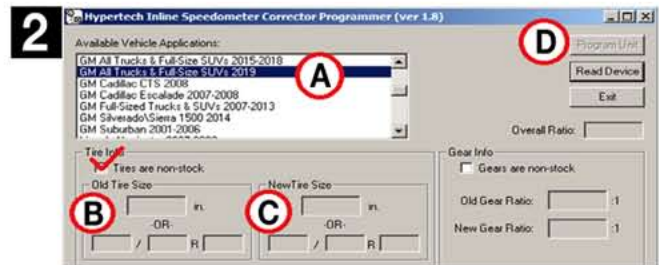
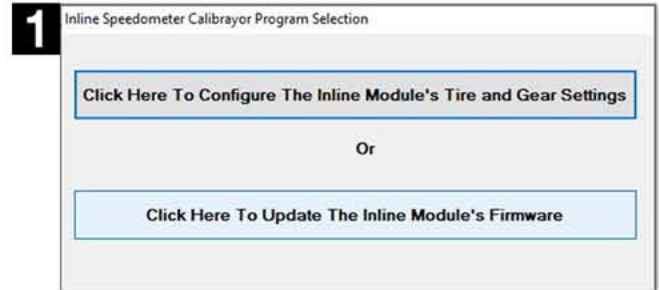
This step makes sure that the In-Line Speedometer Calibrator Module has the latest firmware installed. If the Tuner Update Software is not already installed on your PC, go to our website (hypertech.com) and download the Tuner Update Software. Connect the In-Line Speedometer Calibrator Module to your PC with the supplied USB cable, run the update software and click the Update Tuner button.

2. CONFIGURE

For accurate readings, measure the stock and new tire height from the ground to the top of the tire. Enter these measurements (in inches) into the configuration software, and click program to commit these settings. Once configuration is complete, take the In-Line Speedometer Calibrator Module and harness to the vehicle.

3. CONNECT

Securely connect the In-Line Speedometer Calibrator Module to the In-Line Speedometer Calibrator harness.



In-Line Speedometer Calibrator Module Vehicle Installation Instructions

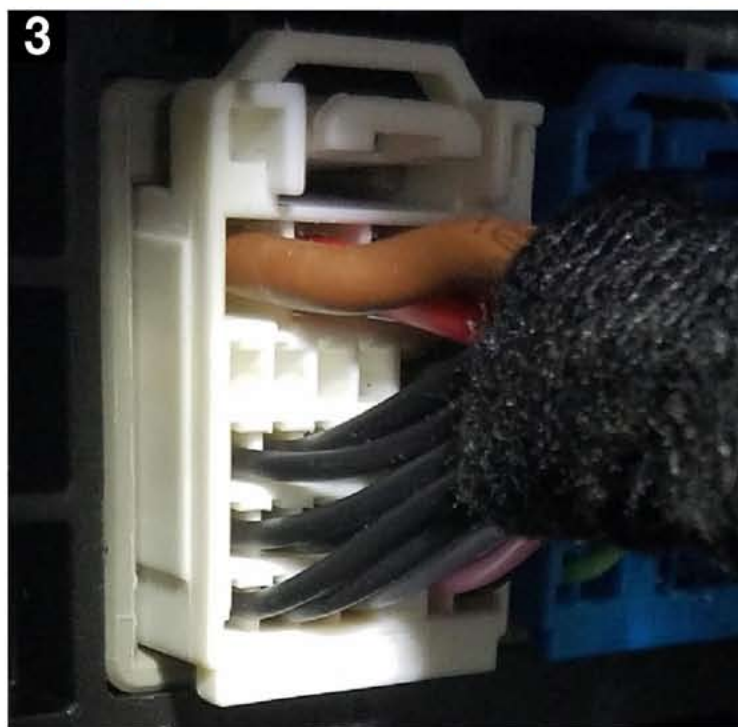
- POWER OFF** the vehicle for ten (10) minutes with the ignition key out of proximity of the vehicle to ensure the HSCAN bus powers down completely.



2. Looking up under the driver's side dash, near the brake pedal, you will see a module with seven (7) color coded connectors. Remove the 1st White connector closest to you.



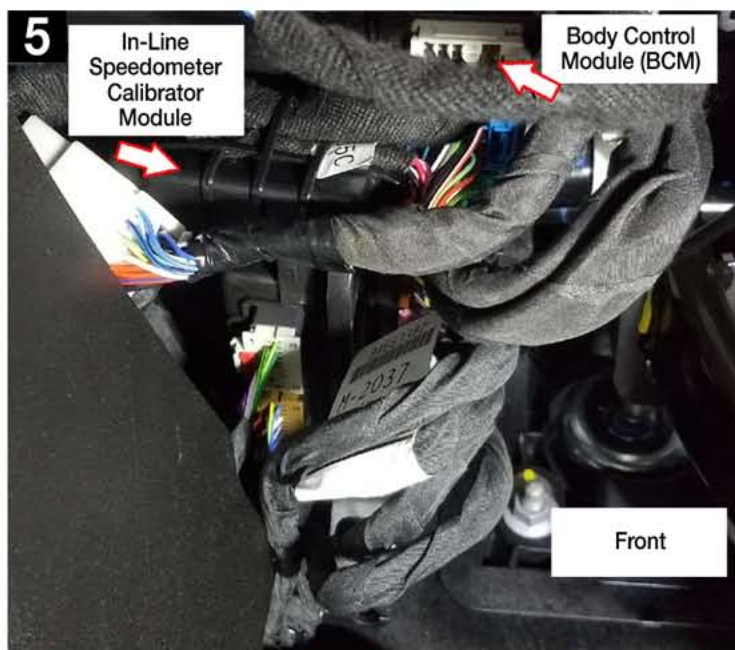
3. Plug the female end of the In-Line Speedometer Calibrator Module harness into the white plug of the Body Control Module (BCM). Ensure the connector is fully seated and locked into place.



4. Plug the male end of the In-Line Speedometer Calibrator Module harness into the factory harness which was unplugged from the BCM. Ensure the connector is fully seated and locked into place.



5. Install the In-Line Speedometer Calibrator Module under the driver's side dash, near the brake pedal. Secure the In-Line Speedometer Calibrator Module in place and tuck it up out of the way of movement in the foot well as shown.



6. Start the vehicle and check for any warning signs or messages. Test drive the vehicle to ensure proper speedometer function. Your installation is now complete!

These installation instructions show an example installation on a 2020 Chevrolet Colorado. The installation may vary for your vehicle, so it may be necessary to consult a GM service manual for specific instructions for your year model.

Tools needed: 7mm nut driver or socket

In-Line Speedometer Calibrator Module Software Setup Instructions

1. UPDATE

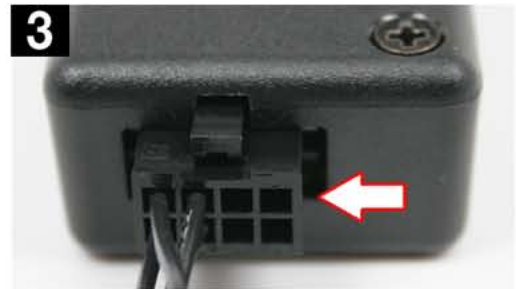
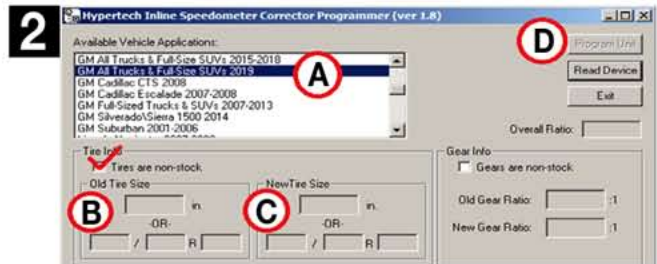
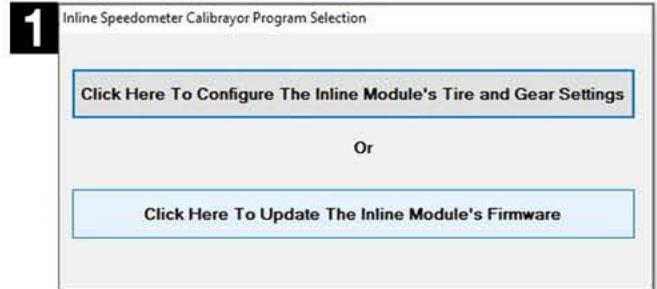
This step makes sure that the In-Line Speedometer Calibrator Module has the latest firmware installed. If the Tuner Update Software is not already installed on your PC, go to our website (hypertech.com) and download the Tuner Update Software. Connect the In-Line Speedometer Calibrator Module to your PC with the supplied USB cable, run the update software and click the Update Tuner button.

2. CONFIGURE

For accurate readings, measure the stock and new tire height from the ground to the top of the tire. Enter these measurements (in inches) into the configuration software, and click program to commit these settings. Once configuration is complete, take the In-Line Speedometer Calibrator Module and harness to the vehicle.

3. CONNECT

Securely connect the In-Line Speedometer Calibrator Module to the In-Line Speedometer Calibrator harness.



In-Line Speedometer Calibrator Module Vehicle Installation Instructions

- POWER OFF** the vehicle for ten (10) minutes with the ignition key out of proximity of the vehicle to ensure the HSCAN bus powers down completely.



2. Press the emergency brake pedal down. Then with the 7mm socket, remove the two (2) screws at the bottom of the kickplate.



3. Pull the kickplate back toward the driver seat to release the clips holding it in place. On the back of the kickplate, unplug the connectors for the headlight and four wheel drive knobs (as equipped). **Be sure to lift the red lock on the plugs and press the release tab before removing.**



4. Locate the white connector plugged into the top slot on the BCM (Body Control Module). Press the release tab on the side of the connector and pull to release.



5. Plug the female connector of the In-Line Speedometer Calibrator Module harness into the BCM (Pic 5A). Then plug the male connector of the In-Line Speedometer Calibrator Module harness into the factory connector removed from the BCM in Step 4 (Pic 5B). **Make sure you hear the female connector click into place on the BCM.** This can require you to push the connector pretty hard into the BCM.



6. Start the vehicle and check for any warning signs or messages. If messages occur, turn off the vehicle and check the installation and/or call/email Hypertech Tech Support for assistance. If no messages occur, turn off the vehicle, push the In-Line Speedometer Calibrator module and harness into the dash, zip tie it in place, plug the knobs in removed in Step 3, and then re-attach the kickplate. Before re-installing the two (2) 7mm screws, test drive the vehicle to ensure proper speedometer function. Your installation is now complete!