



# Proudly Made In USA

## Installation Instructions:

JL Summit Air Dam Skid Plate  
With Fog Lights

Part Number: **600.100.160**

## Vehicle Fitment:

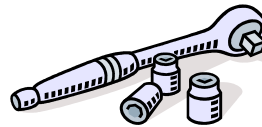
Fits JL Front Summit Bumpers

### Parts List

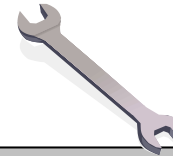
Qty:

- 1 JL Summit Air Dam Skid Plate
- 2 Mounting Brackets
- 6 3/8-16 x 1" Hex Bolts
- 6 3/8" Lock Washers
- 6 3/8" Flat Washers
- 2 3/8-16 Hex Nuts
- 8 8-32 x 1/2" Length Button Head Screw 316 Stainless Steel
- 12 Flat Washers Stainless Steel for Halogen Fog Lamp Installation
- 8 Butt Connectors with solder joint and adhesive heat shrink tubing

### Tools Needed



Ratchet  
9/16" Socket  
16mm Socket  
6" Extension



9/16" Wrench



3/32 Hex Wrench



Wire Cutters



Heat Gun  
(Recommended)

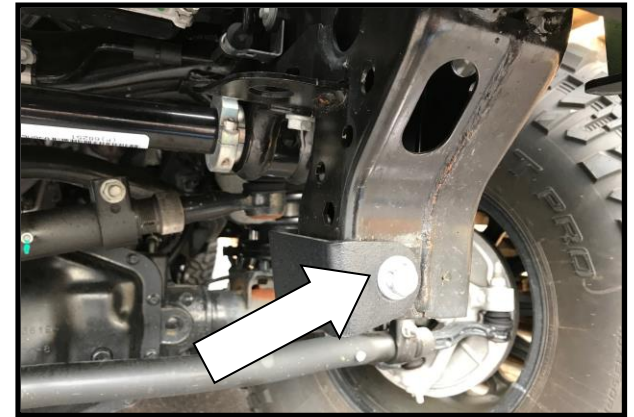
Congratulations on your purchase of the Hyline Offroad JL Summit Series Air Dam Skid Plate. Our products are completely manufactured in our facility located in Perkasie, PA. They are designed and engineered for durability and long product life. We sincerely thank you for your purchase and your support. We look forward to serving you in the future.

*Hyline Offroad Staff*

# PLEASE READ INSTRUCTIONS BEFORE BEGINNING INSTALLATION

## Air Dam Installation

- Step 1 – Before installing your Air Dam make sure there are no wires in your way. Air Dam must be installed after bumper is installed.
- Step 2 – Install factory fog lights into Hyline Air Dam. If you have stock LED fog lights that came out of a factory plastic bumper you can simply mount those lights into the Air Dam using the supplied 8-32 x 1/2" button head screws. If you have stock halogen fog lights you will need to first install them into the supplied mounting brackets, then fasten those brackets and lights into the air dam using the 8-32 x 1/2" button head screws. (See Supplemental Diagram on Page 3)
- Step 3 – Using the 16mm socket and the two factory bolts that were removed from the metal shroud during the front bumper removal process, install the supplied mounting brackets as shown in (Figure 1). If you had a metal bumper then you would not have had the two factory bolts. Instead you will use the two supplied 3/8-16 x 1" hex bolts, flat washers, lock washers and hex nuts to install the mounting brackets using the existing holes in each frame bracket. (See Figure 1)



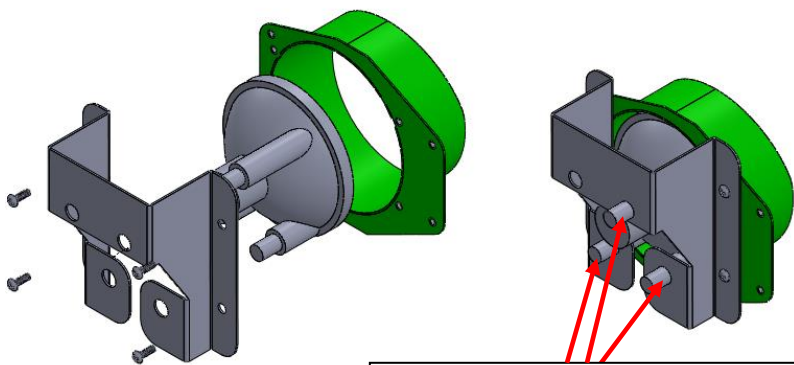
**Figure 2**

- Step 4 – Using the 9/16" socket with 6" extension, place the 3/8-16 x 1" bolt with lock washer and flat washer into the socket. While holding the Air Dam in place, thread the bolt (2x) through the slots and into the bumper weldnut. (See Figure 2)
- Step 5 – Using the 9/16" socket again, install the other two 3/8-16 x 1" hex bolts, lock washers, and flat washers from the backside of the air dam into the mounting bracket weldnuts.
- Step 6 – The fog lights are now located lower than original mounting location in the bumper so the wire harness will have to be extended. Use the supplied butt connectors and wire lengths to extend the wiring harness. Replug the lights in.

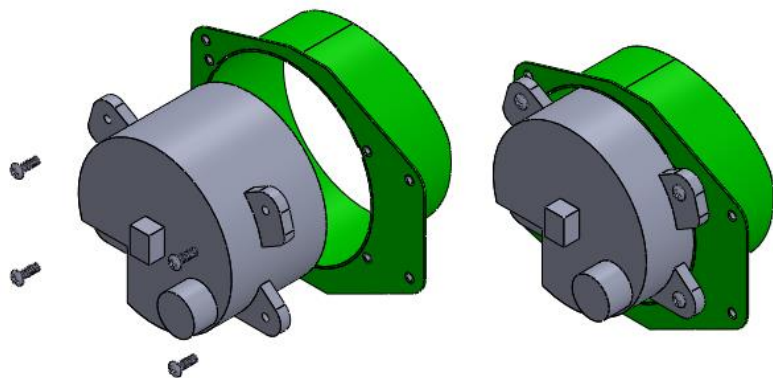
# Supplemental Fog Light Diagrams

## Sport, Sahara & Rubicon Models With Factory Plastic Bumpers

All brackets shown below are included with our bumper kits. The brackets are necessary to mount the OEM Halogen or LED Fog Lights into the Hyline Bumper or Air Dam Skid Plate. Both types of fog lights are found in the factory plastic bumpers. Use the 8-32 button head screws to assemble fog lights to bumper light housing.



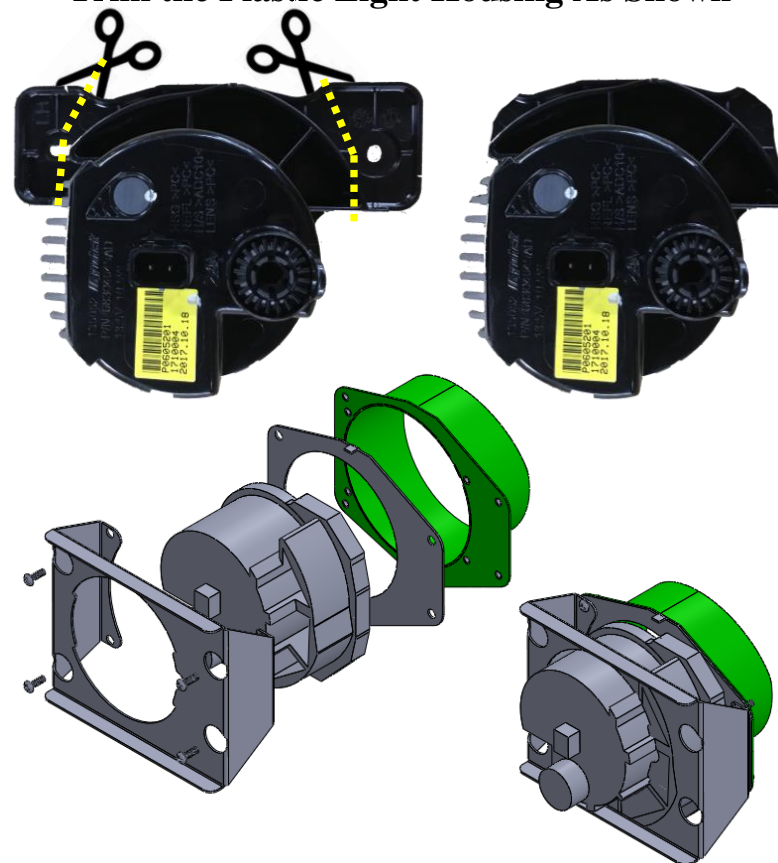
PUSH ON TWO FLAT WASHERS  
ONTO EACH PLASTIC CAP



## Rubicon Steel Factory Bumpers

If you are using LED Fog Lights that were removed from a factory metal bumper, then you will need to purchase Hyline Offroad part number 600.100.170. This bracket set will allow you to mount this type of LED Fog Light into your new Hyline Bumper or Air Dam Skid Plate.

**Trim the Plastic Light Housing As Shown**



Discover other off-road bumpers on our website.