



Proudly Made In USA

Installation Instructions:

JL Summit Modular Front Bumper
Part Number(s): 600.100.100

Vehicle Fitment:

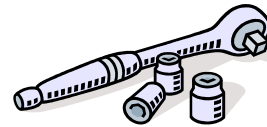
2018 - Present Jeep Wrangler
& Unlimited

Parts List

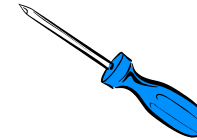
Qty:

- 1 Summit Front Bumper
- 1 Winch Fairlead Plate
- 2 Reinforcement Brackets
- 2 Halogen Fog Light Mounts
- 8 7/16"-20 Grade 8 Steel Hex Nut
- 8 7/16" Grade 8 Flat Washer
- 8 7/16" Grade 8 Split Lock Washer
- 2 3/8"-16 x 1" Length Hex Head Bolt
- 2 3/8" Flat Washer
- 2 3/8" Split Lock Washer
- 8 8-32 x 1/2" Length Button Head Screw 316 Stainless Steel
- 2 1/4"-20 x 1/2" Length Button Head Screw 316 Stainless Steel
- 12 Flat Washers Stainless Steel for Halogen Fog Lamp Installation

Tools Needed



Ratchet
7mm Socket
8mm Socket
16mm Socket
18mm Deep Socket
6" Extension
11/16" Deep Socket
9/16" Socket



Panel Fastener
Tool or Flat Blade
Screwdriver



3/32 Hex Wrench
5/32 Hex Wrench

Congratulations on your purchase of the Hyline Offroad JL Summit Series Front Bumper. Our products are completely manufactured in our facility located in Perkasio, PA. They are designed and engineered for durability and long product life. We sincerely thank you for your purchase and your support. We look forward to serving you in the future.

Hyline Offroad Staff

PLEASE READ INSTRUCTIONS BEFORE BEGINNING INSTALLATION

Stock Front Bumper Removal

If Applicable

Disconnect all Stock & Aftermarket External Lighting Wiring that is presently attached to existing bumper.

Figure 1



Step 1 – Using the panel fastener removal tool or flat screwdriver, remove the plastic factory frame rail cover by popping out the two panel fasteners from the top side. On plastic factory bumpers you will need to remove 8 more panel fasteners that connect the cover to the bumper. You will *NOT* be reusing this cover or panel fasteners. (See Figure 1)

Step 2 – Using the panel fastener removal tool, remove the factory air dam by popping out the 8 panel fasteners (See Figure 2). Then using an 8mm socket remove the two screws on the bottom of the air dam. (See Figure 3) You will *NOT* be reusing this air dam, hardware or panel fasteners.

Step 3 – Using 16mm socket remove the two bolts holding the metal shroud. Keep these two bolts if installing our air dam skid plate.



Figure 3



Figure 2

Step 4 – Using 18mm deep socket remove the eight hex nuts from backside of bumper. The nuts are located on the inside and outside of frame rails. Once all nuts are removed the bumper should be free to remove from the Jeep.
(See Figure 4 - Outside frame rails shown)

Step 5 – Using 16mm socket remove the bolt from each of the two brackets attached to the inside and outside of each frame rail. Retain these two bolts as they will be used later in Step 9
(See Figure 4)



Figure 4

Step 6 – If applicable, Unscrew Factory Fog Lights at this point using a 7mm socket. (4 on each light)

Installation of Hyline Offroad Bumper

Step 7 – Install factory fog lights into Hyline Front Bumper. If you have stock LED fog lights that came out of a factory plastic bumper you can simply mount those lights into the Hyline bumper using the supplied 8-32 x 1/2” button head screws. If you have stock halogen fog lights you will need to first install them into the supplied mounting brackets, then fasten those brackets and lights into the bumper using the 8-32 x 1/2” button head screws. (See Supplemental Diagram on Page 5)

*****NOTE***** If you have factory LED Fog Lights that were removed from a *FACTORY STEEL BUMPER*, then a special bracket kit must be purchased separately in order to mount the lights into our bumper. The part number for that bracket kit is Hyline Offroad P/n 600.100.170

Step 8 – With the fog lights installed, you can now simply slide the Hyline front bumper onto the Jeep by placing the weld studs through the frame horns. Use supplied 7/16-20 Grade 8 Nuts, Lock Washers and Flat Washers to assemble bumper to frame. Tighten All Nuts.

Step 9 – Using the 9/16” socket install the supplied Reinforcement Brackets (one on each side) with the supplied 3/8-16 x 1” Grade 8 Bolts, Lock Washers & Flat Washers. Then using the 16mm socket fasten the two bolts that were removed in Step 5. These brackets are added to strengthen the connection between the bumper and frame during heavy winching activity.
(See Supplemental Diagram Page 6 for assembly view)

Step 10 – Plug in factory fog lights again and secure all wiring. Make sure all hardware has been tightened properly.

Optional Winch Installation

Step 1 – Fasten the fairlead supplied with winch to the Fairlead Plate supplied with the bumper & tighten.

Step 2 – Mount Winch and Fairlead Plate onto the bumper using supplied hardware with winch.

Step 3 – Tighten all winch bolts to manufacturers torque specifications.



Attention

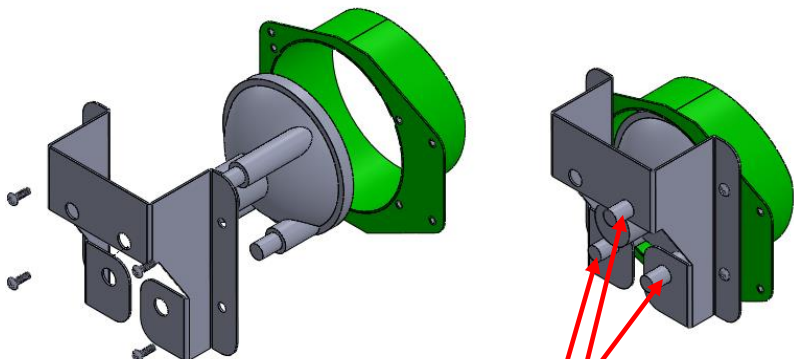
Installation instructions provided must be read and followed exactly when installing product. Failure to do so could potentially result in injury or death of any occupants in the vehicle. **WEAR SEAT BELTS AT ALL TIMES WHEN DRIVING!**

Though our products are rugged, they are primarily designed and built to enhance the appearance of the vehicle and will not protect from death or injury in the event of an accident. Adhere to all vehicle manufacturers specifications.

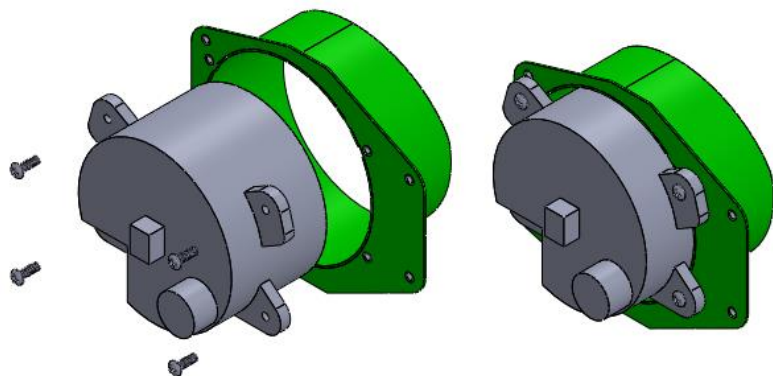
Supplemental Fog Light Diagrams

Sport, Sahara & Rubicon Models With Factory Plastic Bumpers

All brackets shown below are included with our bumper kits. The brackets are necessary to mount the OEM Halogen or LED Fog Lights into the Hyline Bumper or Air Dam Skid Plate. Both types of fog lights are found in the factory plastic bumpers. Use the 8-32 button head screws to assemble fog lights to bumper light housing.



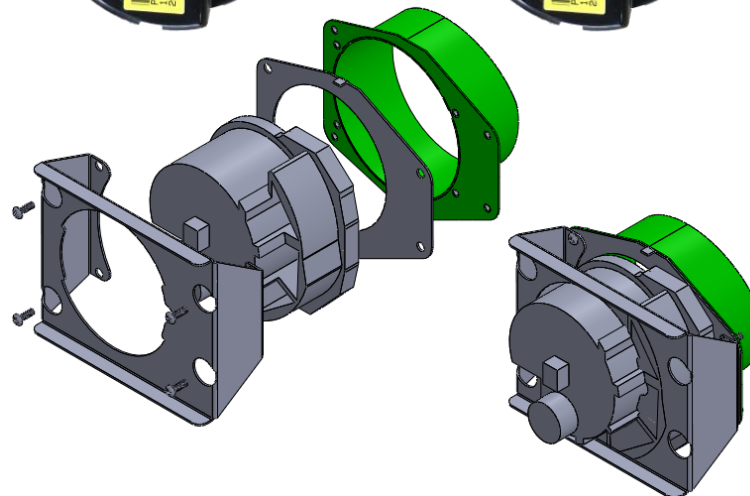
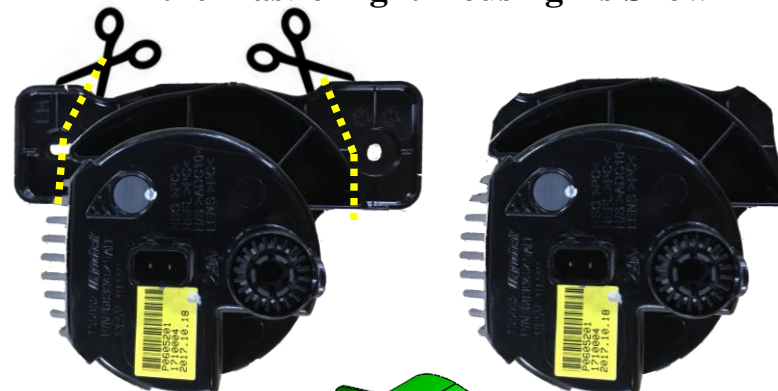
PUSH ON TWO FLAT WASHERS
ONTO EACH PLASTIC CAP



Rubicon Steel Factory Bumpers

If you are using LED Fog Lights that were removed from a factory metal bumper, then you will need to purchase Hyline Offroad part number 600.100.170. This bracket set will allow you to mount this type of LED Fog Light into your new Hyline Bumper or Air Dam Skid Plate.

Trim the Plastic Light Housing As Shown



Supplemental Winch Reinforcement Bracket Diagram

