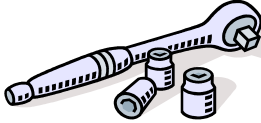






Proudly Made In USA

Installation Instructions:
 JK Tube Step Rocker Panel
 Part Number: **400.300.110**

Vehicle Fitment:
 2007-Present Jeep Wrangler
 2-Door Only

Parts List	Tools Needed		
<p>Qty:</p> <ul style="list-style-type: none"> 1 Driver Rock Slider – RED Dot 1 Passenger Rock Slider – GREEN Dot 1 Driver Drill Template – RED Dot 1 Passenger Drill Template – GREEN Dot 8 3/8-16 Gr 5 Hex Nuts 8 3/8" USS Flat Washers Gr 5 8 3/8" Split Lock Washers Gr 5 4 3/8-16 Threaded U-Bolts 4 Square Plastic End Caps 8 3/8" Retaining Rings 	 <div data-bbox="928 669 1213 899"> <p>Ratchet & Sockets 5/8", 9/16" 18mm & 19mm</p> </div>	 <div data-bbox="1241 669 1570 899"> <p>Drill 3/16" & 1/2" Multi-Depth or Step Drill Bit Recommended</p> </div>	 <div data-bbox="1598 669 1885 899"> <p>Safety Glasses</p> </div>

Congratulations on your purchase of the Hyline Offroad Rock Sliders. All of our products are completely manufactured in our facility located in Perkasio, PA. They are designed and engineered by Offroad enthusiasts just like you to be rock solid. Hyline Offroad would like to thank you for your recent purchase and look forward to serving you in the future.

Hyline Offroad Staff

1. Remove any stock rock rails or factory tube steps from vehicle if equipped.

Note: You will also need to remove the factory Rubicon Rails if vehicle is equipped with them.

Passenger Side Installation:

2. Remove the two existing bolts from underside of frame rail. This should drop the skid plate cross members just enough to slide the Passenger Side steel drill template in place. The Passenger Side Template will have a GREEN Dot located on it.
3. Insert the Passenger Side steel drill template between skid plates and the frame rail. Reinstall the two existing bolts and tighten. (Figure 1)

4. You can now drill the 4 holes in the side of the frame through the template using a 3/16" Drill Bit. Using a smaller drill bit will help with accuracy before drilling the final size 1/2" hole size.
5. After all 4 holes are pre-drilled you can remove the template. Then redrill all 4 holes open to 1/2". A Multi-Depth or Step Drill Bit is nicer for this operation because it's shorter and will cut through the metal quicker and easier.



Figure 1, Template Shown is For 2 Door

6. Before you install the Rock Slider onto your Jeep you may need to loosen more of the bolts on the gas tank skid plate and transmission skid plate in order to fit the Rock Slider Brackets in between the skid plate cross members and frame rail. You'll need at least a 1/4" gap or more to make fitting in the Rock Slider Brackets much easier.

7. Now install the supplied 3/8-16 Threaded U-Bolts by inserting one end first, then feeding and turning the U-Bolt until you fish it out the other hole. Do this before installing the Rock Sliders. Press on the provided Retaining Rings immediately after the U-Bolt is installed to prevent from slipping into frame. (Figure 2)

Helpful Tip When Installing the Retaining Rings: Once you have the U-Bolt in the frame, install a washer and nut on one side of the U-Bolt. This will hold U-Bolt in place and make placing the retainer ring on U-Bolt easier.

8. Now you're ready to install the Rock Slider (Much easier with two people). Slide the Rock Slider Brackets between the skid plate mounts and frame rail and install the two original bolts into the bottom. DO NOT TIGHTEN YET.
9. Fasten the 3/8-16 Hex Nuts onto U-Bolts with flat washers and lock washers. Do Not Overtighten These Nuts.
10. Tighten two bolts on the bottom of the frame.
11. The installation of the Passenger Side Rock Slider is now complete.

Driver Side Installation:

12. Remove the existing bolts from under frame rail, similar to passenger side.
13. Insert the Driver Side steel drill template (RED Dot) between skid plate cross member and the frame rail. Re-install the two bolts you previously removed to fasten template tight to frame.
14. Repeat and follow steps 4-10 for installation on the Driver Side.
15. Install Black Plastic Tube Caps in each end of Rock Slider tube.
16. You're installation is now complete.

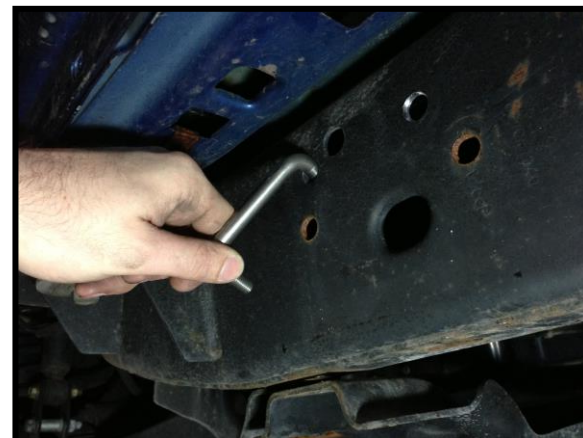


Figure 2, Install U-Bolt by inserting one leg first as shown.



Figure 3 – U-Bolts Installed & Fastened