



***Proudly Made In USA***

**Installation Instructions:**

JK Rear Bumper

Part Numbers:

**400.200.110 & 400.200.120**

**400.200.180 & 400.200.190**

**400.200.140**

**Vehicle Fitment:**

2007-2018 Jeep JK

Wrangler & Unlimited

**Parts List**

Qty:

- 1 Rear Bumper
- 2 Inner Frame Mounting Brackets
- 4 1/2-13 Gr8 Hex Bolts
- 4 1/2" Gr8 Flat Washers
- 4 1/2" Gr8 Lock Washers

**Tools Needed**



- Ratchet
- 16mm Socket
- 18mm Socket
- 3/4" Socket
- Torque Wrench

Congratulations on your purchase of the Hyline Offroad Standard Rear Bumper. Our Bumpers are completely manufactured in our facility located in Perkasio, PA. They are designed and engineered by Offroad enthusiasts just like you to be rock solid at an affordable price. Hyline Offroad would like to thank you for your recent purchase and look forward to serving you in the future.

**Hyline Offroad Staff**

# PLEASE READ INSTRUCTIONS BEFORE BEGINNING INSTALLATION

## Remove Stock Rear Bumper

Step 1 – Unbolt the four bolts (2 on each side) on both sides of stock bumper mounting brackets using the 16mm socket. They are located on the outside of the Jeep's frame. Save these 4 bolts, as they will be reused during installation of your Hyline Bumper.

(See Figure 1, Passenger Side Shown)

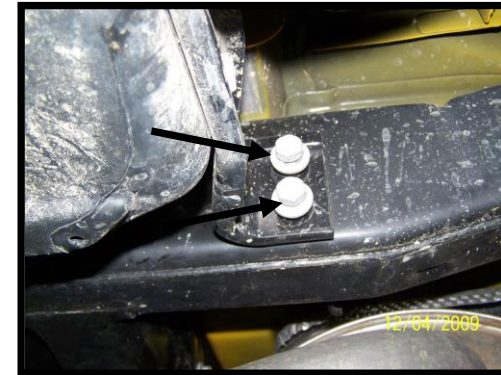


Figure 1

Step 2 – Next, unbolt the two bolts (1 on each side) located on the inside of the rear cross member using the 16mm socket.

(See Figure 2)

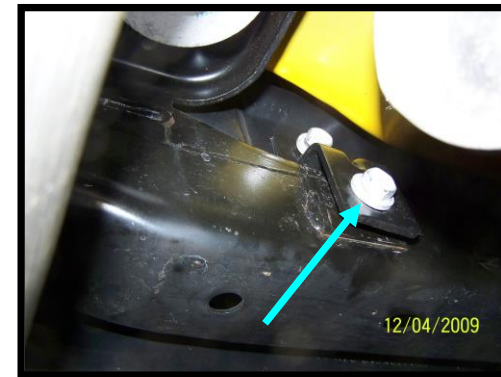


Figure 2

Step 3 – Now the stock bumper is free to be removed from the Jeep.

Step 4 – If you have a stock tow hook Attachment you will need to remove that as well. Using the 18mm socket remove the three bolts that attach the tow hook. (See Figure 3)

If you have a hitch receiver you can leave that attached.

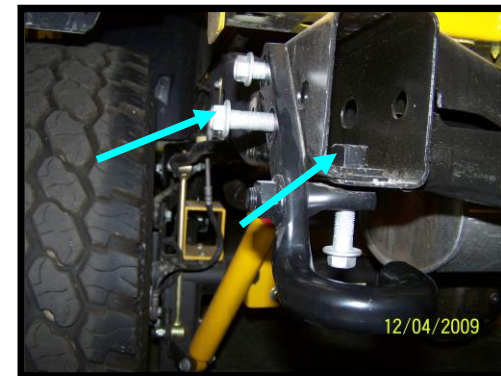


Figure 3

## Install Hyline Offroad Rear Bumper

Step 5 – Slide the Inner Frame Mounting Brackets inside each frame rail. Position the bracket so that the weld nuts are centered with the large slotted holes in the side frame.

(See Figure 4)

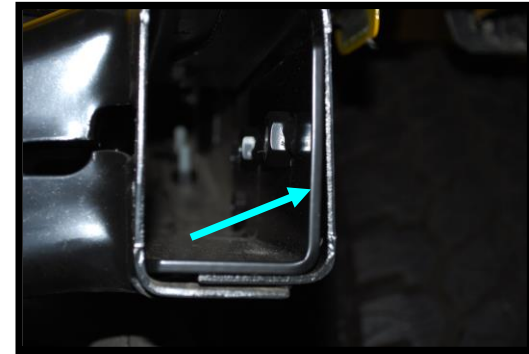
**NOTE... If you have a style bumper that includes light cutouts and are adding cube lights you will need to add them before installing the bumper onto the vehicle. Use supplied washers as needed if necessary to shim lights up.**

Step 6 – Now you're ready to slide the Hyline Rear Bumper in place. Guide the bumper mounting brackets that are welded onto the bumper over top of the frame rails. Push the bumper onto the Jeep until the holes in the bumper mounting brackets are aligned with the holes in the frame.

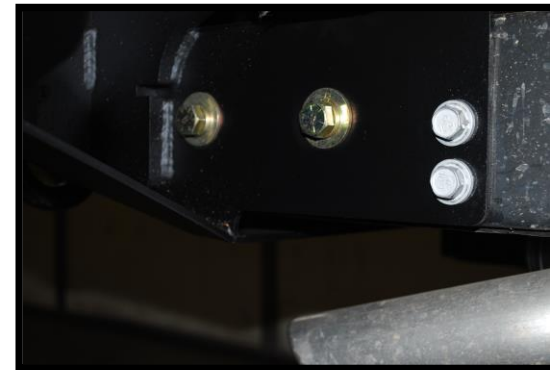
Step 7 – Using the supplied ½-13 Grade 8 Bolts, Lock Washers and Flat Washers along with the 4 metric bolts you took out in Step 1, thread each bolt into its respective hole. (See Figure 5)

Step 8 – Once all the bolts have been hand tightened you can now Tighten ½-13 Bolts with the ¾" socket (100 ft/lb) and other bolts with 16mm socket (50 ft/lb).

Step 9 – After about 50-100 miles of driving re-check all bolts and torque to proper settings.



**Figure 4**



**Figure 5**

**! Attention** Installation instructions provided must be read and followed exactly when installing product. Failure to do so could potentially result in injury or death of any occupants in the vehicle. **WEAR SEAT BELTS AT ALL TIMES WHEN DRIVING!**

Though our products are rugged, they are primarily designed and built to enhance the appearance of the vehicle and will not protect from death or injury in the event of an accident. Adhere to all vehicle manufacturers specifications.