



Proudly Made In USA

Installation Instructions:

TJ Hood Louver Panel
Part Number: **300.500.100-130**

Vehicle Fitment:

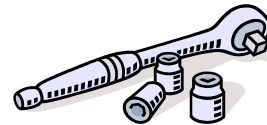
1997-2006 Jeep
Wrangler and
Wrangler Unlimited

Parts List

Qty:

- 1 Hood Louver Panel
- 1 Steel Template
- 32 Nylon Locknuts
- 2 10-32 Pan Head Screws

Tools Needed



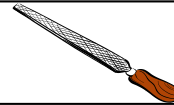
Ratchet
3/8" Socket
Torx



Drill
1/16" & 1/4"
Bit



Jig Saw OR
Cut Off Wheel



File OR
Sandpaper



Safety Glasses

Congratulations on your purchase of the Hyline Offroad Hood Louver Panel. All of our products are completely manufactured in our facility located in Perkasio, PA. They are designed and engineered by Offroad enthusiasts just like you to be rock solid at an affordable price. Hyline Offroad would like to thank you for your recent purchase and look forward to serving you in the future.

Hyline Offroad Staff

PLEASE READ INSTRUCTIONS BEFORE BEGINNING INSTALLATION

BEFORE INSTALLING

If you ordered the Hood Louver Panel raw you should paint, anodize, powder coat, etc. now before installation onto vehicle. **PEEL OFF THE VINYL PROTECTANT COVERING BEFORE PAINTING OR FINISHING.** If Hood Louver Panel was ordered black powder coated your now ready to continue to step 1.

Hood Louver Panel Installation

Step 1 – **As a safety precaution - Remove the hood from your vehicle before drilling or cutting.**

First, remove the engine grounding strap, hood light, and/or windshield washer hose from hood. Then unbolt the 6 Torx bolts from the hood hinges. Hood should now be free to remove from vehicle.

Step 2 – Once the hood is removed, place the hood on a flat, solid work area. Then remove the two rubber windshield bumpers and the u-shape tie down bracket. The rubber bumpers are easily removed by pulling up and away from hood. Tie down bracket unbolts from under the hood.

Step 3 – Place steel template in the center of hood as seen in (Figure 1). Visually make sure the holes in the template are centered with the holes for the rubber windshield bumper, tie down bracket holes and windshield washer squirter.

Step 4 – Re-install the U-Shape tie down bracket and tighten nuts securely, as these will hold the template in place while drilling in Step 6.



Figure 1

Step 5 – Place masking tape on the hood around perimeter of template, if desired, to prevent excessive scratching.

NOTE: USE 1/16” BIT AS PILOT HOLE FOR 1/4” BIT TO BETTER ENSURE ACCURACY!

Step 6 – Using 1/4” Bit, drill one hole through the template and hood at either corner, as shown in (Figure 2). Install and tighten the supplied 10-32 screw and nut. Then drill a second hole in the opposite corner of Template and install and tighten supplied 10-32 screw and nut. This will ensure template stays in place while drilling and cutting.

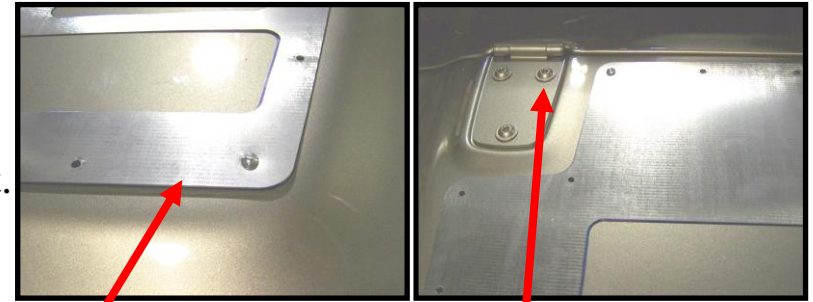


Figure 2

Drill & Install first 10-32 screw here.

Drill & Install second 10-32 screw here.

****Important** DO NOT MOVE TEMPLATE UNTIL STEP #9**

Step 7 – Continue to drill the rest of the holes with the 1/4” Bit, 32 Holes Total.
****NOTE**** You will need to use the 1” hole saw to expand the center bottom hole under the hood in the support section in order to attach the nut to stud. See (Figure 3)

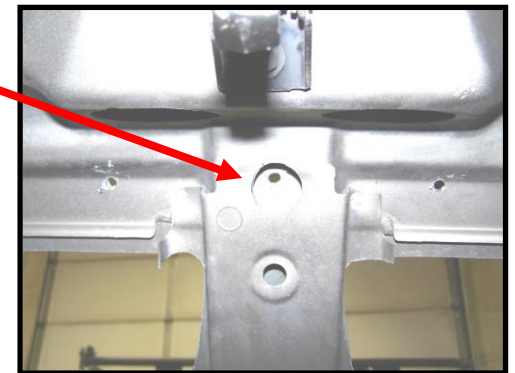


Figure 3

Step 8 – Once drilling is completed, Use 1” Hole saw and drill each corner of the 6 panels (24 times total). With template still in place, use jigsaw/cutoff wheel to cut out all 6 panels.

Step 9 – Remove template and use a file or sandpaper to deburr any sharp edges from panel cutouts and/or drilled holes. Remove masking tape also if necessary.

****MUST READ BEFORE MOVING TO STEP 10****

**Lubricate Nylock Nut Threads With WD-40 or Anti-Seize Prior To Installing.
DO NOT USE A PENETRANT & DO NOT OVERTIGHTEN NUTS.
Penetrant products are corrosive which will melt nylon locknut materials and
overtightening will cause distortion on Hood & Louver Panel.**

Step 10 – Install the Hood Louver Panel onto hood and assemble nylon locknuts to threaded studs.
Tighten nuts just enough until they touch the hood steel

Step 11 - Re-install hood onto vehicle and re-mount the two rubber windshield bumpers and u-shape tie down bracket. That’s it, you’re done.



Attention

Installation instructions provided must be read and followed exactly when installing product. Failure to do so could potentially result in injury or death of any occupants in the vehicle. **WEAR SEAT BELTS AT ALL TIMES WHEN DRIVING!**

Though our products are rugged, they are primarily designed and built to enhance the appearance of the vehicle and will not protect from death or injury in the event of an accident. Adhere to all vehicle manufacturers specifications.