

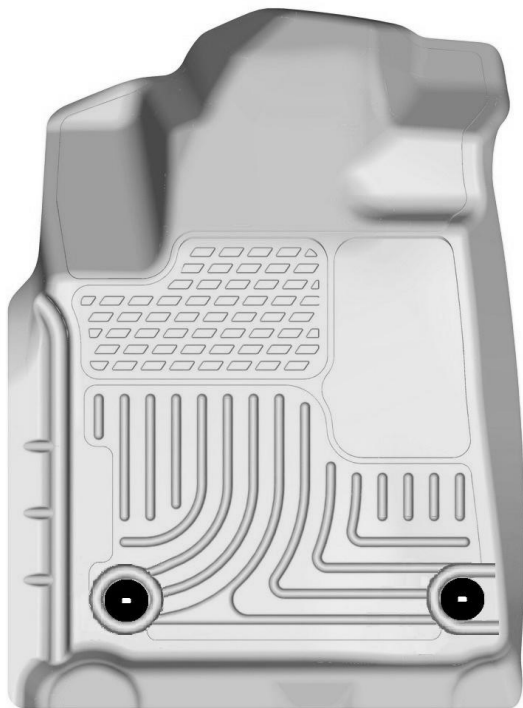
HUSKY **WeatherBEATER™** **Custom Vehicle Floor Protection**

CARE AND USE INSTRUCTIONS

Thank you for selecting a WeatherBeater® Floor Liner from Winfield Consumer Products. Your new front floor liners are custom molded to fit your Toyota Tundra CrewMax truck. The liners are made to take the place of your factory floor mats. **For correct fit, it is necessary to remove the factory floor mats before installing your new floor liners.** However, do not remove the factory-installed carpeting.

Your liners are made from an engineering resin that is lightweight and extremely tough and durable. The easiest way to clean your liners is with a damp cloth or sponge. If using a cleaner, 409® or Glass Plus® work well. Use of Armor All®, Son-of-a-Gun® or similar items is discouraged as these products make the liners slick.

INSTALLATION INSTRUCTIONS FOR YOUR TOYOTA TUNDRA CREWMAX FRONT FLOOR LINERS



LEFT OR DRIVER'S

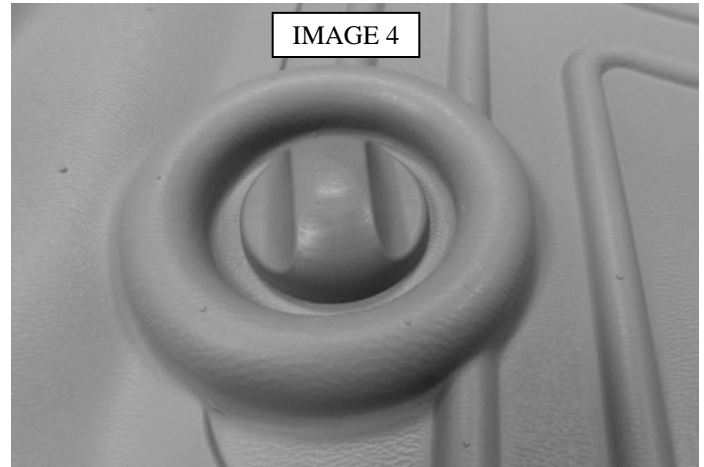
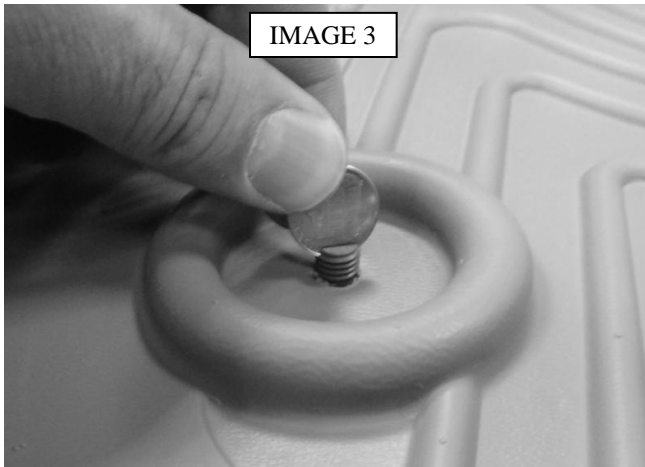
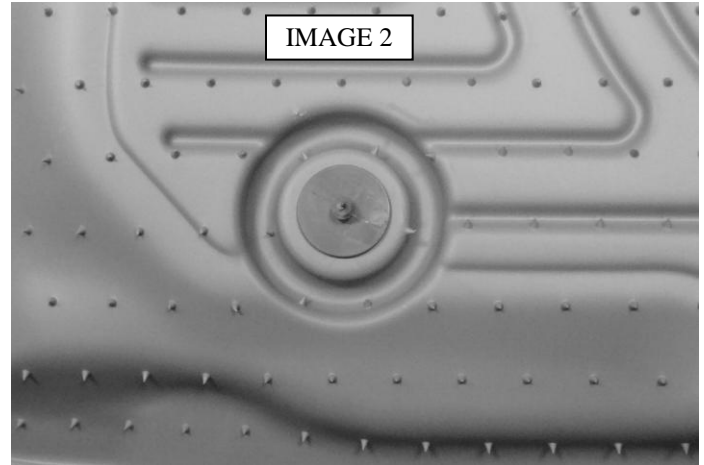
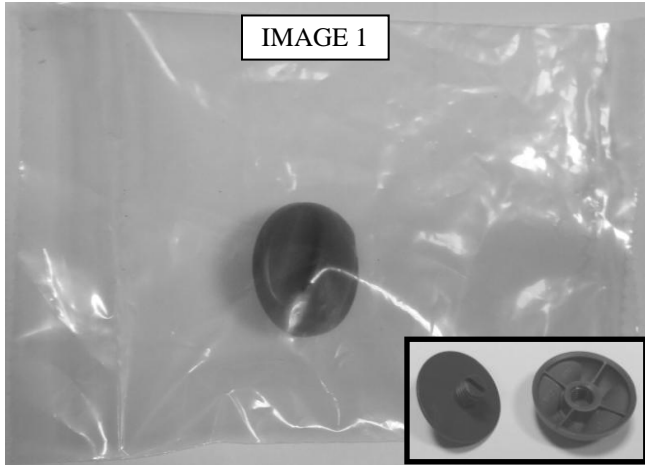


RIGHT OR PASSENGER'S SIDE

BEFORE INSTALLING YOUR LINERS REMOVE ANY OTHER FLOOR MATS FROM THE VEHICLE.

BEGIN INSTALLATION BY MOVING YOUR FRONT SEATS TO THEIR MOST REARWARD POSITION. WITH THIS DONE INSTALL THE DRIVER' SIDE LINER ATTACHING IT TO THE FACTORY TWIST LOCK FASTENERS.

IN YOUR PACKAGING YOU WILL FIND A COMPONENT BAG WITH A FASTENER THAT WILL BE USED TO SECURE THE PASSENGER SIDE LINER IN PLACE. LOCATE THE FASTENER IN YOUR PACKAGING, REMOVE THE FASTENER AND UNSCREW THE CAP FROM THE BASE (SEE IMAGE 1 BELOW). NEXT INSERT THE THREADED PORTION OF THE BASE INTO THE HOLE IN THE PASSENGER SIDE LINER, INSERTING IT FROM THE BACK SIDE OF THE LINER (SEE IMAGE 2 BELOW). WITH THIS DONE INSTALL THE LINER IN THE VEHICLE AND, USING A COIN, SCREWDRIVER OR SIMILAR, SCREW THE BASE OF THE FASTENER INTO THE CARPETING (SEE IMAGE 3). LASTLY, AS SHOWN IN IMAGE 4, INSTALL THE CAP ONTO THE BASE. TIGHTEN UNTIL THE CAP MEETS RESISTANCE, DO NOT OVER TIGHTEN.



HUSKY **WeatherBEATER™** **Custom Vehicle Floor Protection**

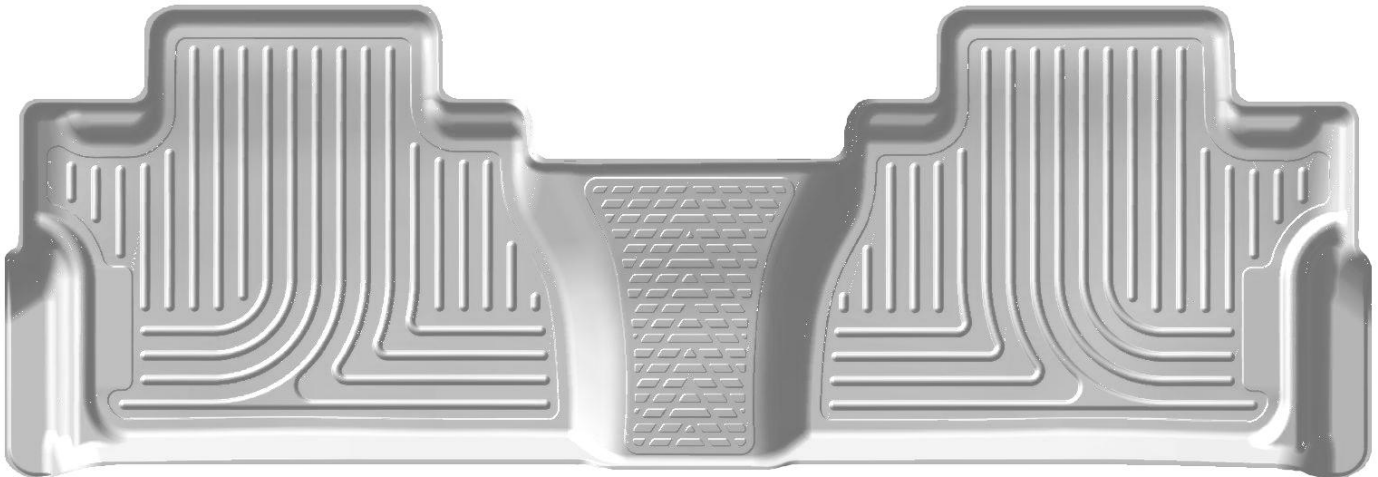
CARE AND USE INSTRUCTIONS

Thank you for selecting a WeatherBeater® Floor Liner from Winfield Consumer Products. Your new rear floor liner is custom molded to fit your Toyota Tundra CrewMax trucks. The liner is made to take the place of your factory floor mats. **For correct fit, it is necessary to remove the factory floor mats before installing your new floor liners.** However, do not remove the factory-installed carpeting.

Your liner is made from an engineering resin that is lightweight and extremely tough and durable. The easiest way to clean your liner is with a damp cloth or sponge. If using a cleaner, 409® or Glass Plus® work well. Use of Armor All®, Son-of-a-Gun® or similar items is discouraged as these products make the liner slick.

INSTALLATION INSTRUCTIONS FOR YOUR TOYOTA TUNDRA CREWMAX SECOND SEAT FLOOR LINER

FRONT OF VEHICLE



TO EASE INSTALLATION OF YOUR TUNDRA SECOND SEAT LINER, MOVE THE FRONT SEATS TO THEIR MOST FORWARD POSITIONS AND FOLD UP THE SECOND ROW SEATS. WITH THIS DONE, INSERT THE LINER IN VEHICLE ANGLING THEM SO THAT THE FRONT EDGE OF THE LINER IS SEATED INTO PLACE FIRST, THEN, LOWERING THE REAR EDGE. ONCE THE LINER IS INSTALLED, REPOSITION THE FRONT SEATS AS DESIRED.