

# HUSKY WeatherBEATER™ Custom Vehicle Floor Protection

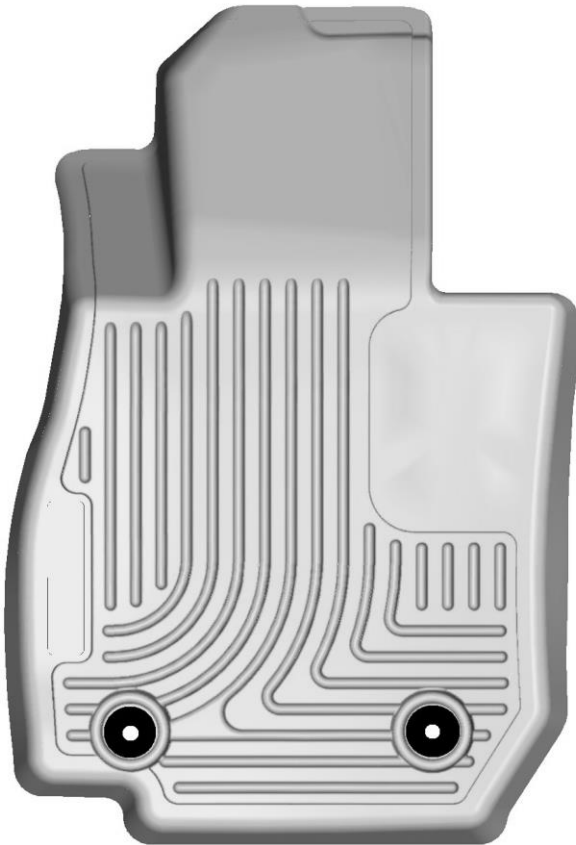
## CARE AND USE INSTRUCTIONS

---

Thank you for selecting a WeatherBeater™ Floor Liner from Winfield Consumer Products. Your new front floor liners are custom molded to fit your Mazda CX-3. The liners are made to take the place of your factory floor mats. **For correct fit, it is necessary to remove the factory floor mats before installing your new floor liners.** However, do not remove the factory-installed carpeting.

Your liners are made from an engineering resin that is lightweight and extremely tough and durable. The easiest way to clean your liners is with a damp cloth or sponge. If using a cleaner, 409® or Glass Plus® work well. Use of Armor All®, Son-of-a-Gun® or similar items is discouraged as these products make the liners slick.

## INSTALLATION INSTRUCTIONS FOR YOUR MAZDA CX-3 FRONT FLOOR LINERS



LEFT OR DRIVER'S SIDE



RIGHT OR PASSENGER'S SIDE

TO EASE INSTALLATION OF YOUR FRONT LINERS, MOVE BOTH FRONT SEATS TO THEIR MOST REARWARD POSITION. ONCE YOU HAVE INSTALLED YOUR LINERS, REPOSITION THE SEATS AS DESIRED. TAKE CARE THAT DRIVER'S SIDE LINER IS ATTACHED TO (SNAPPED OVER) THE FACTORY FLOOR MAT POSTS.

# **HUSKY** **WeatherBEATER™** **Custom Vehicle Floor Protection**

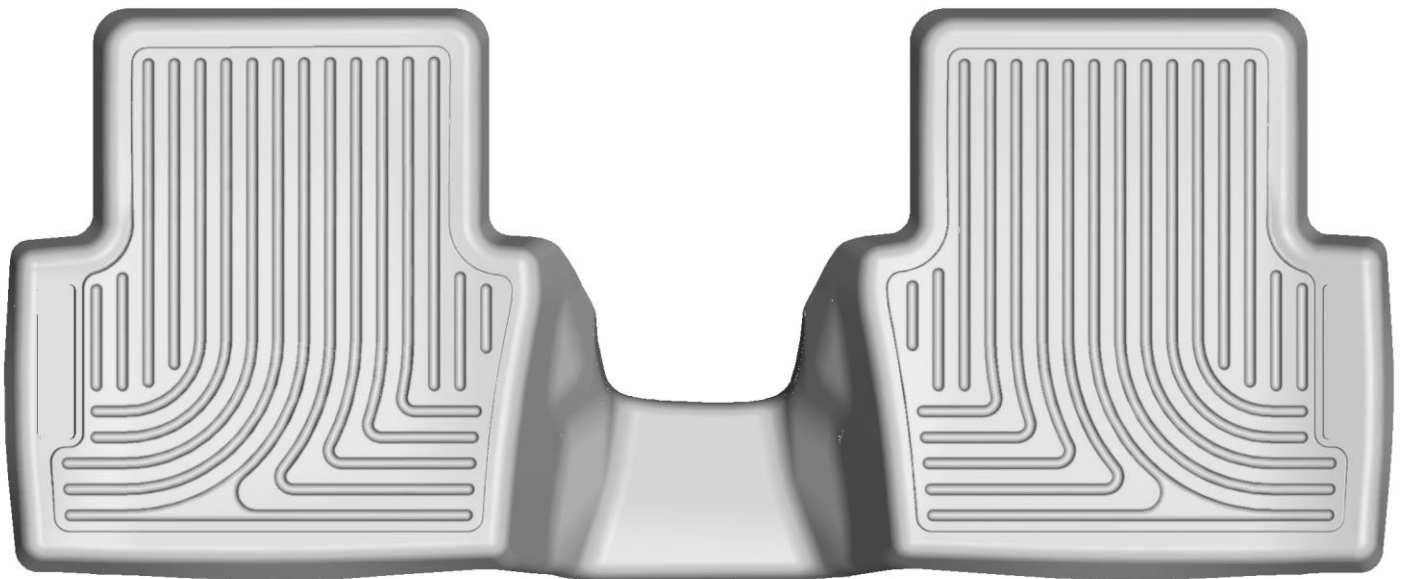
## CARE AND USE INSTRUCTIONS

---

Thank you for selecting a WeatherBeater™ Floor Liner from Winfield Consumer Products. Your new 2<sup>nd</sup> seat liner is custom molded to fit your Mazda CX-3. The liner is made to take the place of your factory floor mats. *For correct fit, it is necessary to remove the factory floor mats before installing your new floor liners.* However, do not remove the factory-installed carpeting.

Your liner is made from an engineering resin that is lightweight and extremely tough and durable. The easiest way to clean your liner is with a damp cloth or sponge. If using a cleaner, 409® or Glass Plus® work well. Use of Armor All®, Son-of-a-Gun® or similar items is discouraged as these products make the liner slick.

## INSTALLATION INSTRUCTIONS FOR YOUR MAZDA CX-3 2<sup>nd</sup> SEAT FLOOR LINER



TO EASE INSTALLATION OF YOUR 2<sup>ND</sup> SEAT LINER, FIRST MOVE THE FRONT ROW SEATS TO THEIR MOST FORWARD POSITIONS. ONCE THE LINER IS INSTALLED, YOU CAN REPOSITION THE FRONT ROW SEATS AS DESIRED.