



WEATHERBEATER® FLOOR LINERS

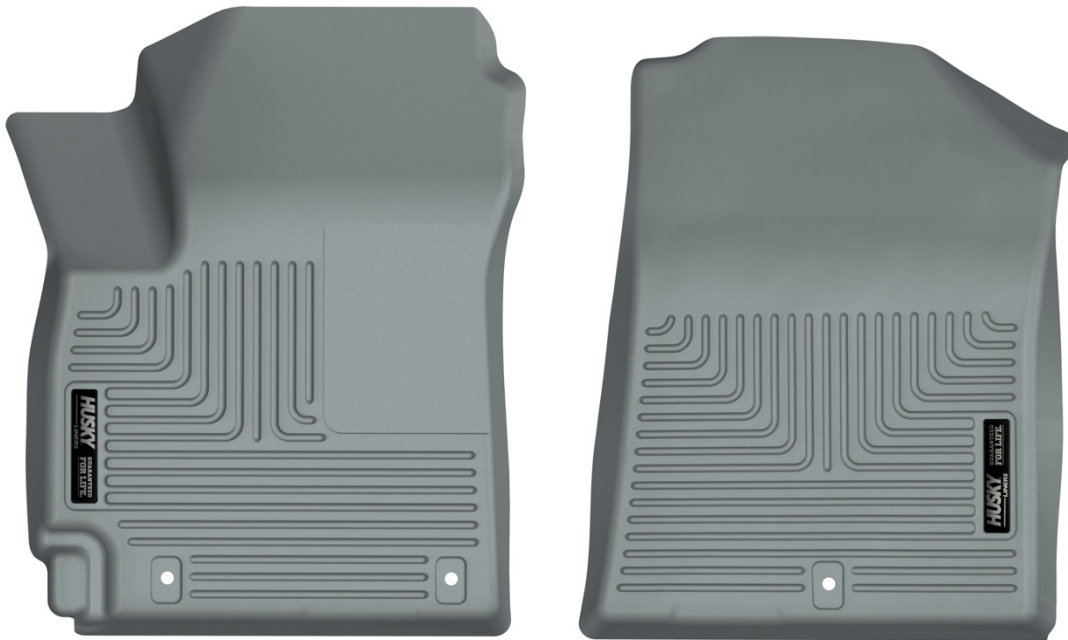
PT #9576

CARE AND USE INSTRUCTIONS

Thank you for selecting a WeatherBeater™ Floor Liner from Husky Liners. Your new front floor liners are custom molded to fit your Kia Soul. The liners are made to take the place of your factory floor mats. **For correct fit, it is necessary to remove the factory floor mats before installing your new floor liners.** However, do not remove the factory-installed carpeting.

Your liners are made from an engineering resin that is lightweight and extremely tough and durable. The easiest way to clean your liners is with a damp cloth or sponge. If using a cleaner, 409® or Glass Plus® work well. Use of Armor All®, Son-of-a-Gun® or similar items is discouraged as these products make the liners slick.

INSTALLATION INSTRUCTIONS FOR YOUR KIA SOUL FRONT FLOOR LINERS



TO EASE INSTALLATION OF YOUR NEW FRONT LINERS, MOVE BOTH FRONT ROW SEATS TO THEIR MOST REARWARD POSITION. WITH THIS DONE, INSTALL THE LINERS AS SHOWN ABOVE. THE DRIVERS SIDE LINER HAS TWO HOLES WHICH SNAP OVER THE FACTORY MAT RETAINERS. ONCE YOU HAVE INSTALLED YOUR LINERS, REPOSITION THE SEATS AS DESIRED.



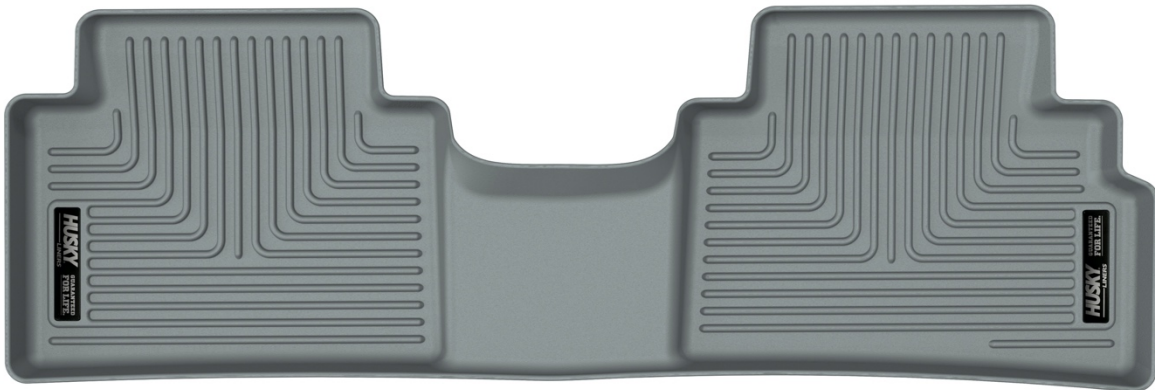
WEATHERBEATER[®] FLOOR LINERS

PT #9576

Thank you for selecting a WeatherBeater[™] Floor Liner from Husky Liners. Your new Second floor liners are custom molded to fit your Kia Soul. The liners are made to take the place of your factory floor mats. **For correct fit, it is necessary to remove the factory floor mats before installing your new floor liners.** However, do not remove the factory-installed carpeting.

Your liners are made from an engineering resin that is lightweight and extremely tough and durable. The easiest way to clean your liners is with a damp cloth or sponge. If using a cleaner, 409[®] or Glass Plus[®] work well. Use of Armor All[®], Son-of-a-Gun[®] or similar items is discouraged as these products make the liners slick.

INSTALLATION INSTRUCTIONS FOR YOUR KIA SOUL SECOND SEAT FLOOR LINERS



TO EASE INSTALLATION OF YOUR NEW SECOND SEAT LINERS, MOVE BOTH FRONT ROW SEATS TO THEIR MOST FORWARD POSITION. WITH THIS DONE, INSTALL THE LINERS AS SHOWN ABOVE. ONCE YOU HAVE INSTALLED YOUR LINERS, REPOSITION THE SEATS AS DESIRED.

[View other car and truck floor mats made by Husky on our website.](#)