

HUSKY **Weather** **BEATER**[™] **Custom Vehicle Floor Protection**

CARE AND USE INSTRUCTIONS

Thank you for selecting a WeatherBeater[™] Floor Liner from Winfield Consumer Products. Your new front floor liners are custom molded to fit your Toyota C-HR. The liners are made to take the place of your factory floor mats. **For correct fit, it is necessary to remove the factory floor mats before installing your new floor liners.** However, do not remove the factory-installed carpeting.

Your liners are made from an engineering resin that is lightweight and extremely tough and durable. The easiest way to clean your liners is with a damp cloth or sponge. If using a cleaner, 409[®] or Glass Plus[®] work well. Use of Armor All[®], Son-of-a-Gun[®] or similar items is discouraged as these products make the liners slick.

INSTALLATION INSTRUCTIONS FOR YOUR TOYOTA C-HR FRONT FLOOR LINERS



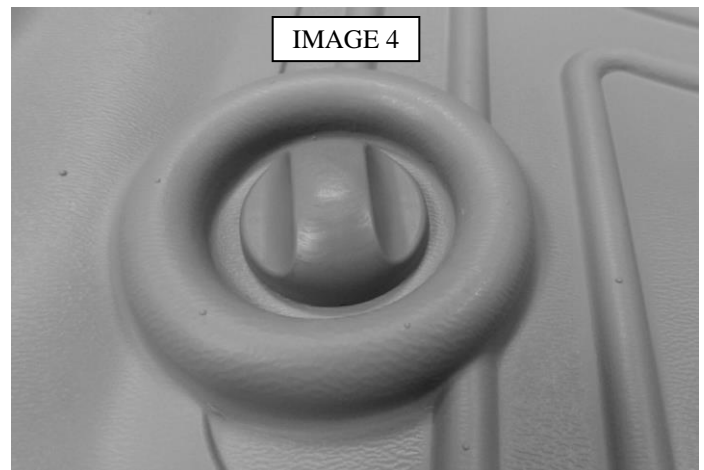
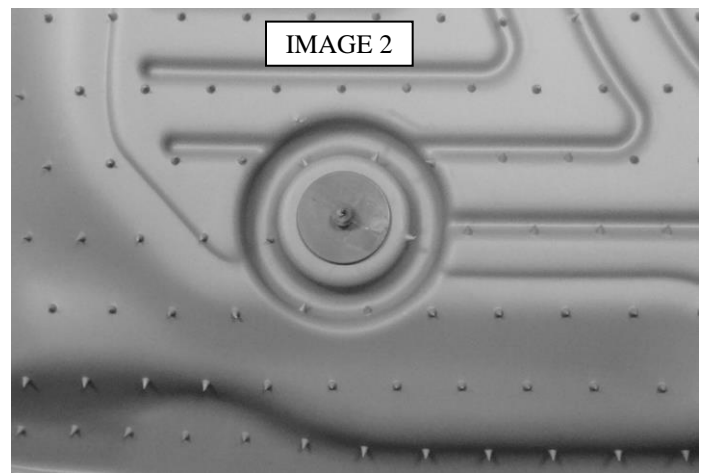
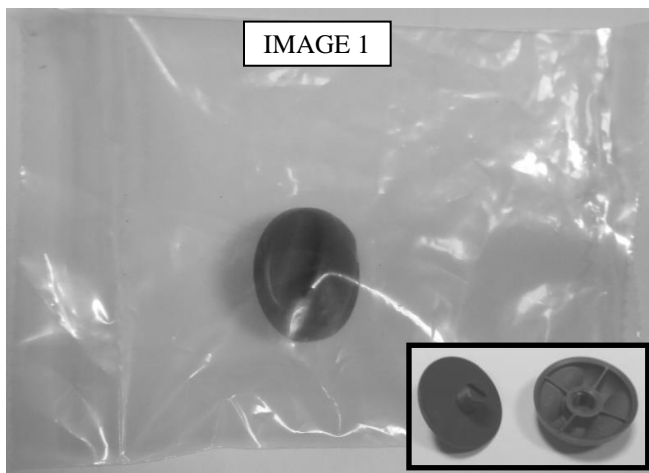
LEFT OR DRIVER'S SIDE



RIGHT OR PASSENGER'S SIDE

TO EASE INSTALLATION OF YOUR FRONT LINERS, MOVE BOTH FRONT SEATS TO THEIR MOST REARWARD POSITION. TAKE CARE THAT DRIVER'S SIDE LINER IS ATTACHED TO (SNAPPED OVER) THE FACTORY FLOOR MAT RETAINING POSTS. THE PASSENGER SIDE LINER INCLUDES A RETAINING CLIP AS WELL. PLEASE REVIEW THE INSTALLATION INSTRUCTIONS FOR THIS CLIP ON THE BACK OF THIS PAGE. ONCE YOU HAVE INSTALLED YOUR LINERS, REPOSITION THE SEATS AS DESIRED.

IN YOUR PACKAGING IS A FASTENER COMPONENT BAG. PLEASE LOCATE IT AS IT WILL BE USED TO SECURE THE PASSENGER SIDE LINER IN THE CORRECT POSITION. REMOVE THE FASTENER FROM THE BAG AND UNSCREW THE CAP FROM THE BASE (SEE IMAGE 1 BELOW) SO THAT THE FASTENER IS IN TWO (2) PIECES. THEN, INSERT THE BASE OF FASTENER UP THROUGH THE BOTTOM SIDE OF THE LINER SO THAT THE FINELY THREADED SHANK EXTENDS UP THROUGH THE HOLE IN THE LINER AS SHOWN IN IMAGES 2 AND 3 BELOW. NEXT, INSTALL AND POSITION THE LINER IN THE VEHICLE. WITH THIS DOES, USE A COIN, SCREWDRIVER OR SIMILAR TO TWIST THE BASE OF THE FASTENER. SCREWING IT INTO THE CARPETING (SEE IMAGE 3). LASTLY, AS SHOWN IN IMAGE 4, INSTALL THE CAP ONTO THE BASE. TIGHTEN THE CAP UNTIL YOU MEET RESISTANCE - DO NOT OVER TIGHTEN.



HUSKY **WeatherBEATER™** **Custom Vehicle Floor Protection**

CARE AND USE INSTRUCTIONS

Thank you for selecting a WeatherBeater™ Floor Liner from Winfield Consumer Products. Your new 2nd seat liner is custom molded to fit your Toyota C-HR. The liner is made to take the place of your factory floor mats.

For correct fit, it is necessary to remove the factory floor mats before installing your new floor liners.

However, do not remove the factory-installed carpeting.

Your liner is made from an engineering resin that is lightweight and extremely tough and durable. The easiest way to clean your liner is with a damp cloth or sponge. If using a cleaner, 409® or Glass Plus® work well. Use of Armor All®, Son-of-a-Gun® or similar items is discouraged as these products make the liner slick.

INSTALLATION INSTRUCTIONS FOR YOUR TOYOTA C-HR 2nd SEAT FLOOR LINER



TO EASE INSTALLATION OF YOUR 2ND SEAT LINER, FIRST MOVE THE FRONT ROW SEATS TO THEIR MOST FORWARD POSITIONS. WITH THE LINER INSTALLED, REPOSITION THE FRONT ROW SEATS AS DESIRED.