

HUSKYLINERS®

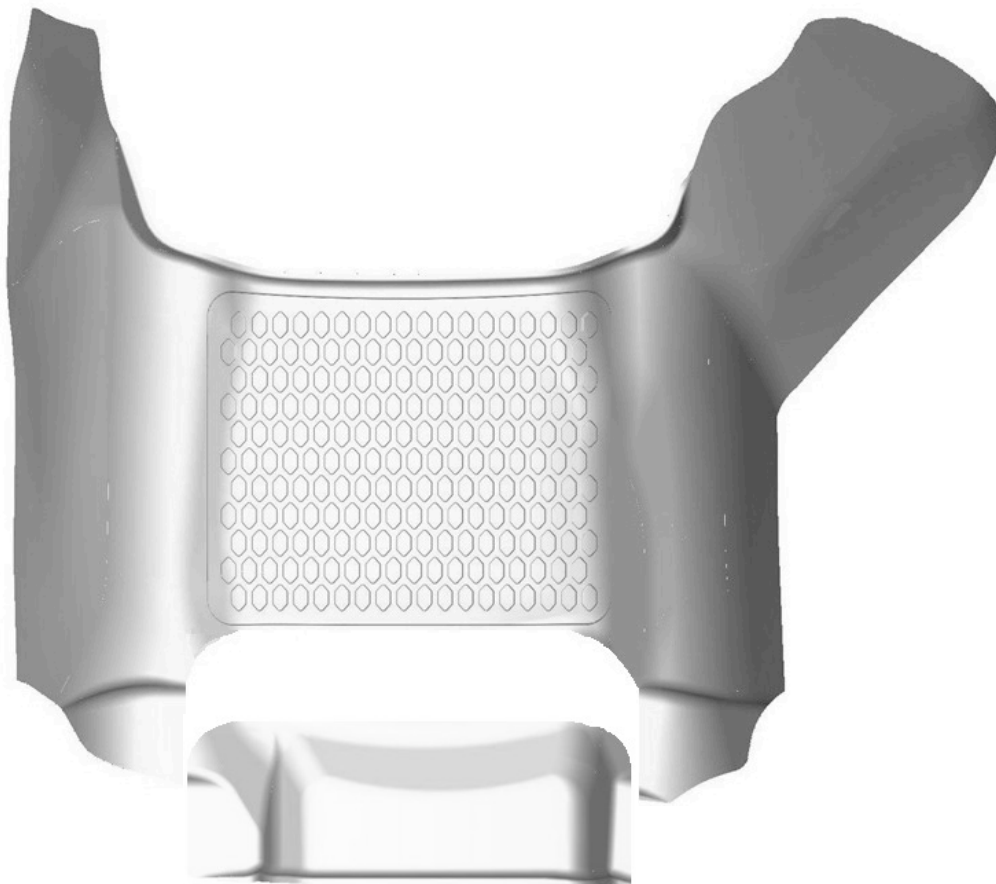
weatherBEATER

CARE AND USE INSTRUCTIONS

Thank you for selecting a WeatherBeater® Floor Liner from Winfield Consumer Products. Your new center hump liner is custom molded to fit your Dodge Ram 1500 Crew Cab truck. The liner is made to take the place of your factory floor mat. **For correct fit, it is necessary to remove the factory floor mats before installing your new floor liner.** However, do not remove the factory-installed carpeting.

Your liner is made from an engineering resin that is lightweight and extremely tough and durable. The easiest way to clean your liner is with a damp cloth or sponge. If using a cleaner, 409® or Glass Plus® work well. Use of Armor All®, Son-of-a-Gun® or similar items is discouraged as these products make the liner slick.

INSTALLATION INSTRUCTIONS FOR YOUR DODGE RAM CREW CAB & MEGA CAB TRUCK CENTER HUMP LINER



IF YOUR DODGE RAM TRUCK HAS THE STORAGE COMPARTMENT LOCATED ON THE TRANSMISSION TUNNEL IN FRONT OF THE CENTER SEAT, YOU WILL NEED TO TRIM YOUR CENTER HUMP LINER AS SHOWN ABOVE. TO TRIM, USE A PAIR OF HEAVY SHEARS OR A UTILITY KNIFE AND USE THE OFFSET IN THE LINER AS YOUR TRIMMING GUIDE.