



VEHICLE ARMOR™

Wheel Well Guards

7910 - Installation Instructions

2006-14 Ford F-150

PACKAGE CONTENTS:



Wheel Well Guard
Driver's Side (1)



Wheel Well Guard
Passenger's Side (1)



U-Clips (4)



SEM Screws (8)

TOOLS REQUIRED:

- Phillips Head Screwdriver
- Drill Motor, 1/8" & 1/4" Drill Bits

VEHICLE PREPARATION:

Your vehicle's rear fender wells should be cleaned prior to the installation of your new Wheel Well Guards.

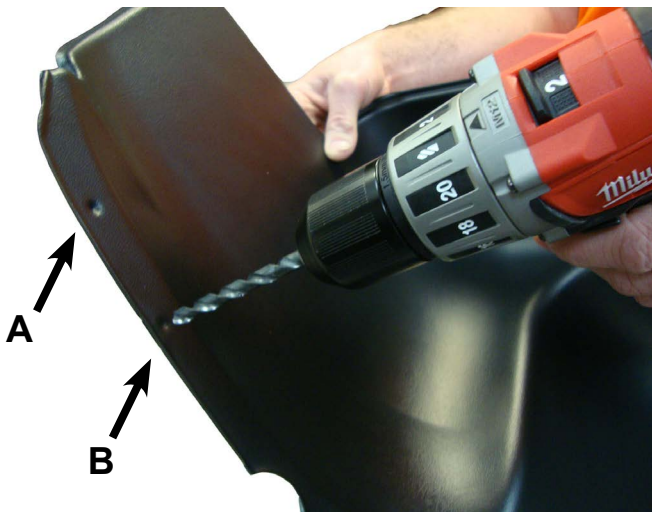


Installation

Read all directions thoroughly prior to the installation of your Wheel Well Guards.

A, B & E are installation locations that WILL require drilling.

C & D are pre-drilled fastener locations for installation.



1. There are 3 installation locations marked with an indent on each 7910 Wheel Well Guard. Depending on your vehicle configuration, 1 or 2 of these locations will need to be drilled with a 1/4" Drill Bit prior to installation.
 - F-150's **WITH** factory fender flares - Drill locations B & E (see above image for drill locations).
 - F-150's **WITHOUT** factory fender flares - Drill location A only.



2. Verify that you're installing the correct Wheel Well Guard by checking the part no. located on the backside on the part.

- 7910 DS installs on the driver's side.
- 7910 PS installs on the passenger's side.



3. Insert the Wheel Well Guard into the rear wheel well opening over the tire.

NOTE: It is not necessary to remove the tire.



4. Push The Wheel Well Guard up into the wheel well opening.



5. Insert the lower flap sections of the Wheel Well Guard into the fender well behind the fender well lip. Perform this step for both the front and rear lower flap sections.



6. Tuck the remaining portion of the Wheel Well Guard behind the fender lip all the way around the fenderwell opening.



7. Push the Wheel Well Guard up until it rests against the inside of the fender well. Drill 1/8" holes at locations C and D.

NOTE: Make sure that sheet metal is visible through Wheel Well Guard holes C and D prior to drilling.



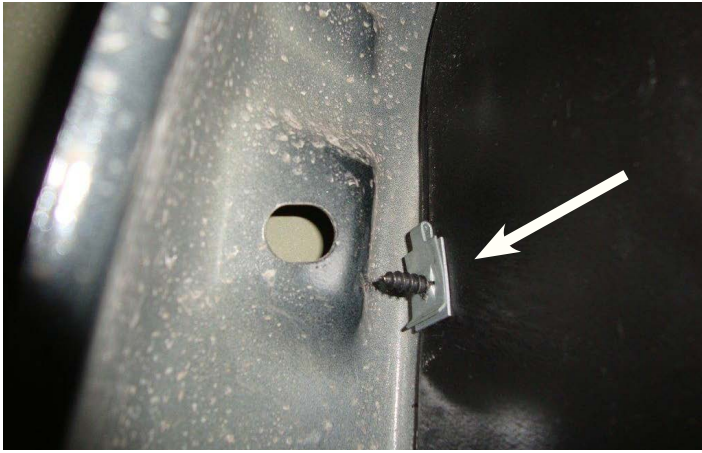
8. Install #10 SEM screws at locations C and D, through the Wheel Well Guard and into the pre-drilled sheet metal holes. Leave screws loose until all fasteners are installed.



9. Installation of SEM screws and U-Clips on lower fender:

For F-150s WITH factory fender flares - Install a #10 SEM screw at locations B and E through the fender flare, through the Wheel Well Guard and into a U-Clip (see image below).

For F-150s WITHOUT factory fender flares - Install a #10 SEM screw at location A through the fender, through the Wheel Well Guard and into a U-Clip (see image below).



10. Do not clip the U-Clip over the Wheel Well Guard. The U-Clip functions as a “nut” and is placed on top of the Wheel Well Guard at location A OR locations B and E (depending on your vehicle configuration).

11. Finish by tightening all fasteners.

Repeat steps 1-11 for the other side of the vehicle.