



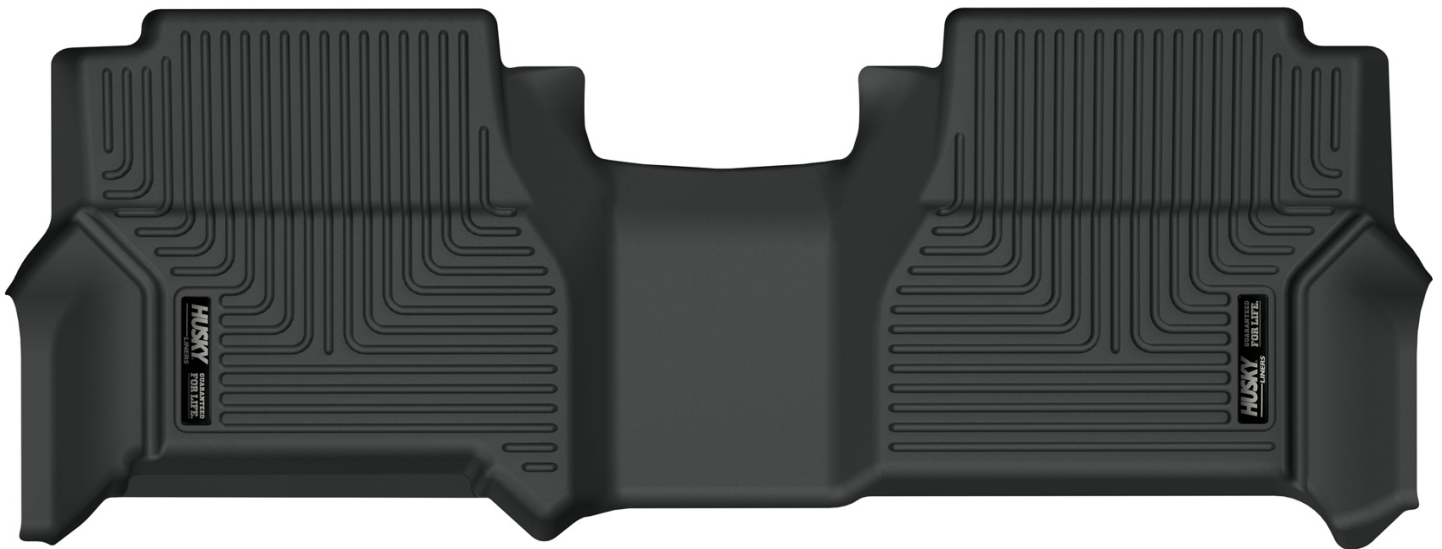
X-ACT CONTOUR[®] FLOOR LINERS

PT #5499

CARE AND USE INSTRUCTIONS

Thank you for selecting an X-act Contour™ Floor Liners from Husky Liners Inc. Your new liner is custom molded to fit your specific vehicle's floor board. The liner is made to take the place of your factory floor mat. ***For correct fit, it is necessary to remove the factory floor mat before installing your new floor liner. However, do not remove the factory-installed carpeting.***

Your liner is made from an engineering resin that is lightweight and extremely tough and durable. The easiest way to clean your liner is with a damp cloth or sponge and soap and water. Windex[®], 409[®] and ArmorAll[®] type cleaners work as well.

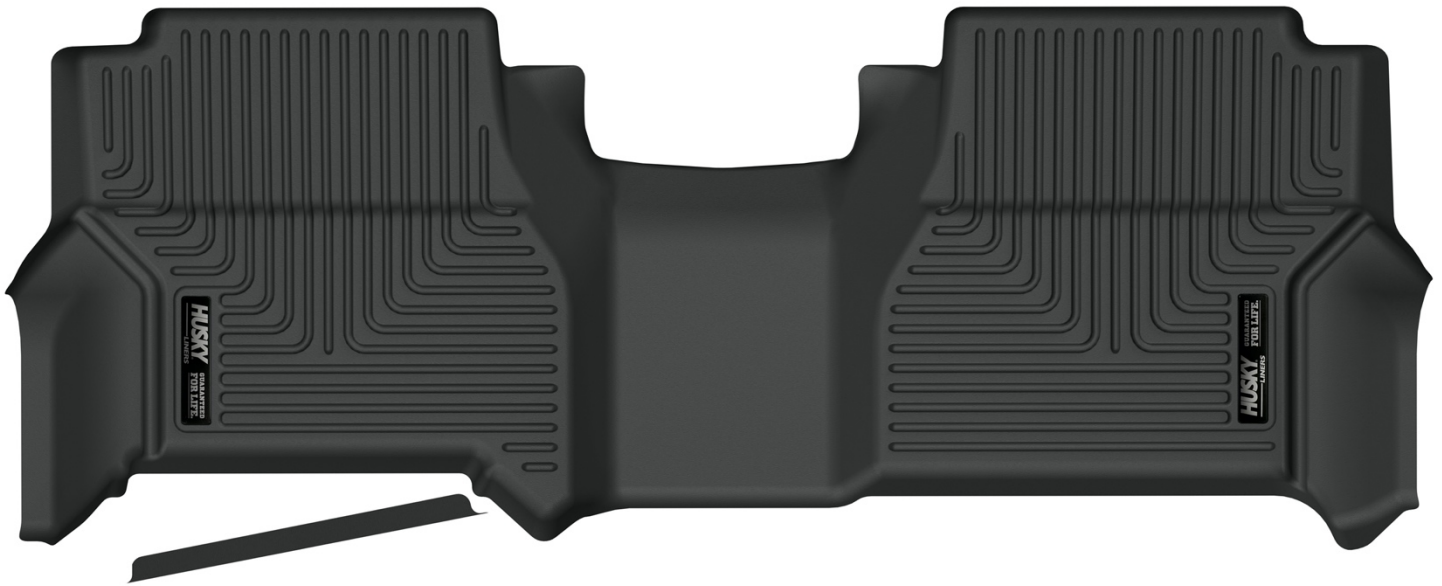


TO EASE INSTALLATION OF YOUR NEW LINERS, MOVE BOTH FRONT SEATS TO THE MOST FORWARD POSITION. WITH THIS DONE, INSTALL THE LINERS AS SHOWN ABOVE. ONCE YOU HAVE INSTALLED YOUR LINERS, REPOSITION THE SEATS AS DESIRED.



X-ACT CONTOUR[®]
FLOOR LINERS

PT #5499



IF YOUR TRUCK IS EQUIPPED WITH THE OPTIONAL FACTORY SUBWOOFER MOUNTED UNDERNEATH OF THE BACK ROW DRIVER'S SIDE SEAT, YOU WILL NEED TO TRIM A PORTION OF YOUR LINER AWAY TO ACCOMMODATE THIS FEATURE. TO TRIM, USE A UTILITY KNIFE OR HEAVY SHEARS AND FOLLOW THE STEP MOLDED INTO THE BACK DRIVER'S SIDE WALL OF THE LINER. THE SKETCH ABOVE DEPICTS THE TRIMMING.