



# X-ACT CONTOUR

## FLOOR LINERS

### CARE AND USE INSTRUCTIONS - PN: 53741

---

Thank you for selecting X-act Contour™ Front Floor Liners from Winfield Consumer Products. Your new front floor liners are custom molded to fit your Toyota Tacoma floor board. The liners are made to take the place of your factory floor mats. ***For correct fit, it is necessary to remove the factory floor mats before installing your new floor liners. However, do not remove the factory-installed carpeting.***

When installing your floor liners make sure that the floor mat retention hook on your vehicles floor board installs thru the retention hole in your floor liner and turn the twist lock to secure the driver's side. Push the passenger side retention point over the factory carpet post

Your liners are made from an engineering resin that is lightweight and extremely tough and durable. The easiest way to clean your liners is with a damp cloth or sponge and soap and water. Windex®, 409® and Armor All® type cleaners work as well.



**LEFT OR DRIVER**



**RIGHT OR PASSENGER**

**HUSKY FLOOR LINER RETAINING CLIP INSTALLATION INSTRUCTIONS**

**YOUR NEW LINER SET INCLUDES OUR NEW FLOOR LINER RETAINING CLIP SYSTEM. THIS RETAINING CLIP GIVES THE EXTRA SECURITY WHILE KEEPING SPILLS AND DEBRIS TRAPPED INSIDE THE LINERS. TO INSTALL THE HUSKY® LINER RETAINING CLIPS, SIMPLY FOLLOW THE INSTRUCTIONS BELOW:**

- 1) Pre fit your new X-act Contour floor liner in your vehicle (Image 1).
- 2) Insert the screw-in carpet retention screw into the bottom of the X-act Contour liner (Image 2).
- 3) Press down on the liner to pre-mark the carpet screw into the carpet (Image 3).
- 4) Screw the carpet screw into the carpet with a flat blade screwdriver (Image 4).
- 5) Press the X-act Contour liner over the top of the carpet screw post (Image 3).



Image 1.



Image 2.



Image 3.

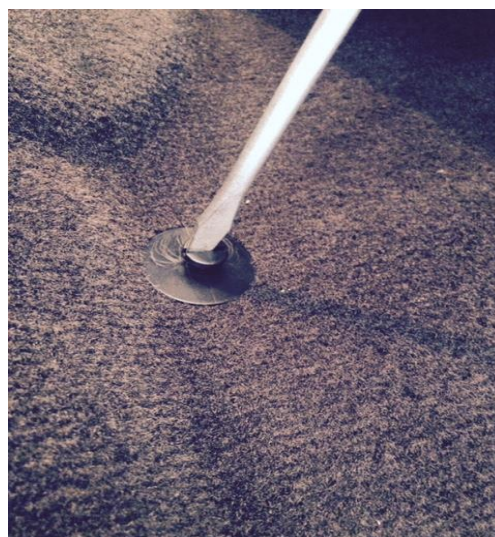


Image 4.