

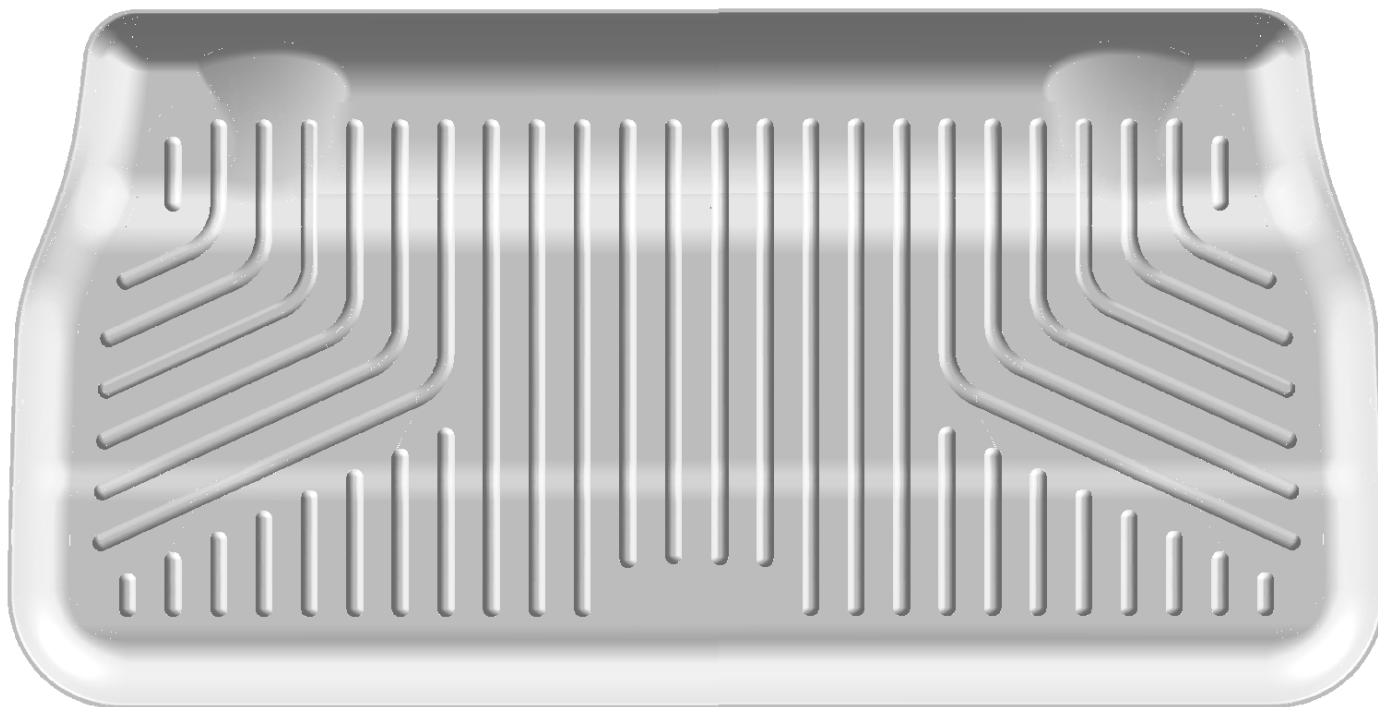
HUSKY **WeatherBEATER™** **Custom Vehicle Floor Protection**

CARE AND USE INSTRUCTIONS

Thank you for selecting a WeatherBeater™ Cargo Liner from Winfield Consumer Products. Your new Cargo liner is custom molded to fit your Chrysler Pacifica. Upon removal from the box your liner will not completely unroll and lay flat. This is normal and only temporary. Just place the liner on the floor or in the Cargo of your vehicle with a weight in each corner (a book works well). After about 15 minutes, your liner will remain flat. In colder climates this “relaxing” may take longer; moving the liner to a heated area will accelerate the process.

Your liner is manufactured using an engineering resin that is lightweight and extremely tough and durable. The easiest way to clean your liner is with a damp cloth or sponge. If using a cleaner, 409® or Glass Plus® work well. Use of Armor All®, Son-of-a-Gun® or similar items is discouraged as these products make the liner slick.

INSTALLATION INSTRUCTIONS FOR YOUR CHRYSLER PACIFICA CARGO LINER



TO INSTALL THIS LINER THE 3RD ROW SEATS MUST FIRST BE POSITIONED IN THE NORMAL PASSENGER “USE” POSITION. ONCE THE LINER IS INSTALLED, THE REAR SEATS CAN BE FOLDED FLAT DOWN INTO THE STORAGE WELL WITH THE LINER IN PLACE.