



## CARE AND USE INSTRUCTIONS – PN:53301

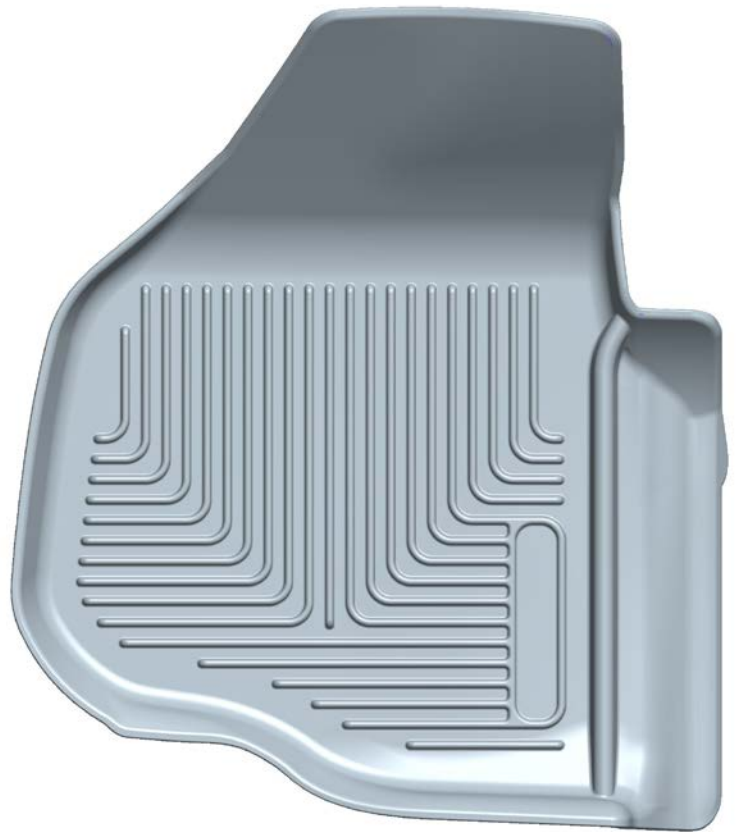
---

Thank you for selecting Xact Contour™ Front [Floor Liners](#) from Winfield Consumer Products. Your new front floor liners are custom molded to fit your specific vehicle's floor board. The liners are made to take the place of your factory floor mats. **For correct fit, it is necessary to remove the factory floor mats before installing your new floor liners.** However, do not remove the factory-installed carpeting.

Your liners are made from an engineering resin that is lightweight and extremely tough and durable. The easiest way to clean your liners is with a damp cloth or sponge and soap and water. Windex®, 409® and ArmorAll® type cleaners work as well.



LEFT OR DRIVER



RIGHT OR PASSENGER

\*Attention 2012 Super Duty owners: Ford added a foot rest in the upper left had corner of the driver's side floor board mid-year in 2012. Part #53301 is designed for applications without this foot rest.

**BELOW IS A PHOTO OF THE FOOT REST ADDED MID-YEAR TO THE 2012 SUPER DUTY. IF YOUR TRUCK HAS THIS FEATURE, YOU WILL NEED PART #53321 FOR THE PROPER FITMENT.**

