



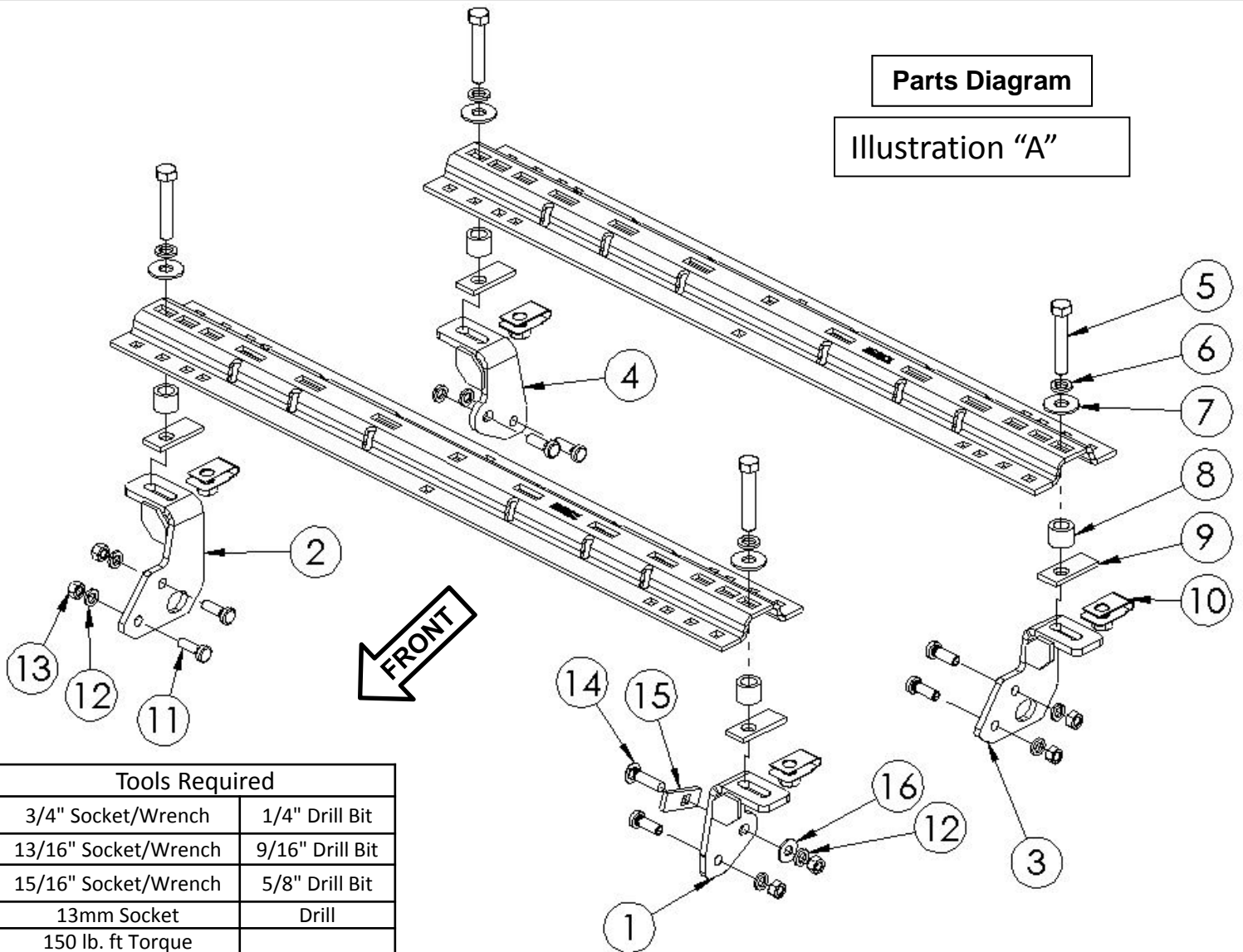
Assembly, Installation, Operation and Maintenance Instructions Base Rail Bracket Kit

P/N: 33139

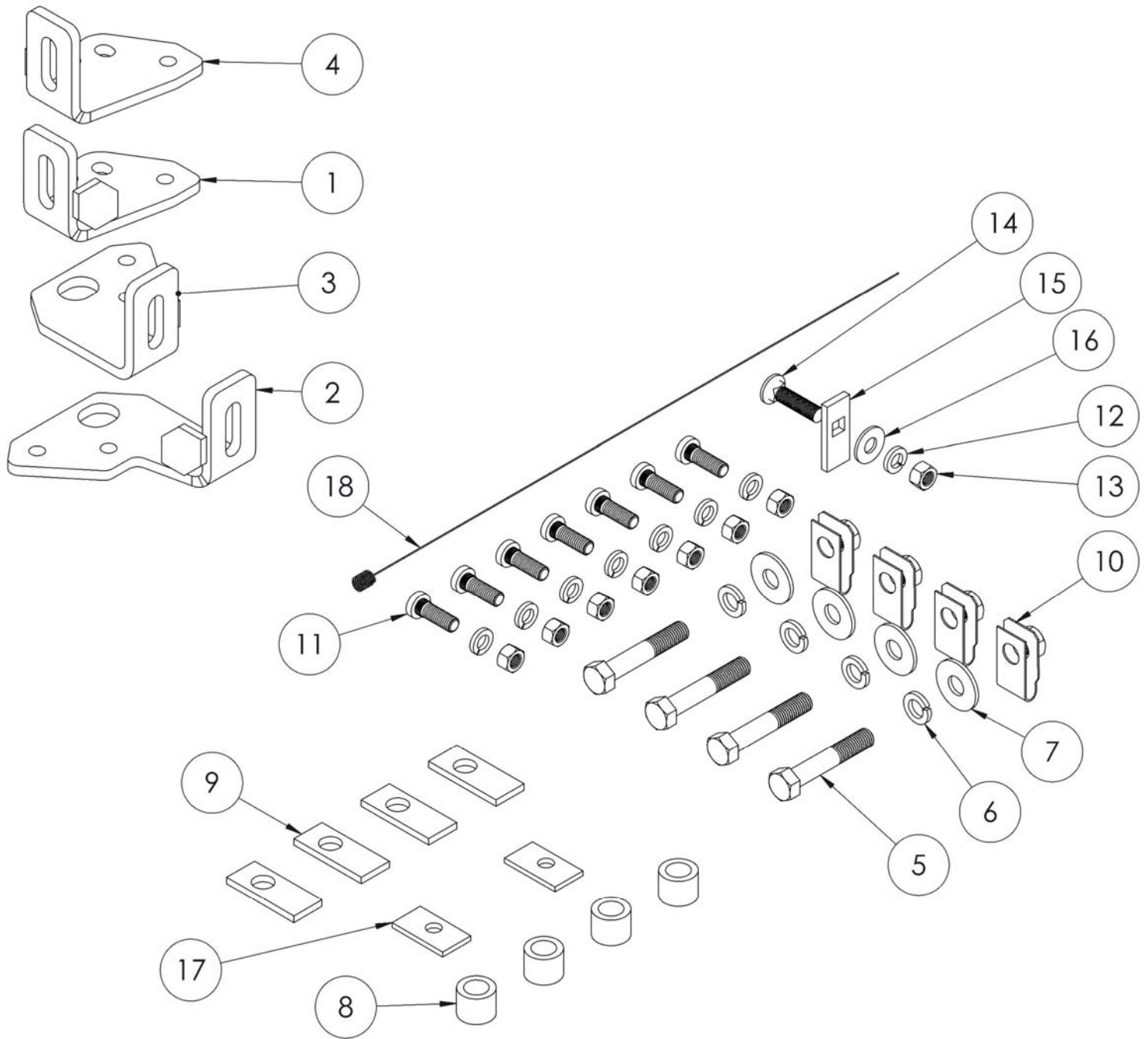
Provide a copy of these Instructions to the end user of this product. These Instructions provide important operating and safety information for proper usage of this product. Demonstrate the proper use of the product with the end user. Have the end user demonstrate that they understand the proper use of the product. Read and follow all instructions included in this manual. Ask your Dealer / Installer for assistance if you do not understand the proper use of the product. Never remove any decals from the product.

APPLICATION: FORD F250, F350, F450 Super duty Pick-Ups (w/ 6-1/2' & 8' Bed)

Use with 4 bolt 31323 or 10 bolt 30686 base rails. Base Rails are not included with this kit.



Tools Required	
3/4" Socket/Wrench	1/4" Drill Bit
13/16" Socket/Wrench	9/16" Drill Bit
15/16" Socket/Wrench	5/8" Drill Bit
13mm Socket	Drill
150 lb. ft Torque Wrench	



Complete Parts List

Item No.	Description	Qty.	Item No.	Description	Qty.
1	Driver Side Front Bracket	1	10	Clip Nut 5/8	4
2	Passenger Side Front Bracket	1	11	Wheel Bolt ,1/2 -13 X 1-1/2" Long	7
3	Driver Side Rear Bracket	1	12	Lock Washer (1/2")	8
4	Passenger Side Rear Bracket	1	13	Hex Nut (1/2")	8
5	Hex head Bolt, 5/8 -11 X 3-1/2"	4	14	Carriage Bolt 1/2-13X2" Long	1
6	Lock Washer (5/8")	4	15	Spacer Plate for 1/2" Carriage Bolt	1
7	Flat Washer (5/8")	4	16	Flat Washer (1/2")	1
8	Spacer Tube (1")	4	17	Spacer plate 3/16" Thick	2
9	Bed Spacer Plate	4	18	Pull Wire (1/2")	1

CAUTION:

DO NOT install mounting rails over plastic bed liners. Plastic bed liners must be cut out of the way. Base rails may be installed on dry/cured spray in liner. **Note: Consult installer for recommended curing time.**

DO NOT install this kit on truck with less than 6' bed.

Use only the supplied bolts, nuts, and washers to install this kit. All nuts and bolts are Grade 5 unless specified otherwise.

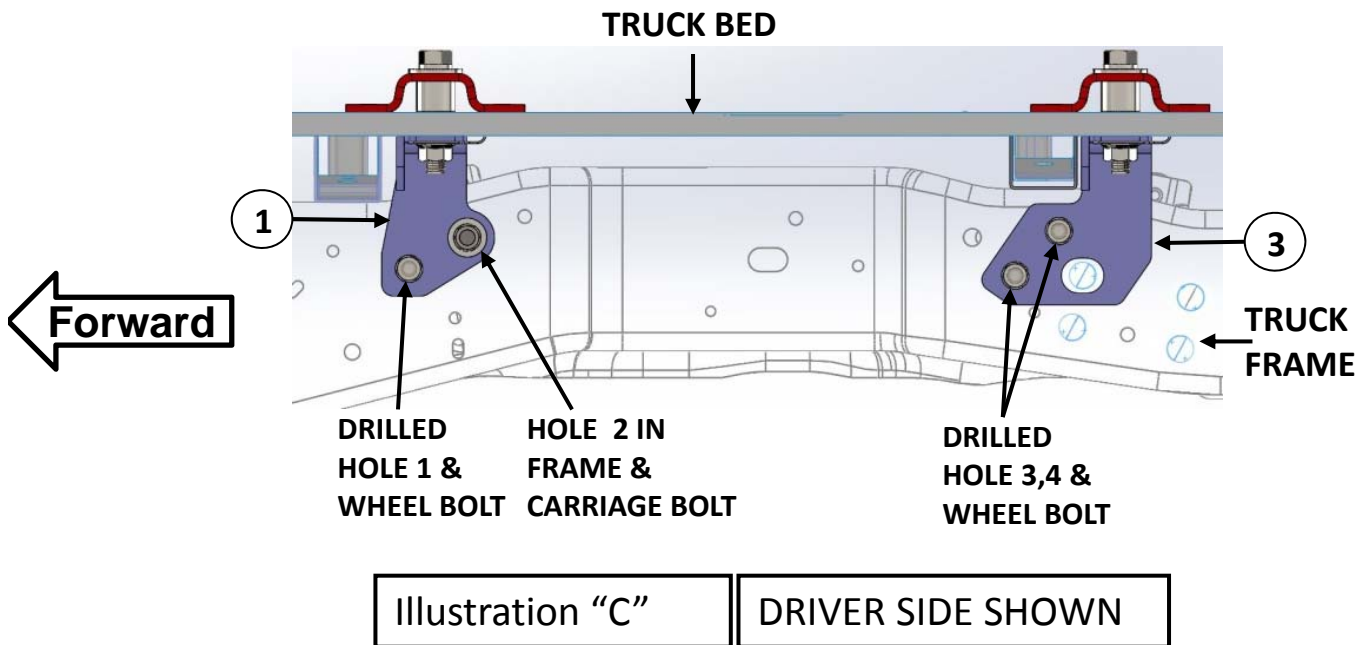
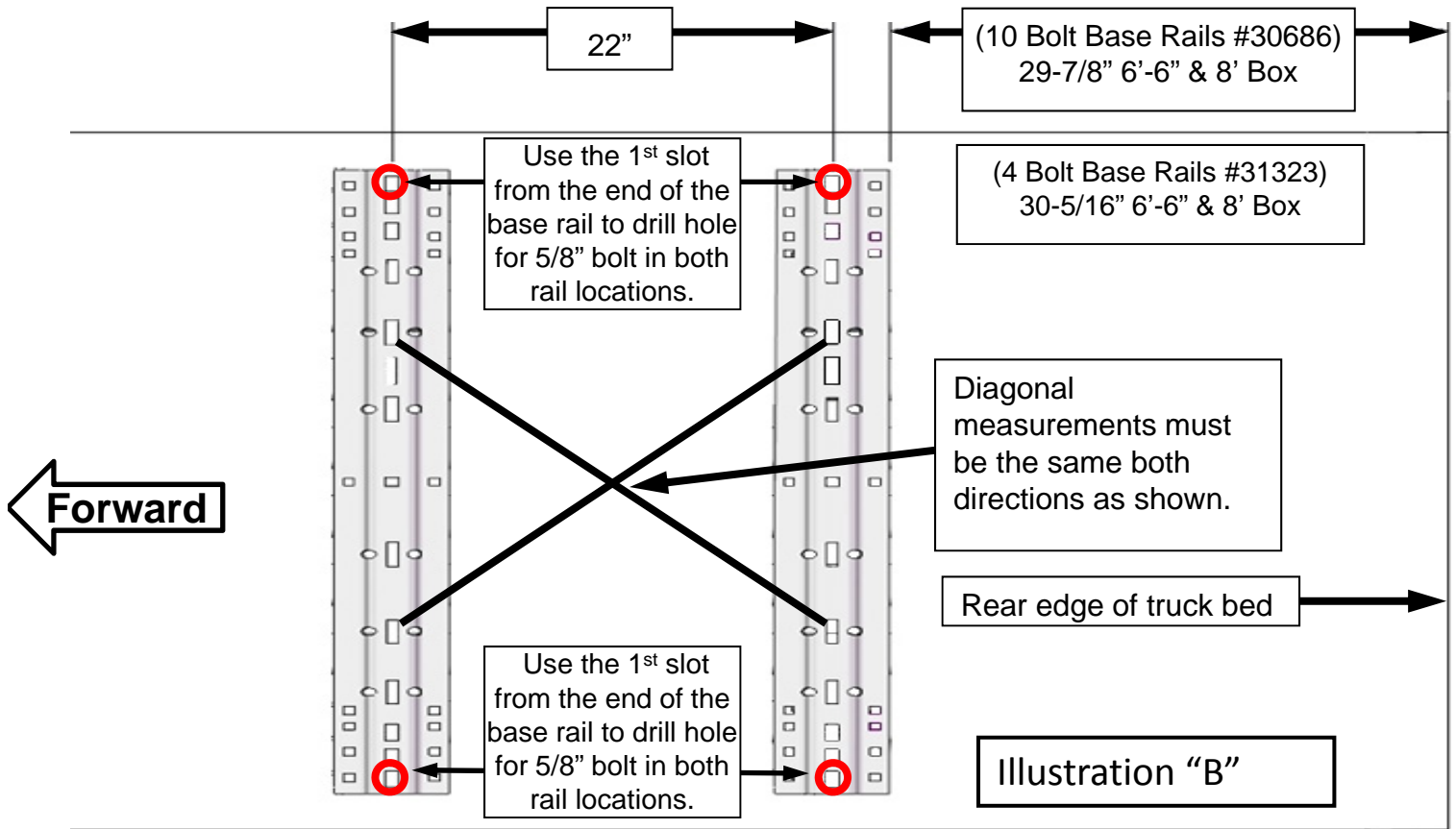
These instructions are guidelines only. Actual installation is the responsibility of the installer and the owner. Always measure truck and trailer before installing hitch to be sure that there is clearance at the cab and at the bumper to allow for turns.

The following instructions should be used to mount the fifth wheel. Care and attention to detail will ensure a quick quality installation. Check parts against parts list to become familiar with parts in kit.

1. The wheel well liners will need to be removed to access the frame for bracket installation.
2. Place the two bed rails across the truck bed between the wheel wells. Securely attach the 5th wheel cross member to uprights. Position the 5th wheel uprights between the bed rails so that the tabs in the base of each upright will fit into the slots in the bed rails. Secure the uprights in place with the rail hitch pins and hair pins supplied with the 5th wheel installation kit
3. On most applications, the 5th wheel assembly should be positioned so that it is approximately centered over the truck axle (in this case ahead of axle) and between the wheel wells on the bed floor.
4. Position the bed rail assembly in truck bed as shown on the Illustrationtration "B" on page 3 of this instruction sheet. When hitch is correctly positioned in the bed and the bed rails are parallel, mark four attachment points on the truck bed using the 5/8" square holes indicated on the layout Illustrationtration as guides. Check below the bed before drilling holes to see that all wiring, brake lines, or other obstructions are moved out of the way and will not be contacted by the drill. Move the hitch assembly out of the way and drill four 5/8" diameter holes down through the bed at the previously marked points.



Check for obstructions before drilling. Failure to do so could result in damaged fuel or brake lines , structural members, etc. HUSKY TOWING PRODUCTS does its best to communicate tow vehicle manufacturer changes; however, it is ultimately the responsibility of the installer to prevent damage due to installation.



5. Position the brackets under the bed , at the four attachment locations and align with the 5/8" drilled holes in the bed . See Illustration "A" and "C" for details on bracket location,

- Reposition the bed rails in the bed so that the correct square 5/8" hole in the end of each rail is lined up over the drilled holes. Place a 1" spacer tube (#8) under end of each bed rail, in line with the drilled holes. See Illustration "D" on Page 3

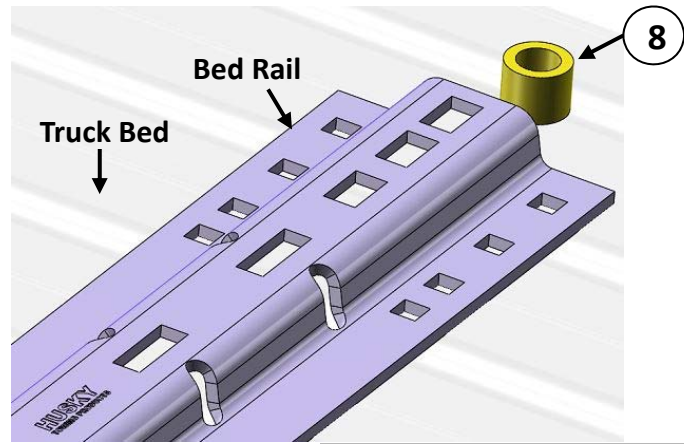


Illustration "D"

Bed Spacer Plate (#9)

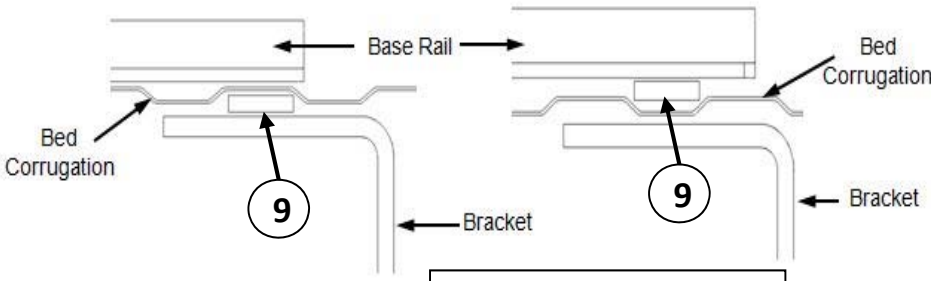
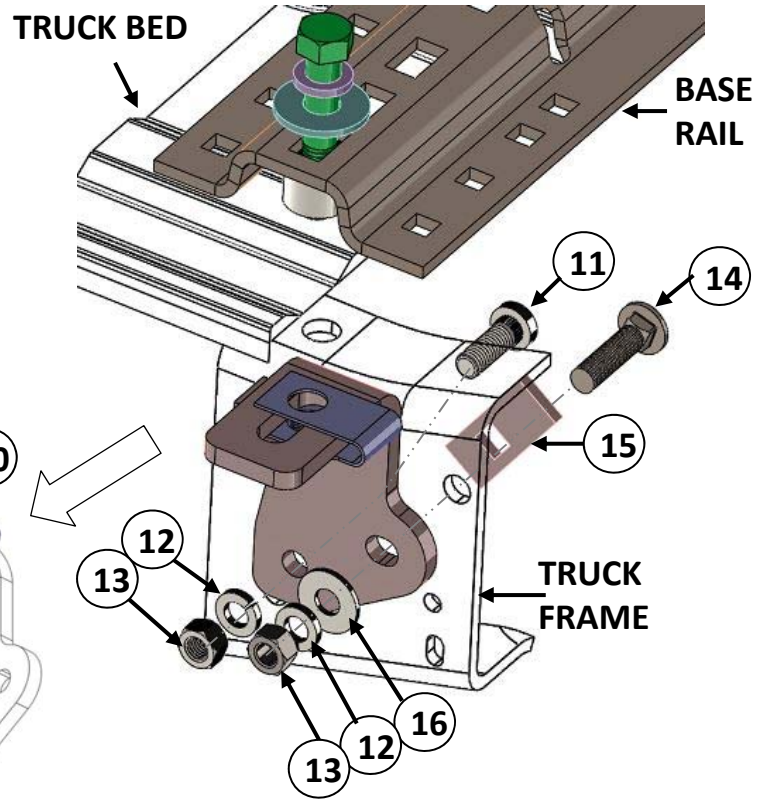


Illustration "E"

- The bed corrugation above the bracket is UP, leaving a space above the bracket. Insert the sort end of spacer plate (#9) in this location as shown on Illustration "E".

- Position the brackets so that they rest tightly against the flat side of the truck frame and underneath surface of truck bed. Drop the 5/8" hex bolts (#5) down through the lock washer (#6), flat washer (#7), bed rails, spacers and brackets. Be sure the brackets are tight against the side of truck frame before tightening bolts. Hand tighten the 5/8" hex bolts.



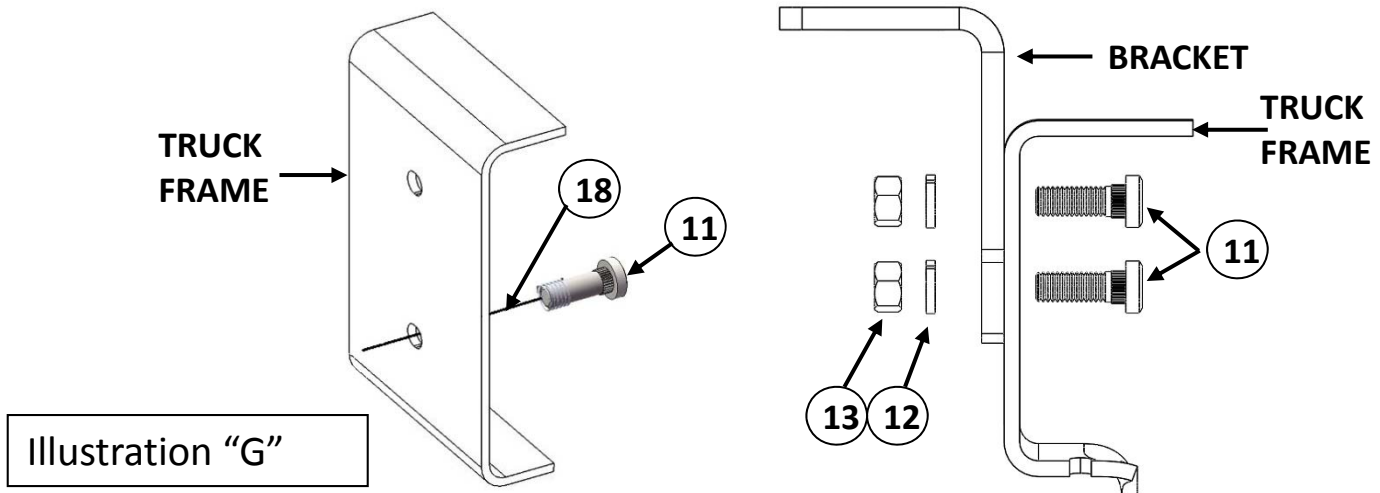
- Before drilling any holes in truck frame, check inside the frame to be sure that there are no wires, brake lines or other obstructions in the frame which may be contacted by the drill. Each of the brackets must be attached with two bolts . The Driver side front bracket is attached with one wheel bolt through drilled hole #1 and the carriage bolt through the hole #2. The carriage bolt (#14) pass through spacer plate (#15), frame ,bracket (#1), flat washer (#16), lock washer(#12) and hex nut(#13). See Illustration "F".

Illustration "F"

FRONT DRIVER SIDE SHOWN

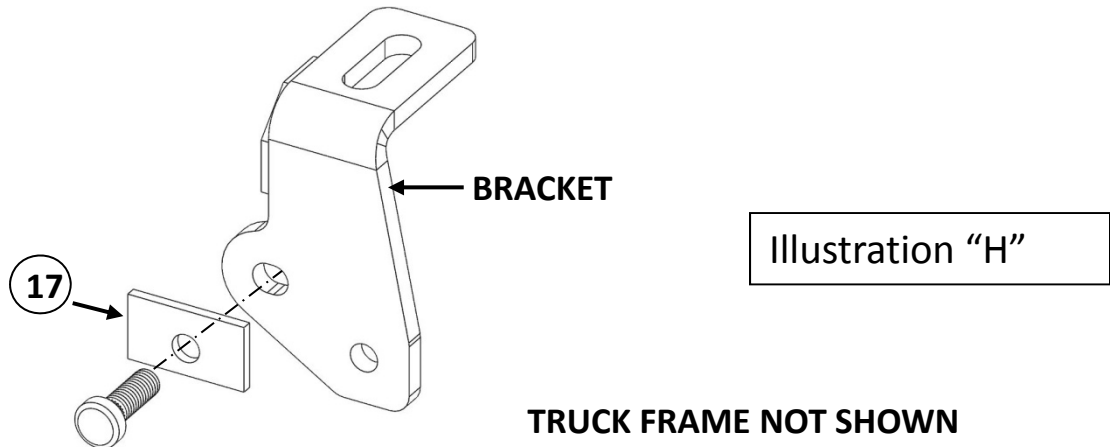
10. The three remaining brackets must be attached to the frame of the truck with two 1/2" wheel bolts (#11). Drill 17/32" holes through the side of the truck frame using the two holes in each bracket as guides. See Illustration "G".

CAUTION: Holes MUST be drilled 17/32" diameter, so that the special wheel bolts will seat properly. If holes are too small, the bolt may break. If holes are too large, the bolt will not grip properly.



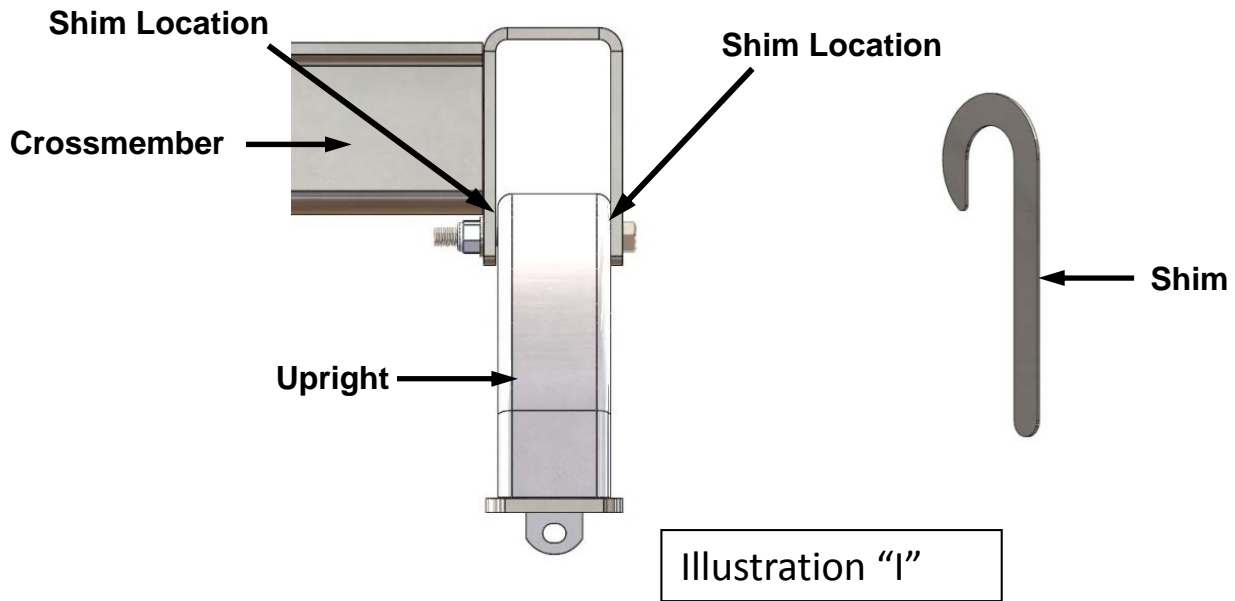
11. Place the 1/2" wheel bolts (#11) into the frame first and then out through the brackets. Some applications will require the use of a pull wire (#18) to align the bolts in to the drilled holes in the frame. Thread the pull wire coil over the end of the wheel bolt and pull through frame and bracket. See Illustration "G".

NOTE: On some applications, a spacer plate (#17) may be required on the inside of the truck frame at the upper hole on the driver and passenger side rear brackets (#3) and (#4) before inserting the wheel bolts. See Illustration "H" for correct location. Secure each bracket to the truck frame. The knurled portion of the bolts will lock into the frame holes as the nuts are tightened. The use of air wrench will make installation easier.



12. Tighten all 1/2" attachment bolts to 75 ft.-lbs. torque. Failure to tighten bolts as described may result in fastener loss or failure.
13. Tighten each 5/8" bed rail attachment bolt to 150 ft.-lbs. torque. Failure to tighten bolts as described may result in fastener loss or failure. **DO NOT apply torque to the nut portion of the clip nuts (#10). You will DAMAGE it.**

14. Re-install the plastic wheel well filler panels removed in step 1 using the original fasteners
15. Check each rail hitch pin for freedom of movement in the bed rail connection. Adjust uprights, if necessary, by placing shim 31582 or 30243 between the upright and the cross member to obtain free pin movement. See Illustration "I". Shims 31582 & 30243 sold separately.



Warranty Terms:

5 Year Limited Warranty:

This warranty applies solely to Husky 5th Wheel Installation Kit manufactured by DTS Mfg. for Husky Towing Products.

Husky Towing Products and DTS Mfg. make no guarantees or warranties for products not manufactured by DTS Mfg. Such products are covered solely under any applicable warranty of the manufacturer. It is always recommended that the operating instructions and guarantee instructions provided by the manufacturer are followed.

DTS Mfg. warrants its products to be free from manufacturing and material defects to the original purchaser for the length of warranty stated above from the date of retail purchase. If any products are found to have a manufacturing or material defect, the product will be replaced or repaired at the option of Husky Towing Products and DTS Mfg. with proof of purchase by the original purchaser. The original purchaser shall pay all transportation and shipping costs associated with the return of the defective product and the defective product shall become the property of DTS Mfg.

The Warranty applies to DTS Mfg. products used for individual and recreational purposes. Commercial usage of the DTS Mfg. products limits the warranty to 90-days from date of purchase.

The Warranty applies only to DTS Mfg. products which are found to be defective in manufacturing or material. This warranty does not apply to normal wear and tear of the finished placed on DTS Mfg. products.

Husky Towing Products and DTS Mfg. are not responsible for any labor costs incurred for removal or replacement of the defective product.

Husky Towing Products and DTS Mfg. are not responsible for repair or replacement of any product under the limited warranty where the product was improperly installed, misapplied, altered, abused, neglected, overloaded, misused or damaged as a result of an accident, including any use of the product not in accordance with all product operating and safety instructions.

Without limiting the generality of the foregoing, Husky Towing Products and DTS Mfg. shall under no circumstances be liable for any incidental or consequential loss or damage whatsoever arising out of, or in any way relating to any such breach of warranty or claimed defect in, or non-performance of the products. Some states do not allow the exclusion or limitation of incidental or consequential damages, so the above exclusion or limitation may not apply to you.

This limited warranty gives you specific legal rights, and you may also have other rights that vary from state to state.