



WEATHERBEATER™ FLOOR LINERS

PT #1475

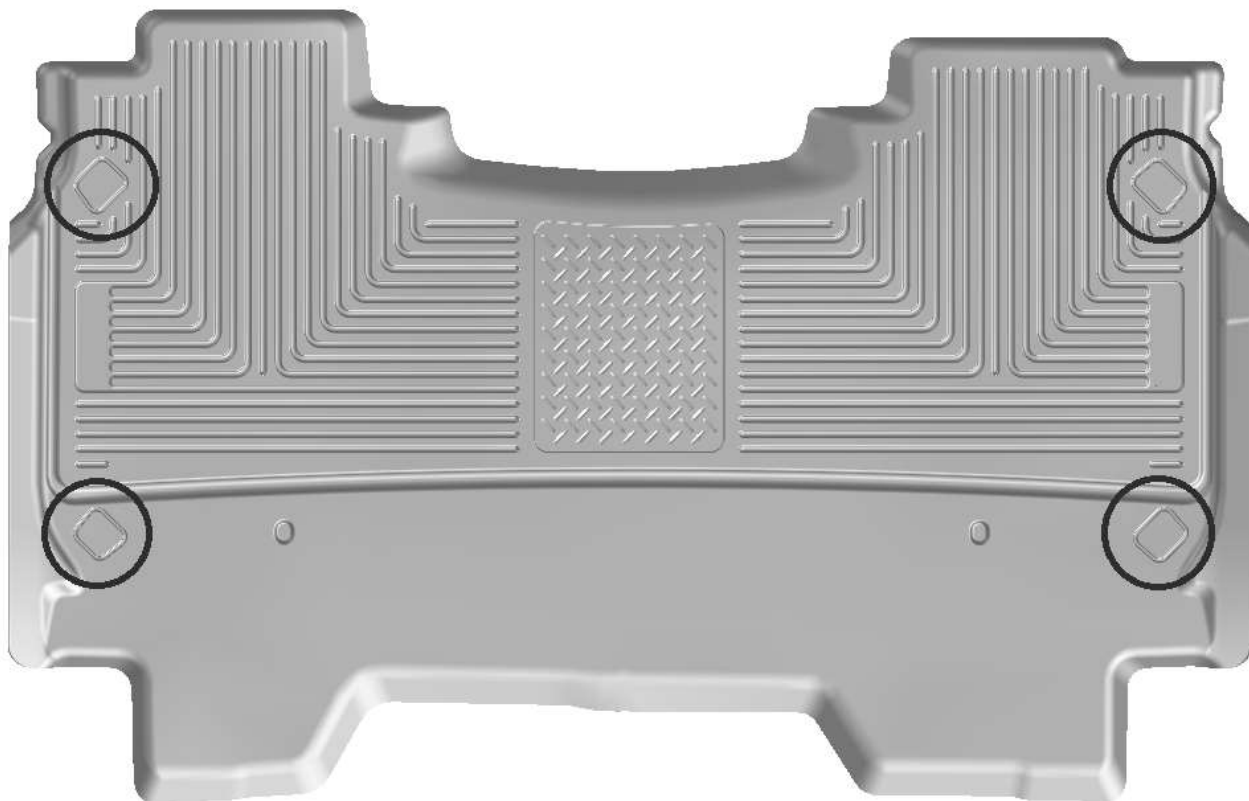
CARE AND USE INSTRUCTIONS

Thank you for selecting a WeatherBeater™ Floor Liner from Winfield Consumer Products. Your new 2nd seat liner is custom molded to fit your Ram Crew Cab truck. The liner is made to take the place of your factory floor mats. **For correct fit, it is necessary to remove the factory floor mats before installing your new floor liners.**

However, do not remove the factory-installed carpeting.

Your liner is molded using an engineering resin that is lightweight and extremely tough and durable. The easiest way to clean your liner is with a damp cloth or sponge. If using a cleaner, 409® or Glass Plus® work well. Use of Armor All®, Son-of-a-Gun® or similar items is discouraged as these products make the liner slick.

SECOND SEAT FLOOR LINER INSTALLATION INSTRUCTIONS FOR RAM CREW CAB TRUCKS



PRIOR TO INSTALLING YOUR 2nd SEAT LINER, SLIDE BOTH FRONT ROW SEATS COMPLETELY FORWARD. WITH THIS DONE, INSTALL THE LINER, POSITIONING IT AS SHOWN ABOVE. ONCE THE LINER IS IN PLACE, REPOSITION THE FRONT SEATS AS DESIRED. THE LINER TUCKS UNDER THE AIR DUCTS THAT ARE LOCATED UNDER THE BACK OF THE FRONT SEATS (SEE PHOTO ON BACK OF PAGE).

THE 2ND SEAT LINER CAN BE TRIMMED TO ALLOW ACCESS TO THE CARGO TIE-DOWN HOOKS LOCATED IN THE TRUCK FLOOR. TO ACCESS THE HOOK LOCATION(S), SIMPLY TRIM THE MATERIAL FROM INSIDE OF THE RAISED RIBS (CIRCLED ABOVE).



**WEATHERBEATER™
FLOOR LINERS**

PT #1475



Rely only on high-grade car and truck floor mats offered on our virtual shelves.