

Sport Sway Bar Kit 22834
06-UP BMW E90-E93

Installation of Hotchkis Front Sway Bar

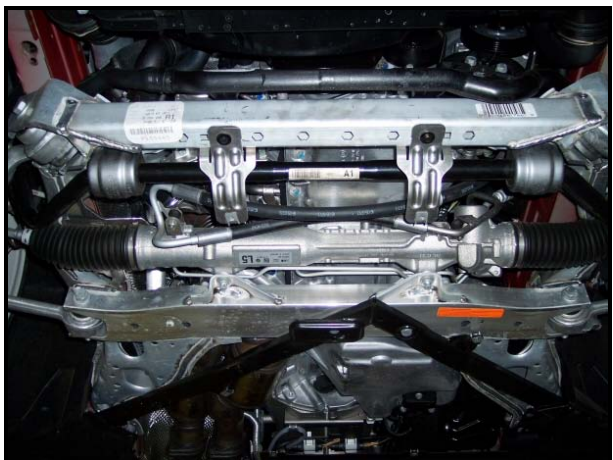
1F *Raising Vehicle*

Raise front of the vehicle by using a 4 post lift or drive-on ramps. Securely block the rear wheels of the vehicle. Do not remove the front wheels during installation for safety.



2F *Remove Front Splash Shield*

Remove front lower splash shield and note the orientation of the sway bar.



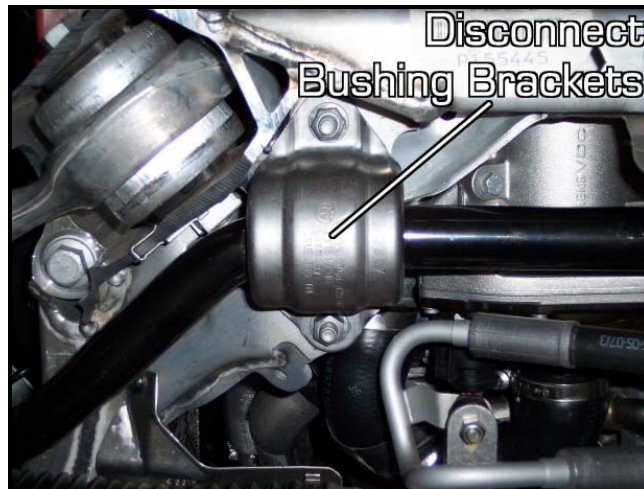
3F *Disconnect End Links*

Remove end link nuts that attach to the sway bar and push end links aside.



4F *Disconnect Bushing Brackets*

Remove the sway bar bushing brackets.

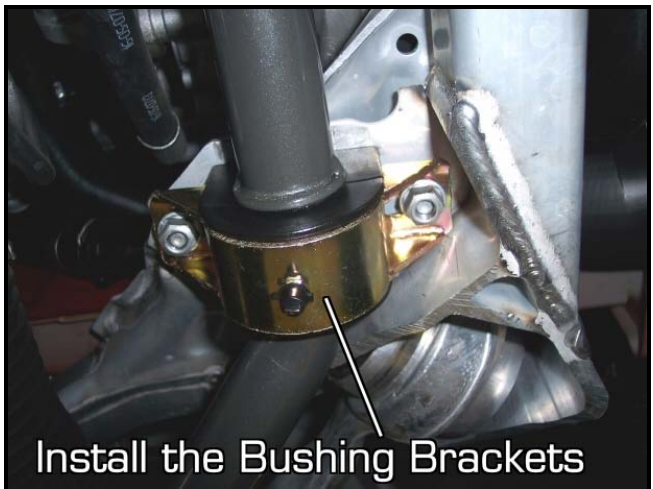
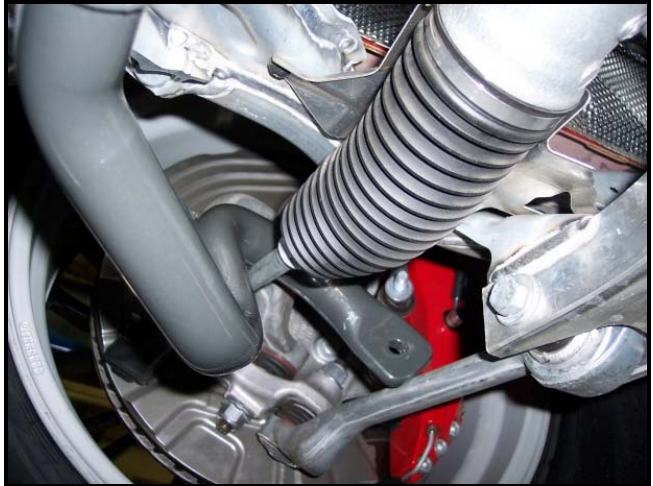
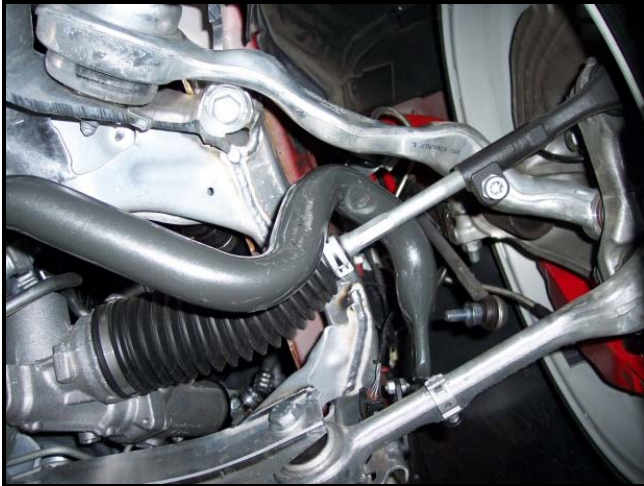


5f *Remove the bar from vehicle*

Lower the sway bar down and shift it to the driver side of the car. Lift the sway bar as high as possible on driver side, and rotate the passenger side of bar away from the tie rod. Now you can completely remove the sway bar from the car.

6f *Install Hotchkis Front Sway Bar*

Install the new sway bar in the exact reverse order as removal. Make sure to lube the new urethane bushings with the supplied grease. Use the included Hotchkis bushing bracket. It is slightly more difficult to install the Hotchkis bar due to the larger diameter. If you are unable to find the "sweet spot" to rotate the new sway bar into location, you can jack up the car, remove the wheels, disconnect the tie rods and the bar will fall right in. **Use the supplied blue lock-tight on the end-link nuts. Make sure to fully tighten the end link nuts.**





7F *Reinstall Splash Guard*
Install splash guard and your done with the front.



8F *Double-Check for Tightness*
Make sure to double check all fasteners.

9F *Sway Bar Stiffness*
95% Stiffer than Stock

Installation of Hotchkis Rear Sway Bar

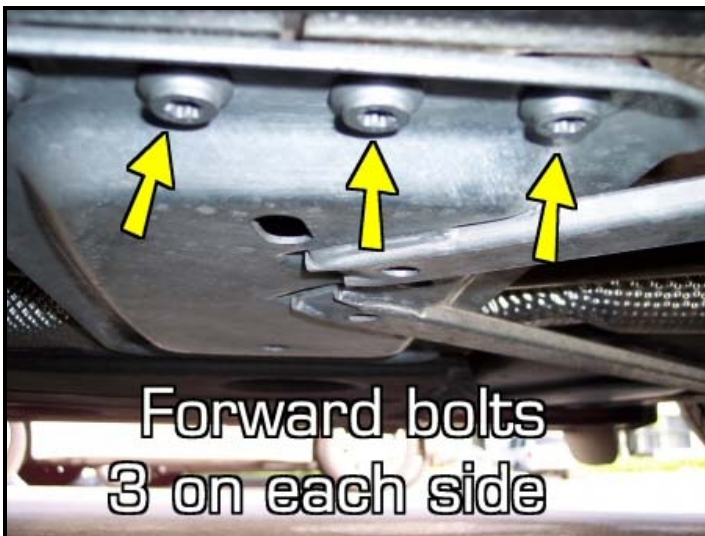
1R *Raising Car*

Raise the vehicle and support with jack stands. Remove the rear wheels.

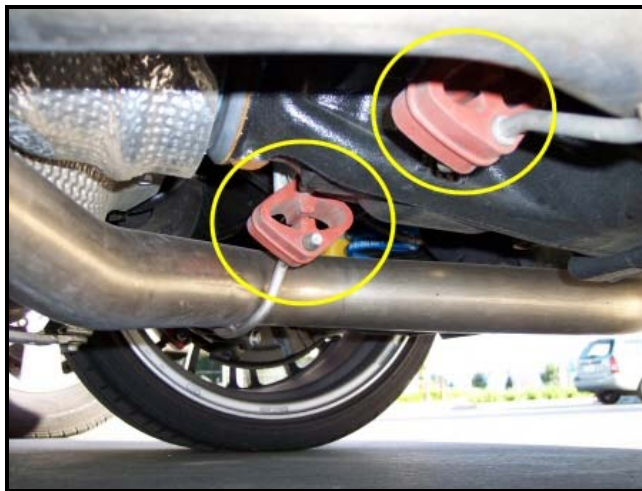
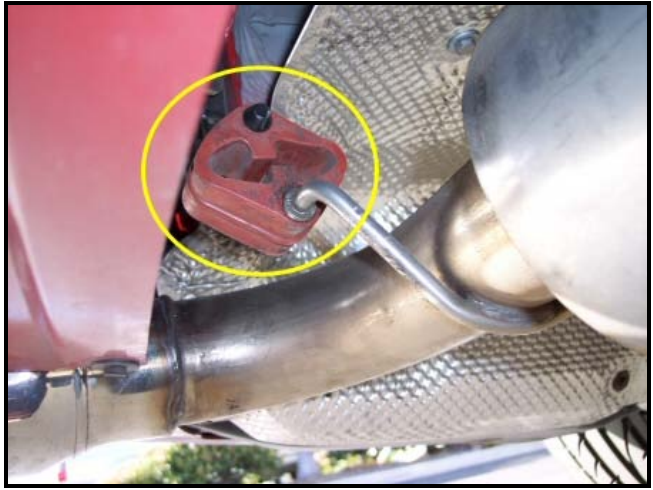
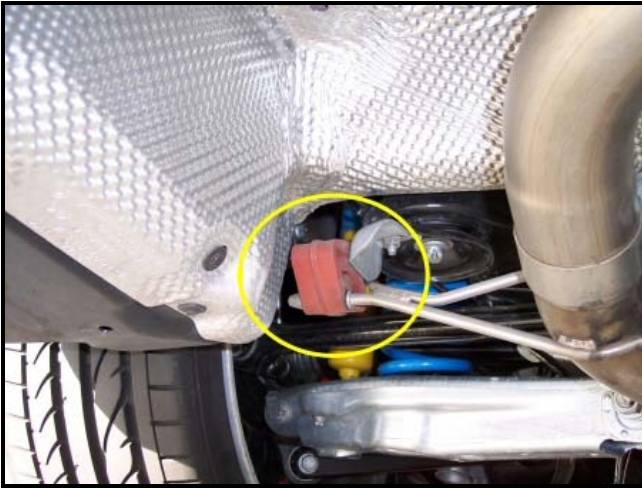


2R *Remove Chassis Brace*

Locate and remove the chassis brace from under the vehicle. There are 6 bolts holding the front section of the brace and 2 bolts (one on each side) holding the rear.



- 3R *Disconnect Exhaust Hangers*
Locate and disconnect the rear rubber exhaust hangers.

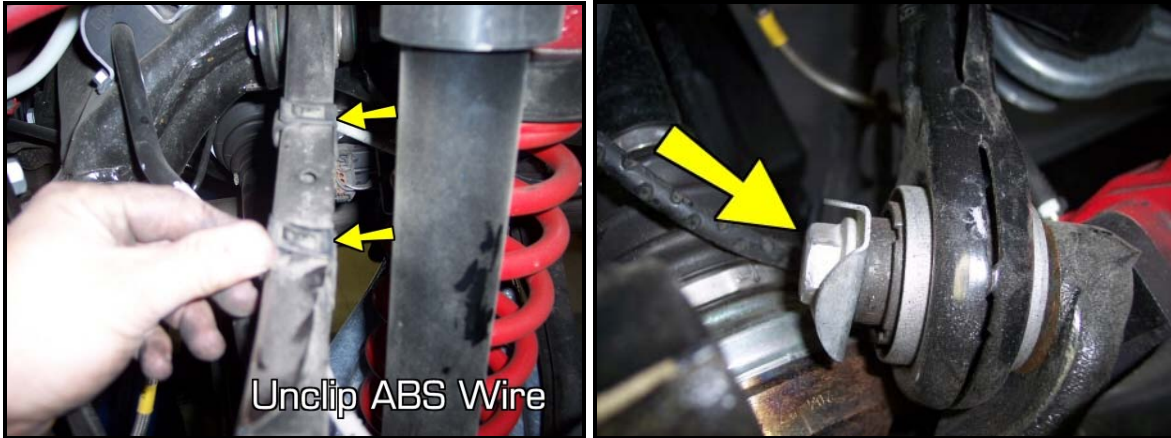


- 4R *Disconnect End Links*
Locate and disconnect the end-links from the sway bar.



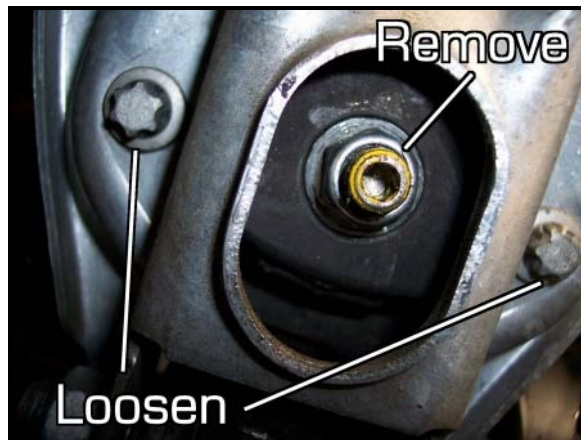
5R *Disconnect Upper Control Arm*

Disconnect the ABS sensor wire from the upper control arm. Remove the bolt that attaches the upper control arm to the knuckle, and rotate the control arm up and out of the way.



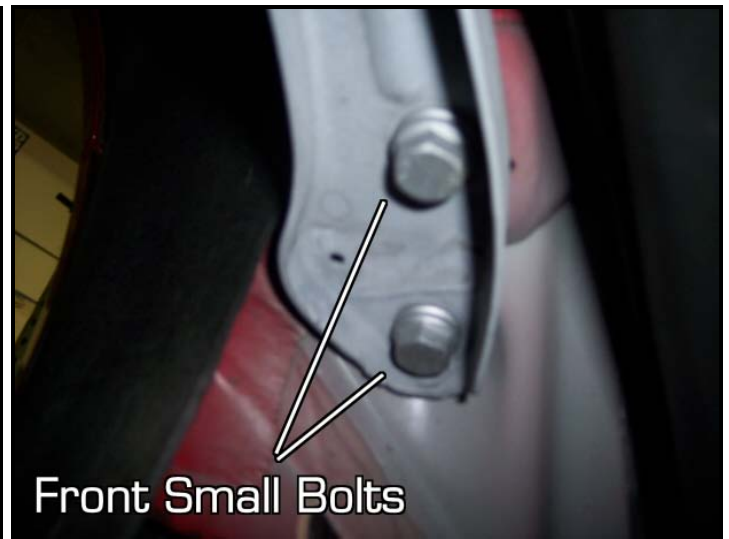
6R *Disconnect Lower Shock Mount*

Support the lower control arms with jacks. Loosen the side bolts and remove the nut that attaches the lower shock mount to the lower control arm. Slowly lower and remove the jacks from supporting the lower control arms.



7R *Drop the Rear Subframe*

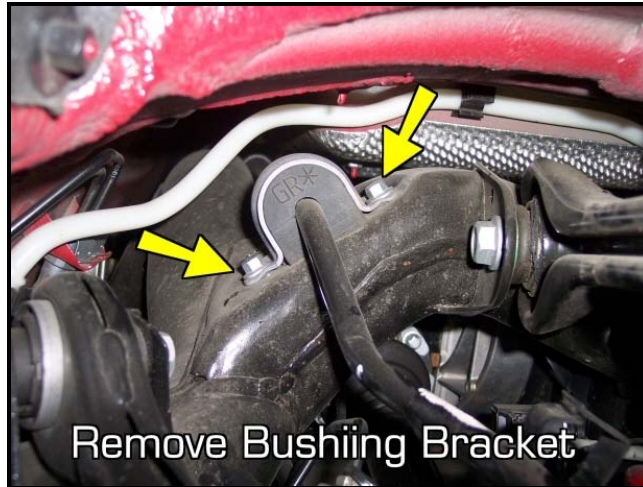
Place a jack under the differential to support the sub-frame. There are 4 main bolts that hold the subframe to the chassis (2 front & 2 rear). There are also 4 smaller bolts (2 on each side) that connect the front mounts to the chassis. Remove these smaller bolts. Locate and remove the rear sub-frame bolts. Next locate the front sub-frame bolts and loosen about halfway, but DO NOT remove them all of the way.



Carefully lower the sub-frame down with the jack until you can access the sway bar bushing brackets. Be careful not to lower the sub-frame too much, or damage to the brake lines will occur.

8R *Disconnect Bushing Brackets & Remove Stock Bar*

Remove the sway bar brackets and bushings, and pull the sway bar out from the Drivers side of the vehicle. The bushing brackets may be stuck onto the bushings, so you may need to spray WD-40 and have a little patience getting them off.



9R *Install Hotchkis Rear Sway Bar*

Install the new sway bar in the same manner it was removed.

10R *Install Hotchkis Bushing Brackets*

Grease the new urethane bushings with the supplied grease, and install with the new brackets onto the sway bar. Make sure to use the supplied flat cut washers with the factory bolts, and install with blue lock-tight.



11R *Finish Installation in Reverse Order*

Finish the installation in the reverse order that everything was removed. Make sure to use blue lock-tight on the end-link nuts.

12R *Double Check Hardware*

Make sure all hardware is fully tightened before driving the vehicle. You are done with the installation. The vehicle does not require an alignment after this installation.

13R *Sway Bar Stiffness*

105% Stiffer than Stock