

HOTCHKIS HOTCHKIS SPORT SUSPENSION

2260R REAR SPORT SWAY BAR

68-74 GM X-BODY / NOVA, APOLLO, OMEGA, VENTURA



- **This installation will require drilling new mounting holes in the body. Please read the instructions carefully to avoid unnecessary drilling.**

INSTALLATION OF HOTCHKIS PERFORMANCE REAR SWAY BAR

- 1) Securely block the front wheels of the vehicle.
- 2) Remove the rear seat cushion. If the cushion won't pull up easily, then use a long screwdriver to push and release the small bar that is clipped in the bracket. Remove the bolts holding the back part of the seat to the body and lift the cushion upwards to remove it.



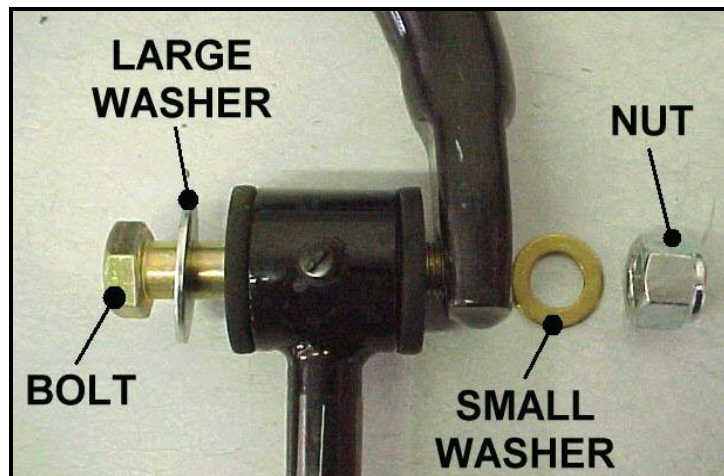
- 3) Use a jack to raise the rear of the vehicle and support it with jack stands. **Make certain the rear axle is supported with the vehicle's load on the leaf springs.** *This will keep the axle in its normal position to ensure that the sway bar is installed in the correct position to the body.*
- 4) Use the grease provided to apply a heavy coat of grease to the inside of the sway bar bushings.



- 5) Place the greased bushing over the bar with the split in the bushing facing away from the legs of the anti-sway bar. *The split should be facing towards the rear of the car when the bar is fully installed.* Place the bushing retainer brackets over the top of each bushing.



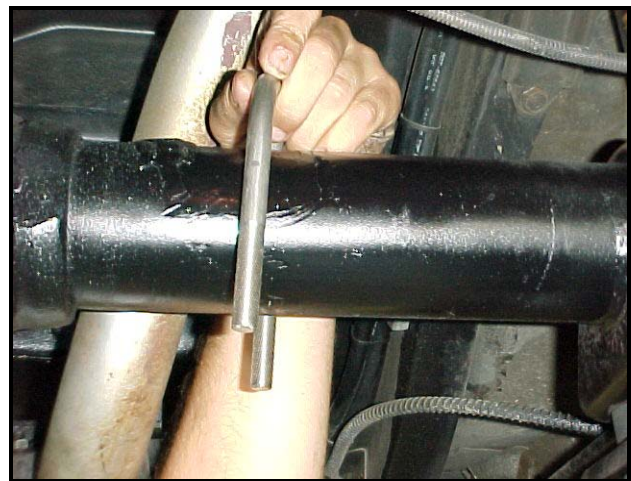
- 6) Grease the outsides of the bushings at each end on the 'dog-bone' end links. Use the long (3") bolts from **hardware kit #T1712** to connect the end links to the inside of the sway bar. *Make certain the larger diameter washer is up against the bushing side and the smaller washer is up against the sway bar side.* This will prevent the bolt from pulling through the bushing over time. 'Hand tighten' the hardware only at this step. *Leave the end link loose enough to rotate.*



- 7) Use the shorter length bolts (2-3/4") from **hardware kit #T1712** to attach the triangular bracket to the end links. *The larger end of the bracket should be closer to the ground when installed.* Loosely start the hardware so that the assembly can rotate freely.



- 8) Take a screwdriver and carefully pry the brake lines loose from the clips on each end of the axle. With the brake lines moved out of the way, drop the u-bolts included with **hardware kit #T1722** over the top of the axle.



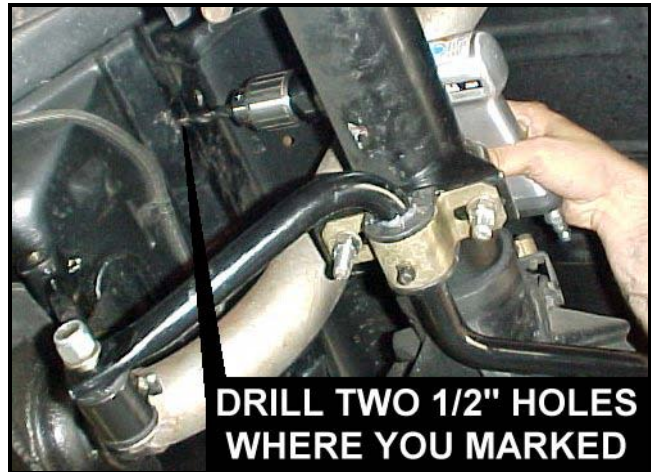
- 9) Lift the bar assembly into place under the rear of the car with the arms of the bar pointing forward. Use the axle mount brackets provided to hang the sway bar loosely from the axle. Slide the u-bolts as necessary to center the sway bar on the axle.



- 10) Use the Anti-Seize provided in hardware kit #T1722 to apply a small amount on the u-bolt threads. This will prevent damage to the nylock nuts when tightening or possible damage to the u-bolts. With the bar centered on the axle tighten the u-bolt hardware to 35-40 ft-lbs.



- 11) Rotate the sway bar into place with the triangle brackets up against the body. Use a scribe or other marking tool to mark the locations of the holes on the body matching the bracket. Drill out two 1/2" diameter holes on each side to match the bracket locations.



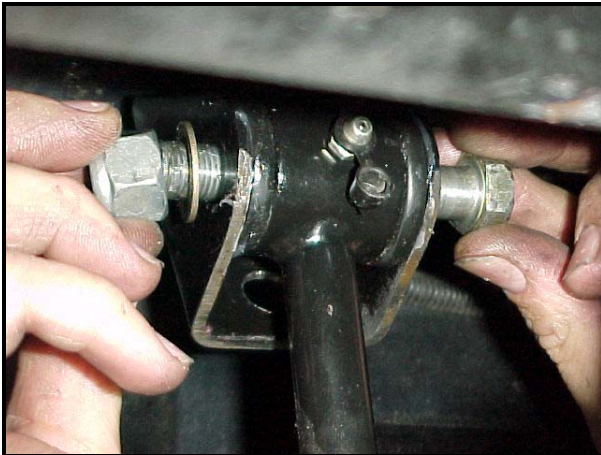
- 12) Drop the stud plate in from the passenger compartment through the holes. **Place one of the large washers provided over the lower stud on the plate.** This will act as a shim. It is also *suggested* to apply a ring of silicone gasket sealer to the edges of the holes and the stud plate to act as a water sealant.



- 13) Remove the triangle brackets from the end links. Attach the brackets to the stud plate **with the large end of the bracket closest to the ground**. Tighten the hardware holding the bracket in place. Torque the nuts to 30 ft/lbs.



- 14) Re-attach the end links to the brackets, and tighten all attaching hardware on the end links. Torque the end link hardware to 35 ft/lbs



WARNING: Check the end link clearance to the bracket hardware. If the hardware contacts the end link it can wear a hole through the end link as the bar pivots during use. You will not be able to install the bar if the stud plate makes contact with the end link.

- 15) Check that all attaching hardware is tight. Use the caps provided to cover the zerk fittings on the end links. Use a jack to remove the jack stands and lower the car.



- 16) Re-install the rear seats. Slide the upper seat into position so that the top catches on the clips on the seat support. Tighten the bolts holding the seat in place to 20 ft/lbs. Slide the lower cushion back into place and you're done installing the Hotchkis rear sway bar!



IMPORTANT: For proper maintenance grease the bushings at least once a year (15,000 miles) or whenever excessive noise occurs. Use a non-lithium based grease only! Lithium grease can dissolve with water and should not be used.

CHECK OUT EVERYTHING ELSE HOTCHKIS OFFERS FOR YOUR GM X-BODY!



- ✓ Front sway bar to complete the set and help eliminate unwanted body roll!
- ✓ Machined tie rod sleeves to help steering precision!



- ✓ Coils and leaf springs to lower your car 2" for appearance and improved cornering!
- ✓ Upper and Lower Tubular Control Arms that Improve Suspension Geometry!

68-74 GM X-body Rear Sway Bar, Parts List P/N 2260R

	Hotchkis P/N	Description	Quantity per kit
1	22910011	68-74 X-body rear bar	1
2	15.12.06.39	Universal Sway Bar Bracket, Greasable	2
3	5337G	7/8" Greasable Bushing, Car Style	2
4	T2211	Sway Bar Axle Bracket Kit (2 brackets per kit)	1
5	23990004	Welded Nut Plate	2
6	25210036	9" Dog Bone End Link Kit (2 end links per kit)	1
7	23410011	Body Mount Bracket, 68-74 X-body	2

Hardware included in kit T1712

8	1/2-20 X 3"	1/2" x 3" Bolt, Hex Head	2
9	1/2-20X2.75	1/2" x 2-3/4" Bolt, Hex Head	2
10	7/16USS FW	7/16" USS Flat Washer	8
11	1/2AN	1/2" AN Flat Washer	4
12	1/2-20 NUT	1/2" Nylock Nut	4

Hardware included in kit 1719

13	7/16NYLOCK	7/16" Nylock Nut	8
14	7/16AN	7/16" AN Flat Washer	4
15	7/16 SAE FW	Rear Sway Bar Washers	4

Hardware included in kit T1722

-	7/16AN	7/16" AN Flat Washer	4
-	7/16NYLOCK	7/16" Nylock Nut	4
16	T1722	3" U-bolt, Stainless Steel	2
17	ND907A1	1/8oz Tube of Anti-Sieze	1

Parts Not Pictured

18	9.11108	Grease Pack	2
19	n/a	Instruction Set	1

