

# HOTCHKIS HOTCHKIS SPORT SUSPENSION

2255 SPORT SWAY BAR SET  
62-69 CHRYSLER B-BODY



This installation may require drilling new mounting holes in the frame for rear sway bar and welding for the front. Please read the instructions carefully to avoid unnecessary drilling.

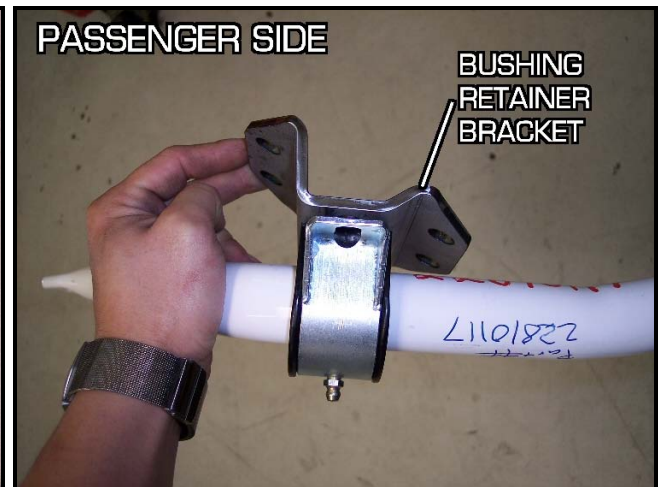
## INSTALLATION OF HOTCHKIS PERFORMANCE FRONT SWAY BAR

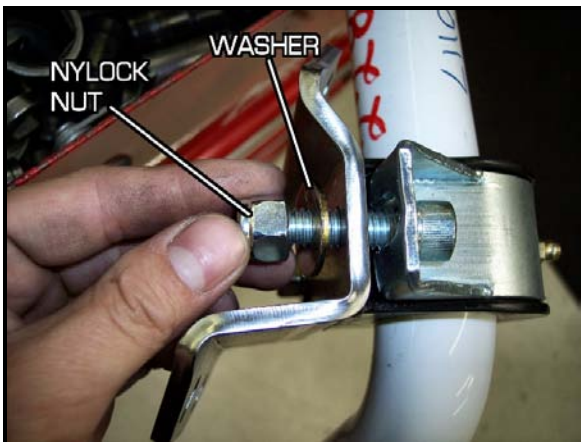
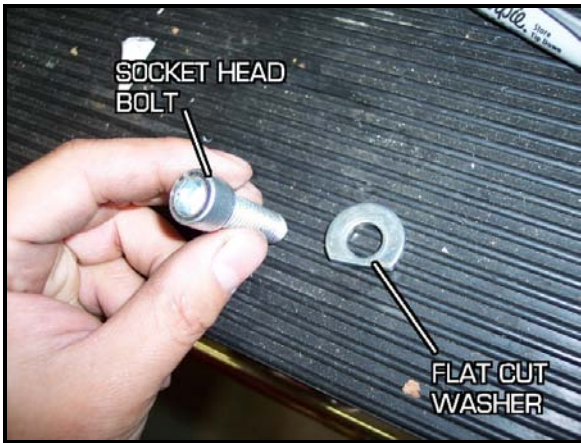
1. This installation should be done on a 4 post alignment rack or drive on ramps. It is important that the car's weight is on all 4 wheels in order to ensure that the suspension is in normal static ride height position.
2. Begin by unbolting the metal radiator brace at the front of the vehicle that connects to the radiator support to the front of the K-member. Please retain the radiator brace and the stock hardware for reinstallation.
3. Unbolt and remove the stock end links connecting the old sway bar ends to the lower control arms.
4. Unbolt and remove the stock bushing retainer brackets. The bushings are trapped in the brackets and should be removed with the brackets and stock sway bar. The entire assembly should just drop out when unbolted.

5. Our main objective is to find out where you will be welding on the Hotchkis bushing retainer brackets. In order to do that you will have to mock up where the bar is going to be positioned. We will first attach the bar to the end links. Raise the Hotchkis front sway bar into position on the car. Install the end links that connect the lower control arm to the sway bar ends. See picture. Snugly tighten, but do not make too tight.

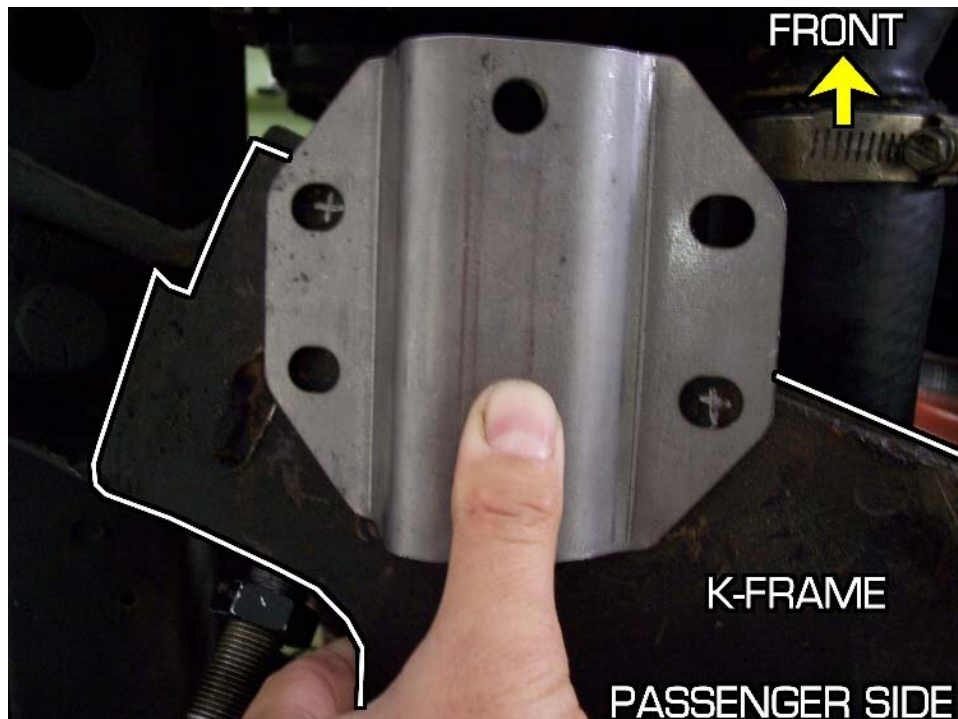


6. Once the end links are attached, install the bushings and brackets to the bar. Make sure to apply the included silicon grease. You will also need to install the new Hotchkis bushing retainer bracket onto the bushing bracket as shown in the picture. Attach the driver and passenger side D-Shaped bushing & bracket and position them as outboard as possible.

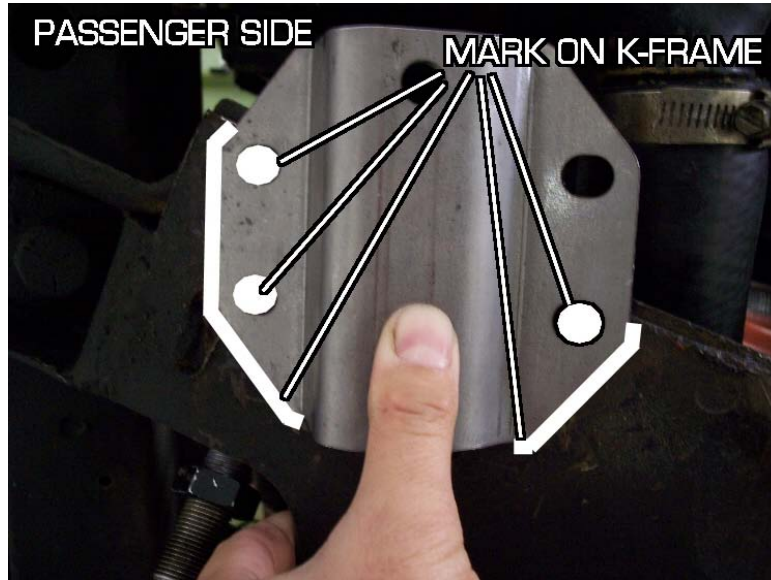




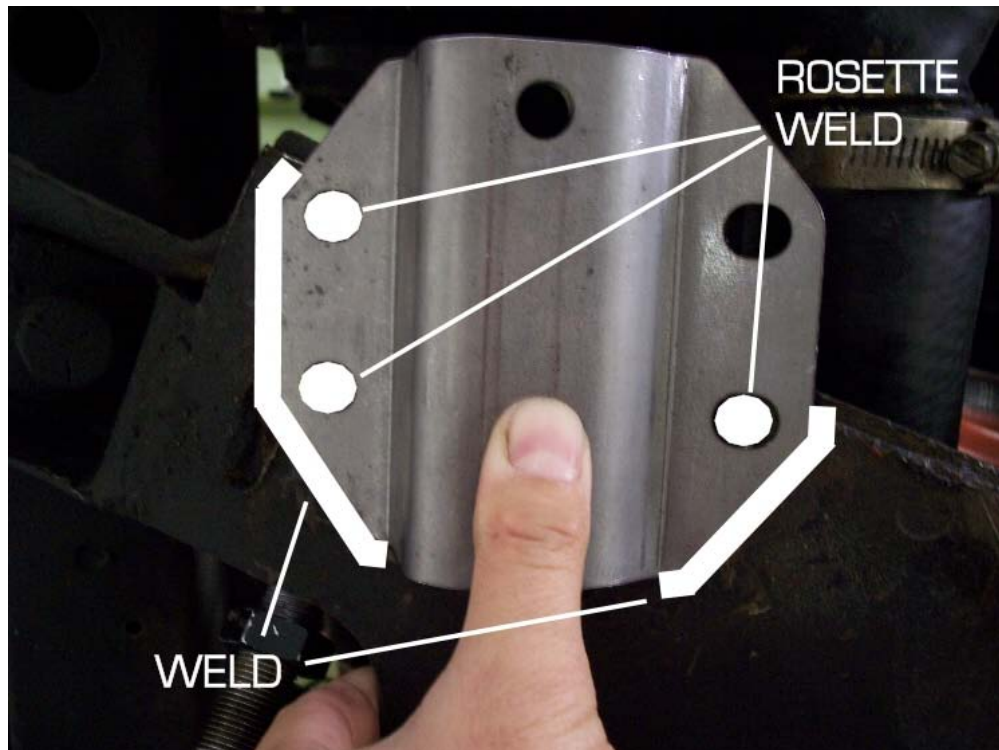
Now you can raise the bar up until the bushing retainer brackets mate flush to the k-frame bottom surface. Make sure the center section of the sway bar is not contacting any part of the k-frame. Bushing retainer bracket should be positioned similar to the picture below. The white outline depicts the k-frame. (Picture shows bracket disconnected from the sway bar for clarity purposes).



Use a paint marker to mark where the holes are as well as the outer edges that mate with the k-frame. (Picture shows bracket disconnected from the sway bar for clarity purposes.)



7. Once the k-frame is marked, use an angle grinder with a sand paper attachment to remove all of the paint and grime on the areas previously marked. What we are doing is cleaning the area that is going to be welded. You will also need to sand the bushing retainer bracket in the mating areas too.
8. Reposition the bar back onto the k-frame so the retainer bracket is sitting flush with the k-frame. A jack does a good job of holding the bar in place for you. You will now weld the bracket to the k-frame. The best way to start is to tack weld a couple of spots around the bracket. Once the brackets are secure, unbolt the D-shaped bushing bracket and end links to get the bar out of the way. Finish welding a bead as shown in the picture below. Also weld up the holes creating a rosette weld.



9. Use some black spray paint to coat the exposed metal

10. Reinstall the end links and D-shape bushings & brackets. Fully tighten all hardware.

11. Reinstall the stock radiator brace.

You are finished with the front sway bar installation.



# HOTCHKIS HOTCHKIS SPORT SUSPENSION



## INSTALLATION OF HOTCHKIS PERFORMANCE REAR SWAY BAR

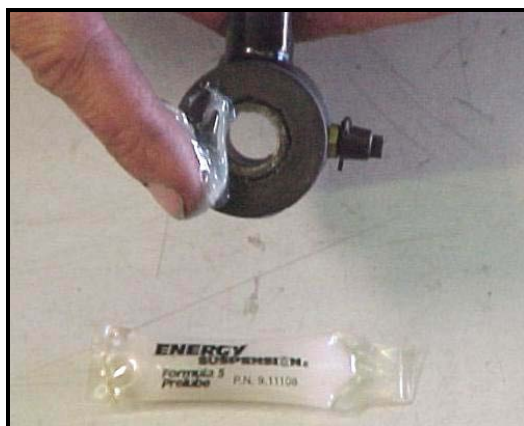
- 1) Securely block the front wheels of the vehicle. Jack up the rear of the vehicle and place it on jack stands. Place the jack under the differential housing on the axle to raise the axle to the vehicle ride height for installation of the sway bar.
- 2) Locate the hole on the bottom of each side of the frame behind the rear axle. Use the triangle mounting brackets provided to locate and mark on the frame the location of the second hole.



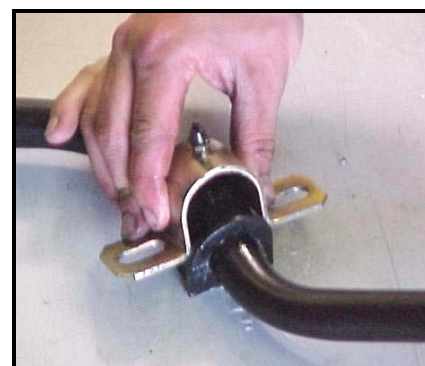
- 3) Use the mark made on the frame to drill a 1/2" diameter hole. The studed bracket included in the kit should now drop into place through the two holes in the frame. Use the larger hole in the frame to slide the bracket into the frame.



- 4) Use the grease pack provided with the kit to apply a thick coat of grease to the sides of the dog bone end link bushings. Attach the end links to the sway bar on the outside of the sway bar ends. Install the hardware with the bolt head towards the outside of the frame. The larger washer should be against the bushing and the smaller washer will be to the inside against the sway bar. See the picture below for assembly.



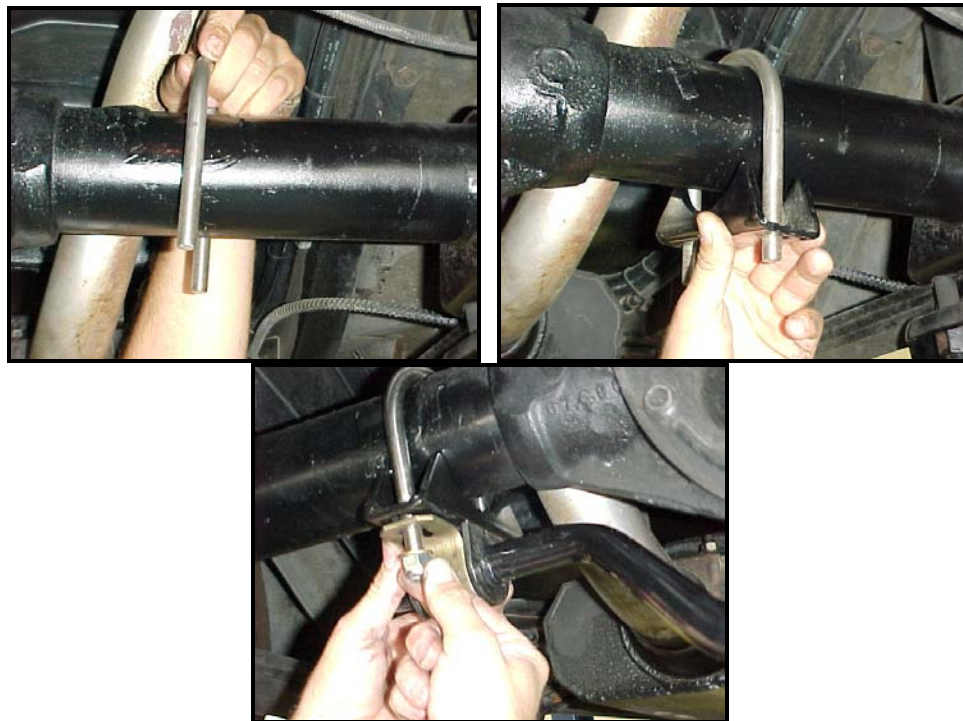
- 5) Use the grease pack to also apply a thick coat of grease to the insides of the sway bar bushings. Place the bushings over the bar with the split of the bushing facing towards the rear. Install the bushing retainer brackets over the bushings.



- 6) Attach the triangle brackets to the stud plates on the frame. Tighten the attaching hardware, as this is easier to do before installing the sway bar. With the brackets attached to the frame the bar can be lifted into place. Connect the end links to the brackets. The sway bar should be hanging loosely from the brackets at this point.



- 7) Place the u-bolts over the rear axle. Slide the axle brackets over the ends of the u-bolts with the curved side up against the axle. Rotate the bar into position and slide the bushing retainer brackets over the ends of the u-bolts. Start the nylock nuts onto the ends of the u-bolts to loosely hold the bar to the axle.



- 8) Use the tube of anti-seize included with the kit to apply a small amount to each set of threads on the u-bolt. **DO NOT** tighten the nylock nuts without using anti-seize! You could ruin the nuts or snap the u-bolt without it.



- 9) Make certain that the rear axle is at normal ride height to establish the proper orientation of the sway bar. Tighten the u-bolt hardware to mount the sway bar brackets to the axle. At this point you can now adjust the stiffness of the sway bar. Change the end link mount to the hole in the end of the bar to change the stiffness of the bar.





In the above picture the hole to the left is stiffer and the hole to the right is softer. Check that all attaching hardware is tight. Make certain the zerk fitting caps are covering the grease fittings. Lower the car from the jack stands and you're done!



**CHECK ALL HARDWARE** after the first five miles.

**IMPORTANT** Grease your sway bar bushings at least once a year (every 15,000 miles) to help prevent squeaking. Use a non-lithium based grease only to lube the bushings. Lithium based grease can wash out with water. If excessive squeaking occurs the bushings may be dry and need servicing or replacement.



SEE NEXT PAGE FOR PARTS LIST!

**69-69 Chrysler B-body Sport Sway Bar Kit, Parts List**  
**P/N 2255**



	Hotchkis P/N	Item Description	Quantity Per Kit
1	22810117	62-69 Chrysler B-body Front Sway Bar, Black Powder Coated	1
2	5638.01	1-3/8" Greasable Sway Bar Bushing, Truck Style	2
3	23090074	Greasable Sway Bar Bracket, Truck Style	2
4	98118G	End Link Set with Hardware (contains two end links)	1
5	23410117	62-69 Chrysler B-body Frame Bracket, Black Powder Coated	2
6	T2221	Rear Frame Bracket Kit (contains two triangle brackets)	1
7	25210037	6" Long "Dog Bone" End Link Kit (contains two end links)	1
8	5340G	1" Greasable Sway Bar Bushing, Car Style	2
9	T2211	Rear Axle Sway Bar Mounting Kit (contains axle brackets)	1
10	T1722	3" U-bolt Kit (contains two U-bolts & hardware)	1
11	22910117	62-69 Chrysler B-body Rear Sway Bar	1
12	15.12.06.39	Greasable Sway Bar Bracket, Car Style	2

**Items Not Pictured**

13	23990117	Welded Stud Plate 2.87" Kit (contains two stud plates)	1
14	T1712	Dog Bone hardware Kit	1
15	-	-	1
16	n/a	Instruction Set	1

