

## *2236R Sway Bar Installation Instructions*

Thank you for your purchase of this Hotchkis Performance product. Your stabilizer bar set was designed with the performance and durability you've come to expect from Hotchkis Performance.

### *Rear Sway Bar Installation:*

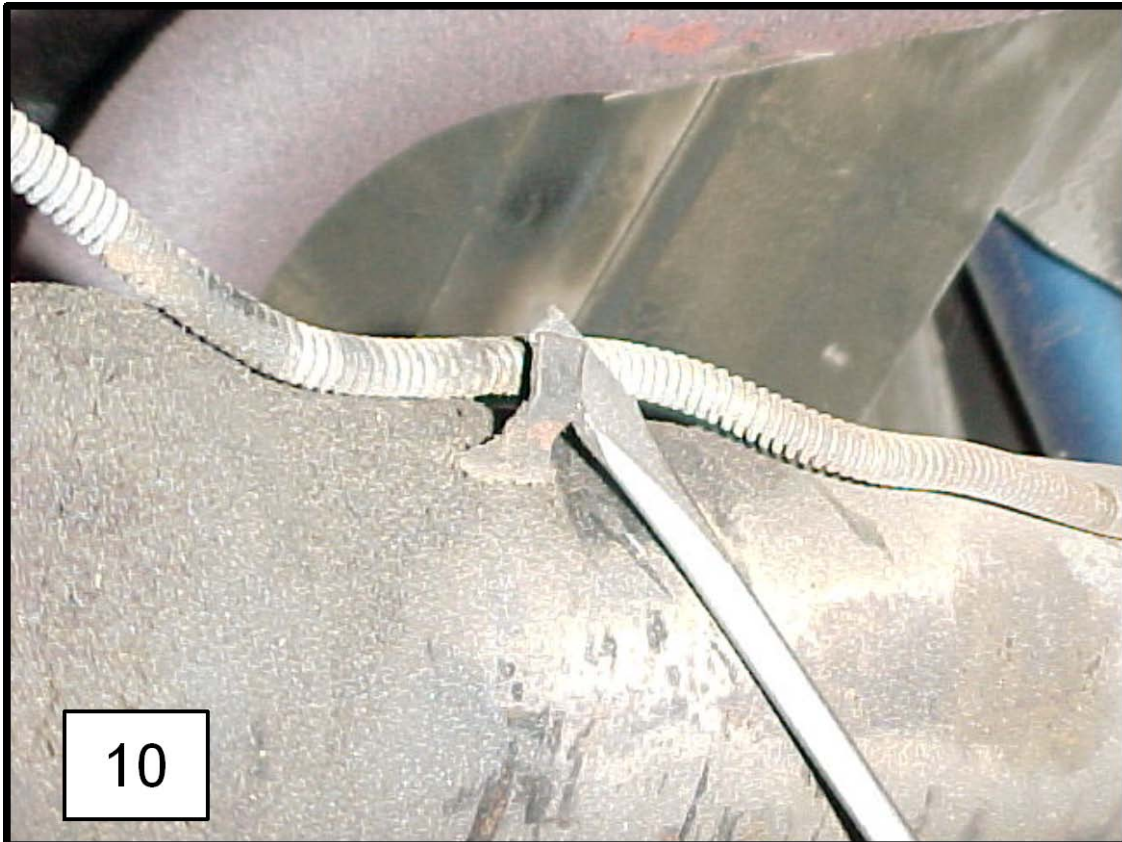
- 1R. Jack up the vehicle and properly support with jack stands or lift jacks. Make sure the rear end is supported with the vehicle's load on the leaf springs. This is to ensure you install the rear bar in the proper position.
- 2R. Take the bushings and grease the inner surface with the included white silicon grease.



- 3R. Install the bushings on the bar. (5) Place the bracket over top of the bushing. (6)

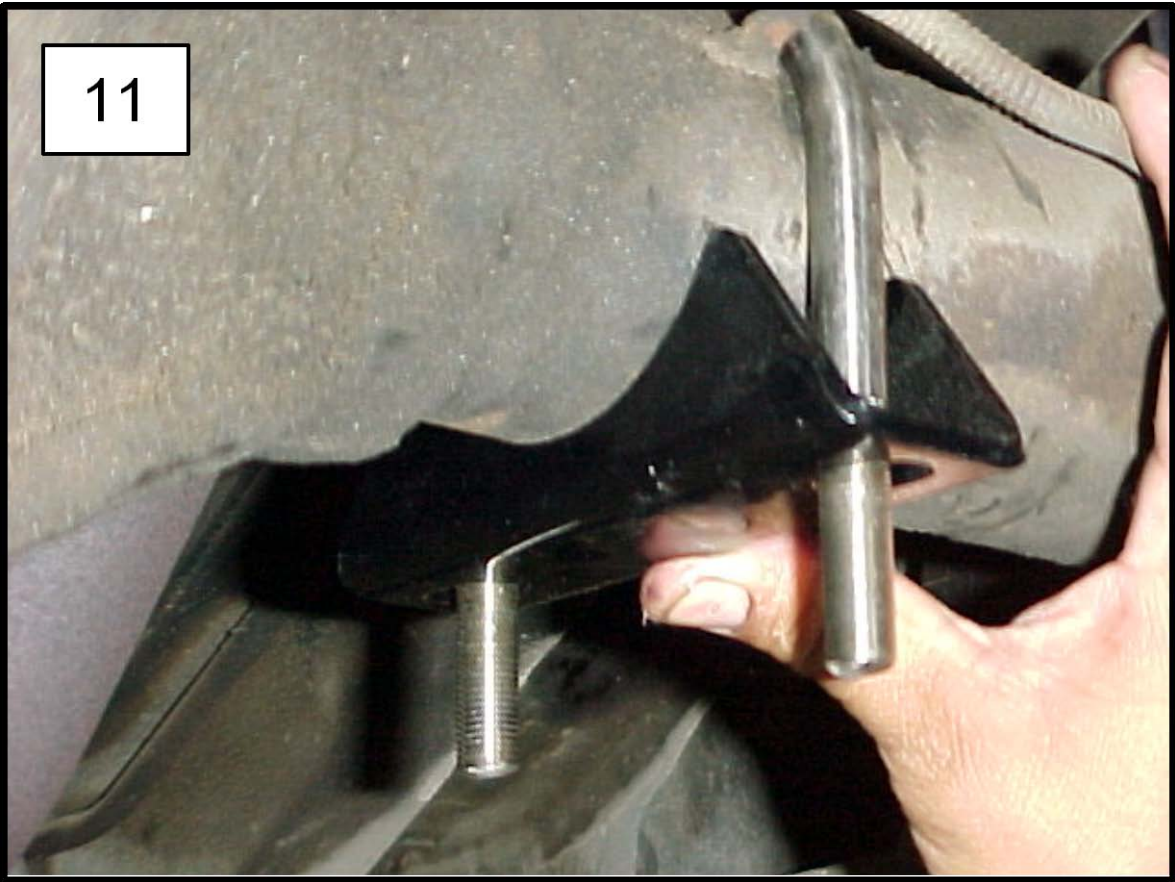


- 4R. Take the sway bar assembly and hold it up under the rear end of the car. The arms will point forward and the dog bone end links point up. Check for exhaust clearance in this area. You may have to have the exhaust pipes re-bent to provide clearance for the new sway bar assembly. Any competent exhaust shop can handle this modification easily.
- 5R. After you determine there's enough clearance for the bar, note the approximate location of the sway bar axle bushing.
- 6R. Take a screwdriver and carefully pry up the brake line to allow the U-Bolt to drop down over the axle. (10)



- 7R. Install the U-Bolts on the axle and slip the axle bracket over the U-Bolt on the bottom side of the axle. Use masking or duct tape to secure them. Place the sway bar assembly under the axle and slip the U-bolt legs through the sway bar brackets. Place washers and nylock nuts on the U-Bolt. Snugly fasten the nylock nuts a bit, but do not fully tighten at this time.

11



8R *Undo Frame Rail Lines*

We are going to be mounting the dog bone endlinks to the frame rails. However, we first need to access the side of the frame rails. We will need to undo the fuel/brake lines that are mounted to the rails.

The driver side has a brake line and vent line that is mounted to the frame rail. Undo the line tabs as shown in the picture below.



The passenger side has the fuel line mounted to the frame rail. Undo the line tabs as shown in the picture below.





9R *Install Frame Rail Reinforcements*

We will be installing reinforcement plates onto the frame rails. This will require drilling two  $\frac{3}{4}$ " holes for through each frame rail.

Start on the passenger side frame rail. The hole that was used to hole the line tab is in the same position as one of your holes. (see picture) Use one of the reinforcement plates as a template to mark out the other hole.





Drill out the  $\frac{3}{4}$ " hole only on the inner side of the frame rail. Do not drill through both walls of the frame rail. We found that a unibit works best.

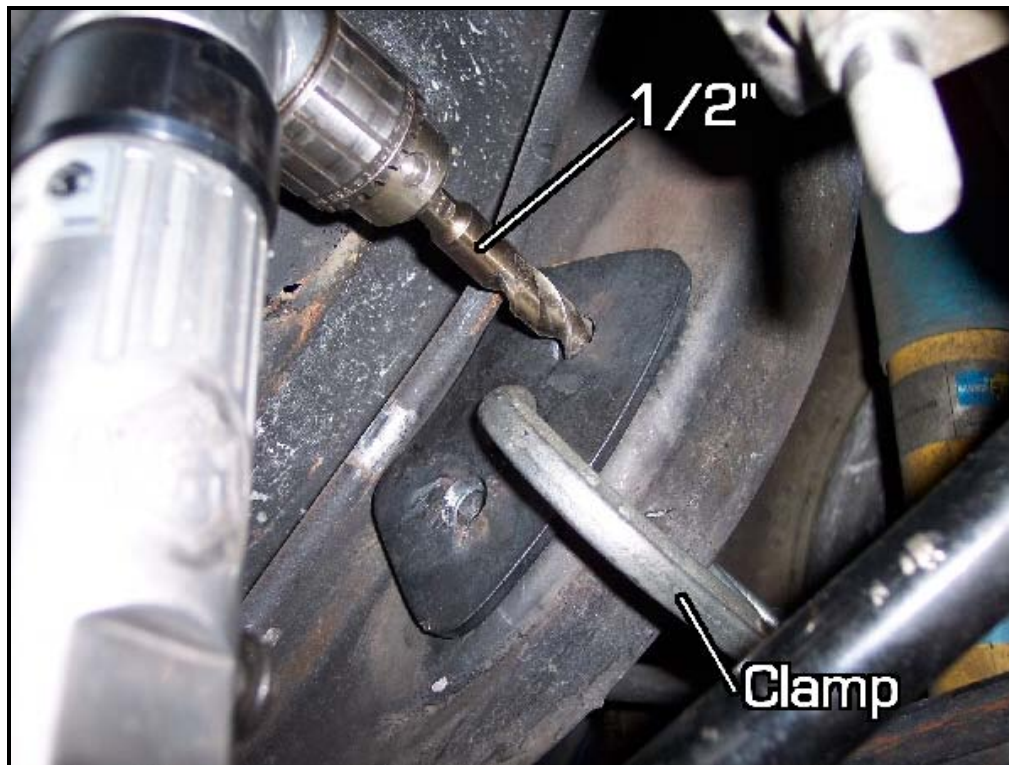






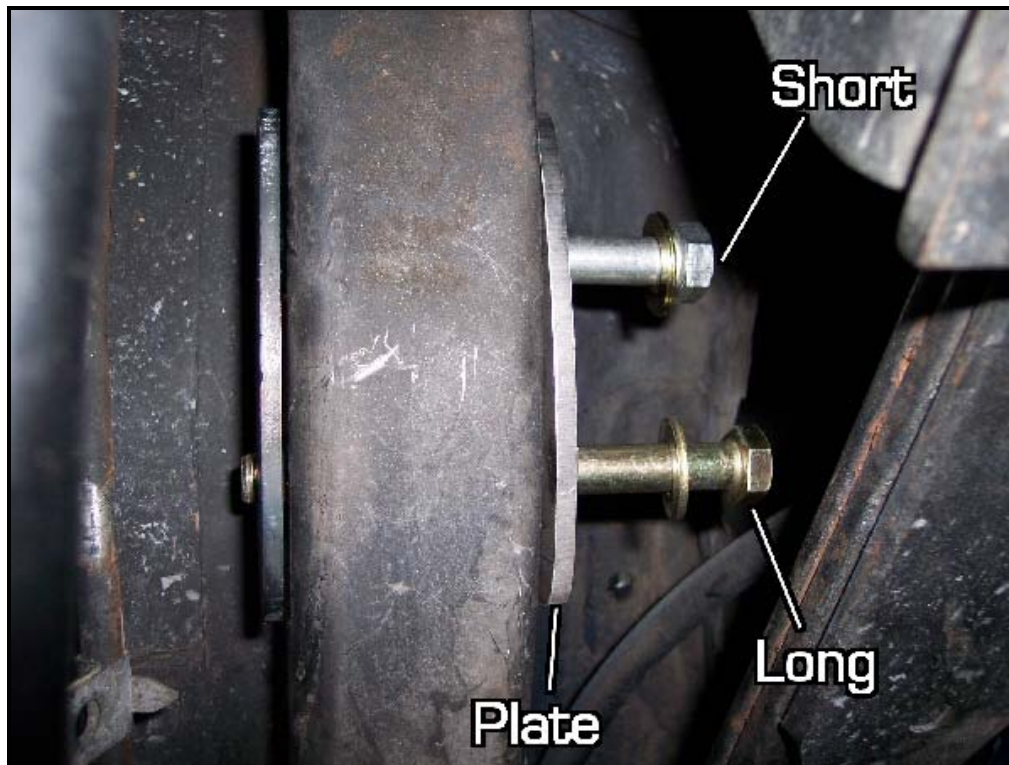
Insert the reinforcement plate with the 2 tubes welded to it into the frame rail. Use a vise clamp to secure the plate onto the frame rail. Drill the outer wall of the frame rail with a  $\frac{1}{2}$ " drill bit. The reinforcement tubes will act as a guide for you to drill. So when you are finished, you will have two  $\frac{3}{4}$ " holes on the inside of the frame rail and two  $\frac{1}{2}$ " holes on the outer side of the frame rail.





Remove the vise clamp and insert 1 short bolt w/ washer and 1 long bolt w/ washer from the outside of the frame rail. (hardware kit #1757) Make sure to add the other reinforcement plate to the outside before you insert the bolts through the frame.





Install a washer and a nut to the top (shorter) bolt. Do not fully tighten this bolt at this time. (hardware kit #1757)





Grease up your new dog bone end links with the provided grease. Install the dog bone on the bottom (longer bolt) with the grease fittings pointing rearward.



Install the line bracket onto the long bolt and install a washer and nut. Do not fully tighten at this time. (hardware kit #1757)



Line up the mounting tab with the line bracket you just installed. Use the provided 5/16" bolt and washer to secure the mounting tab to the line bracket. (hardware kit #1757) Make sure the 1/2" Nut is not too close to the fuel line.





Fully tighten both short and long bolts completely.

You're given new hardware for attaching the dog bone end links to the sway bar. Use the bolts, nuts, and washers from the **#T1712** hardware kit.





Once the passenger side is completely mounted together, you can now figure out where the other frame rail reinforcement plate goes on the driver side. Mock up the driver side dog bone end link onto the sway bar and mark where the bottom hole should be. Again, use the reinforcement plate as guide to mark the upper hole. Drill the holes in the same manner as before.

You can remove the mounting tabs that are no longer in use.

