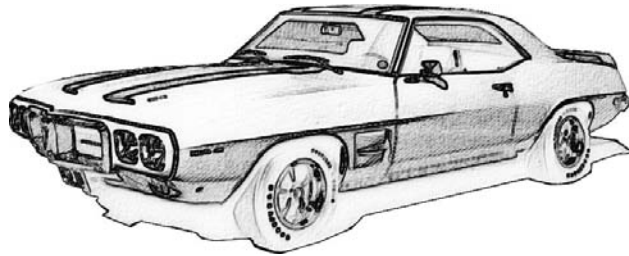


2207F Anti-Roll Bar Installation Instructions



Thank you for your purchase of this Hotchkis Performance product. Your stabilizer bar set was designed with the performance and durability you've come to expect from Hotchkis Performance.

Note: Please read the entire installation instructions before starting. Having the right tools will ensure a smooth install process.

FRONT BAR INSTALLATION

Removing Stock Anti-Roll Bar

1F. Support the vehicle on jack stands, and remove the front wheels.

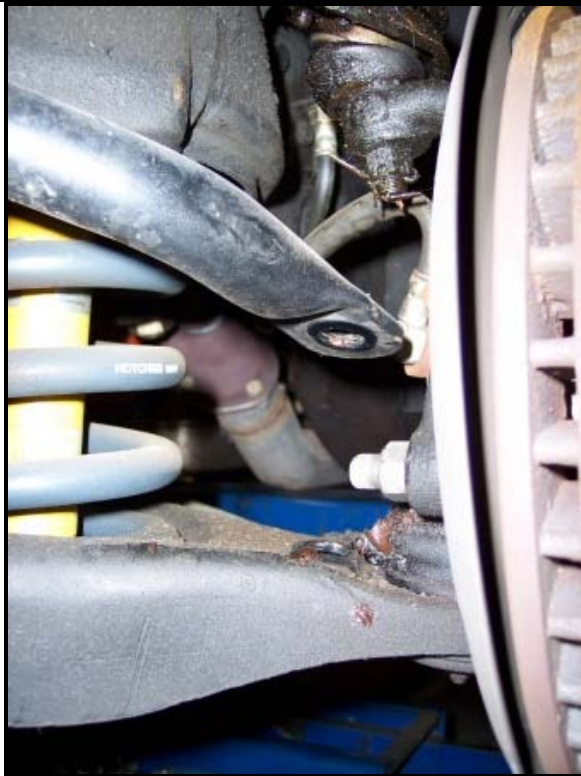


2F. Look at the current bar installation and note the position of the anti-sway bar.

3F. Loosen, but do not remove the front bushing bolts.



4F. Remove the endlinks from the sway bar and lower control arms.



5F. Completely remove the bolts from the frame. Retain these bolts for reinstallation.



6F. Turn the steering all the way to the LEFT and remove the stock bar through the DRIVER side wheel well.

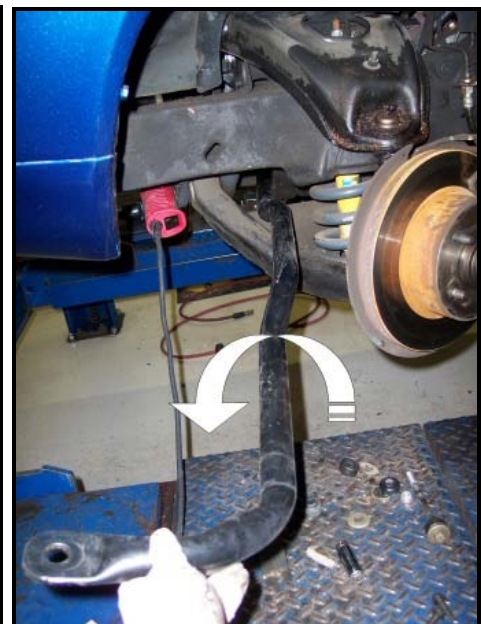
Observe the following pictures for the removal procedure.

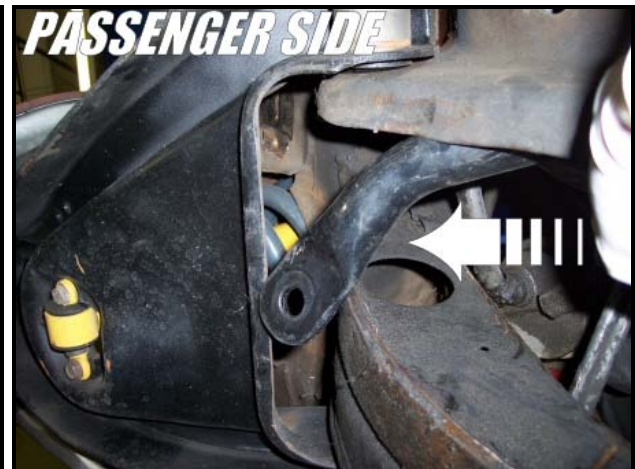




Installing New Hotchkis Anti-Roll Bar

7F. Here's the fun part. The Hotchkis bar has a larger tube diameter, so installing it may take some patience. Please follow the pictures below. They should show you a step-by-step way to install the bar.





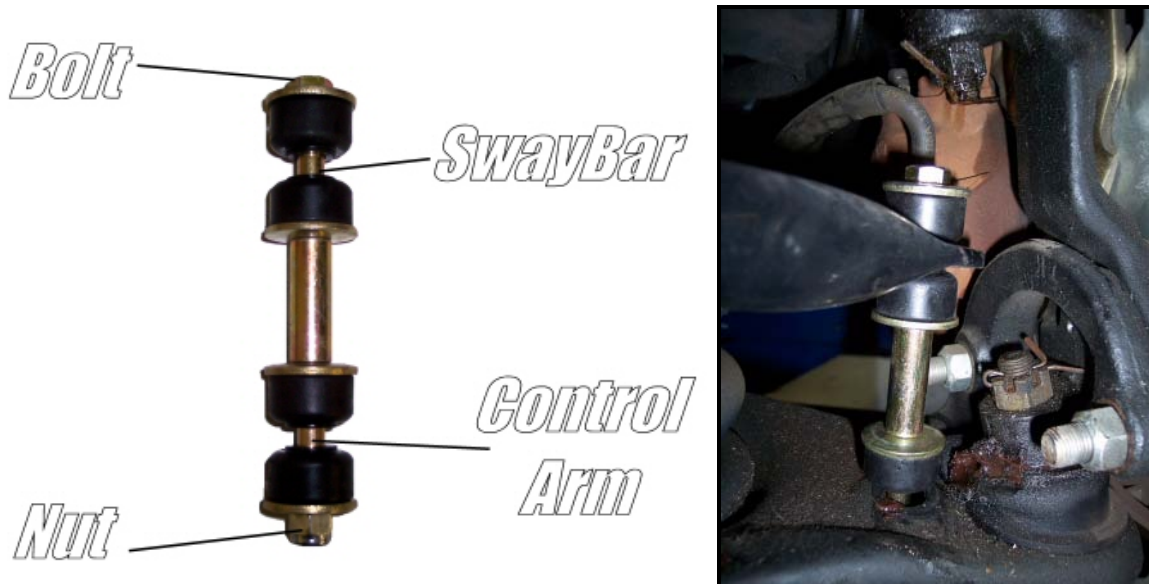
At this point the sway bar will need a little force to get into position. Take your trusty dead blow hammer and hit the anti-roll bar end as shown in the picture below. It won't take too much to pop it into place.



Once the anti-roll bar end is above the lower control arm, you can easily slide it into position.



8F. Once the bar is in place, install the new endlinks but do not tighten them completely.



9F. Using the included white silicon grease, lube the inside of the new 1 ¼" front bushings. *NOTE: the grease can be cleaned up with WD-40*



10F. Install the bushing on the new Hotchkis bar. Make sure the split on the bushing faces the front when the bar is installed in the vehicle. Look at the placement of the original stock bushings on the stock bar for guidance.



11F. Place the greasable bracket over top the bushing and secure them with the stock bolts. You may fully tighten these bolts at this time.



12F. It is best to tighten the endlinks with the suspension at ride height. To achieve this, simply reinstall the wheels and drive the car onto some floor ramps. These can be found at your local auto store. Now, with the car at ride height and on the floor ramps you can crawl underneath the car and fully tighten the endlinks. Tighten the endlinks until the bushings are squeezed just enough that their diameter is just larger than the supporting washer.



You are now finished installing your new Hotchkis Anti-Roll bar.