

PIVOT BUSHING KIT

21390

63 - 72 GM C10 Pickup

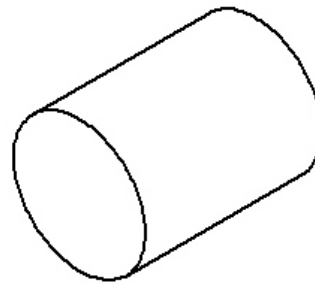
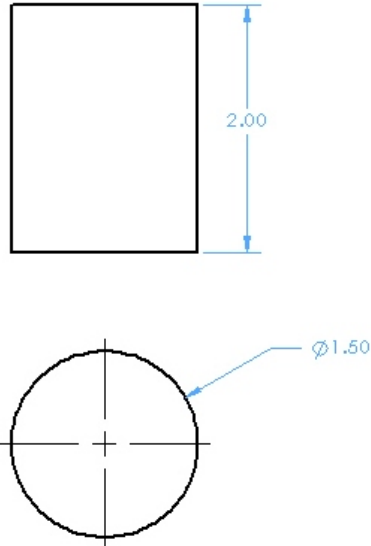


IMPORTANT: PLEASE READ THE ENTIRE INSTRUCTION MANUAL BEFORE STARTING THIS INSTALLATION.

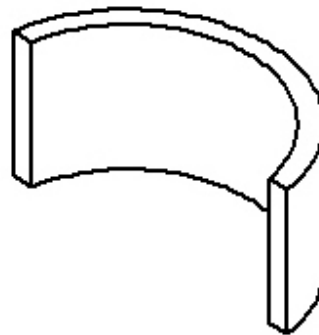
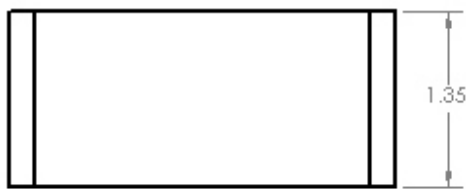
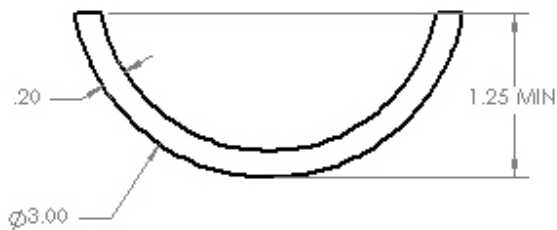
Recommended Tooling for Press

The following list is the recommended sizes for tooling to press out/in the pivot bushing

- 1 ***Push Bar (qty 1)***
Ø1.50" x 2.00" – This tool will push the old bushing canister out.

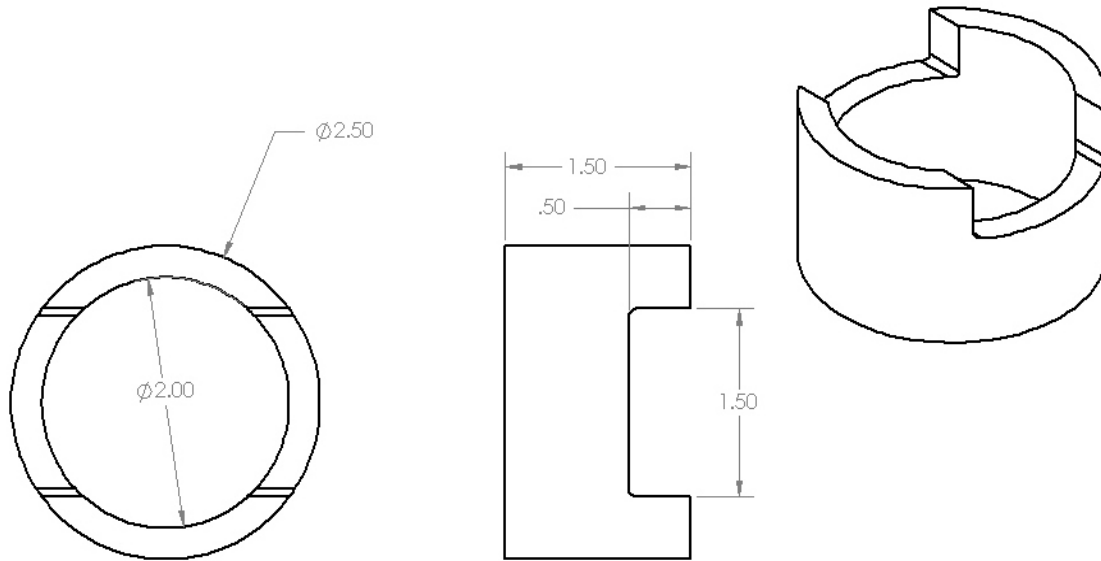


- 2 ***C Ring Support (qty 2 halves)***
Ø3.00" x 0.02" x 1.35" Cut into two halves. – This tool will be sandwiched between the two truck arm halves. They support the truck arm tabs and prevent them from bending.



3 ***Back Support (qty 1)***

OD $\varnothing 2.50$ " x ID $\varnothing 2.00$ " x 1.50" with a slot cut away down the middle on both opposite walls measuring 1.50" wide x 0.50" deep. – This tool will reside on the bottom of the arm opposite the press. It's job is to support the truck arm while leaving room for the bushing canister to press through it.



Note: All tool designs are suggestions. This installation does require the installer to have knowledge and experience with a press and tooling. There are many different methods of removing these canisters and this is just one of them.

Installation of Hotchkis Truck Arm Pivot Bushing

1 ***Raise Vehicle***

Raise the vehicle using a lift or floor jacks. Secure the vehicle with jack stands and/or use chocks for the rear wheels if applicable. Raise the front of the vehicle until the front wheels are off the ground.

2 ***Disconnect Brake Cable***

Disconnect brake cable from truck arm



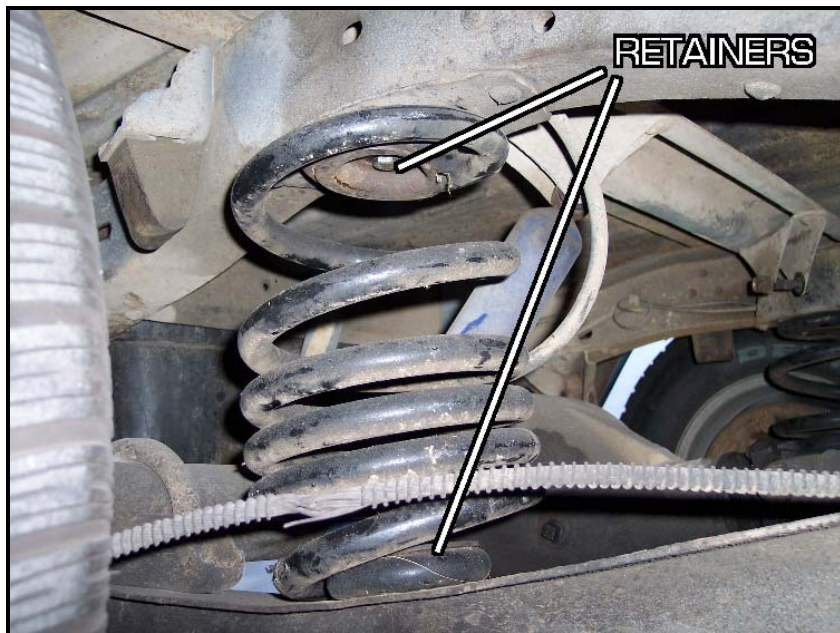
3 ***Disconnect Lower Shock Mount***

Disconnect lower shock mount by removing the two nuts per side. You may need to remove the nut connecting the lower shock mount to the shock.



4 ***Remove Rear Spring***

Each spring has a top and bottom retainer. Undo the bolts that secure these retainers. The spring should be loose and free from the truck. Keep retainers for reinstallation.



5 ***Remove Truck Arm***

Remove truck arm by removing front mount bolt and releasing it from the U-bolts that attach it to the axle. You may have to disconnect the drive shaft bearing mount or the whole drive shaft to gain clearance to remove the bolt. **REMOVE ONE TRUCK ARM AT A TIME.**



6 ***Remove the Bushing Can***

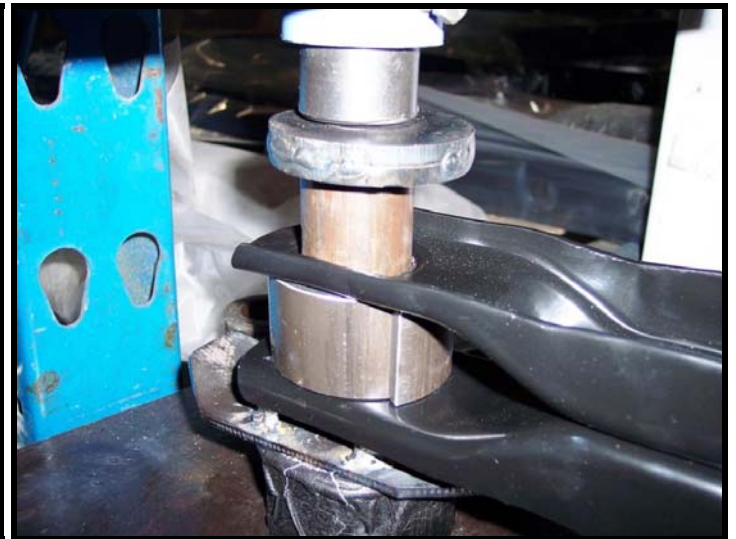
Remove the bushing can with the supplied tools and a hydraulic press as shown in the pictures below.



USE A FLAT PLATE TO START
PUSHING OUT THE CAN



USE THE BAR TO PUSH OUT
THE CAN FULLY OUT



7 ***Press Fit the Metal Can into the Truck Arm***

Using a hydraulic press, press fit the metal can into the truck arm. Ensure that the shoulder of the can is on the same side as the can that was removed.



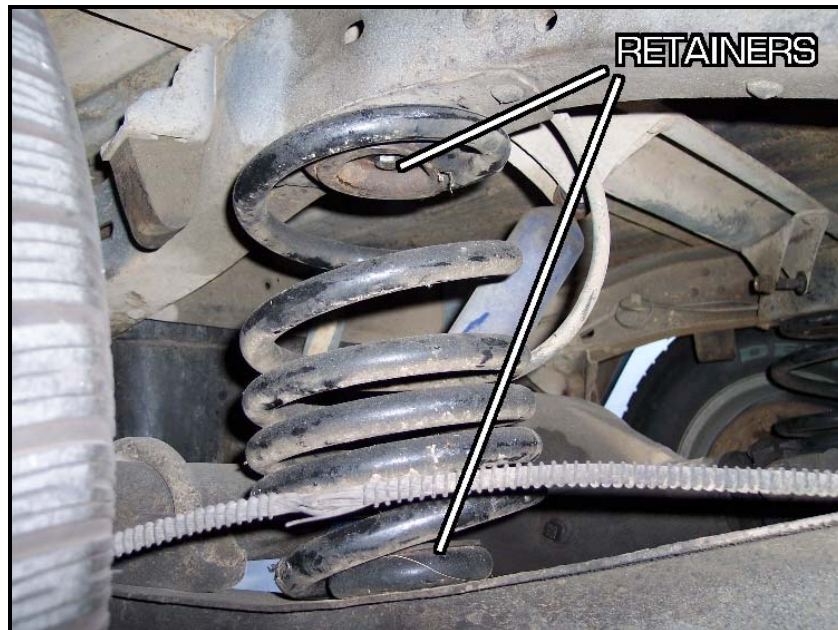
8 ***Install Truck Arm***

Install truck arm by installing front mount bolt ensuring that the misalignment spacers are installed and installing using the U-bolts that attach it to the axle and lower shock mount. Do not fully tighten the nut that is used to connect the shock to the lower shock mount until the car is on its own weight.



9 ***Install Rear Spring***

Install rear spring and secure both retainers.



- 10 ***Reconnect Brake Cable***
Reconnect brake cable from truck arm



- 11 ***Repeat to other side***
Repeat this process to the other side following the same steps
- 12 ***Lower Vehicle***
Lower vehicle on to its own weight
- 13 ***Tighten Shock Mounts***
Tighten shock mount studs while vehicle is at ride height. Double check any loose hardware.