

## 20102

### '68 - '69 Camaro Rear Brace

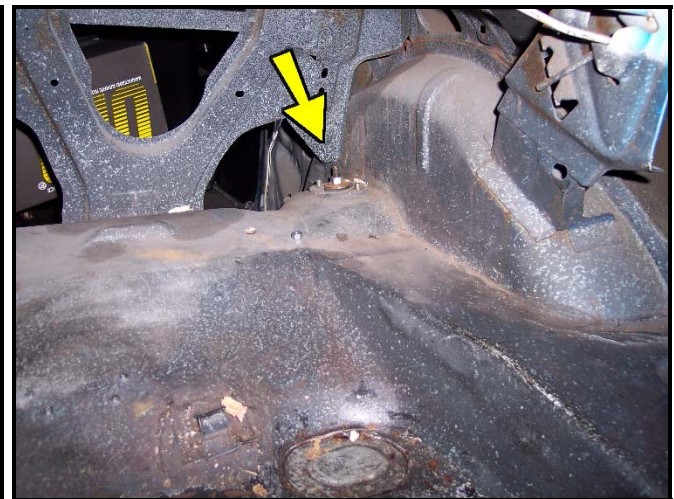


Thank you for your purchase of this Hotchkis Performance product. Your Rear Brace was designed with the performance and durability you've come to expect from Hotchkis Performance.

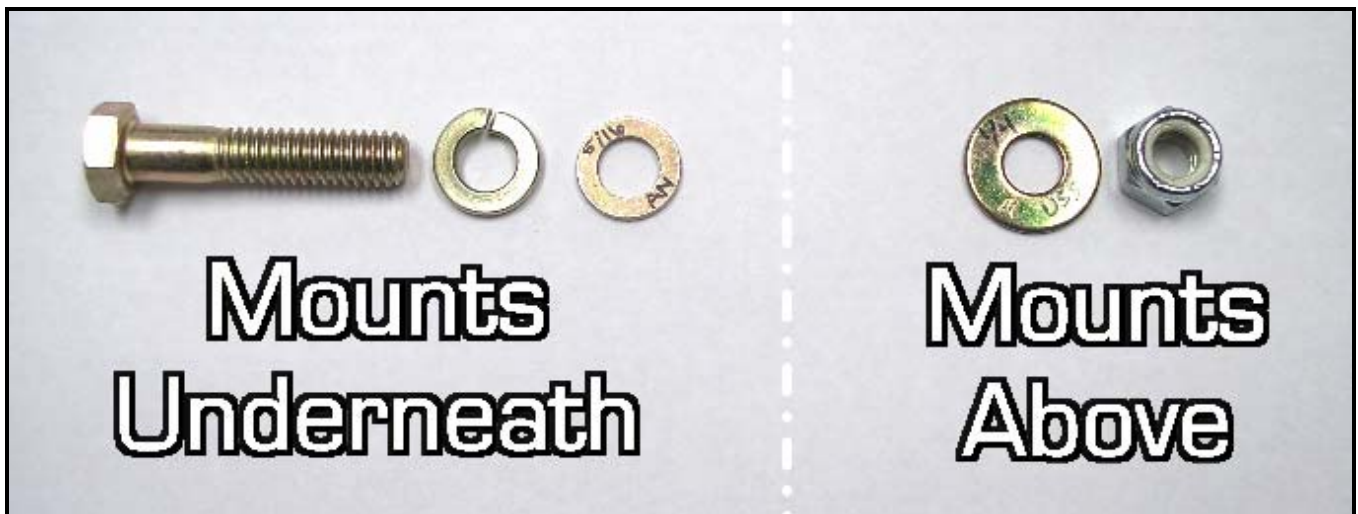
*Note: Please read the entire installation instructions before starting. Having the right tools will ensure a smooth install process. This part will fit staggered oriented shocks only.*

### **REAR BRACE INSTALLATION**

1. Open the trunk and locate the rear upper shock mounts. You may notice that the stock bolt threads protruding from the bottom are not long enough to accommodate the brace. Your Hotchkis kit includes new shock bolts to fix this.



- Undo the 2 upper shock bolts from underneath the vehicle and replace them with the new hardware. Make sure to use a split lock washer and small AN washer on the bolt side.



3. With the longer bolts installed, install the Hotchkis brace onto the studs. The brace will only fit one direction (i.e. the left & right are not interchangeable).



4. Install the supplied washers and nuts onto the studs. Fully tighten all hardware. You are now finished with this installation.