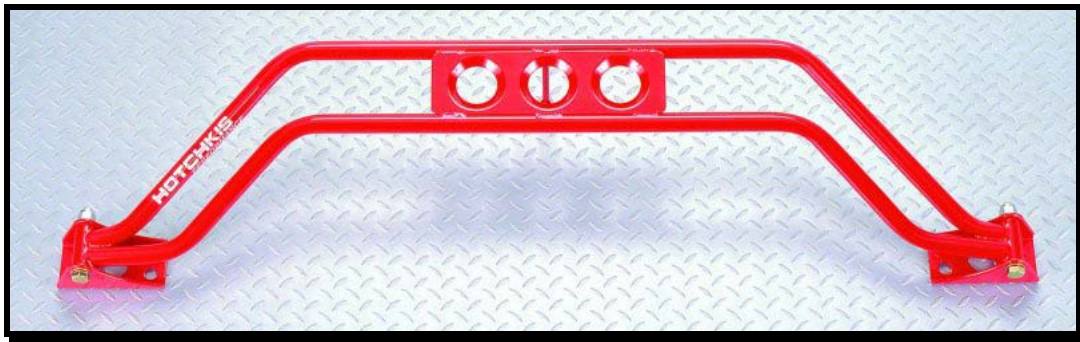


HOTCHKIS **HOTCHKIS** **SPORT SUSPENSION**

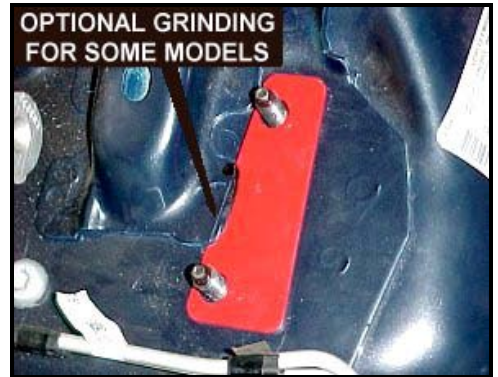
2006 SHOCK TOWER BRACE 93-UP F-BODY CAMARO/FIREBIRD



- 1) Look at the way the shock tower brace is assembled in the box. This is how the brace will be assembled in the vehicle. This installation will be performed entirely in the engine compartment of the vehicle.
- 2) Use a 5/8" wrench and socket to remove the brackets from the shock tower brace.
- 3) Take a 15mm wrench or deep socket and remove the front two upper shock assembly nuts, on each side, from the shock towers. DO NOT touch the rear nut. You only need to remove the front two nuts.

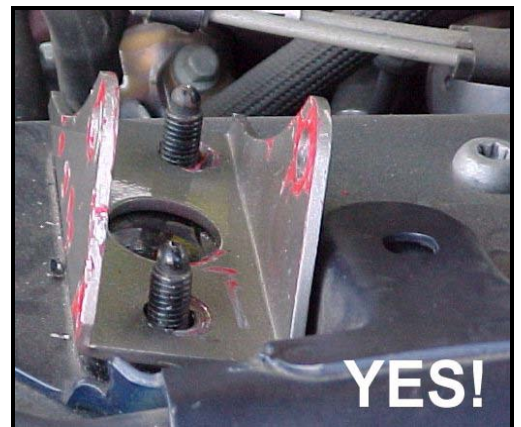
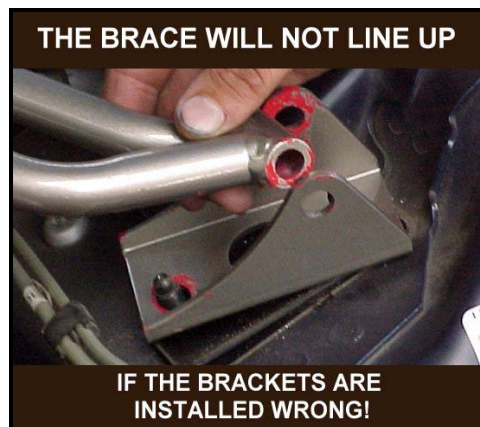
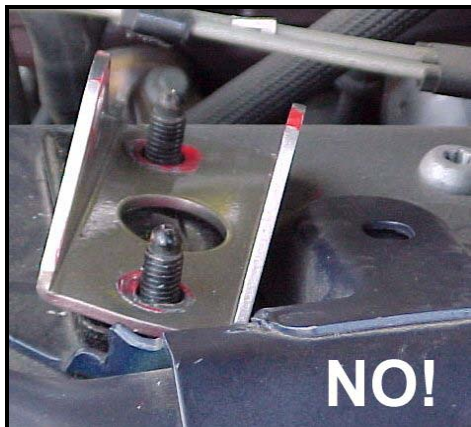


- 4) Take out the spacer plates and set each one over the top of the shock tower studs. These spacers are necessary to allow the brace mounting brackets to sit flat on the shock tower brace.

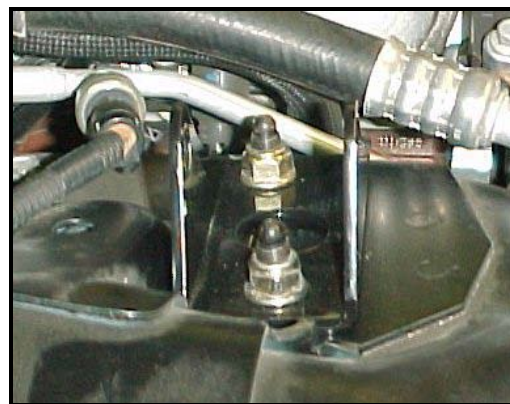


NOTE: On some later vehicles, you may have to grind a small recess to fit the space.

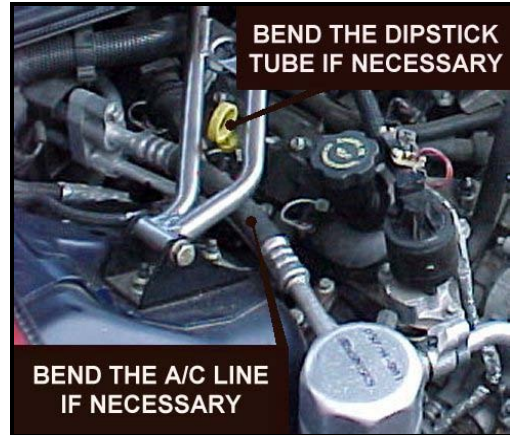
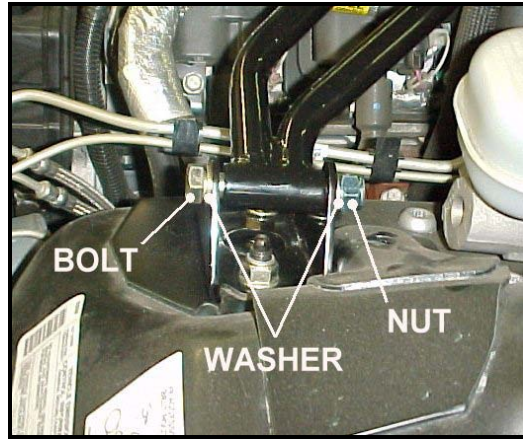
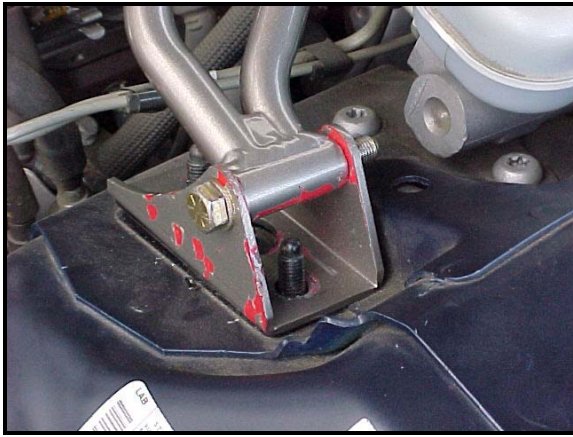
- 5) Put the brackets over the shock tower studs, and install the original nuts. Make sure you have the bracket in the correct orientation. The brackets should be almost parallel with the firewall of the vehicle.



These photos were taken of the left side (driver's) of the vehicle.

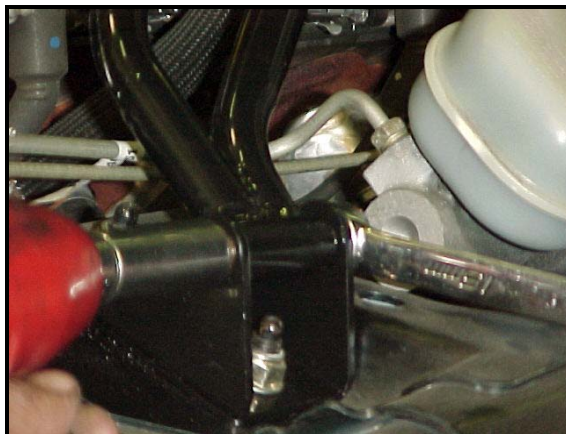


- 6) DO NOT fully tighten the nuts at this stage. Loosely tighten them to secure the brackets. Install the shock tower brace in the brackets. Make sure the offset side of the brace goes back under the windshield. On SS Camaros, this will go behind the air box. Leave the hardware loose at this stage.



NOTE: You may find that the transmission dipstick will come close or contact the brace. This can be bent slightly to clear the brace. The A/C line may also interfere with the positioning of the mounting bracket. If this is the case, then *gently* bend the aluminum part of the A/C line towards the engine until the bracket fits.

- 7) With the bolts through the ends of the brace you may now use a 15mm wrench to tighten the shock tower nuts on the brackets. Make sure you tighten the shock tower nuts first. Then tighten the brace to bracket bolts to roughly 40 ft/lbs of torque using a 5/8" socket and wrench.



- 8) Re-check the hardware and you're done installing the Hotchkis shock tower brace!

