

2010 Camaro SS/V6
20104 Underbody Brace
Installation Instructions



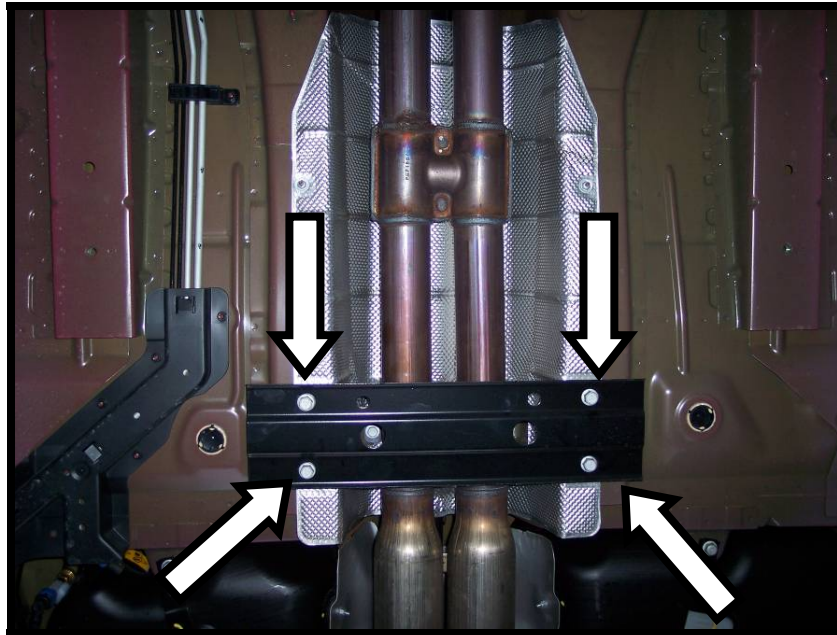
Thank you for your purchase of this Hotchkis Performance product. Your Underbody Brace set was designed with the performance and durability you've come to expect from Hotchkis Performance.

Note: Please read the entire installation instructions before starting. Having the right tools will ensure a smooth install process.

UNDER BODY BRACE INSTALLATION

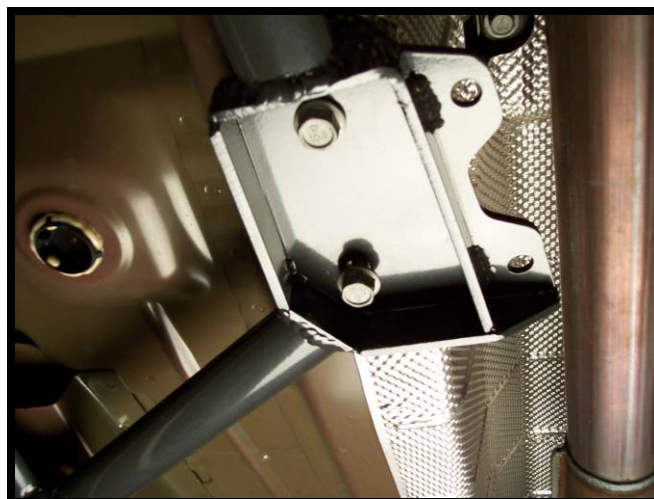
1. **Safely raise the vehicle and Unbolt the stock center plate.**

*NOTE: This is the only stock part that needs to be removed before installation. These bolts **will** be used in the installation.*

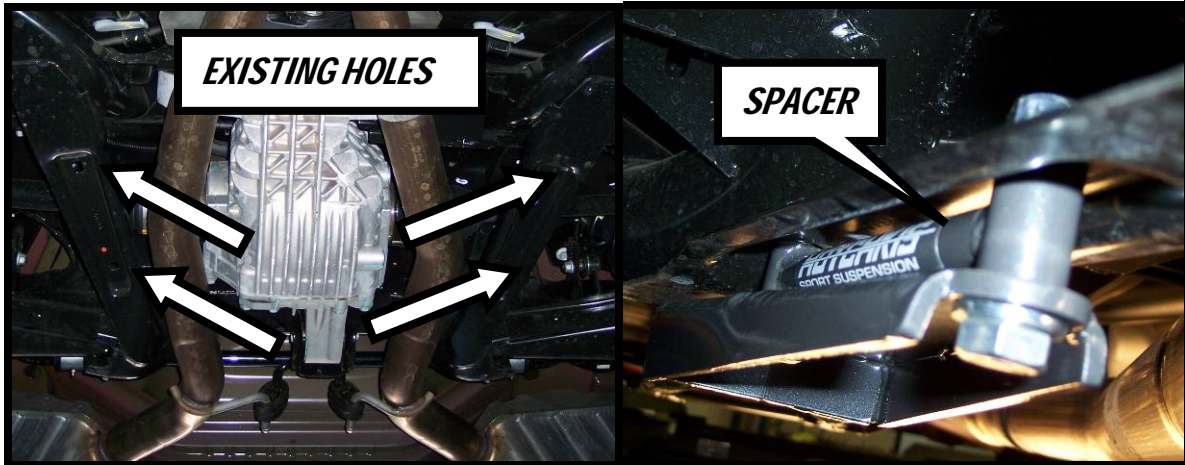


2. **Install either side of the under brace by first placing the center mounting bracket holes where the stock plate was removed from. Use the stock bolts and the included LARGE washers for this bracket.**

NOTE: Do not tighten these bolts yet. Just start the bolts in the holes so that the brace is supported. This will make it easier to bolt up the other brackets.



3. Now bolt the rear bracket onto the rear subframe using the holes that are already existing. Place the provided spacers between the frame and the brace as shown. Install the 12mm bolt from the bottom up and make sure to use the small washers on the head and nut ends.



4. The Front bracket should now line up with its hole. Use the provided hex bolt and LARGE washer on that bracket.

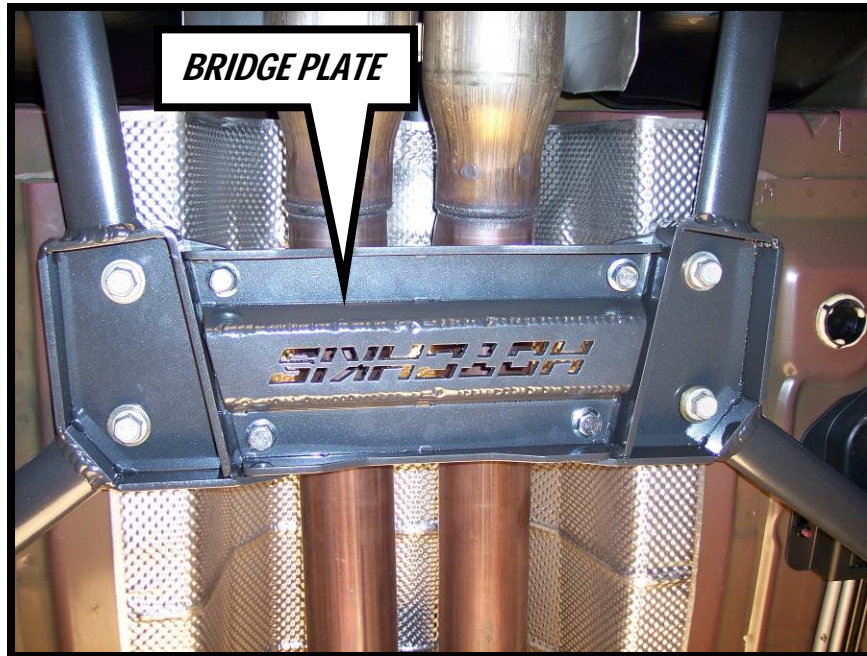
NOTE: Remember, do not tighten any bolts yet. Only start each bolt.



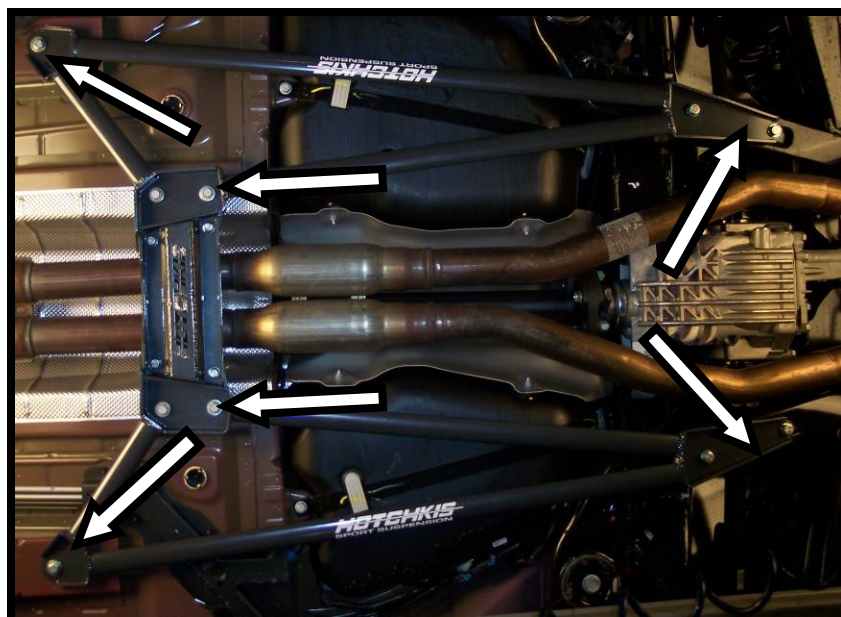
5. Now install the other side following the previous instructions.

6. Once both sides are in, bolt on the center bridge plate using the provided flange bolts. Install the 10mm flange bolt from the bottom up and make sure to use the lock washer on the nut side.

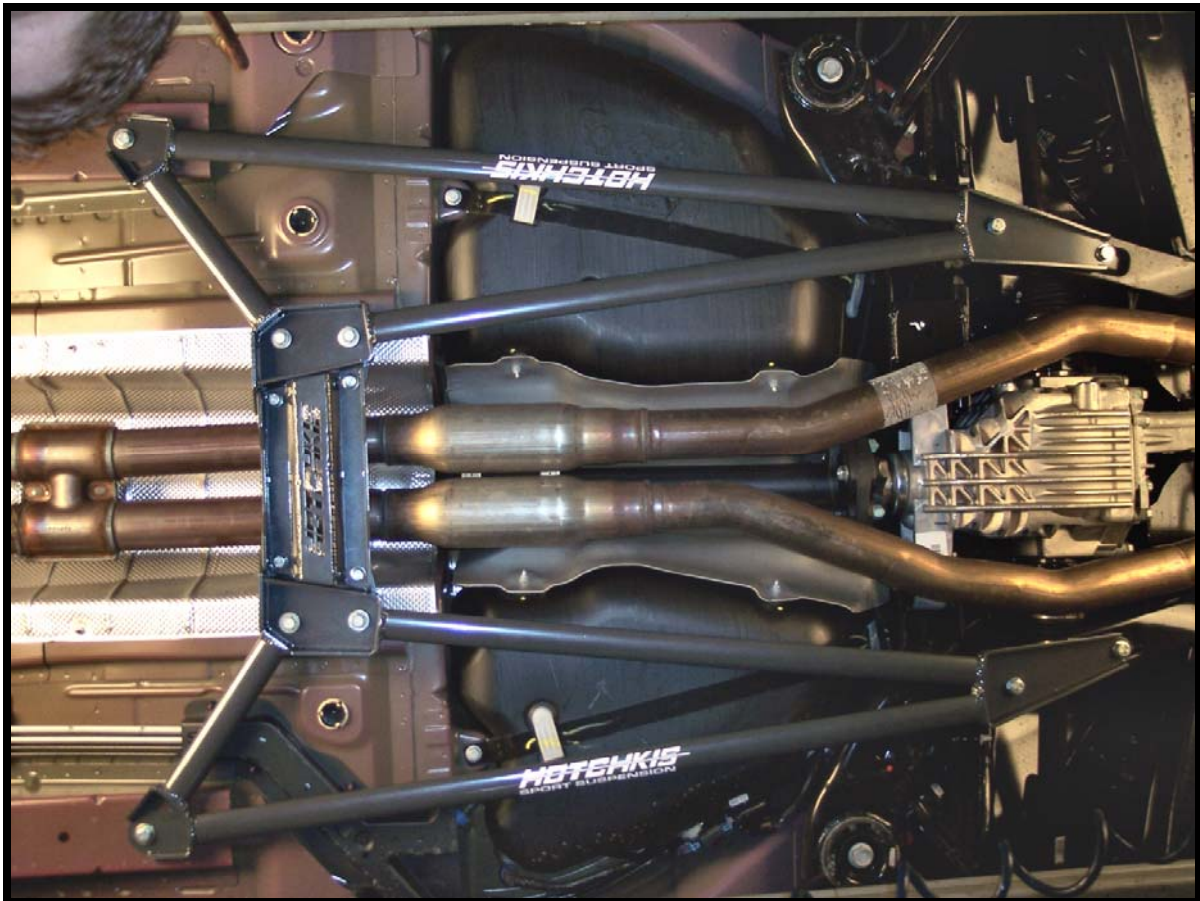
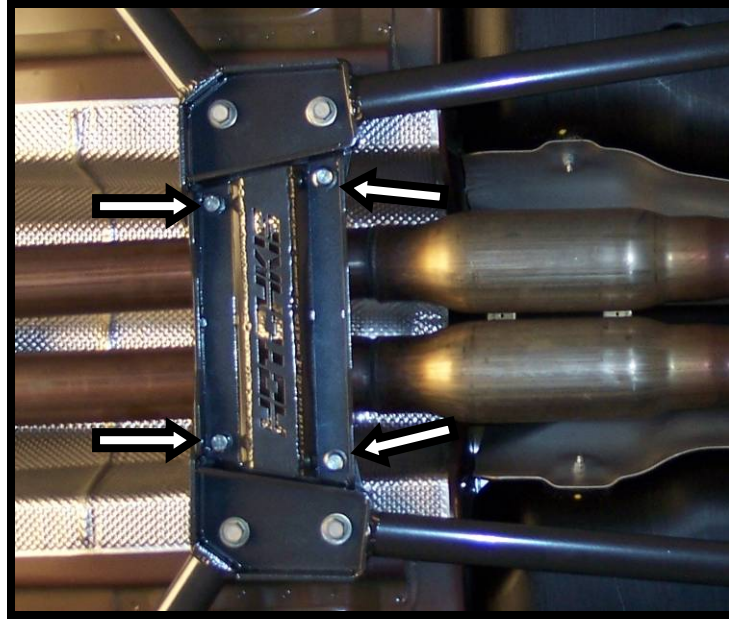
NOTE: Do not completely tighten the bolts yet.



7. Once everything has been bolted on, begin tightening the bolts on the outside main braces. Tighten M10 bolts to 50 ft-lbs and M12 bolts to 90 ft-lbs.



8. With the two main braces tight, now tighten the bridge plate and your under brace is ready for the road. Tighten bridge plate bolts to 50 ft-lbs.



**2010 Camaro SS
20109 Strut Brace
Installation Instructions**



Thank you for your purchase of this Hotchkis Performance product. Your Strut Brace set was designed with the performance and durability you've come to expect from Hotchkis Performance.

Note: Please read the entire installation instructions before starting. Having the right tools will ensure a smooth install process.

Supercharger Note:

If you have the Magnuson supercharger (Magna Charger) installed on your vehicle, you will need to relocate the intercooler reservoir tank using the included Hotchkis bracket.



The hotchkis bracket resembles the Magnuson bracket, but it positions the reservoir down and towards the rear to gain clearance for the brace. Reuse the bracket hardware from the Magnacharger kit. Undo the 3 bolts holding the reservoir to the bracket. Remove the single nut that holds the bracket to the engine. Replace Magnuson bracket with Hotchkis bracket. Reuse the nut to secure the bracket to the engine. Reuse 2 of the 3 bolts that hold the reservoir to the bracket. Proceed to the strut brace installation.

STRUT BRACE INSTALLATION

1. The first step for this installation is to remove the front struts to gain more room to drill our strut brace mounting holes. There are 4 holes total that will be drilled.

Jack the front of the car up and place the car on jack stands. Remove the front wheels.

2. Unbolt the brake line tab from the strut.



***BRAKE LINE
BRACKET***

3. Remove the ABS line from the bracket.



ABS BRACKET

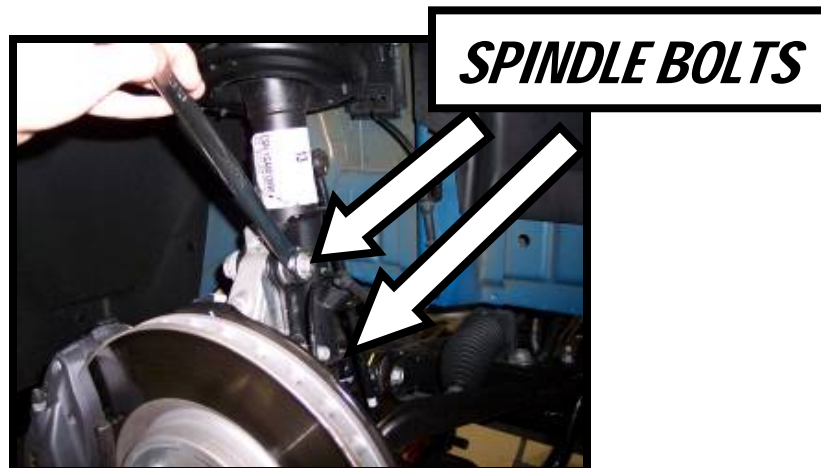
4. Unbolt the sway bar link from the strut.



5. Loosen the nut on top of the strut underneath the hood.
NOTE: Do not completely remove the nut. Loosen until it can be later removed by hand. This will make it easiest to remove the strut.



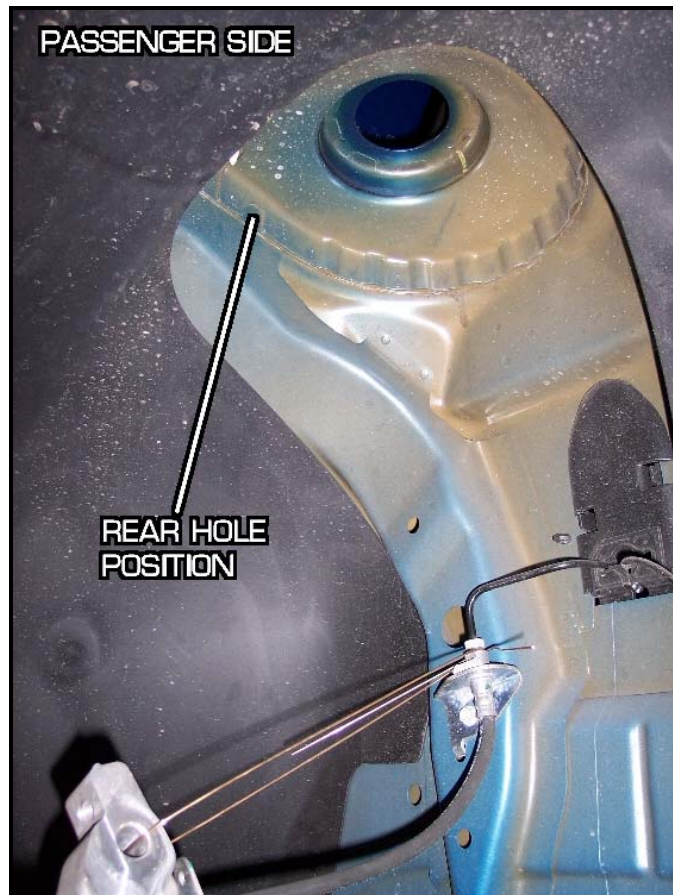
6. Mark the strut where the upright nuts are located with a marker. Remove the bolts that hold the spindle to the strut.



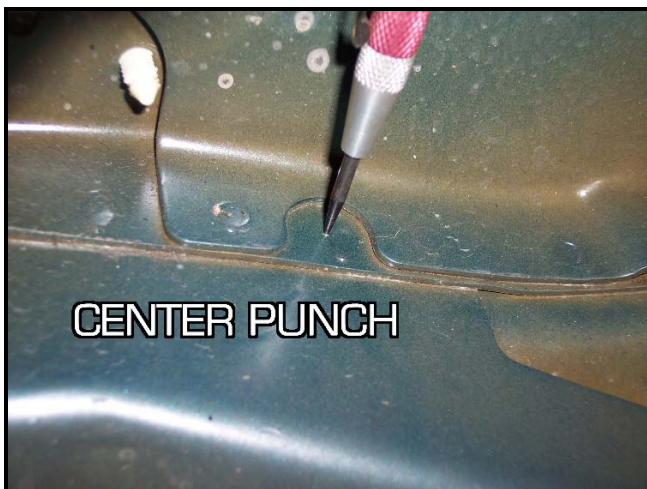
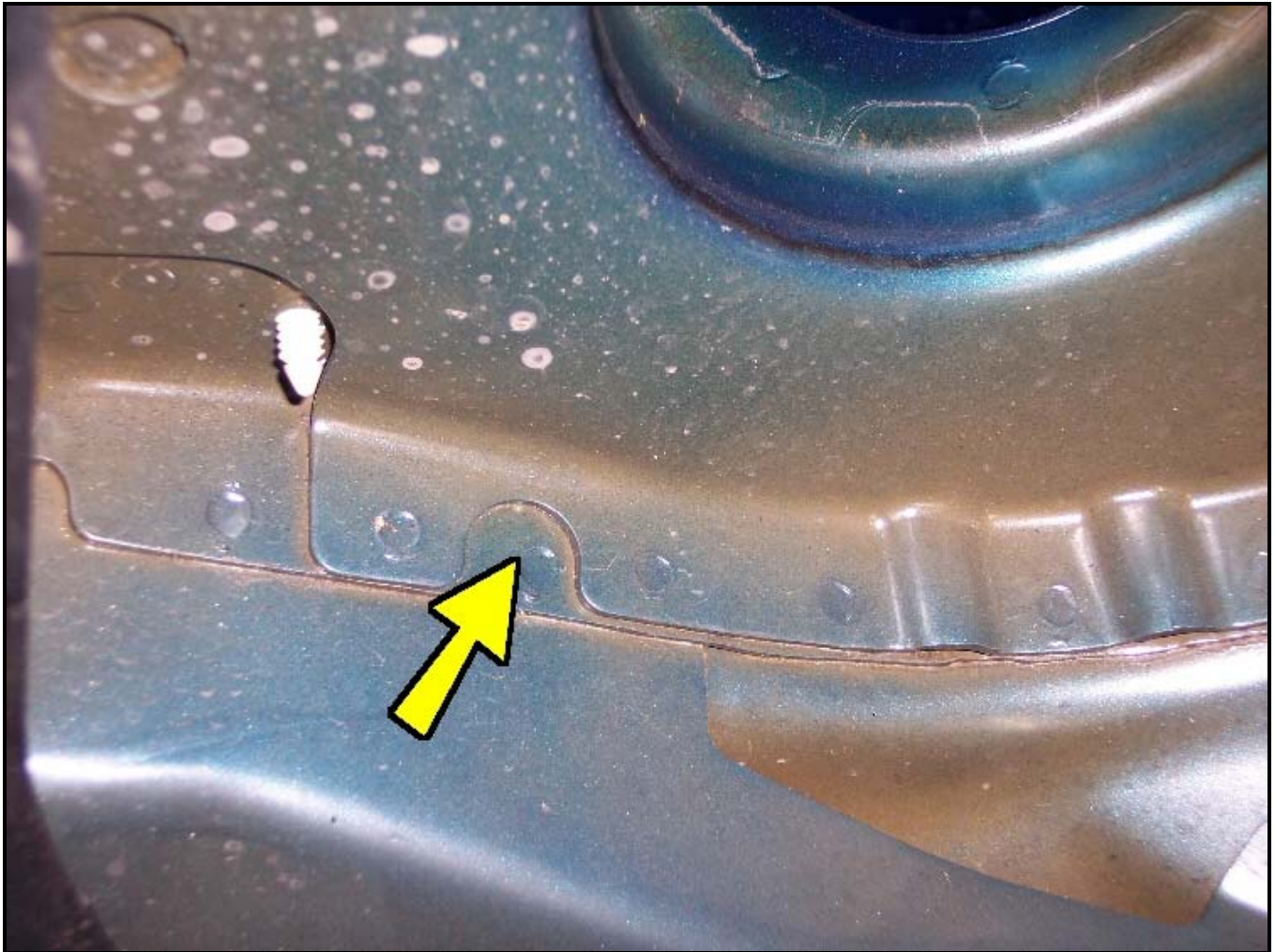
7. Now while supporting the strut with one hand, remove the nut on top and lower the strut. Use a bungee cord or wire to hold the upright close to the chassis. This will ensure the suspension does not hang too low putting tension on the brake hose.

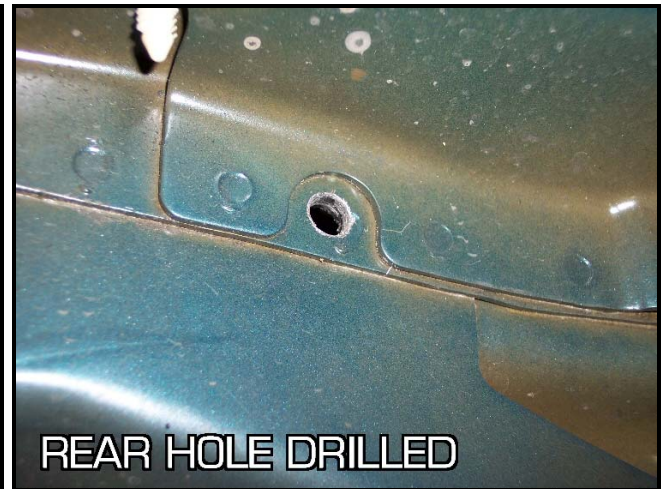
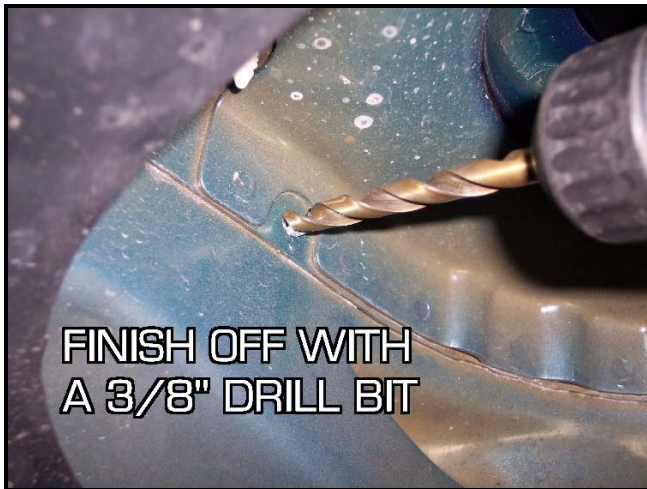


8. Peek underneath the strut tower apron. The first holes you will be drilling are the rear holes located in the pictures below.

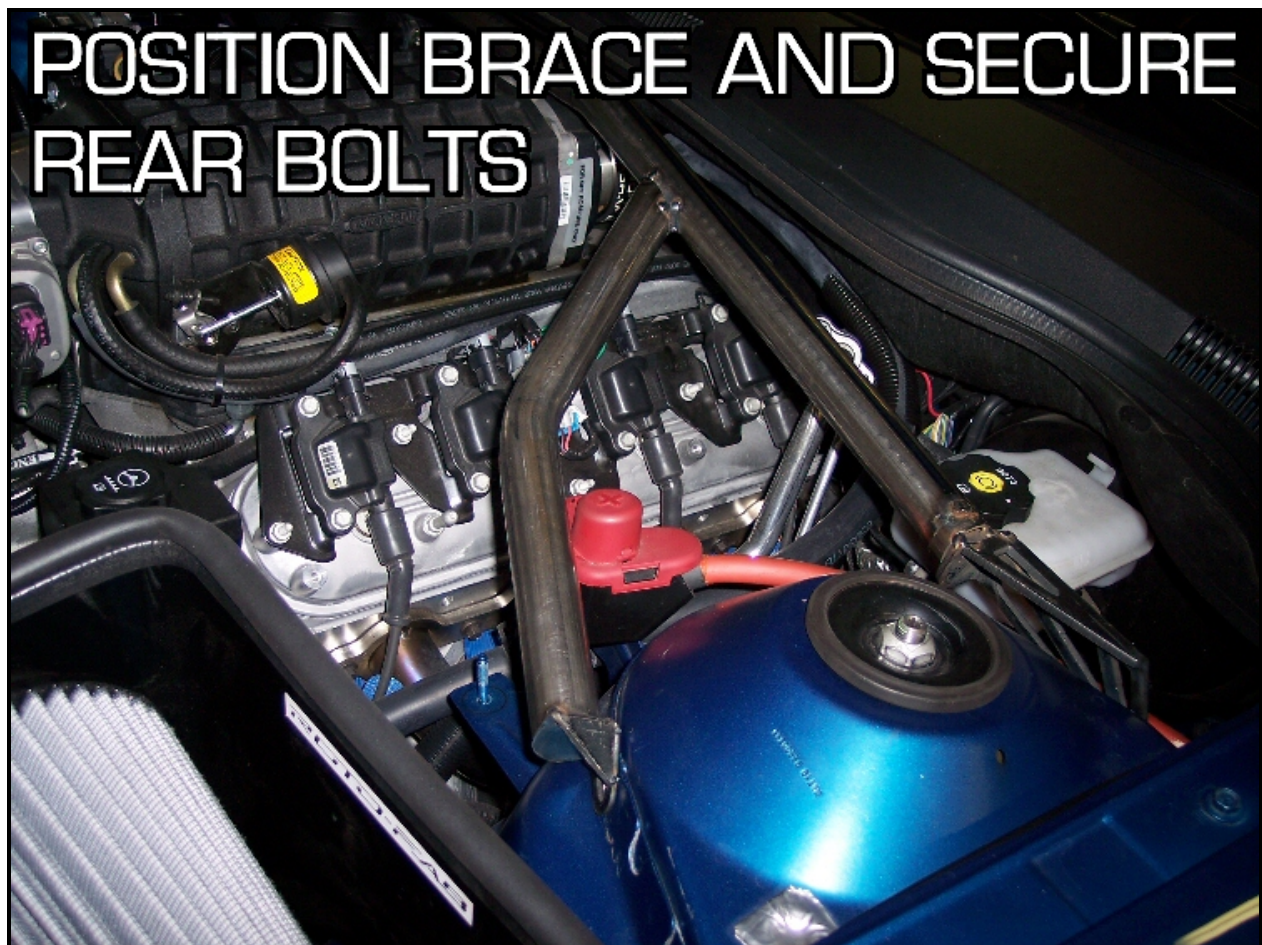


- Center punch the center of the semicircle shaped seam. Drill a pilot hole with a 1/16" or 1/8" drill bit. Then drill the hole out with a 3/8" drill bit.

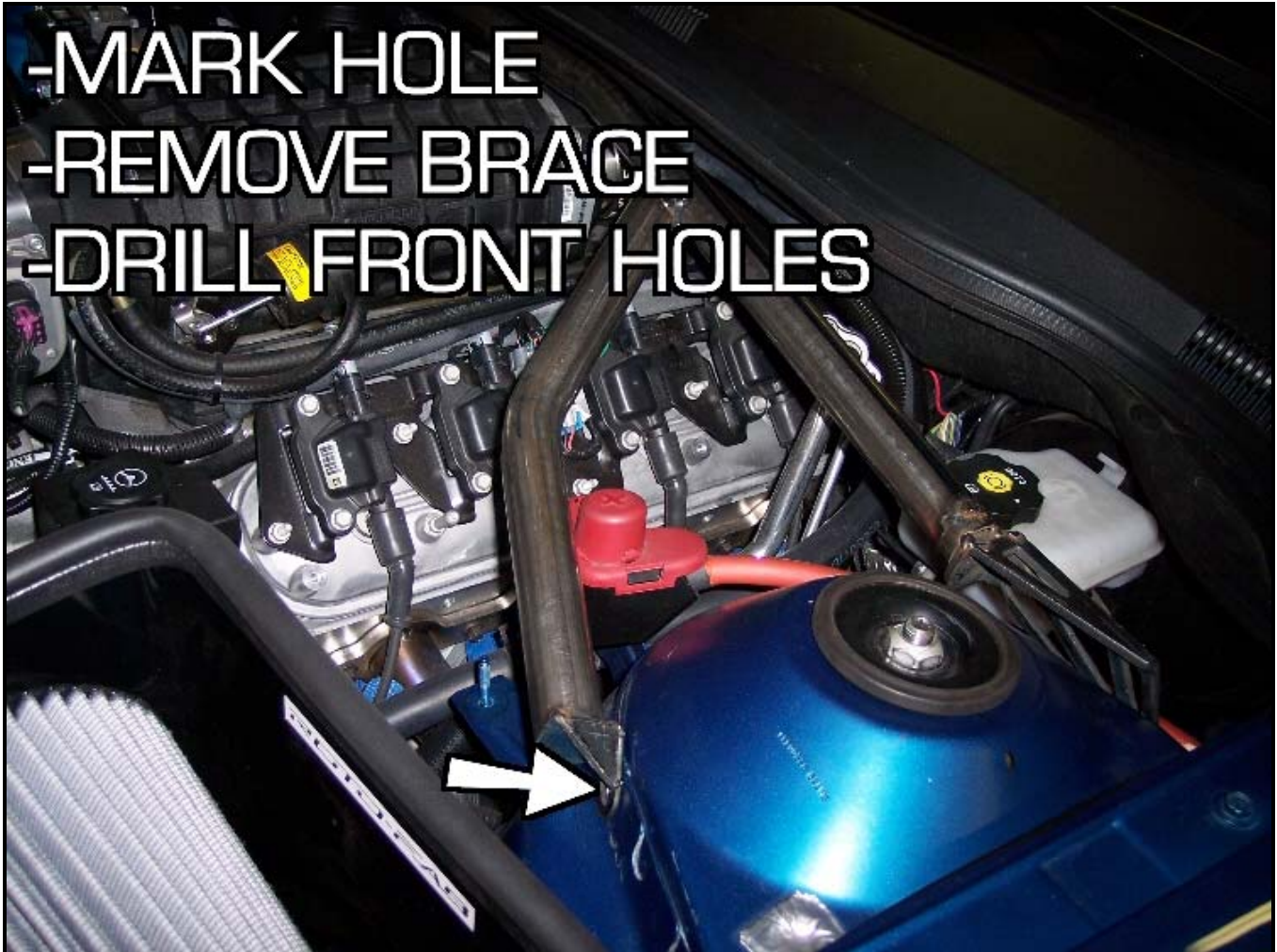




10. Once the rear holes are drilled out on the both sides, Position the strut brace in the engine bay. Install the longer rear bolts through the holes you just drilled and through the rear bracket of the brace. Spin the nuts on, but do not tighten. The front mounts will sit in front of the strut towers.



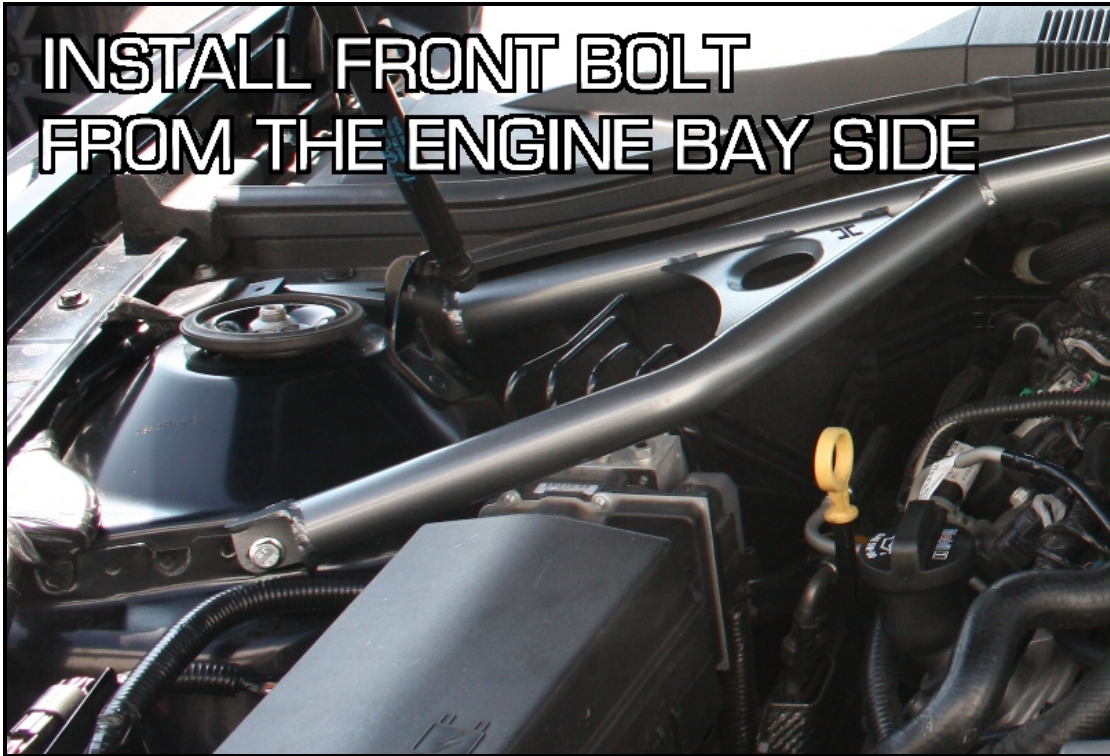
11. With the strut brace in place you can now mark the front holes with a marker. Mark the center of the front bracket slot on each side. Remove the strut brace from the vehicle.



12. Drill the front holes in the same manner as the rear holes. Start with a 1/16" or 1/8" pilot hole and finish it off with a 3/8" hole. These holes can be drilled from the engine bay side.

13. Reinstall the strut brace on the vehicle and insert the longer bolts from the bottom of the strut tower through the rear holes. The shorter bolts are for the front and can be inserted from the front. Use the lock washer on the nut side of the fasteners.







**REAR BOLT INSTALLS FROM
UNDERNEATH THE STRUT
TOWER**

14. Reinstall the front struts in reverse order and you are finished with your installation.

Sport Sway Bar Kit 22109 2010 Chevy Camaro



IMPORTANT: PLEASE READ THE ENTIRE INSTRUCTION MANUAL BEFORE STARTING THIS INSTALLATION.

Front Sway Bar Installation

1F *Raise the Vehicle*

Raise front of the vehicle using a floor jack and place jack stands in the proper jacking points. Securely block the rear wheels of the vehicle.



2F *Remove the Driver Side Front Wheel*

The front bar will sneak it's way out towards the driver side. Remove the driver side front wheel to gain more clearance for installation.



3F *Disconnect the Front End Links*

Disconnect the front end links from the sway bar ends on each side.

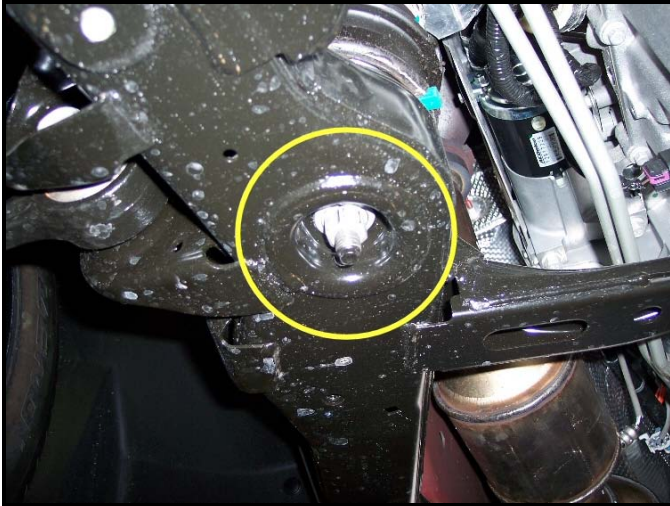


4F *Detach the Sway Bar Bushing Brackets*

Just above the front subframe, the sway bar is attached by 2 bushing brackets, one on each side. Undo the 2 nuts per bracket to detach the sway bar from the subframe.

5F *Raise the Engine*

You will need more room to get the sway bar out from between the subframe and the engine. To do this, unbolt the 2 motor mounts attached to the subframe and jack the engine up. Make sure to use a block of wood between the jack and the engine to avoid damage.



6F *Remove Stock Bar*

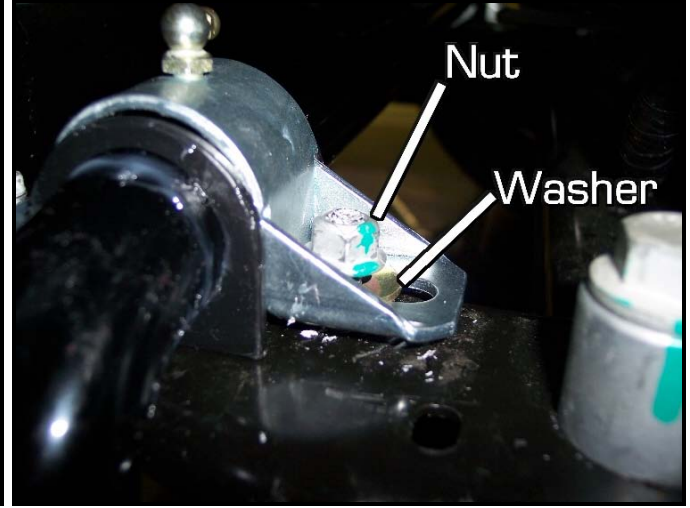
Fish the stock bar towards the driver side until it's completely out. If you need more clearance, carefully raise the engine more until the bar can be removed.



7F *Reinstall the Hotchkis Sway Bar*

Reinstall the Hotchkis Sway Bar in the same manner as stock removal. Your kit comes with new bushings and brackets. Apply the provided silicone grease in the inside area of each bushing. Install the bushings onto the bar. When reinstalling the stock bushing bracket nuts, please use the provided washers from your hardware kit. You should use one washer for each nut totaling 4 for the front installation. Apply a small amount of lock threading compound (included in your kit) on each nut. Make sure to use the brackets that have the 90° grease fitting attached. You may choose to point the fitting towards the outside or inside depending on which direction is easiest for you to regrease in the future.





8F *Reinstall the End Links*

Lower the engine down and fully tighten the motor mount nuts completely. Insert the end links back into the sway bar ends and fully tighten the nuts using the supplied lock threading compound.



9F *Final Inspection*

Before lowering the front end back onto the ground, make sure all hardware is fully tightened. You are finished with the front Hotchkis Sway Bar installation. Let's move on to the rear bar.

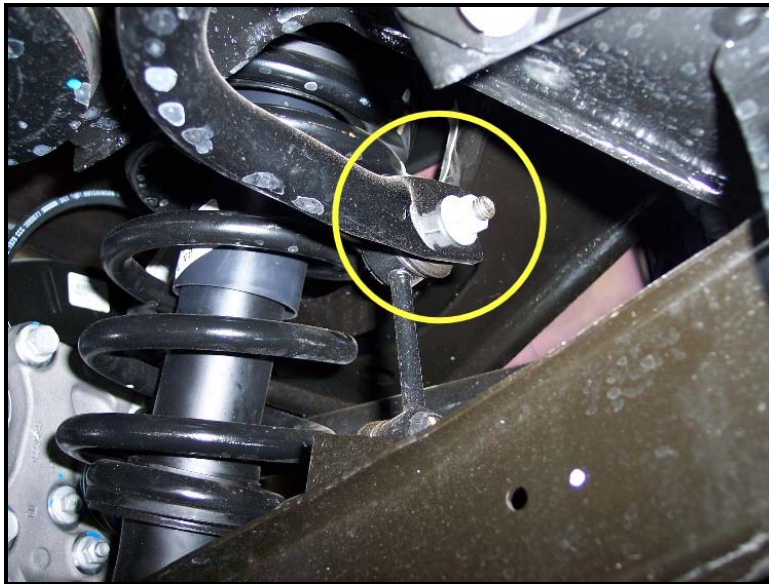
Rear Sway Bar Installation

1R *Raise the Vehicle*

Raise rear of the vehicle by driving the rear of the vehicle onto floor ramps. You may use floor jacks to jack up the rear of the car, but the installation is easier with the suspension at ride height. Once the rear of the vehicle is accessible, securely block the front wheels of the vehicle.

2R *Disconnect the Rear End Links*

Disconnect the rear end links from the sway bar ends on each side.



3R *Detach the Sway Bar Bushing Brackets*

The sway bar is attached by 2 bushing brackets, one on each side. Undo the 2 bolts per bracket to detach the sway bar from the subframe. The bar should be loose from the vehicle. There is enough room to fish the bar completely out without dropping the exhaust.



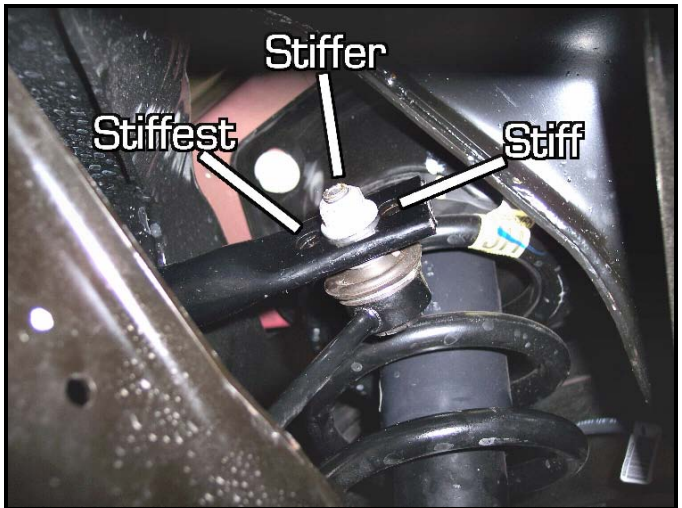
4R *Reinstall the Hotchkis Sway Bar*

Reinstall the Hotchkis Sway Bar in the same manner as stock removal. Your kit comes with new bushings and brackets. Apply the provided silicone grease in the inside area of each bushing. Install the bushings onto the bar. When reinstalling the stock bushing bracket nuts, please use the provided washers from your hardware kit. You should use one washer for each bolt totaling 4 for the rear installation. Apply a small amount of lock threading compound (included in your kit) on each bolt. Make sure to use the brackets that have the straight grease fitting attached. Fully tighten the bracket hardware.



5R *Reinstall the End Links*

Insert the end links back into the sway bar ends and fully tighten the nuts using the supplied lock threading compound.



6R *Final Inspection*

Before lowering the rear end back onto the ground, make sure all hardware is fully tightened. You are finished with the Rear Hotchkis Sway Bar installation. Enjoy your new Sway Bar set.

P/N# 25109
Sway Bar End Links
Installation Instructions



Thank you for your purchase of this Hotchkis Performance product. Your End Link set was designed with the performance and durability you've come to expect from Hotchkis Performance.

Note: Please read the entire installation instructions before starting. Having the right tools will ensure a smooth install process.

FRONT END LINK INSTALLATION

1. Raise the front end of the vehicle. Remove the front wheels.
2. Disconnect the OE end link from the sway bar ends. Retain the nut for reinstallation.

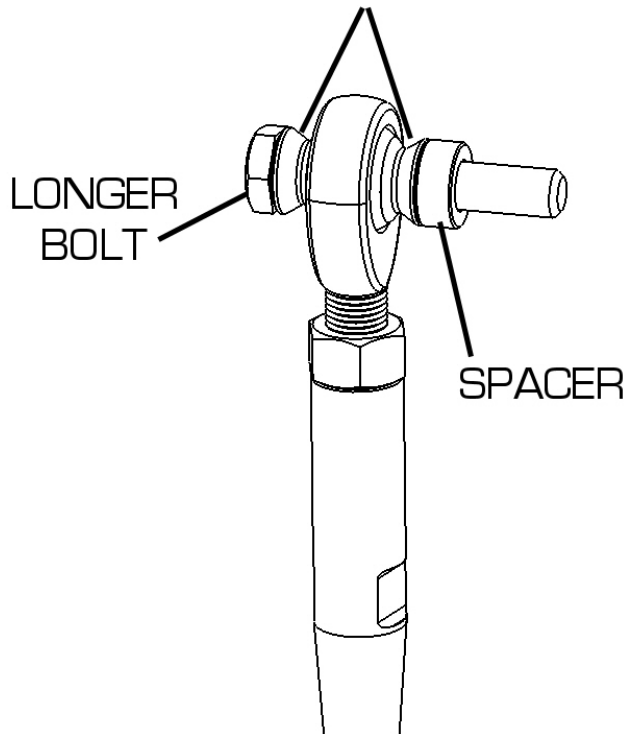


3. Disconnect the OE end link from the front struts. Retain the nut for reinstallation.



4. As a default setting, set the length of the Hotchkis links to the same length as the OE links.
5. Assemble the links as shown in the diagram. (Use the longer bolts for the front)

MISALIGNMENT SPACERS



6. Reinstall the Hotchkis end links onto the vehicle in the same manner as removal. Reuse the OE nuts.
7. Clock the rod ends (heim joints) so that there is proper articulation throughout the entire steering travel. You should be able to turn the steering wheel left or right (lock to lock) and the rod ends should not bind. Once the rod ends are properly clocked, tighten the jam nuts on each end.

REAR END LINK INSTALLATION

1. Raise the rear end of the vehicle to access the underside. You do not need to remove the wheels. If you have drive-on floor ramps the installation will be easier.
2. Disconnect the OE end link from the sway bar ends. Retain the nut for reinstallation.

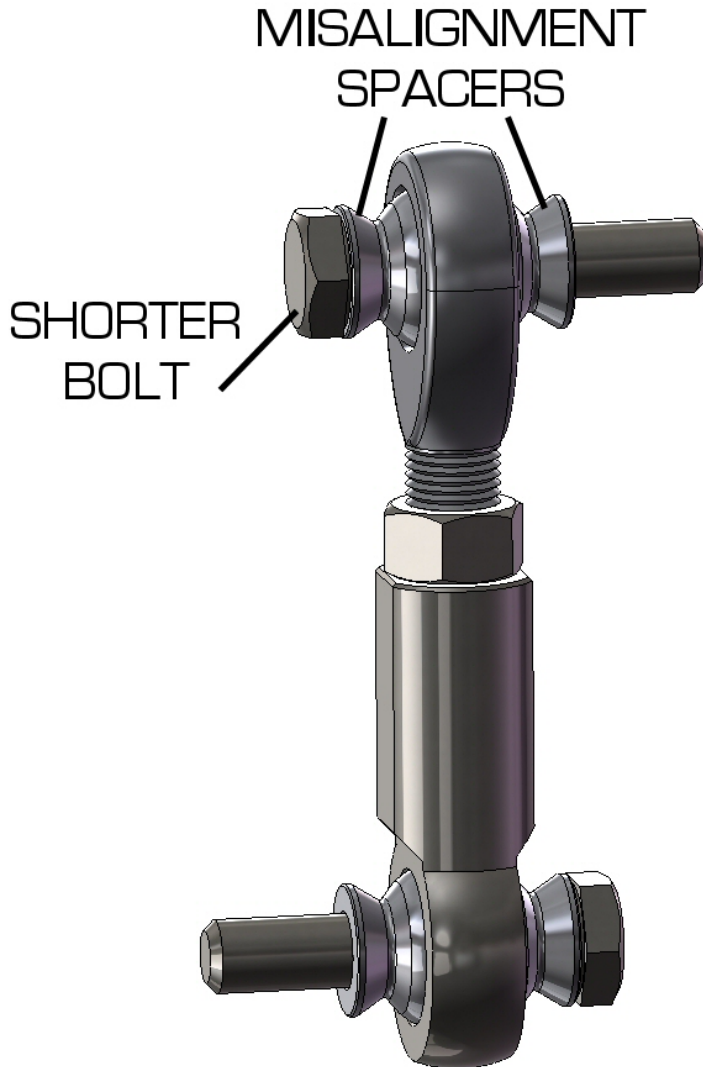


3. Disconnect the OE end link from the front struts. Retain the nut for reinstallation.



4. As a default setting, set the length of the Hotchkis links to the same length as the OE links. Tighten the jam nuts once the length is set.

5. Assemble the links as shown in the diagram. (Use the shorter bolts for the rear)



6. Reinstall the Hotchkis end links onto the vehicle in the same manner as removal. Reuse the OE nuts.