

Rear Suspension System
18390
67-72 C-10 Pickup Truck

IMPORTANT: PLEASE READ THE ENTIRE INSTRUCTION MANUAL BEFORE STARTING THIS INSTALLATION. THIS KIT IS INTENDED FOR TRUCKS NO LOWER THAN A 6" REAR DROP. THE USE OF LOWERING BLOCKS IN CONJUNCTION WITH A 6" REAR DROP IS AN ACCEPTABLE MEANS OF LOWERING THE REAR PAST 6". BE SURE TO HAVE THE REAR FRAME C-NOTCHED FOR DROPS LOWER THAN 6".



Installation of Hotchkis Rear Shocks

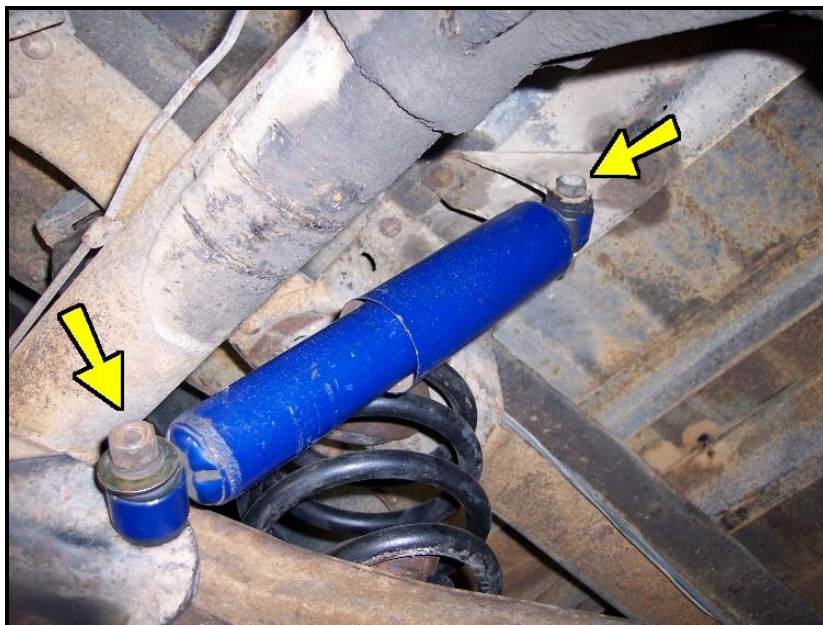
1 *Raise the Truck*

Raise the vehicle by using a drive-on alignment rack. Securely block the front wheels of the vehicle.



2 *Remove Old Shocks*

Remove your old rear shocks by unfastening the top and bottom nuts & bolts. You may discard the shocks and hardware.



3 *Support the Trailing arms*

Using the lifting jacks on your lift, support the rear trailing arms under the coil springs. Jack the truck up until the rear wheels just begin to raise off the lift surface.



4 *Remove Stock Shock Mounts*

Both the upper and lower shock mounts will be replaced. Using an air chisel, cut off the rivet heads securing the upper mount to the rear frame. Completely remove the rivets.





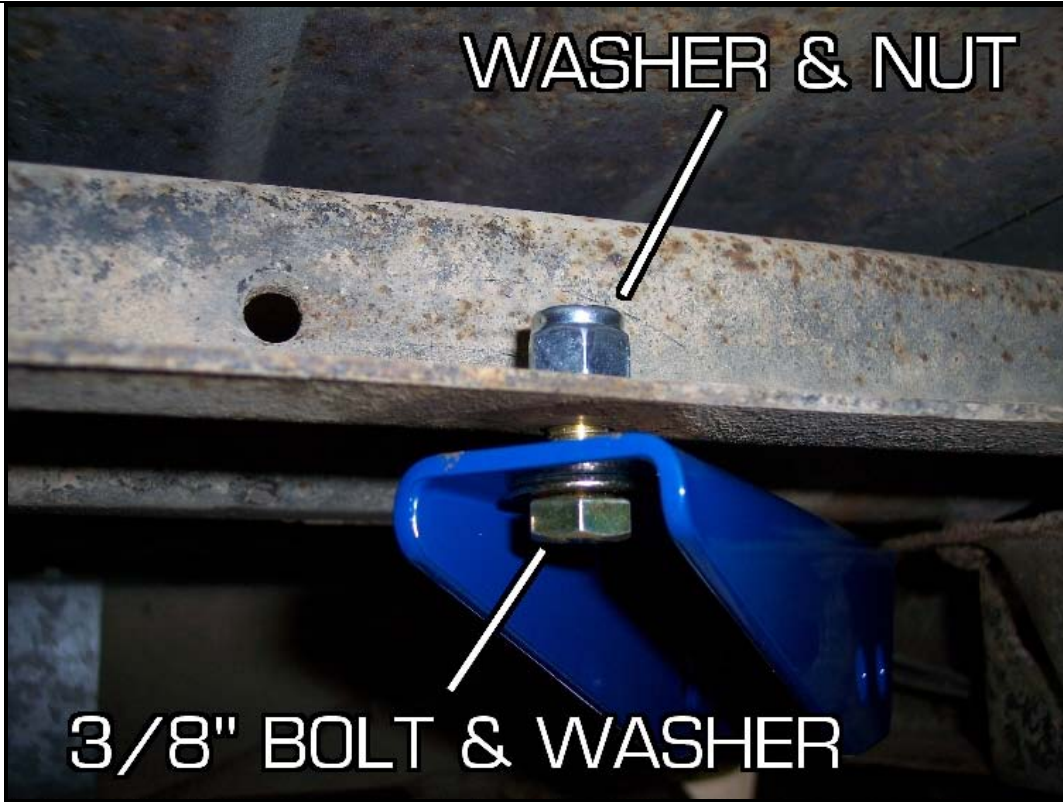
Next, remove the lower shock mounts by undoing the large u-bolts holding the rear axle to the trailing arms. The lower mounts should be loose from the arms. You may discard the upper and lower mounts.





- 5 *Install Hotchkis Shock Mounts*
Install the Hotchkis upper shock mounts as shown in the picture. Hardware is provided for mounting to the existing rivet holes.



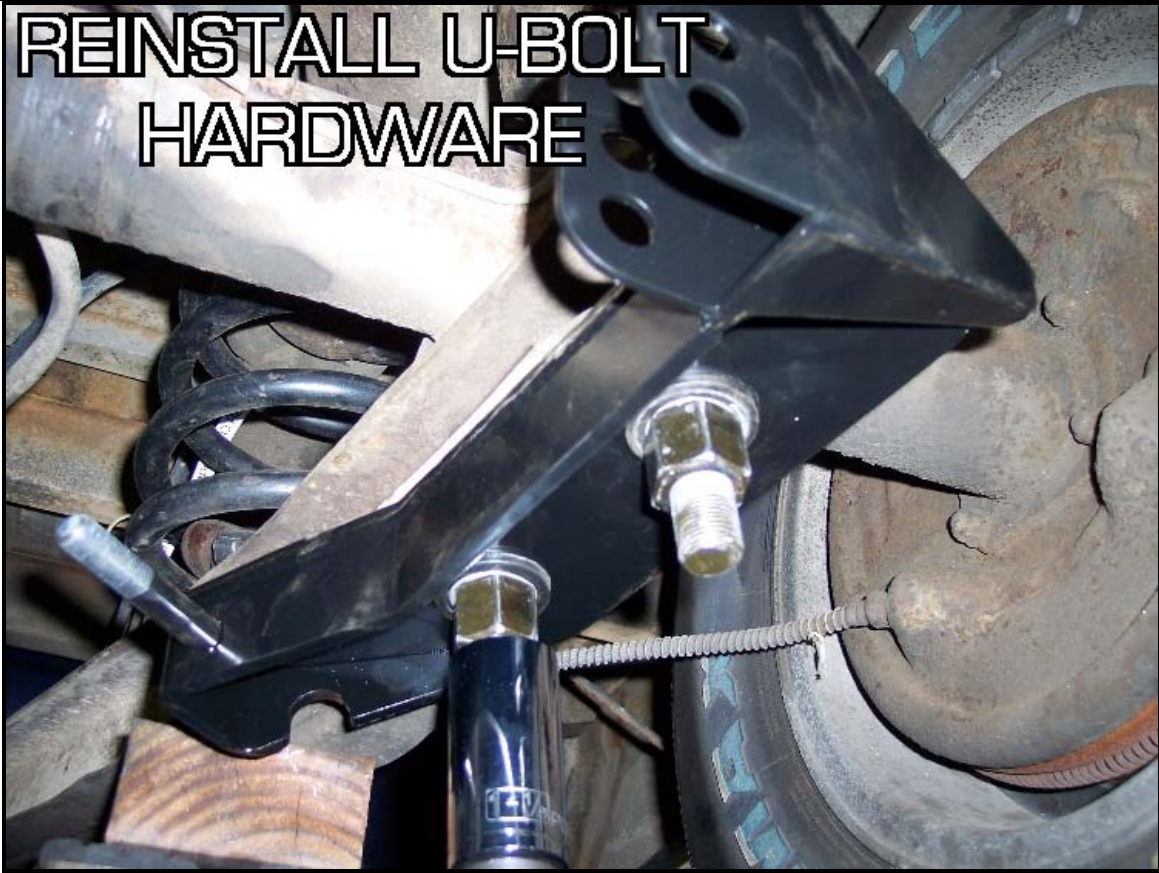


Install the lower shock mounts in the same manner as stock removal. Please see picture for proper orientation and placement of side specific brackets. Secure the lower shock mounts using the original u-bolt hardware. (Please call Hotchkis if you would like to purchase new U-bolts → P/N: **T1734**) Fully tighten hardware at this time. (Tip: It is recommended that you apply anti-seize compound on the U-bolt threads before reinstalling the nut.)





**REINSTALL U-BOLT
HARDWARE**



REPEAT ON DRIVER SIDE

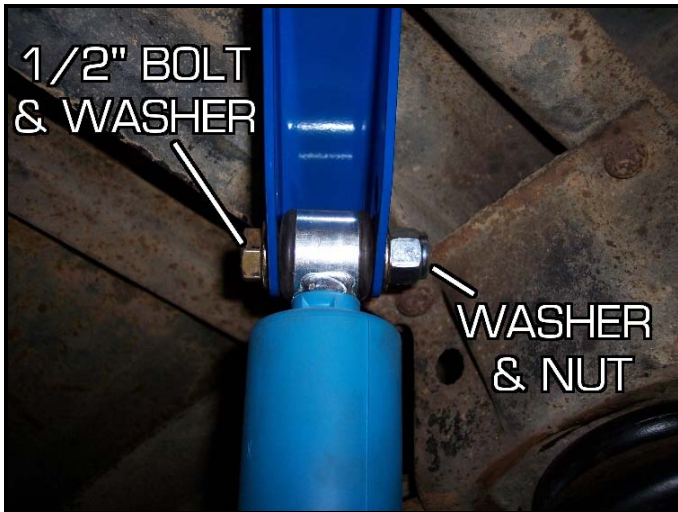


6 *Install Hotchkis/Bilstein Shocks*

With the mounts in place, install the shocks by starting with the lower mount. Install the following hardware in the order shown in the picture. Leave this hardware loose until you get the upper mount in.



New hardware is also provided for the upper mount. The Hotchkis upper mount has 2 adjustment holes. The hole toward the rear is the stiffer shock setting. Once the shock is in place, fully tighten all shock hardware.

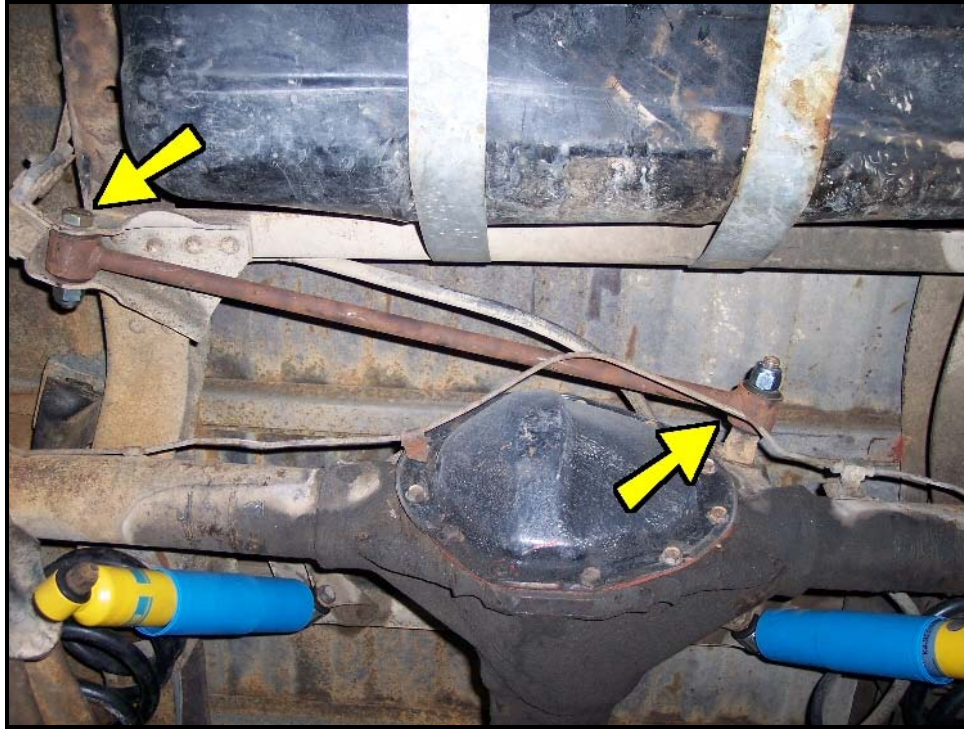


Lower the lifting jack from the trailing arms and you are now finished with the rear shock installation.

Installation of Hotchkis Track Bar

1 *Remove Stock Track Bar*

Remove the stock track bar by undoing the left frame mount bolt and the nut attaching the track bar to the rear end housing. Retain the frame mount hardware for reinstallation.

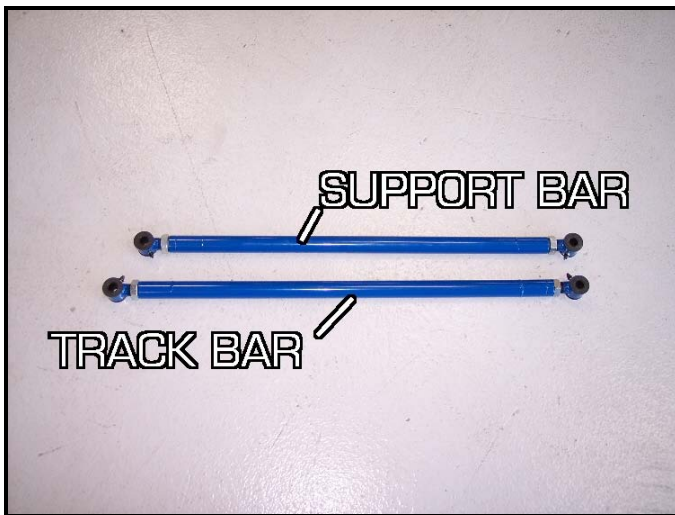


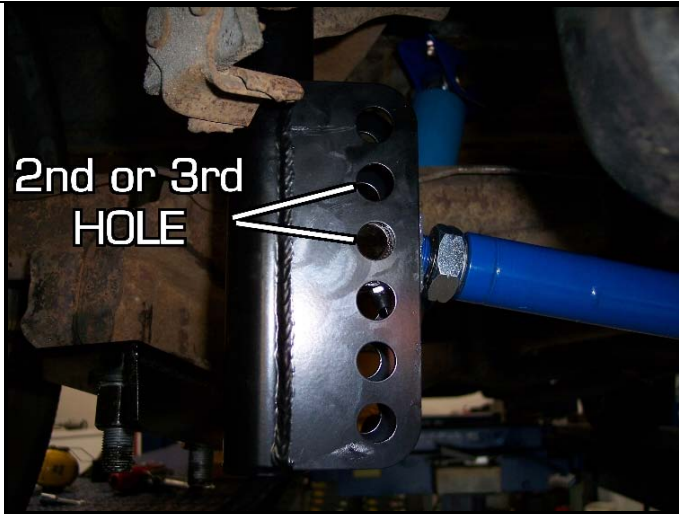
2 *Install Track Bar Mounts*

Grab the driver side track bar mount and install it on the existing frame mount. Use the original bolt and nut. Do not fully tighten this bolt yet.



Take the shorter adjustable bar and install it on the 2nd or 3rd hole on the driver side mount bracket. Grease bushing surface with provided lube.





Attach the passenger side frame bracket to the bar using the included hardware.



Adjust the length of the support bar so that the driver side bracket is vertical and the passenger side bracket mates to the frame rail properly.

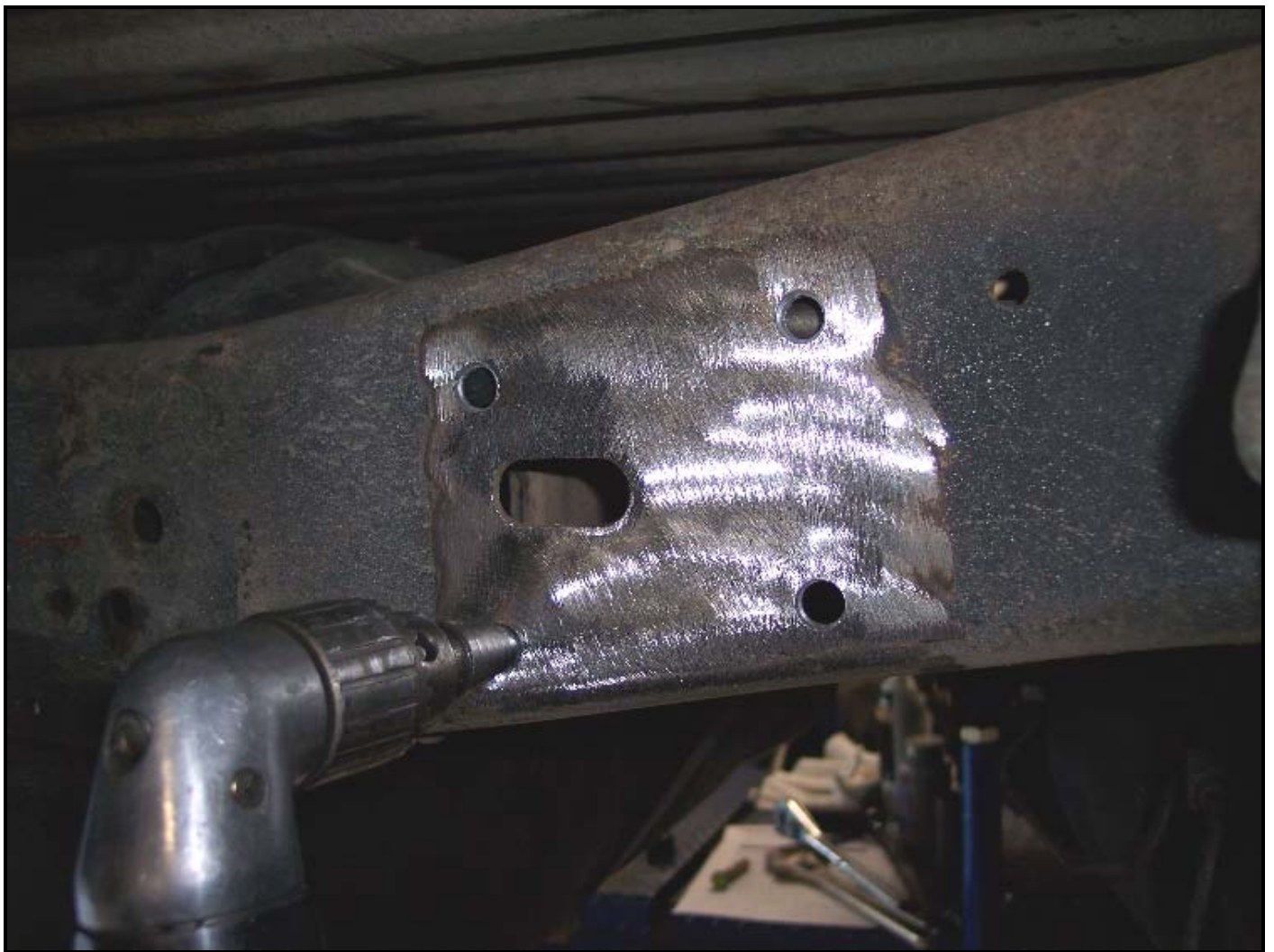


Mark the passenger side frame rails to record all of the holes for the bracket.

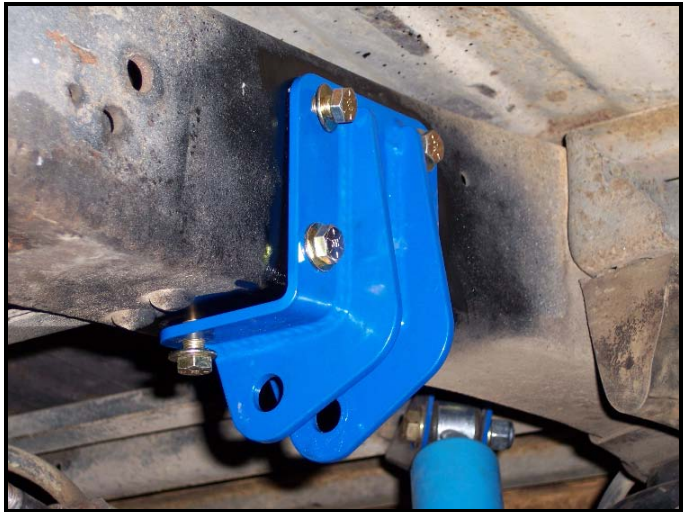


(Important Note: Make sure the bracket is not too far towards the rear, which may cause the rearward bolts to interfere with the frame support. Frame support held in by rivets shown in above pictures.)

Drill the 6 holes using a 7/16" drill bit. (Tip: Drill pilot holes with a smaller 1/8" bit first) Watch out for any fuel lines inside the frame rail!



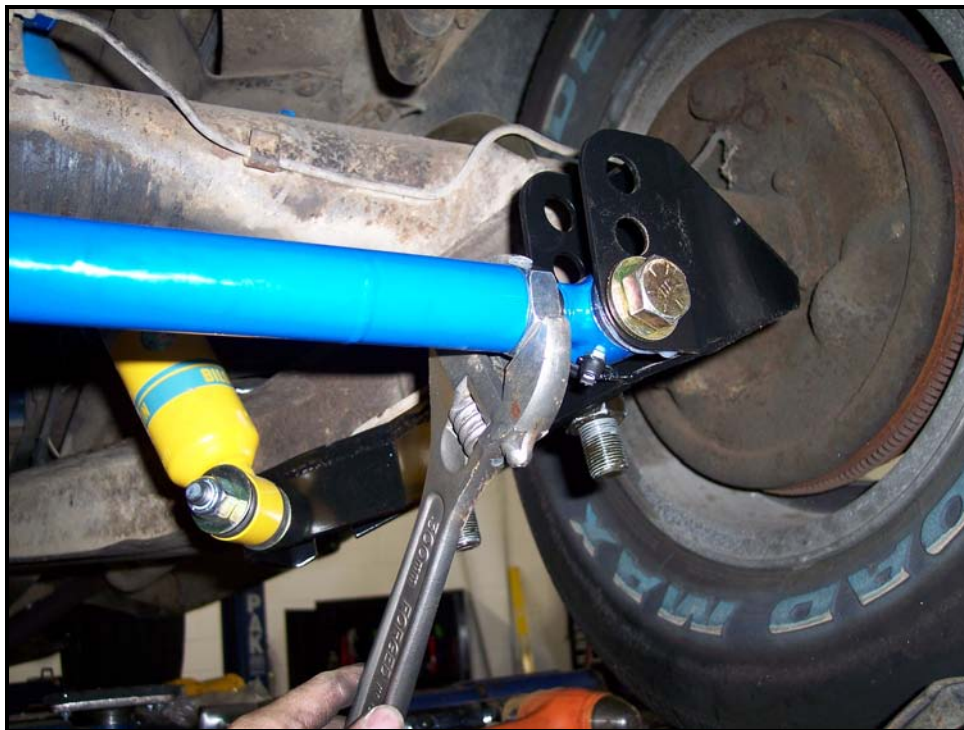
Once the holes are drilled, use the provided 3/8" hardware to mount the passenger side bracket to the frame. Fully tighten this hardware and the driver side hardware.



Next use the longer adjustable bar and mount it to the driver side frame bracket and the passenger side lower shock mount bracket. Choose the holes that allow the bar to be as low and as level as possible based on your ride height. You will need to adjust the length of the track bar to match the holes up. Again, apply the supplied grease to bushing surfaces.



Once all of the suspension members are in place, measure the distance between the inside of the rear tires and the wheel wells. Adjust the track bar (lower one) in or out to equalize the tire gap. Once adjusted, fully tighten all of the hardware.



You are finished with the Hotchkis rear suspension system!



Check out our other great products for your C10 Pickup at Hotchkis.net

- 19390 Sport Coil Springs (4/6 Drop)
- 11390U Tubular Upper A-Arms (Better Camber Curve)
- 11390L Tubular Lower A-Arms (Increased Caster for Stability and Cornering Grip)
- 22390 Sway Bar Kit (Reduce Body Roll and Enhance Vehicle Response)
- 30390 Anti-Squat Kit (Increased anti-squat for better launches)
- 70390 Front Shock Kit (Re-positions front Bilstein shocks for more travel for lowered trucks)



Hotchkis Performance LLC