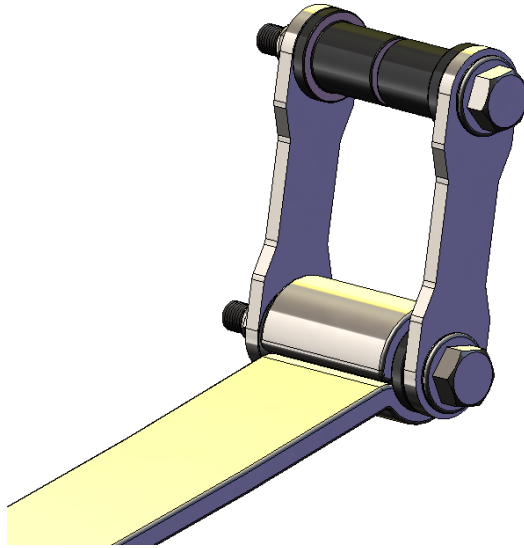


Rear Leaf Shackle Kit 17367 *70-74 Chrysler E-Body 'Cuda, Challenger*



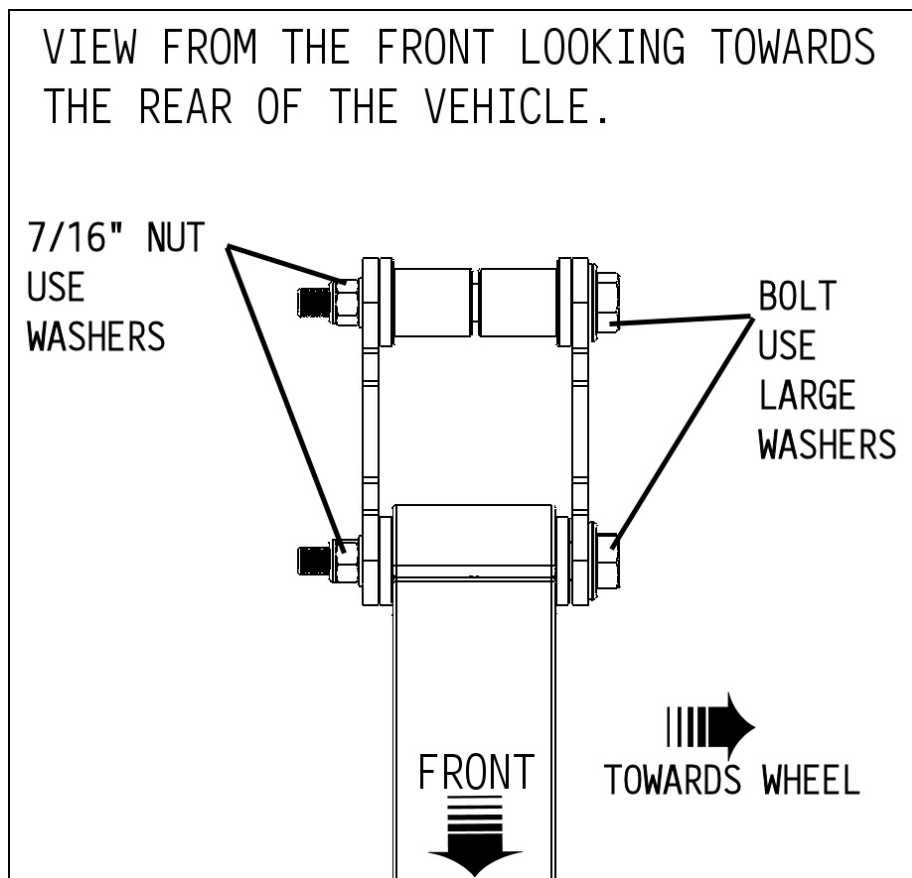
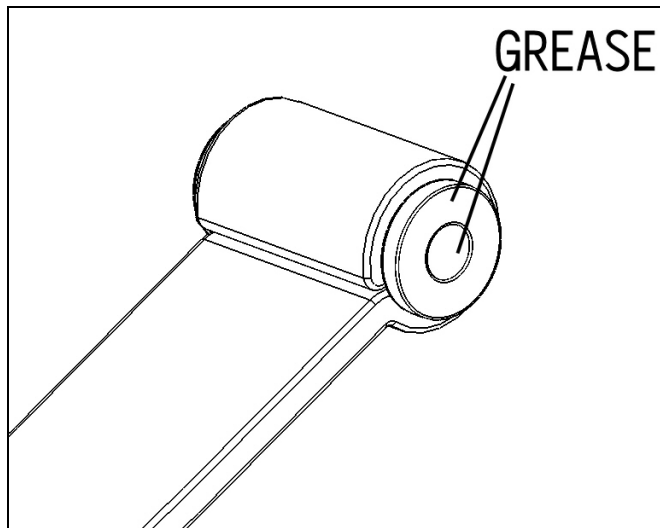
IMPORTANT: PLEASE READ THE ENTIRE INSTRUCTION MANUAL BEFORE STARTING THIS INSTALLATION.

- 1. Raise the Vehicle*
Raise the vehicle and safely secure it on jack stands.
- 2. Support the Pumpkin*
Slide a floor jack underneath the rear end to relieve the differential/wheel weight off of the leaf springs.
- 3. Remove Old Rear Shackles*
Undo the 2 nuts and remove the rear leaf spring shackles

4. *Install Hotchkis Shackles*

Install the Hotchkis Shackles in same manner as stock removal. The kit comes with replacement bushings for the rear leaf eye as well as for the frame mount.

Insert the bushings into the rear eye of the leaf spring and grease the side surfaces and the inner hole with the supplied lube. Insert the frame bushings into the frame mount and grease them in a similar manner.



-
5. *Tighten Hardware*
Fully tighten the shackle hardware and you are finished.

