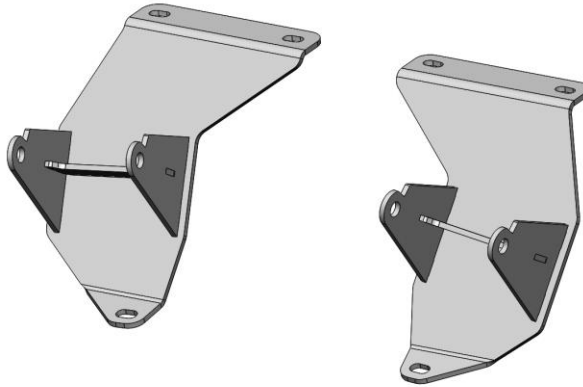




1973-1987 GM C10 LS/LT Swap Engine Mounting Brackets BHS540 Installation Instructions



Thank you for choosing to use HOOKER™ engine swap mounting brackets as part of your LS swap project. These mounting brackets are part of the most comprehensively engineered system of mounting components, headers and exhaust systems available for this application. Please read these instructions thoroughly before attempting installation.

PRE-INSTALLATION CONSIDERATIONS:

Installation of these brackets requires the use of new stock OE 4th-gen F-body LS engine mounts (ex: GM 22179268 or Anchor 3064) or aftermarket polyurethane inserts (Hooker Blackheart LS/LT Polyurethane Inserts – P/N's 71221016HKR (Black) or 71221017HKR (Red) along with Hooker 71221018HKR LS heavy duty clamshells or 71221019HKR LT heavy duty clamshells.

In addition, a pair of metric motor mount through-bolts and a pair of locking flange nuts will need to be sourced for connecting the Hooker engine brackets to the motor mounts. Specification requirements are 10.9 M12 x 1.75 x 140mm or Hooker Blackheart 71223015HKR engine mount bolt kit.

COMPATIBILITY INFORMATION:

These LS/LT swap brackets have only been tested on 2-wheel drive applications.

This engine swap mounting bracket kit requires the use of a Holley® **302-1**, **302-2**, and **302-3** oil pan for installation and provides engine compatibility with Holley accessory drive system equivalent in all spacings.

BEFORE BEGINNING:

Check that the hardware package includes the following:

Qty.	Description
6	3/8 x 16 x 1 Bolts
6	3/8 x 16 Nuts

INSTALLATION:

1. Remove the factory engine mounts from the frame and clean the bracket mounting surfaces.
2. Attach the Hooker engine mounting brackets to the frame (**Figure 1**) using the supplied 3/8" hardware, leave the hardware loose at this time.

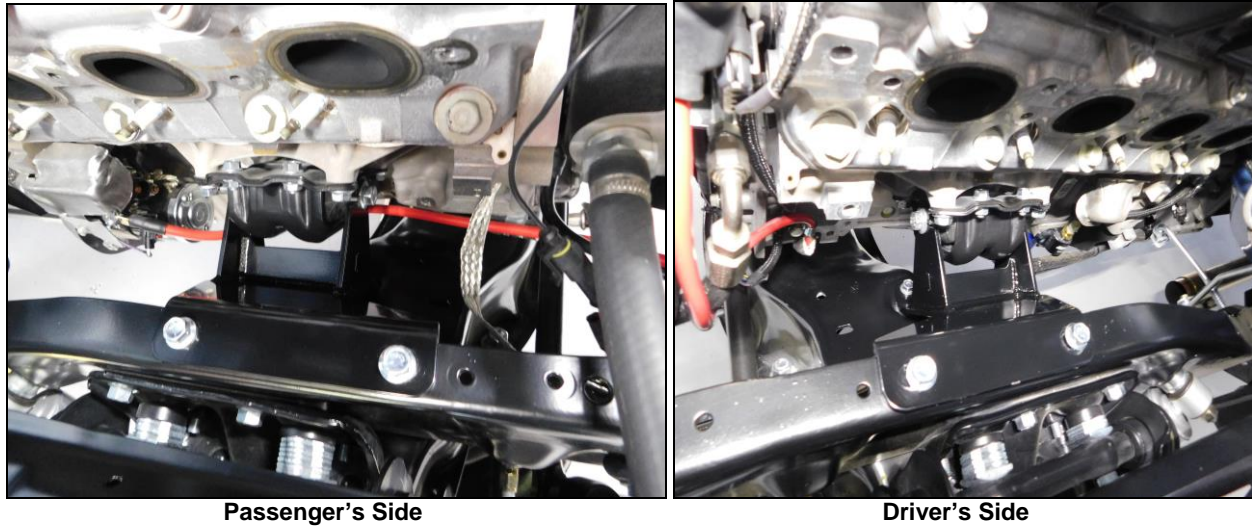


Figure 1

3. Install new OE rubber or aftermarket polyurethane mounts on the LS or LT engine to be installed.
4. Install the engine/transmission assembly onto the Hooker engine brackets and couple the engine mounts to the engine brackets using the Hooker Blackheart 71223015HKR engine mount bolt kit or user-sourced metric cap screws and flanged locking nuts.
5. Once the engine is sitting in the engine bay as it should, use a wrench to tighten the (x6) mounting bolts and through bolt.
6. Raise the rear of the transmission as high as it will go and install the Hooker LS/LT swap transmission crossmember per the instructions included with its packaging.
7. Your LS swap engine and transmission are now mounted and ready to be outfitted with headers and an exhaust system. Hooker Blackheart LS/LT 1973-87 C10 swap headers and dual exhaust systems are specifically designed for use with these engine mounting brackets.