



**2007-2015 Mini Cooper S (R56, R57, R58, & R59) (t) L4-1.6L
2.5" Cat-Back Exhaust, 304SS
BH8324
Installation Instructions**



NOTE: YOU WILL NEED TO CUT THE OEM EXHAUST.

Thank you for making HOOKER HEADERS your choice in a high-performance exhaust system. Extensive dyno/track testing has enabled HOOKER to offer the most advanced design in exhaust systems. The installation, while not complex, will take a certain amount of time. However, the additional horsepower and improved performance will more than justify your efforts. Proper installation and maintenance will ensure long life and maximum performance from your HOOKER HEADER exhaust system.

BEFORE STARTING:

Your vehicle must be raised a minimum of 36 inches. A floor hoist is ideal. If no hoist is available, we strongly urge the use of axle stands as a safety measure. Please read these instructions in their entirety before attempting installation.

CAUTION! WORK ONLY ON A LEVEL SURFACE. USE JACKS /JACK STANDS OF SUFFICIENT CAPACITY TO LIFT AND SUPPORT YOUR VEHICLE. NEVER WORK UNDER A VEHICLE SUPPORTED BY A FLOOR OR BUMPER JACK.

INCLUDED HARDWARE:

QTY.	P/N	Description
1	556R22	Band Clamp, 2.5" X 1.25" Wide, 430 SS
1	556R25	Band Clamp, 2.25" x 1.25" Wide, 430 SS
2	559R94	Decal - Blackheart 4"x2"

REMOVING THE OE EXHAUST:

1. Disconnect the negative cable from the vehicle battery.
2. Lift the vehicle and secure on jack stands.
3. Using a measuring tape, measure back 4" from the front of the OE resonator and make a mark. Use masking tape and wrap around tube. The tape will help you make a straight cut. Use a reciprocating saw to make your cut (**Figures 1 & 2**).

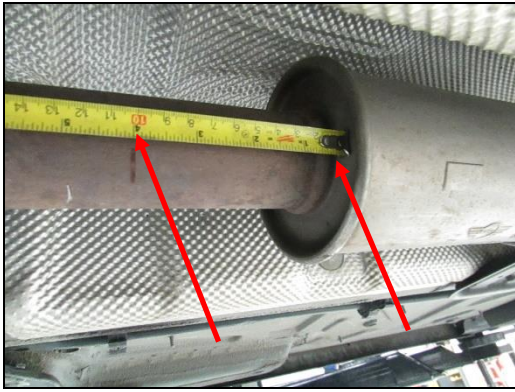


Figure 1



Figure 2

4. With a jack stain hold the OE exhaust up,remove the (x6) 10mm bolt heads and remove the cross brace (**Figure 3**).

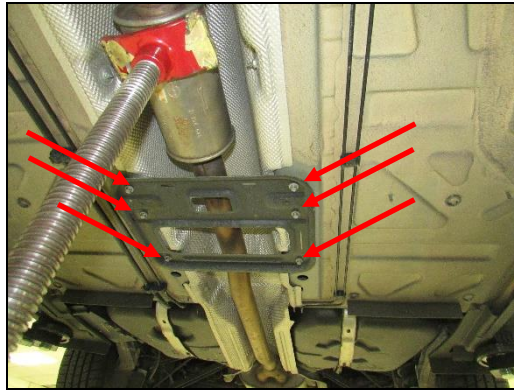


Figure 3

5. Remove the (x2) hangers out of the rubber isolaters and remove the OE exhaust (**Figure 4**).

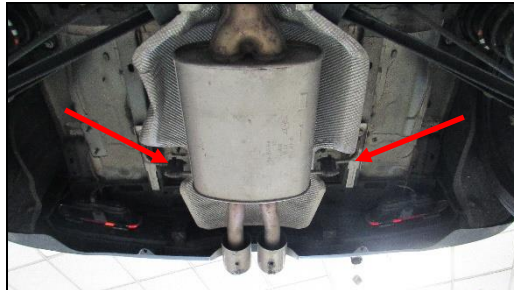


Figure 4

INSTALLATION:

1. Slide the supplied (x1) 2.25" band clamp over the OE exhaust, now slide on the Blackheart 2.5" mid pipe on the OE exhaust (**Figure 6**).



Figure 6

2. Install the cross brace tighten (x6) 10mm bolt heads (**Figure 7**).

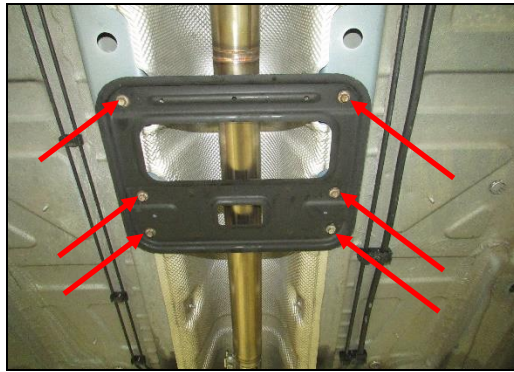


Figure 7

3. Slide on the supplied (x1) 2.5" band clamp. Slide on the Blackheart muffler (**Figure 8**).

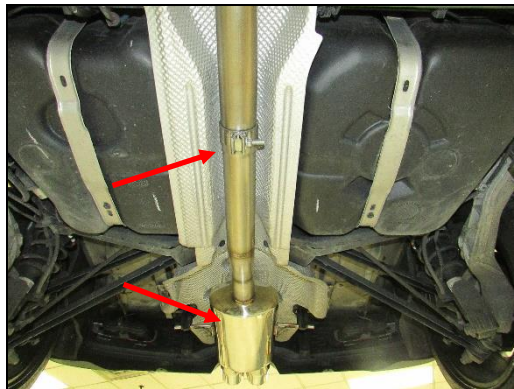


Figure 8

4. Install the (x2) hangers in the OE rubber isolaters (**Figure 9**).

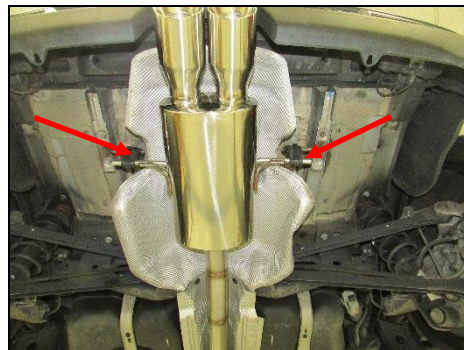


Figure 9

5. Line up the tips and tighten all clamps.
6. Remove the jack stands and lower the vehicle.
7. After 150 miles, re-check and tighten all bolts and clamps.

NOTE: It is normal for the Blackheart Exhaust System to emit smoke for the first few minutes during break-in period.