



**2007-2013 Mini Cooper (R56) Base Model L4-1.6L
2.25" Cat Back Exhaust, 304SS
BH8318
Installation Instructions**



NOTE: YOU WILL NEED TO CUT THE OEM EXHAUST.

Thank you for making HOOKER HEADERS your choice in a high-performance exhaust system. Extensive dyno/track testing has enabled HOOKER to offer the most advanced design in exhaust systems. The installation, while not complex, will take a certain amount of time. However, the additional horsepower and improved performance will more than justify your efforts. Proper installation and maintenance will ensure long life and maximum performance from your HOOKER HEADER exhaust system.

BEFORE STARTING:

Your vehicle must be raised a minimum of 36 inches. A floor hoist is ideal. If no hoist is available, we strongly urge the use of axle stands as a safety measure. Please read these instructions in their entirety before attempting installation.

CAUTION! WORK ONLY ON A LEVEL SURFACE. USE JACKS /JACK STANDS OF SUFFICIENT CAPACITY TO LIFT AND SUPPORT YOUR VEHICLE. NEVER WORK UNDER A VEHICLE SUPPORTED BY A FLOOR OR BUMPER JACK.

INCLUDED HARDWARE:

Qty.	P/N	Description
1	556R40	Band Clamp, 2.0" x 1.25" SS Torca
1	556R45	Band Clamp, 1-5/8" x 1.25" SS Torca
2	599R94	Decal – Blackheart 4" x 2"

REMOVING THE OE EXHAUST:

1. Disconnect the negative cable from the vehicle battery.
2. Lift the vehicle and secure on jack stands.
3. Remove the (x6) 10mm bolt heads and remove the center cross brace (**Figure 1**).

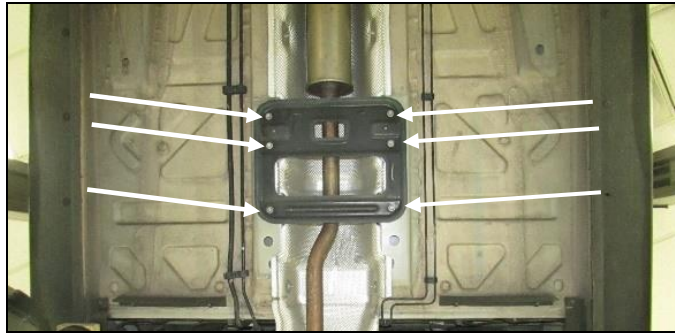


Figure 1

- Using a tape measure, measure back 10" from the OE resonator and make a mark. Take a piece of tape and wrap around the tube where you made a mark. This will help you make a good straight cut. Use a reciprocating saw to make your cut (Figures 1, 2, & 3).

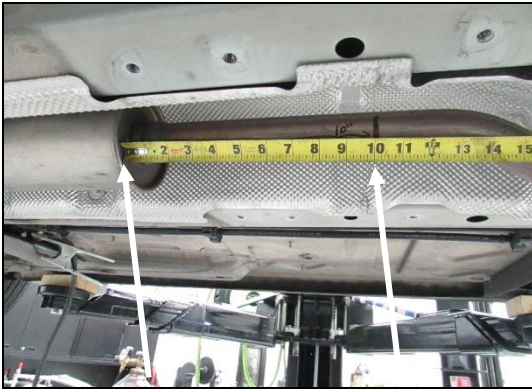


Figure 1



Figure 2



Figure 3

- Go to the OE muffler remove (x2) hangers and remove the OE cat back exhaust (Figure 4).



Figure 4

INSTALLATION:

1. Slide on the (x1) 1-5/8" band clamp. Install the Blackheart pipe (**Figure 5**).



Figure 5

2. Reinstall the center cross brace and tighten (x6) 10mm bolt heads.
3. Slide on the (x1) 2" band clamp. Install the Blackheart muffler. Install the hangers in the OE rubber isolators, line up the exhaust tip, and tighten all clamps (**Figure 6**).



Figure 6

4. Remove the jack stands and lower the vehicle.
5. After 150 miles, re-check and tighten all bolts and clamps.

NOTE: It is normal for the Blackheart Exhaust System to emit smoke for the first few minutes during break-in period.