



**2012-2016 BMW 328i F30, L4 2.0L (t)
3"Cat-Back Exhaust, 304SS
BH8314**

Installation Instructions



Thank you for making HOOKER HEADERS your choice in a high-performance exhaust system. Extensive dyno/track testing has enabled HOOKER to offer the most advanced design in exhaust systems. The installation, while not complex, will take a certain amount of time. However, the additional horsepower and improved performance will more than justify your efforts. Proper installation and maintenance will ensure long life and maximum performance from your HOOKER HEADER exhaust system.

BEFORE STARTING:

Your vehicle must be raised a minimum of 36 inches. A floor hoist is ideal. If no hoist is available, we strongly urge the use of axle stands as a safety measure. Please read these instructions in their entirety before attempting installation.

CAUTION! WORK ONLY ON A LEVEL SURFACE. USE JACKS /JACK STANDS OF SUFFICIENT CAPACITY TO LIFT AND SUPPORT YOUR VEHICLE. NEVER WORK UNDER A VEHICLE SUPPORTED BY A FLOOR OR BUMPER JACK.

INCLUDED HARDWARE:

Accessory Pack Contents:		
P/N	Qty.	Description
556R23	3	3" x 1.25" Band Clamp
556R22	1	2.5" x 1.25" Band Clamp
599R94	2	Decal – Blackheart 4" x 2"
199R11700	1	Instruction Sheet

REMOVING THE OE EXHAUST:

1. Disconnect the negative cable from the vehicle battery.
2. Lift the vehicle and secure on jack stands.
3. Loosen the (x1) 13mm head nut at the OE band clamp (**Figure 1**).

4. Remove the (x6), bolts at the cross brace and remove the brace (**Figure 2**).

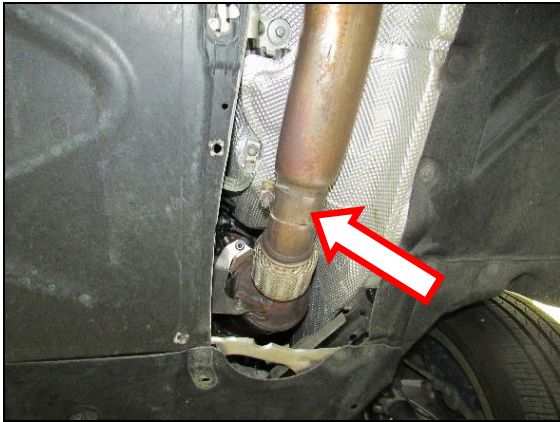


Figure 1

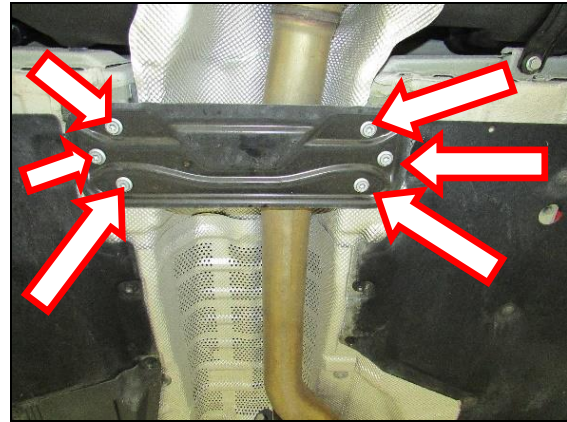


Figure 2

5. Remove the (x2) bolts at the hanger bracket (**Figure 3**).

6. Un-plug the exhaust valve, remove the (x2) 13mm head nuts on the right and left side muffler hanger bracket (**Figure 4**). Now remove the OE exhaust system.

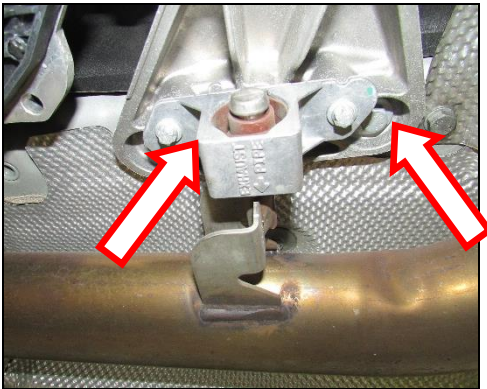


Figure 3



Figure 4

INSTALLATION:

1. Remove the (x2) hangers and exhaust valve off the OE muffler, and transfer to the Blackheart muffler (**Figure 5**).
2. Remove the (x1) hanger off the OE mid pipe and transfer to the Blackheart mid pipe (**Figure 6**).

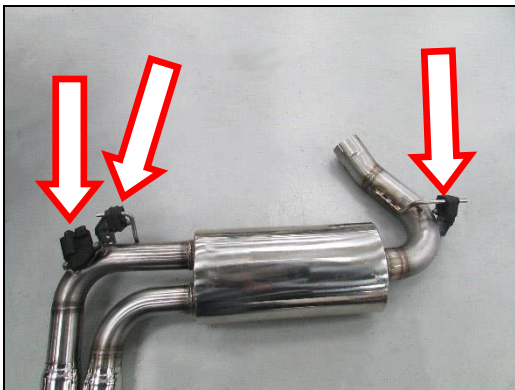


Figure 5



Figure 6

- Slide on the (x1) 2 1/2" band clamp and connect the Blackheart pipe to the OE down pipe or Hooker Blackheart P/N BH8308. Tighten (x2) bolts on the hanger bracket (**Figure 7**).
- Slide on the 3" band clamp and install the resonator pipe. Reinstall the cross brace and tighten (x6) bolts. Slide on the 3" band clamp and install the under axle tube (**Figure 8**).

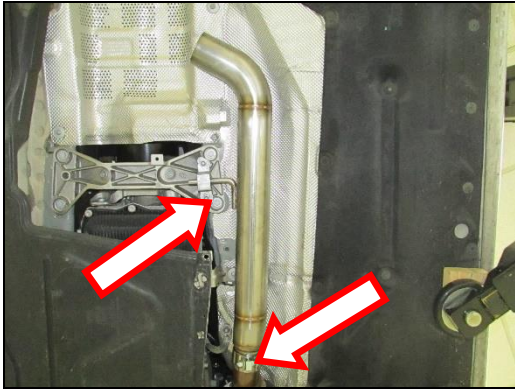


Figure 7

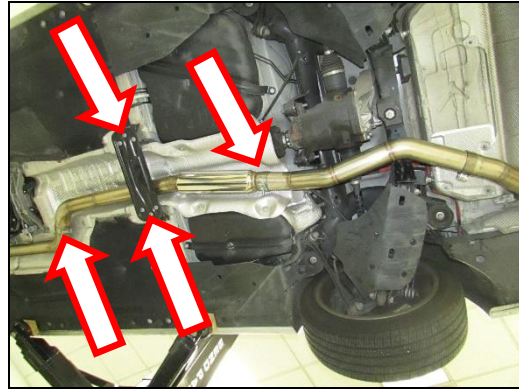


Figure 8

- Slide on the (x1) 3" band clamp and install the muffler. Tighten (x2) 13mm head nuts on the left and right side hanger bracket. Plug up the exhaust valve (**Figure 9**). Line up the exhaust tips and tighten all bolts and clamps.

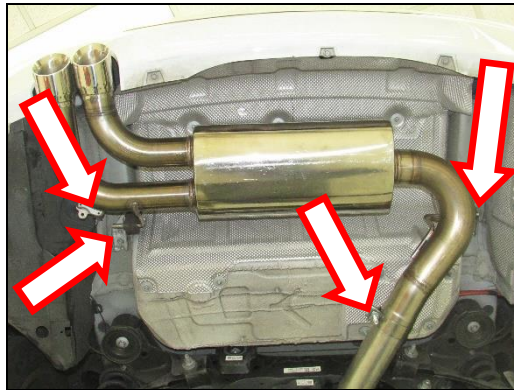


Figure 9

- Remove the jack stands and lower the vehicle.
- After 150 miles, re-check and tighten all bolts and clamps.

NOTE: It is normal for the Blackheart Exhaust System to emit smoke for the first few minutes during break-in period.