



**2012-2016 BMW 328i/428i F30/F32, L4 2.0L (t)
3" Axle-Back Exhaust, 304ss
BH8306**

Installation Instructions



NOTE: YOU WILL NEED TO CUT THE OEM EXHAUST.

Thank you for making HOOKER HEADERS your choice in a high-performance exhaust system. Extensive dyno/track testing has enabled HOOKER to offer the most advanced design in exhaust systems. The installation, while not complex, will take a certain amount of time. However, the additional horsepower and improved performance will more than justify your efforts. Proper installation and maintenance will ensure long life and maximum performance from your HOOKER HEADER exhaust system.

BEFORE STARTING:

Your vehicle must be raised a minimum of 36 inches. A floor hoist is ideal. If no hoist is available, we strongly urge the use of axle stands as a safety measure. Please read these instructions in their entirety before attempting installation.

CAUTION! WORK ONLY ON A LEVEL SURFACE. USE JACKS /JACK STANDS OF SUFFICIENT CAPACITY TO LIFT AND SUPPORT YOUR VEHICLE. NEVER WORK UNDER A VEHICLE SUPPORTED BY A FLOOR OR BUMPER JACK.

INCLUDED HARDWARE:

Accessory Pack Contents:		
P/N	Qty.	Description
556R23	2	3" x 1.25" Band Clamp
599R94	2	Decal – Blackheart 4" x 2"
199R11699	1	Instruction Sheet

REMOVING THE OE EXHAUST:

1. Disconnect the negative cable from the vehicle battery.
2. Lift the vehicle and secure on jack stands.

3. Locate the tube going in to the OE muffler. Measure back 4" where the straight piece starts and make a mark. Now take a piece of tape and wrap around the tube. This will help you cut straight when cutting the tube (**Figures 1, 2, & 3**).

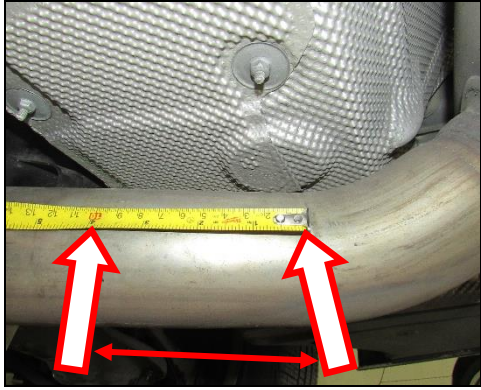


Figure 1



Figure 2



Figure 3

4. Unplug the connector at the exhaust valve (**Figure 4**).
5. Remove the (x2) 13mm head nuts on the right and left side muffler hanger bracket and remove the OE muffler (**Figure 5**).

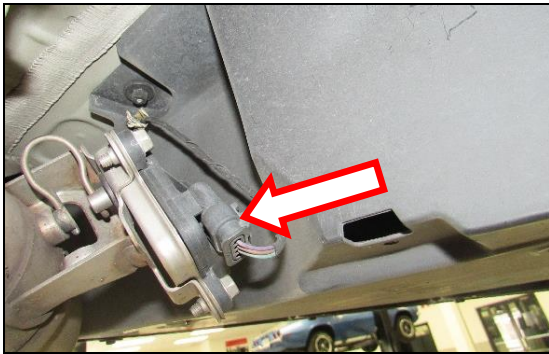


Figure 4

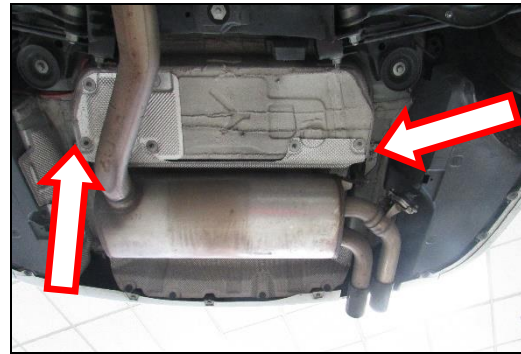


Figure 5

INSTALLATION:

1. Remove the OE hangers and exhaust valve off the OE muffler and transfer to the Hooker Blackheart muffler (**Figure 6**).
2. Slide (x1) 3" band clamp on the adapter pipe and tighten (**Figure 7**).

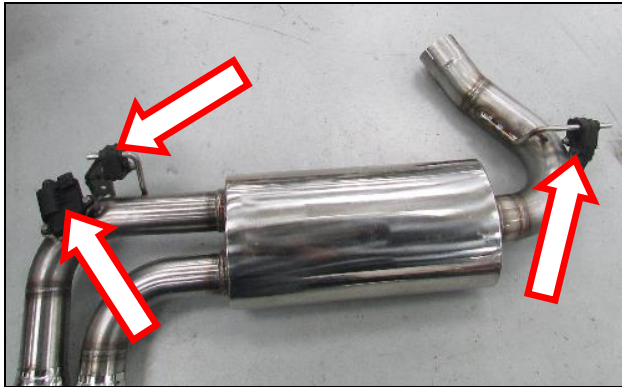


Figure 6

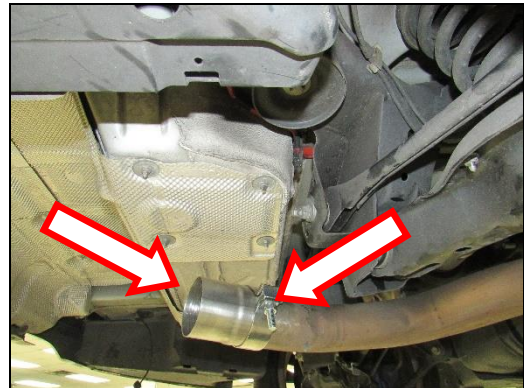


Figure 7

3. Slide the other 3" band clamp on to the Blackheart muffler (**Figure 8**).
4. Install the Blackheart muffler and tighten (x2) 13mm head nuts on the right and left side hanger bracket plug in the wire going to the exhaust valve. Line up the exhaust tips and tighten (x1) 3" band clamp (**Figure 9**).

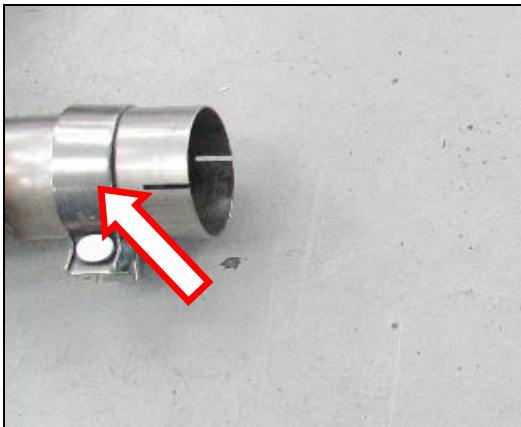


Figure 8

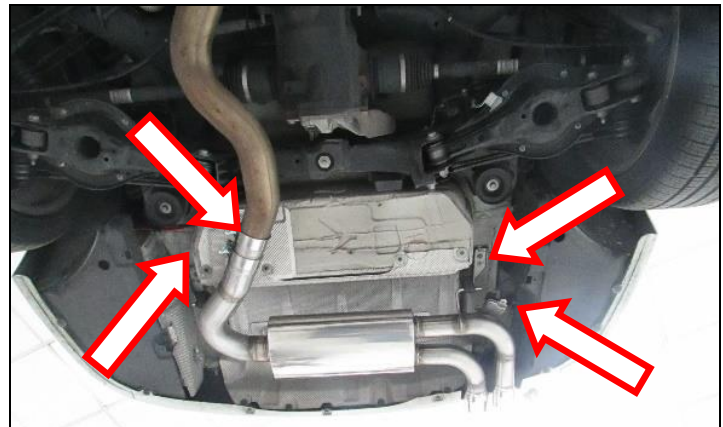


Figure 9

5. Remove the jack stands and lower the vehicle
6. After 150 miles, re-check and tighten all bolts and clamps.

NOTE: It is normal for the Blackheart Exhaust System to emit smoke for the first few minutes during break-in period.