



**2012-2015 Honda Civic (SI)
2.5" Axle Back Exhaust System,304SS
BH7308
Installation Instructions**



Thank you for making HOOKER HEADERS your choice in a high-performance exhaust system. Extensive dyno/track testing has enabled HOOKER to offer the most advanced design in exhaust systems. The installation, while not complex, will take a certain amount of time. However, the additional horsepower and improved performance will more than justify your efforts. Proper installation and maintenance will ensure long life and maximum performance from your HOOKER HEADER exhaust system.

BEFORE STARTING:

Your vehicle must be raised a minimum of 36 inches. A floor hoist is ideal. If no hoist is available, we strongly urge the use of axle stands as a safety measure. Please read these instructions in their entirety before attempting installation.

CAUTION! WORK ONLY ON A LEVEL SURFACE. USE JACKS /JACK STANDS OF SUFFICIENT CAPACITY TO LIFT AND SUPPORT YOUR VEHICLE. NEVER WORK UNDER A VEHICLE SUPPORTED BY A FLOOR OR BUMPER JACK.

INCLUDED HARDWARE:

Qty.	P/N	Description
2	599R94	Decal – Blackheart 4" x 2"

REMOVING THE OE EXHAUST:

1. Disconnect the negative cable from the vehicle battery.
2. Lift the vehicle and secure on jack stands.
3. Remove the (x2) 12mm bolt heads and (x2) springs at the muffler flange (**Figure 1**).



Figure 1

4. Spray the (x2) rubber isolator with wd-40 and remove off the car hangers (**Figures 2 & 3**).

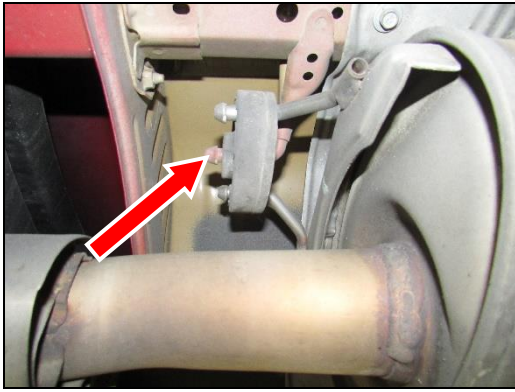


Figure 2



Figure 3

5. Remove the OE muffler out from under the car.

INSTALLATION:

1. Remove the (x2) rubber isolator off the OE muffler and slide on to the Blackheart muffler hangers (**Figures 4 & 5**).



Figure 4

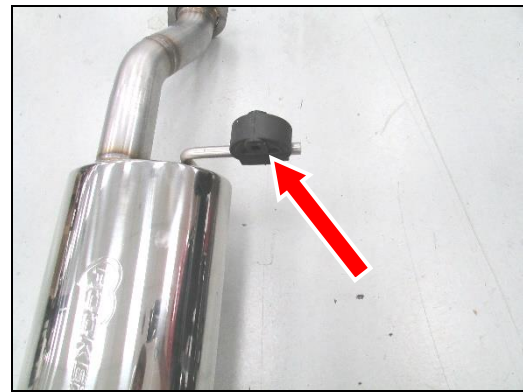


Figure 5

2. Slide in the Blackheart Axle-back and slide on the rubber isolators on the car hangers (**Figure 6**).



Figure 6

3. Inspect the OE donut gasket (replace if needed). Install the (x2) OE 12mm bolt heads and (x2) springs that connected the muffler flange to the resonator flange (**Figure 7**).



Figure 7

4. Line up exhaust tips and tighten all clamps and bolts.
5. Re-check your work.
6. Remove the jack stands and lower the vehicle.
7. After 150 miles, re-check and tighten all bolts and clamps.

NOTE: It is normal for the Blackheart Exhaust System to emit smoke for the first few minutes during break-in period.