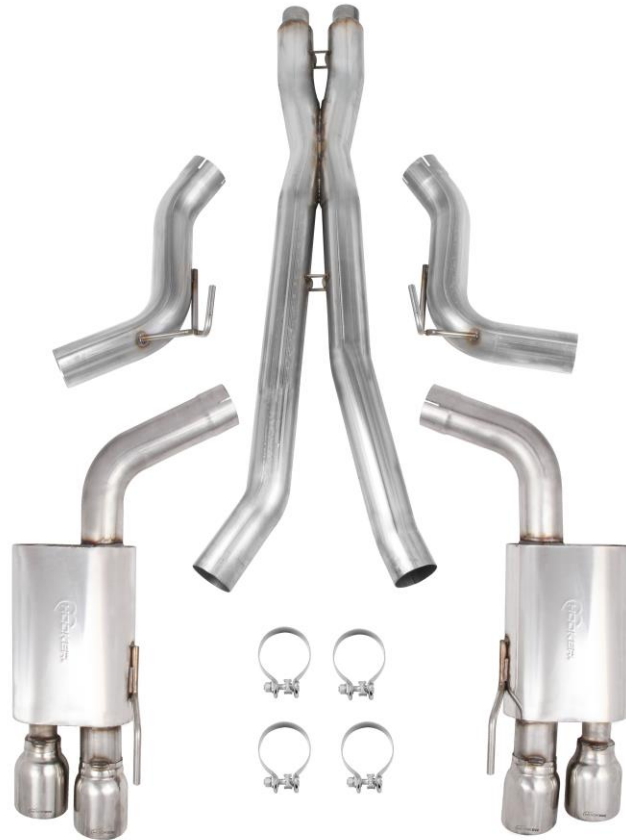




**2018 Ford Mustang GT V8, 5.0L
Blackheart Cat-Back Dual Exhaust System
BH3360
Installation Instructions**



Thank you for making HOOKER HEADERS your choice in a high-performance exhaust system. Extensive dyno/track testing has enabled HOOKER to offer the most advanced design in exhaust systems. The installation, while not complex, will take a certain amount of time. However, the additional horsepower and improved performance will more than justify your efforts. Proper installation and maintenance will ensure long life and maximum performance from your HOOKER HEADER exhaust system.

BEFORE STARTING:

Your vehicle must be raised a minimum of 36 inches. A floor hoist is ideal. If no hoist is available, we strongly urge the use of axle stands as a safety measure. Please read these instructions in their entirety before attempting installation.

CAUTION! WORK ONLY ON A LEVEL SURFACE. USE JACKS /JACK STANDS OF SUFFICIENT CAPACITY TO LIFT AND SUPPORT YOUR VEHICLE. NEVER WORK UNDER A VEHICLE SUPPORTED BY A FLOOR OR BUMPER JACK.

INCLUDED HARDWARE:

P/N	Qty.	Description
556R23	4	Band Clamp, 3.0" x 1.25" Wide, SS Torca
556R94	2	Decal – Blackheart 4" x 2"

INSTALLATION:

1. Disconnect the negative cable from the vehicle battery.
2. Lift the vehicle and secure on jack stands.
3. Loosen the (x2) band clamps securing the OE mufflers to the front catalytic converter pipes.
4. Remove (x2) 13mm head bolts securing the left and right side front OE muffler isolation mount bracket to the chassis.

NOTE: Set these parts aside as they will be re-used.

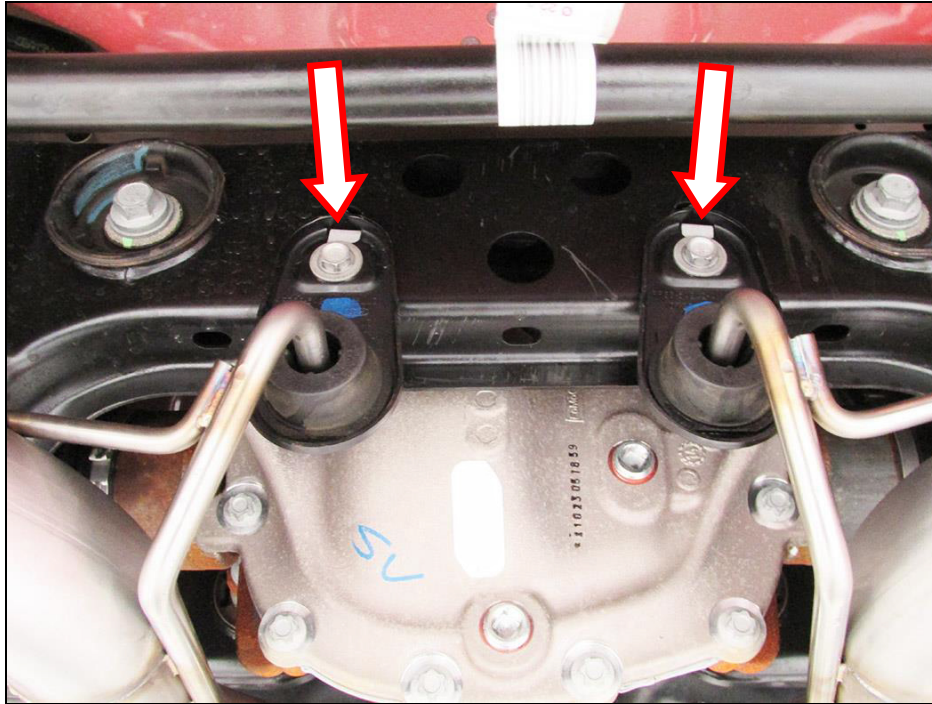


Figure 1

5. Remove (x4) 13mm head bolts securing the left and right side rear OE muffler isolation mount bracket to the chassis.

NOTE: Set these parts aside as they will be re-used.

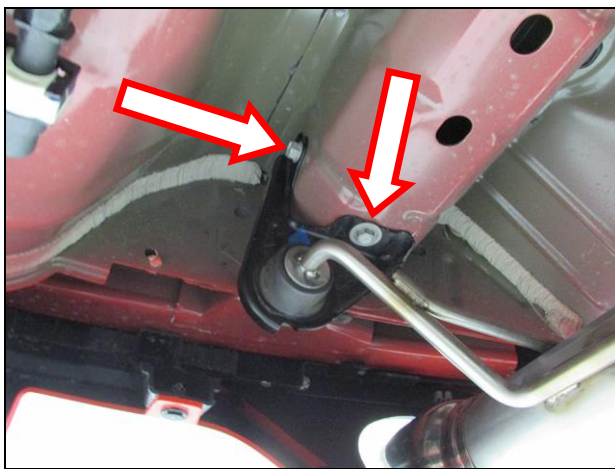


Figure 2

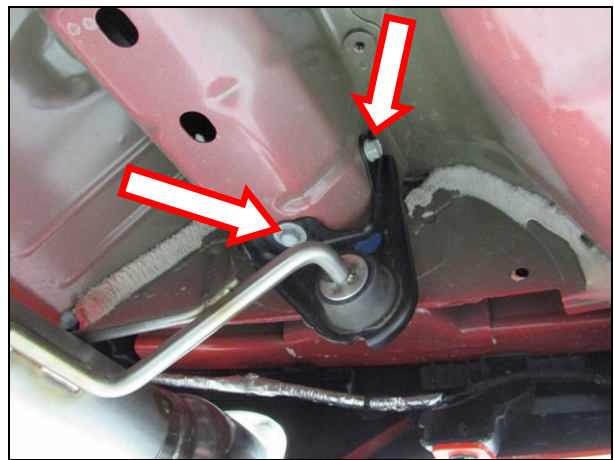


Figure 3

6. Remove the OE mufflers and mid pipe.

7. On a workbench, remove the (x4) isolation mount brackets off the OE muffler sections and transfer onto the Blackheart Cat-Back Exhaust System. We recommend transferring the isolation mount brackets one a time to ensure they go to the appropriate locations.
8. Using (x2) original band clamps loosened from step 3, install the Blackheart X-Pipe. Do not tighten the band clamps.

NOTE: The X-pipe needs to be installed with the shorter straight section of the outlet pipes on the passenger's side.

9. Using (x1) 3.0" supplied band clamp and (x1) original bolt removed from step 4, install the left side Blackheart mid pipe section and tighten the bolt. Do not tighten the band clamp.
10. Using (x1) 3.0" supplied band clamp and (x1) original bolt removed from step 4, install the right side Blackheart mid pipe section and tighten the bolt. Do not tighten the band clamp.
11. Using (x1) 3.0" supplied band clamp and the (x2) original bolts removed from step 5, install the left side Blackheart muffler section and tighten the (x2) 13mm head bolts. Do not tighten the band clamp.
12. Using (x1) 3.0" supplied band clamp and the (x2) original bolts removed from step 5, install the right side Blackheart muffler section and tighten the (x2) 13mm head bolts. Do not tighten the band clamp.
13. Align the Blackheart Exhaust System including the left and right side tips to your desired position and tighten all band clamps.
14. Re-check your work.
15. Connect the battery, start the engine and check for leaks.
16. Remove jack stands and lower vehicle.
17. After 150 miles, re-check and tighten all bolts and clamps.

NOTE: It is normal for the Blackheart Exhaust System to emit smoke for the first few minutes during break-in period.