



**2016-2018 Mazda Miata MX-5
1 1/2" Tri-Y RACE ONLY Shorty Header, 304SS
BH10303
Installation Instructions**



Thank you for making HOOKER HEADERS your choice in a high-performance exhaust system. Extensive dyno/track testing has enabled HOOKER to offer the most advanced design in exhaust systems. The installation, while not complex, will take a certain amount of time. However, the additional horsepower and improved performance will more than justify your efforts. Proper installation and maintenance will ensure long life and maximum performance from your HOOKER HEADER exhaust system.

BEFORE STARTING:

Your vehicle must be raised a minimum of 36 inches. A floor hoist is ideal. If no hoist is available, we strongly urge the use of axle stands as a safety measure. Please read these instructions in their entirety before attempting installation.

CAUTION! WORK ONLY ON A LEVEL SURFACE. USE JACKS /JACK STANDS OF SUFFICIENT CAPACITY TO LIFT AND SUPPORT YOUR VEHICLE. NEVER WORK UNDER A VEHICLE SUPPORTED BY A FLOOR OR BUMPER JACK.

INCLUDED HARDWARE:

Qty.	Description
2	M10 x 1.5 x 25 Bolt
2	M10 x 1.50 Serrated Hex Nut
2	Blackheart Decal – 4" x 2"

REMOVING THE OE EXHAUST:

1. Disconnect the negative cable from the vehicle battery.
2. Lift the vehicle and secure on jack stands.
3. From under the car, remove (x9) 12mm bolt heads to remove the front splash guard under the motor (**Figure 1**).
4. Remove the (x2) 14mm head nuts at the OEM exhaust manifold flange (**Figure 2**).

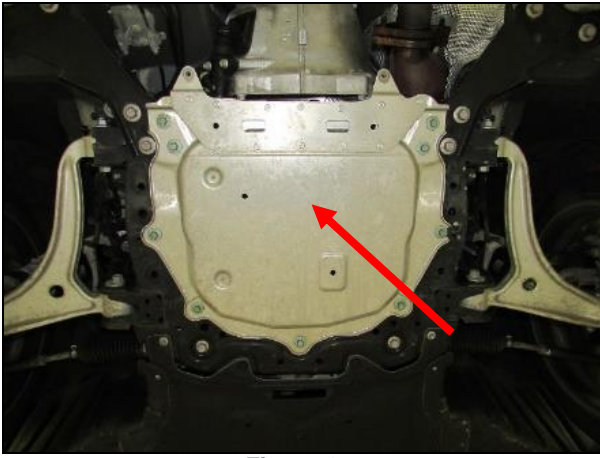


Figure 1

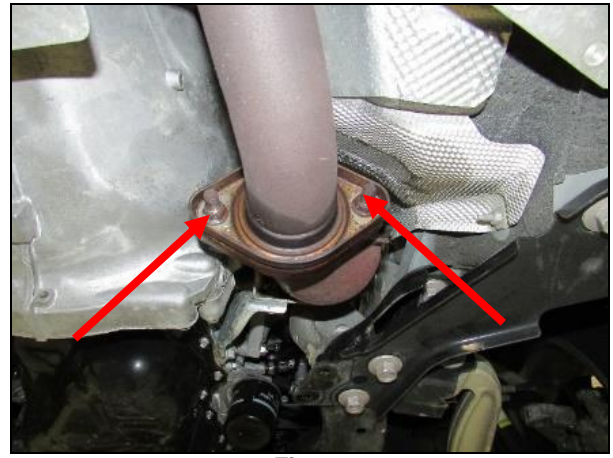


Figure 2

5. Take off the (x4) 14mm bolt heads and remove the manifold bracket (**Figure 3**).
6. Disconnect the primary O2 sensor.
7. Go to the top of the engine bay. Remove (x3) 10mm bolt heads and remove the OEM manifold heat shield (**Figure 4**).

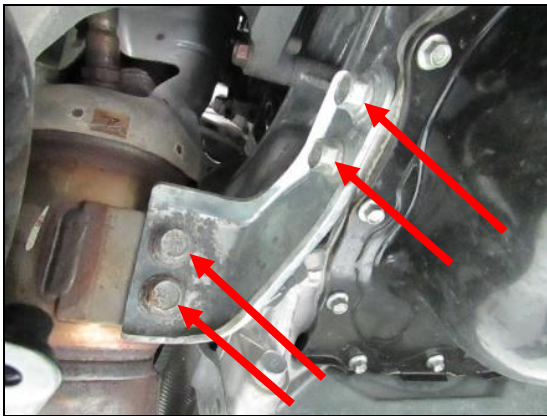


Figure 3



Figure 4

8. Disconnect the heater hose clamp that's on the bracket and remove the (x1) 10mm bolt head. Pull the heater hoses out of your way. This will give you better access when pulling the OEM manifold out (**Figure 5**).
9. Remove the (x5) 14mm manifold head nuts.
10. On the RH side, remove (x3) 14mm bolt heads that is on the bottom of the motor mount. You can access these under the car (**Figure 6**).

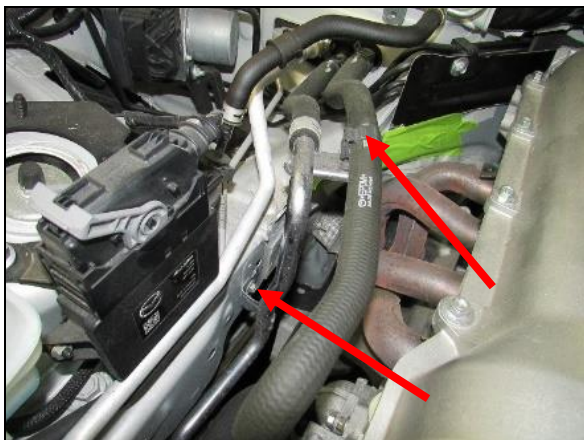


Figure 5

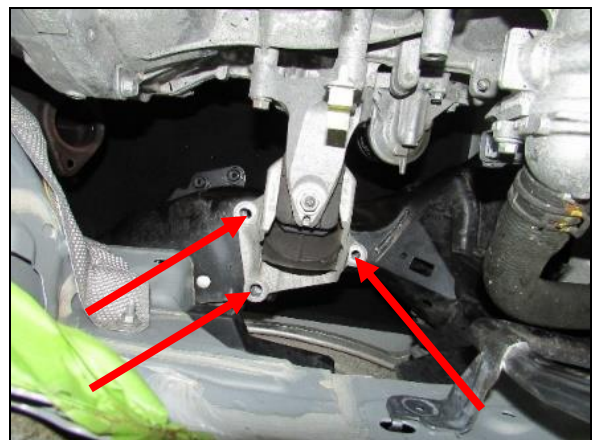


Figure 6

11. Use a screw jack under the car and place it on the RH side motor mount bracket. Raise the motor up on the RH side, take off the (x1) 14mm head nut on top of the motor mount, and remove the OEM motor mount. This will give you more room to pull the OEM manifold out (**Figures 7 & 8**).
12. Pull the OEM manifold out of the top of the engine bay.



Figure 7



Figure 8

INSTALLATION:

1. You will reuse the OEM manifold gasket, OEM seal ring, and OEM O2 sensor. Check and replace if needed. Transfer the OEM seal ring & OEM O2 sensor to the Hooker BlackHeart header (**Figures 9 & 10**).

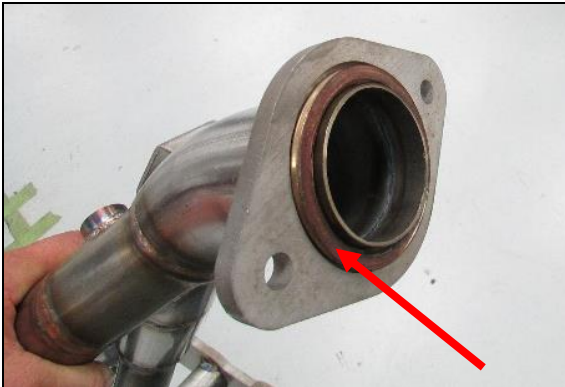


Figure 9

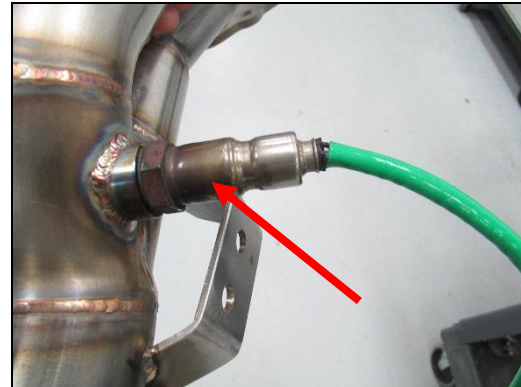


Figure 10

2. With the motor raised up with the screw jack and motor mount out, make sure the OEM manifold gasket is in place. Slide in the Hooker BlackHeart header from the top of the engine bay. Reuse the (x5) OEM head nuts and and tighten (**Figures 11 & 12**).

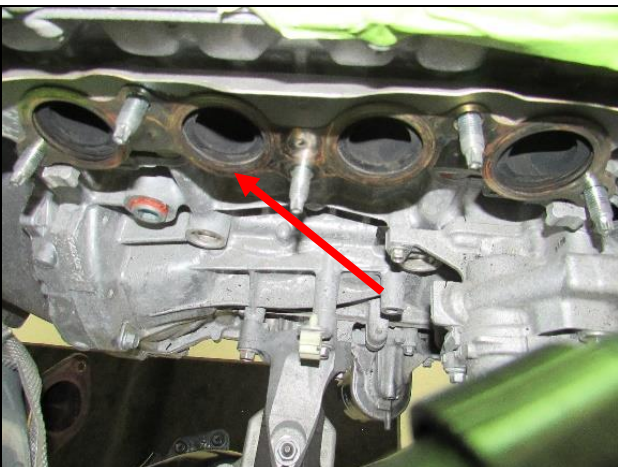


Figure 11



Figure 12

- Slide in the OEM motor mount and tighten (x3) 14mm head bolts and (x1) 14mm head nut. Remove the screw jack out from under the car (**Figure 13**).
- Reinstall the OEM manifold bracket and tighten (x4) 14mm bolt heads (**Figure 14**).

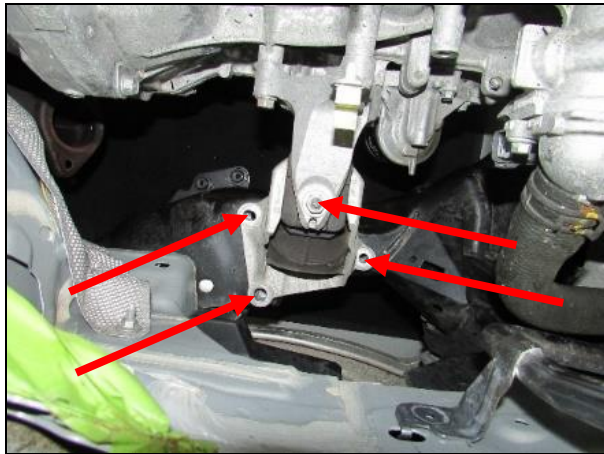


Figure 13

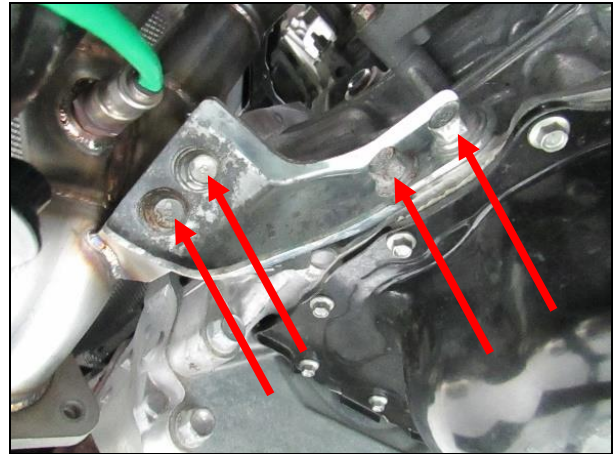


Figure 14

- Reconnect the primary O2 sensor.
- Connect the header flange to the resonator flange. Tighten the (x2) 17mm head bolts and (x2) 15mm head nuts that were supplied with the kit (**Figure 15**).
- Reinstall the front splash guard back under the car and tighten (x9) 12mm bolt heads.
- From the top of the engine bay, slide the heater hose back on the bracket and connect the clamp. Reinstall the (x1) 10mm bolt head to the heater hose bracket (**Figure 16**).

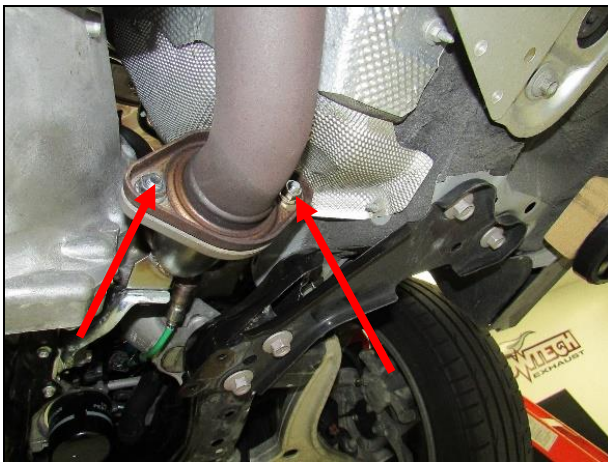


Figure 15

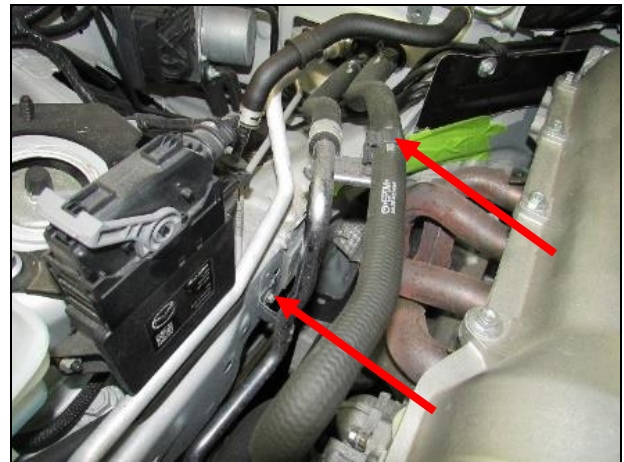


Figure 16

- Reconnect the negative cable back to the battery.
- Re-check your work.
- Remove the jack stands and lower the vehicle.
- After 150 miles, re-check and tighten all bolts and clamps.

NOTE: It is normal for the Blackheart Exhaust System to emit smoke for the first few minutes during break-in period.