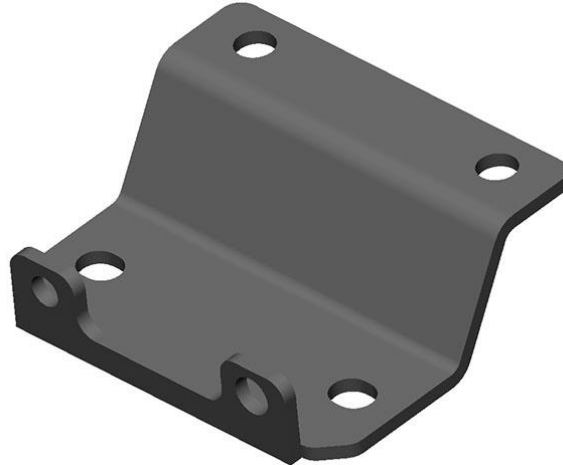




**4L80/4L85 Transmission Crossmember Adapter Bracket
71223013HKR
Installation Instructions**



Thank you for choosing to use this Hooker Blackheart product as part of your LS swap project. The components contained in this package are designed and intended for installation only with the specific Hooker Blackheart engine swap transmission crossmembers, as referenced on Holley's website, and within various Hooker Blackheart transmission crossmember instruction sheets.

1. Check that the hardware package includes the following:

Qty.	Description
1	Adapter Bracket
2	7/16" Bolts
2	7/16" Nuts
2	M10 Bolts

INSTALLATION:

1. Remove the existing transmission isolator mount from the rear of the transmission, if present.
2. Remove the two bottom bolts attaching the extension housing to the transmission case.
3. Attach the adapter bracket to the transmission extension housing as shown in the image below. This can be accomplished by using the removed factory bolts at their original location and the supplied M10 bolts in the two upper holes lined up with the threaded holes in the machined isolator mounting pad.



4. Attach the transmission mount of your choice to the bottom of the adapter bracket using the supplied 7/16" bolts and nuts.