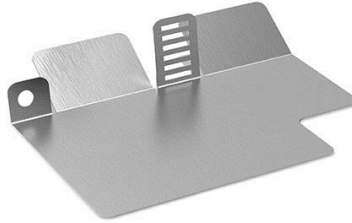




## GM LS Engine Starter Heat Shield 71223007HKR Installation Instructions



### COMPATIBILITY INFORMATION:

This heat shield is compatible with all Hooker LS swap headers and has been confirmed to fit GM 4<sup>th</sup>-gen F-body and Vortec truck engine starters; use on other LS starters may require bending or modifying the heat shield to achieve acceptable fitment.

### INSTALLATION:

Check the hardware package.

Hardware Kit:					
Qty.	Description	Qty.	Description	Qty.	Description
1	Heat Shield	1	Hose Clamp	2	M10 Flat Washers

1. Disconnect the negative battery cable.
2. Remove the outer starter bolt.
3. Place one supplied M10 flat washer on either side of the hole in the heat shield and insert the removed starter bolt through the hole/washers.
4. Re-install the bolt with attached heat shield/washers into the hole in the starter and run the bolt all the way in but do not tighten it. See **Figure 1**.
5. Use a screw/nut driver and open the supplied hose clamp. Once done, wrap the hose clamp around the starter body and through the most appropriate slot to use in the long tab of the heat shield. Reconnect the ends of the clamp. See **Figure 2**.
6. Tighten the clamp and starter bolt. Reconnect the negative battery cable.



Figure 1

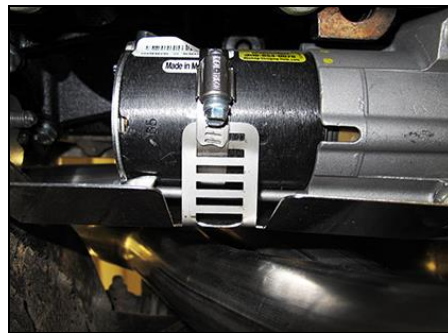


Figure 2

### LIMITATION OF LIABILITY – DISCLAIMER:

The regulation of emissions production, noise levels, and safety standards is undertaken by the federal government, each of the fifty state legislatures, and by many local municipalities, towns, and counties.

HOOKER™ makes no warranties of merchantability, of fitness for particular purpose, or that its products are approved for general use, or that its products comply with laws, regulations, or ordinances in the state where they may be sold to the ultimate purchaser, the consumer.

Unless expressly stated to the contrary in the catalog, instruction sheet; or price list, the entire risk as to the conformity of any company product in any such state and as to repair should the product prove to be defective or non-conforming, is on the retail purchaser, the buyer, the ultimate consumer, of such product and it is not upon the seller, distributor, or manufacturer.

In this connection, the retail purchaser, the buyer, the ultimate consumer assumes the burden of the entire cost of any and all necessary service, alterations, or repair.