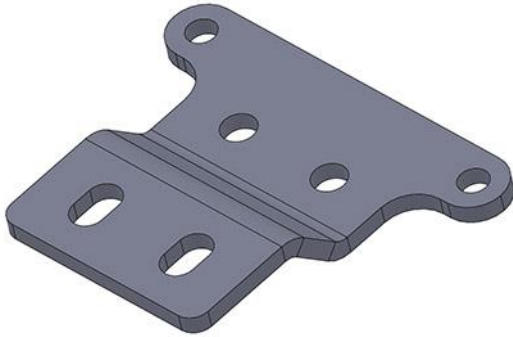
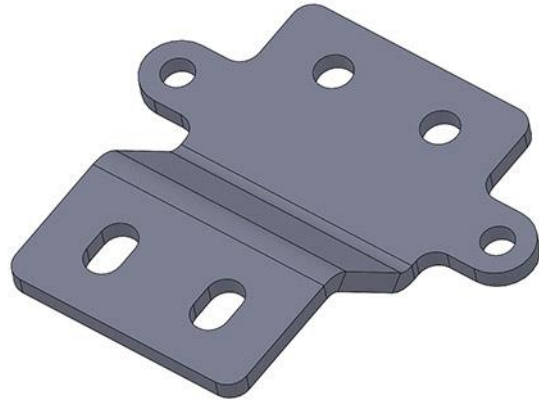




**Hooker 4L60-4L70 & 4L80-4L85 [Transmission Crossmember Adapter Bracket Kits](#)  
71223003HKR & 71223004HKR  
Installation Instructions**



**4L60-4L70**



**4L80-4L85**

Thank you for choosing to use a Hooker™ transmission crossmember as part of your LS swap project. The components contained in this package are designed and intended for installation only with specific Hooker LS swap transmission crossmembers. Please refer to the instructions included with the compatible Hooker crossmember you are using for proper installation of these parts.

1. Check that the hardware package includes the following:

Qty.	Description	Qty.	Description
1	Bracket Assembly	2	7/16 x 1 Bolts
2	3/8 x 1" Bolts	2	7/16 Nuts
2	3/8 Nuts		

No other use of these components is intended, implied or recommended by Holley Performance Products.

**LIMITATION OF LIABILITY – DISCLAIMER:**

The regulation of emissions production, noise levels, and safety standards is undertaken by the federal government, each of the fifty state legislatures, and by many local municipalities, towns, and counties.

HOOKER™ makes no warranties of merchantability, of fitness for particular purpose, or that its products are approved for general use, or that its products comply with laws, regulations, or ordinances in the state where they may be sold to the ultimate purchaser, the consumer.

Unless expressly stated to the contrary in the catalog, instruction sheet; or price list, the entire risk as to the conformity of any company product in any such state and as to repair should the product prove to be defective or non-conforming, is on the retail purchaser, the buyer, the ultimate consumer, of such product and it is not upon the seller, distributor, or manufacturer.

In this connection, the retail purchaser, the buyer, the ultimate consumer assumes the burden of the entire cost of any and all necessary service, alterations, or repair.